

MATERIAL
 CONTACTS: COPPER ALLOY
 INSULATOR: LCP THERMOPLASTIC 94V-0
 WELD TAB: COPPER ALLOY

FINISH
 CONTACTS: 5μ" MIN. GOLD ON MATING END;
 MATTE TIN ON SOLDER
 ALL UNDERPLATED NICKEL
 WELD TAB: MATTE TIIN

ELECTRICAL
 CONTACT CURRENT RATING: 2 AMPERE
 VOLTAGE RATING: 275VAC
 MAX CYCLES: 25

ENVIRONMEENT
 OPERATION TEMPERATURE: -55°C TO 125°C
 SMT TEMPERATURE: 260°C

THIS PRINT IS
PRELIMINARY
 UNQUALIFIED PRODUCT
 CONTACT PRODUCT ENGINEERING
 BEFORE USING THIS PRINT



TITLE: COM-HPC 400pin Male Connector w/ Weld Tab

DWG#: R-CM-HPC400-8AW1-NB

SHEET: 1/3
 REV. REF

UNIT: mm
 SCALE: A4 5:4

FINISH: CHECKED:

THIRD ANGLE PROJECTION

MATERIAL: RoHS Compliant

APPROVED:

TOLERANCE: Angle: ± 1°
 X: ± 0.25 .X: ± 0.20 .XX: ± 0.15

DRAWN: Ting

DATE: 07/22/2025

A B C D E F G H

1 PIN A100 PIN B100 PIN C100 PIN D100 PIN A1 PIN B1 PIN C1 PIN D1

2 CONNECTOR OUTLINE OTHER COMPONENTS ON PCB SHALL AVOID THIS ZONE

3 68.62 65.23



4 6.80 2.40 8.75

5 62.865 67.12 "A" "B" RECOMMENDED PCB LAYOUT TOLERANCE: ±0.05

6 ∅0.975 (NPTH) 1.00 ∅0.95 (PTH) ∅0.356 0.50 1.30 ∅0.975 (NPTH)

7 DETAIL A SCALE 2:1 DETAIL B SCALE 2:1

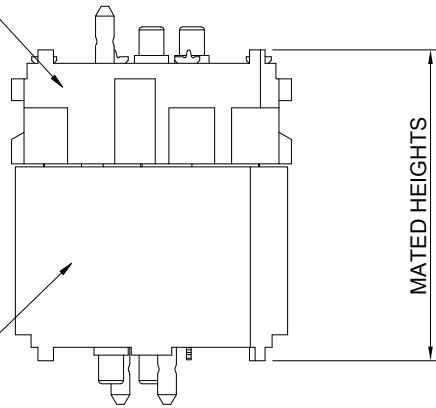
8 THIS PRINT IS PRELIMINARY UNQUALIFIED PRODUCT CONTACT PRODUCT ENGINEERING BEFORE USING THIS PRINT

 <p>ALL BEST ELECTRONICS CO., LTD.</p>	TITLE: COM-HPC 400pin Male Connector w/ Weld Tab			
	DWG#: R-CM-HPC400-8AW1-NB		SHEET: 2/3	REV. REF
	UNIT: mm	SCALE: A4 2:1	FINISH:	CHECKED:
	 THIRD ANGLE PROJECTION		MATERIAL: RoHS Compliant	APPROVED:
TOLERANCE: Angle: ± 1° X: ± 0.15 .X: ± 0.10 .XX: ± 0.05			DRAWN: Ting	DATE: 07/22/2025

A B C D E F G H

FEMALE: R-CF-HPC400-8AW1-NB

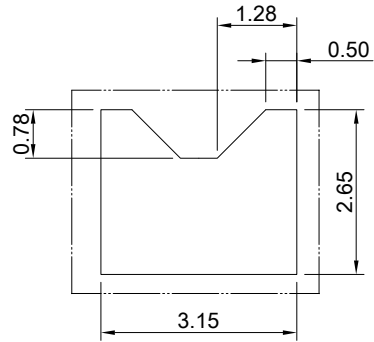
MALE: SEE TYPE



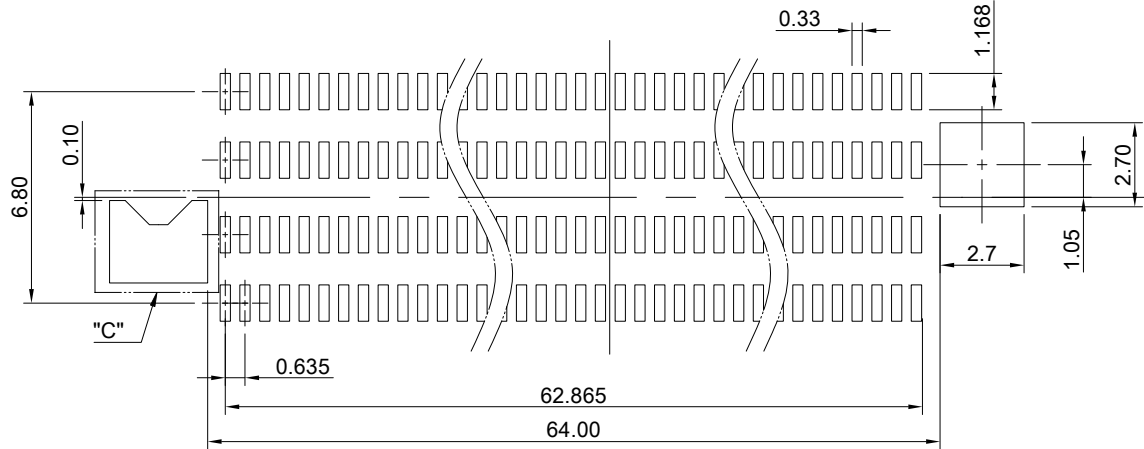
TYPE	MATED HEIGHTS
R-CM-HPC400-8AW1-NB	5mm
R-CM-HPC400-8AW2-NB	10mm

NOTE: Processing conditions will affect mated height.

PROCESSING VIEW
 DIMENSION INDICATES CONNECTOR/FIXTURE HEIGHT ON PCB
 TO GUARANTEE ENOUGH REFLOW OVEN WORKING SPACE.
 DIMENSION, PCB THICKNESS, AND THE HEIGHT OF THE COMPONENTS
 ON THE OTHER SIDE OF THE BOARD NEED TO BE CONSIDERED.



DETAIL C
SCALE 2:1



RECOMMENDED STENCIL LAYOUT
 ALL DIMENSIONS SYMMETRIC ABOUT CENTERLINE
 STENCIL TO BE 0.125mm THICK

THIS PRINT IS
PRELIMINARY
 UNQUALIFIED PRODUCT
 CONTACT PRODUCT ENGINEERING
 BEFORE USING THIS PRINT



TITLE: COM-HPC 400pin Male Connector w/ Weld Tab

DWG#: R-CM-HPC400-8AW1-NB

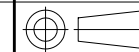
UNIT: mm

SCALE: A4 4:1

FINISH:

SHEET: 3/3
REV. REF

CHECKED:



THIRD ANGLE
PROJECTION

MATERIAL:
RoHS Compliant

APPROVED:

TOLERANCE: Angle: ± 1°
X: ± 0.15 .X: ± 0.10 .XX: ± 0.05

DRAWN: Ting

DATE: 07/22/2025