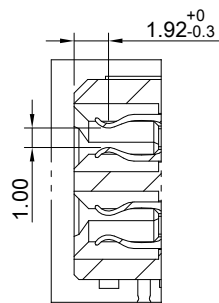
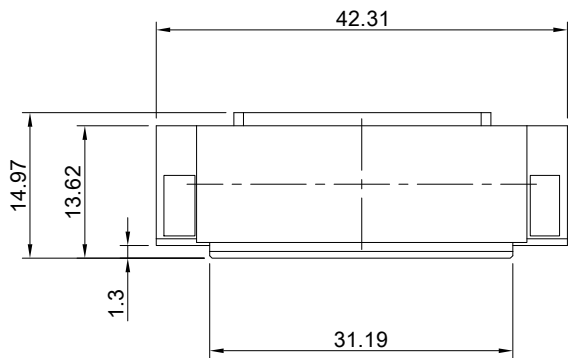
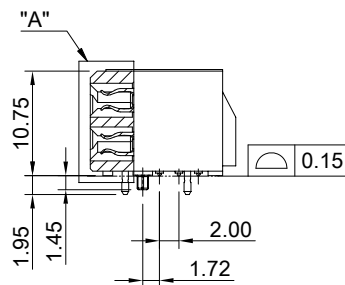
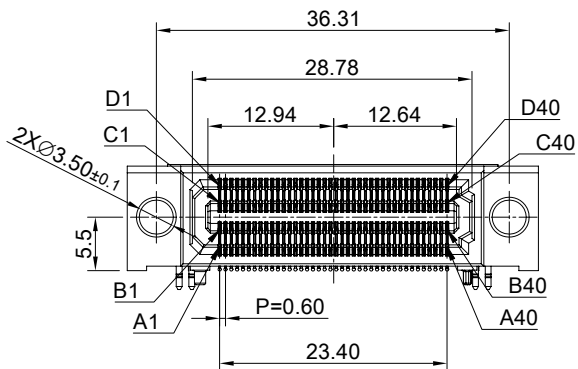
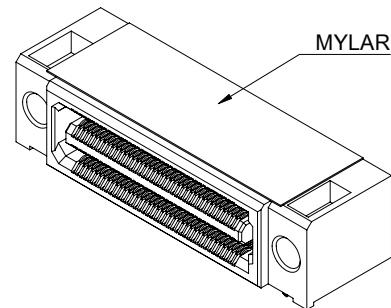


THIS PRINT IS
PRELIMINARY
 UNQUALIFIED PRODUCT
 CONTACT PRODUCT ENGINEERING
 BEFORE USING THIS PRINT



DETAIL A
 SCALE 2:1

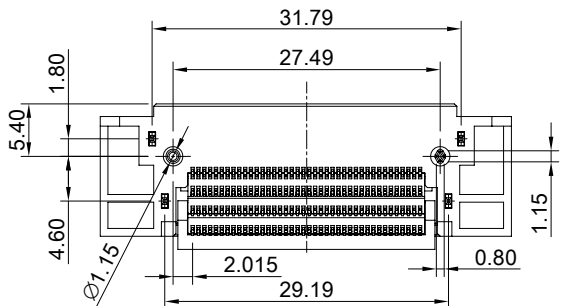


MATERIAL
 CONTACTS: COPPER ALLOY
 INSULATOR: LCP THERMOPLASTIC 94V-0

FINISH
 CONTACTS: GOLD FLASH ON MATING END;
 100µ" MIN. MATTE TIN ON SOLDER FOOT AREA
 ALL UNDERPLATED NICKEL

ELECTRICAL CHARACTERISTICS
 CONTACT CURRENT RATING: 2 AMPERE
 VOLTAGE RATING: 275VAC
 MAX CYCLES: 100

ENVIRONMENT
 OPERATION TEMPERATURE: -55°C TO 125°C
 SMT TEMPERATURE: 260°C



TITLE: 0.60mm 160Pin Quad Row Right Angle Socket Strip

DWG#: R-AF-06160-9AX1

UNIT: mm SCALE: A4 5:4

THIRD ANGLE PROJECTION

TOLERANCE: Angle: ± 1°
 X: ± 0.25 .X: ± 0.20 .XX: ± 0.15

FINISH: CHECKED:

MATERIAL: RoHS Compliant

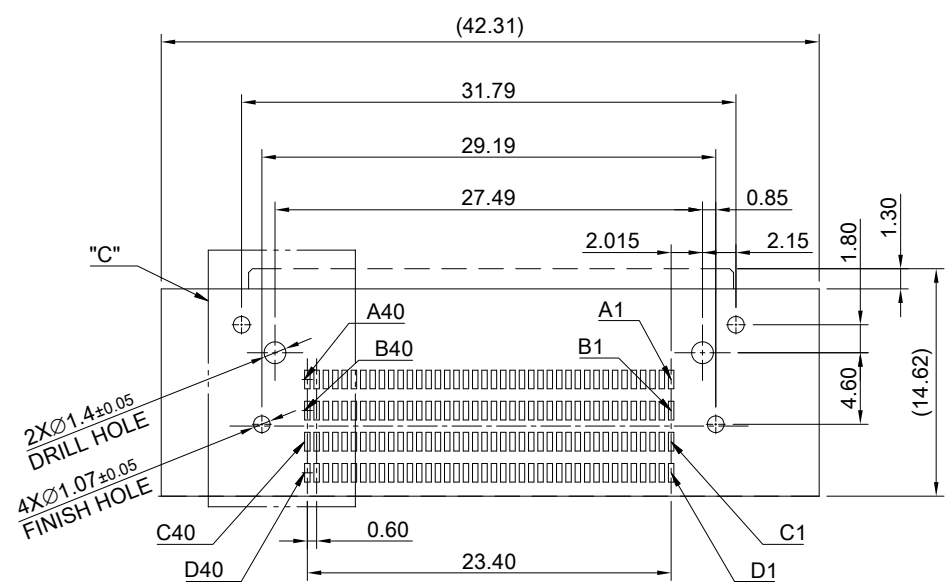
DRAWN: Judy

SHEET: 1/2 REV. REF

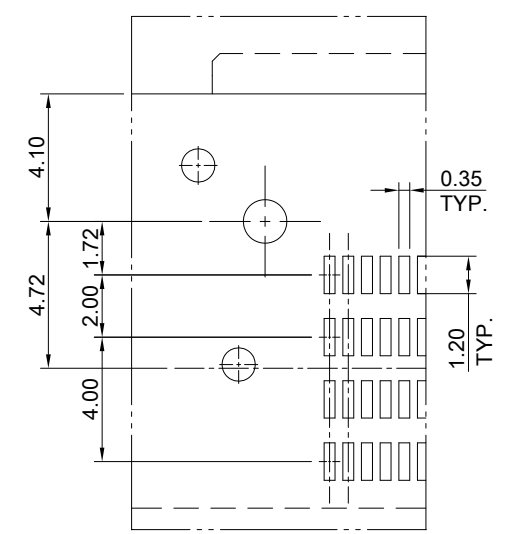
APPROVED:

DATE: 04/02/2024

THIS PRINT IS
PRELIMINARY
 UNQUALIFIED PRODUCT
 CONTACT PRODUCT ENGINEERING
 BEFORE USING THIS PRINT




TOLERANCE: ±0.05



DETAIL B
 SCALE 2:1

- NOTE
1. ALL DIMENSIONS ARE SYMMETRIC ABOUT THE CENTERLINE.
 2. CONNECTOR OUTLINE. OTHER COMPONENTS PLACED ON PCB, SHALL AVOID THIS AREA.
 3. TO BE SOLDERED USING PASTE IN HOLE TECHNOLOGY.FLOW SOLDER.
 4. NOT RECOMMENDED FOR INVERTED REFLOW SOLDER.

 ALL BEST ELECTRONICS CO., LTD.	TITLE: 0.60mm 160Pin Quad Row Right Angle Socket Strip		
	DWG#: R-AF-06160-9AX1		SHEET: 2/2
	UNIT: mm	SCALE: A4 2:1	FINISH:
	TOLERANCE: X± 0.15 .X± 0.10 .XX± 0.05		MATERIAL: RoHS Compliant
THIRD ANGLE PROJECTION		DRAWN: Judy	REV. REF
APPROVED:		DATE: 04/02/2024	