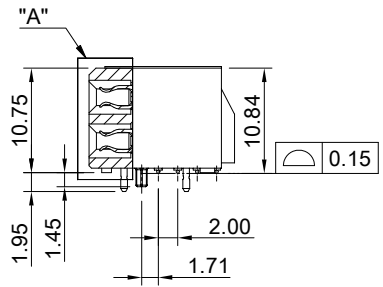
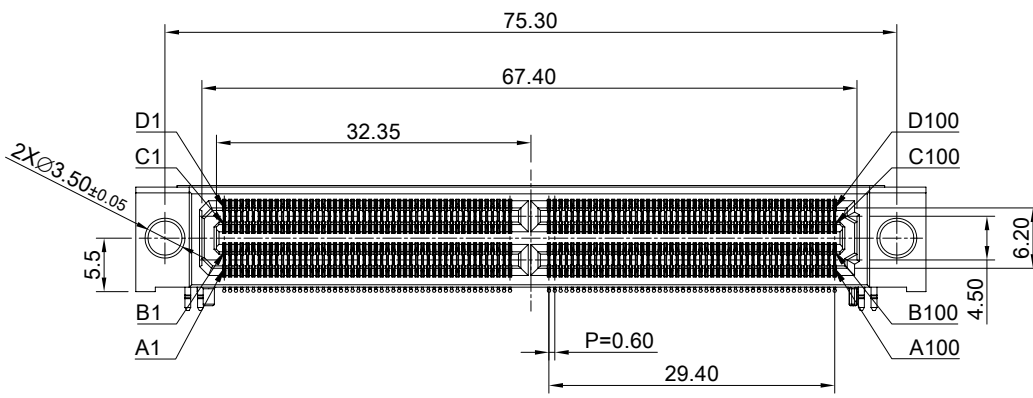
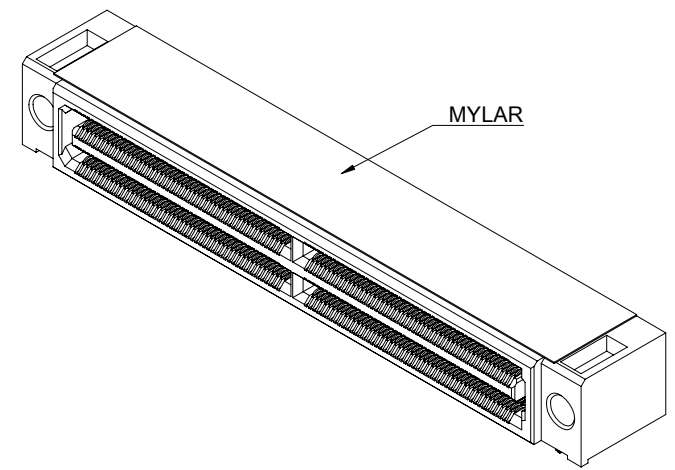


DETAIL A
SCALE 2:1

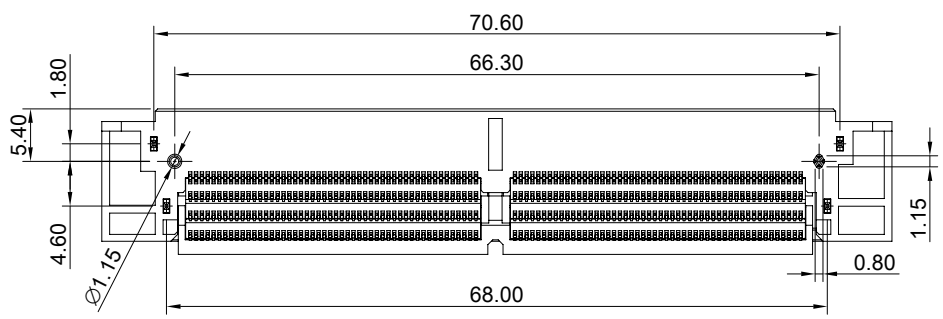


MATERIAL
CONTACTS: COPPER ALLOY
INSULATOR: LCP THERMOPLASTIC 94V-0

FINISH
CONTACTS: GOLD FLASH ON MATING END;
100µ" MIN. MATTE TIN ON SOLDER FOOT AREA
ALL UNDERPLATED NICKEL

ELECTRICAL CHARACTERISTICS
CONTACT CURRENT RATING: 2 AMPERE
VOLTAGE RATING: 275VAC
MAX CYCLES: 100

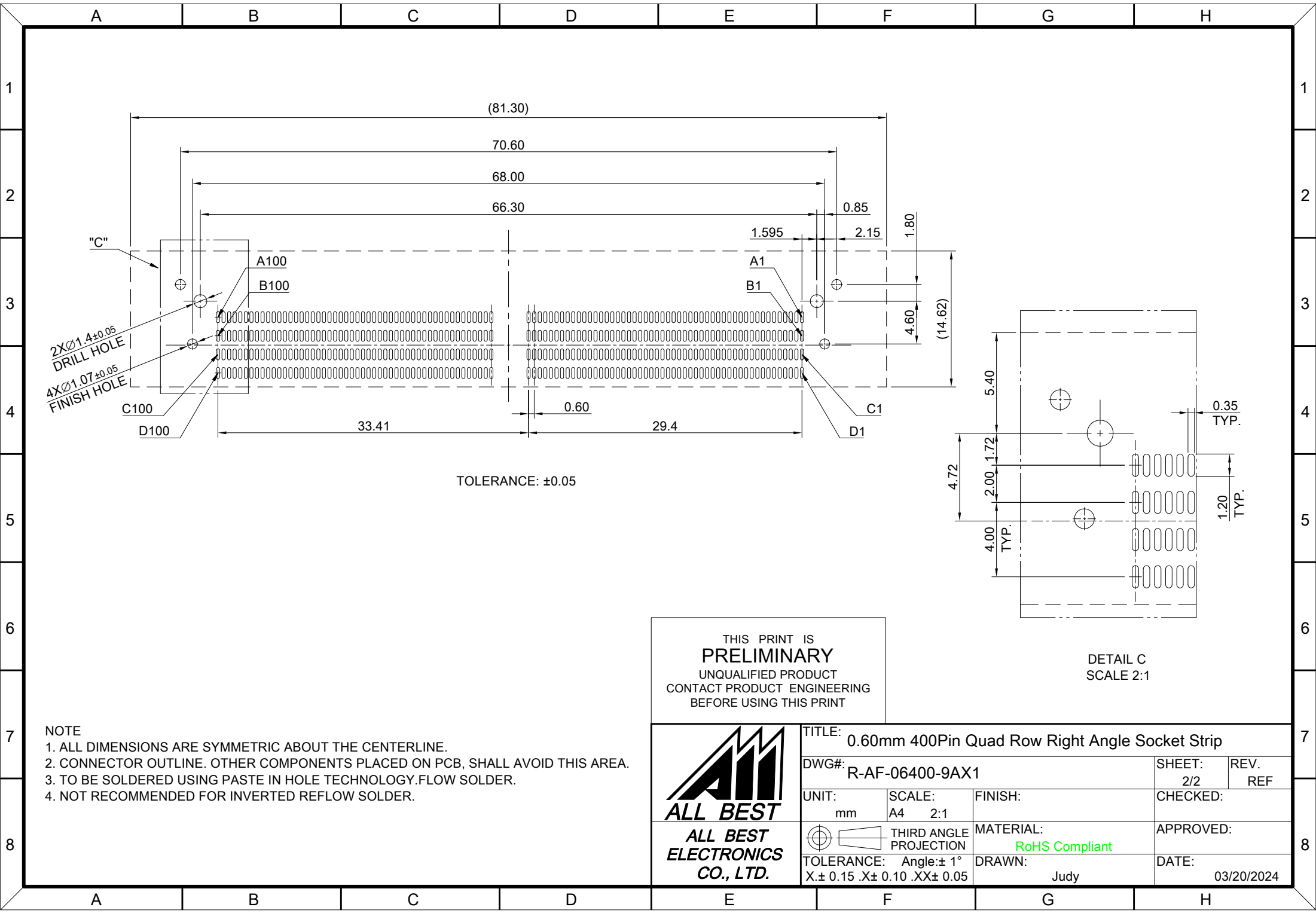
ENVIRONMENT
OPERATION TEMPERATURE: -55°C TO 125°C
SMT TEMPERATURE: 260°C



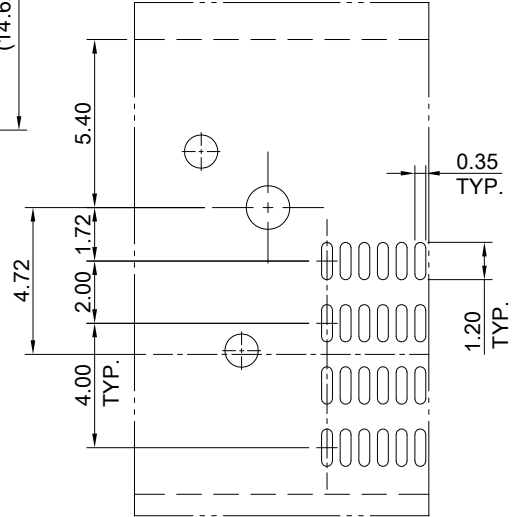
THIS PRINT IS
PRELIMINARY
UNQUALIFIED PRODUCT
CONTACT PRODUCT ENGINEERING
BEFORE USING THIS PRINT



TITLE: 0.60mm 400Pin Quad Row Right Angle Socket Strip			
DWG#: R-AF-06400-9AX1		SHEET: 1/2	REV. REF
UNIT: mm	SCALE: A4 5:4	FINISH:	CHECKED:
THIRD ANGLE PROJECTION		MATERIAL: RoHS Compliant	APPROVED:
TOLERANCE: Angle: ± 1° X: ± 0.25 .X: ± 0.20 .XX: ± 0.15		DRAWN: Judy	DATE: 03/20/2024



TOLERANCE: ±0.05



DETAIL C
SCALE 2:1

THIS PRINT IS
PRELIMINARY
UNQUALIFIED PRODUCT
CONTACT PRODUCT ENGINEERING
BEFORE USING THIS PRINT

- NOTE
1. ALL DIMENSIONS ARE SYMMETRIC ABOUT THE CENTERLINE.
 2. CONNECTOR OUTLINE. OTHER COMPONENTS PLACED ON PCB, SHALL AVOID THIS AREA.
 3. TO BE SOLDERED USING PASTE IN HOLE TECHNOLOGY.FLOW SOLDER.
 4. NOT RECOMMENDED FOR INVERTED REFLOW SOLDER.

<p>ALL BEST ALL BEST ELECTRONICS CO., LTD.</p>	TITLE: 0.60mm 400Pin Quad Row Right Angle Socket Strip		
	DWG#: R-AF-06400-9AX1		SHEET: 2/2
	UNIT: mm	SCALE: A4 2:1	FINISH:
	TOLERANCE: X± 0.15 .X± 0.10 .XX± 0.05		MATERIAL: RoHS Compliant
THIRD ANGLE PROJECTION		DRAWN: Judy	REV. REF
APPROVED:		DATE: 03/20/2024	