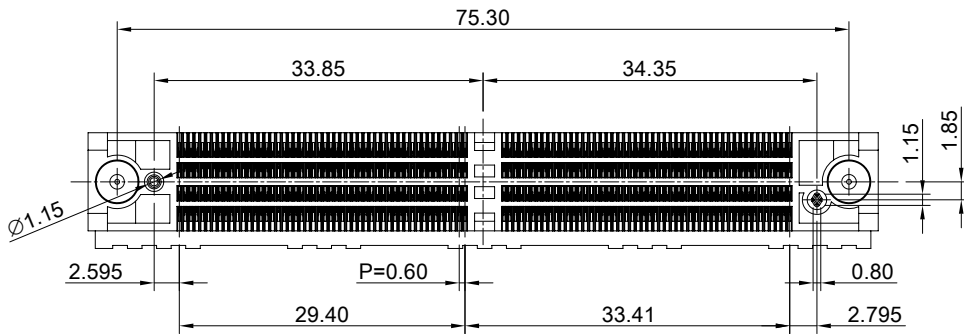


MATERIAL
CONTACTS: COPPER ALLOY
INSULATOR: LCP THERMOPLASTIC 94V-0

FINISH
CONTACTS: GOLD FLASH ON MATING END;
100µ" MIN. MATTE TIN ON SOLDER FOOT AREA
ALL UNDERPLATED NICKEL

ELECTRICAL CHARACTERISTICS
CONTACT CURRENT RATING: 2 AMPERE
VOLTAGE RATING: 275VAC
MAX CYCLES: 100

ENVIRONMENT
OPERATION TEMPERATURE: -55°C TO 125°C
SMT TEMPERATURE: 260°C



DETAIL A
SCALE 4:1

THIS PRINT IS
PRELIMINARY
UNQUALIFIED PRODUCT
CONTACT PRODUCT ENGINEERING
BEFORE USING THIS PRINT



TITLE: 0.60mm 400Pin Quad Row Socket Strip

DWG#: R-AM-06400-8AXX

UNIT: mm SCALE: A4 5:4

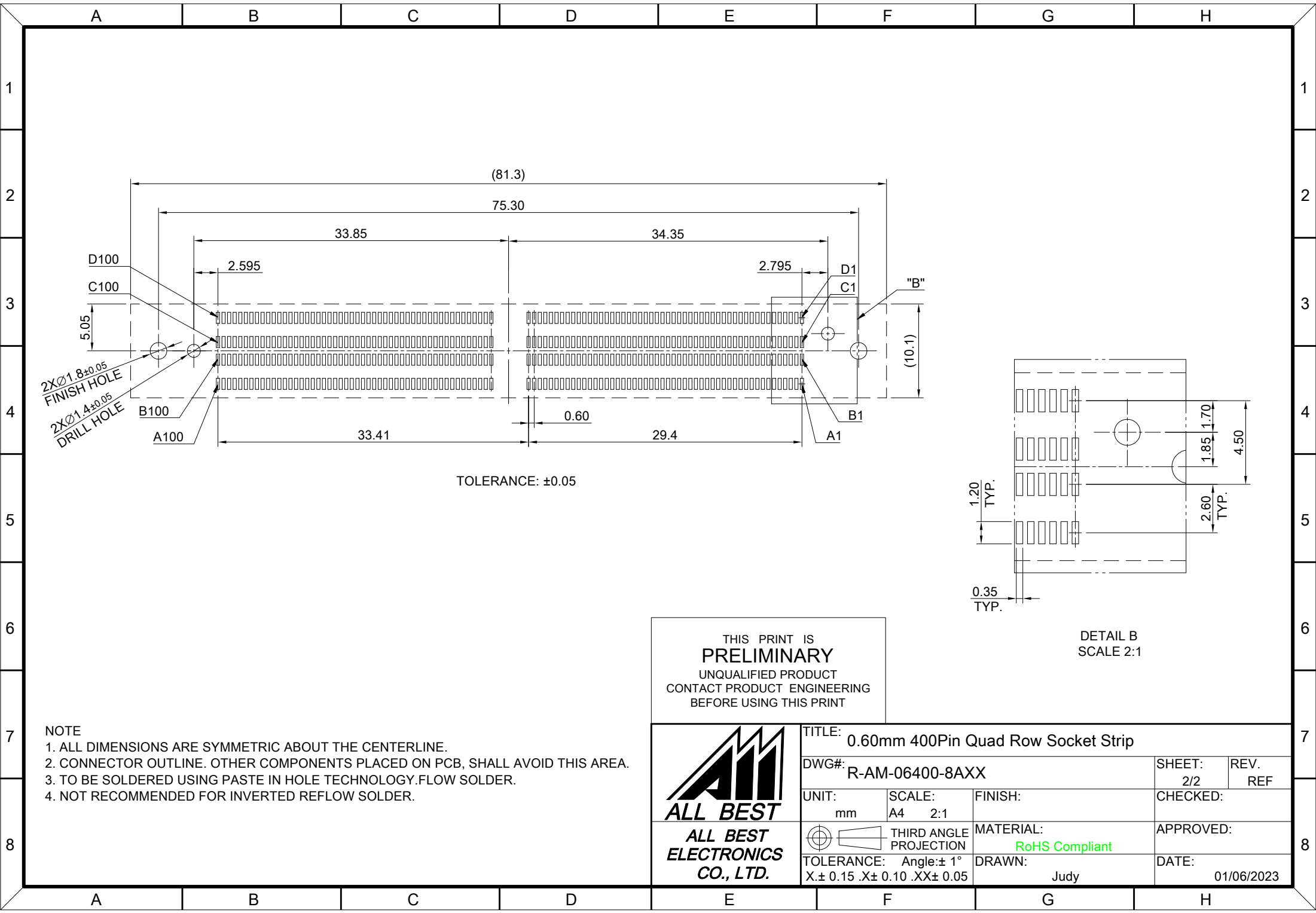
FINISH: CHECKED: SHEET: 1/2 REV. REF

THIRD ANGLE PROJECTION

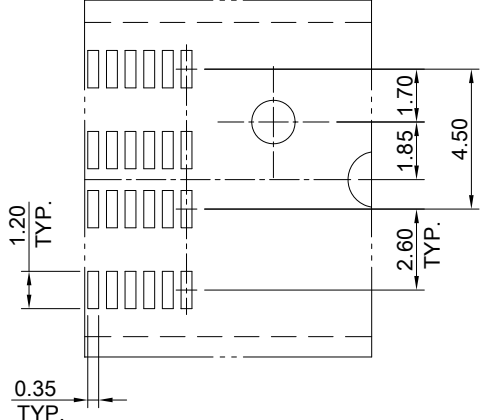
MATERIAL: APPROVED:

TOLERANCE: Angle: ± 1°
X: ± 0.25 .X: ± 0.20 .XX: ± 0.15

DRAWN: DATE: 01/06/2023
Judy



TOLERANCE: ±0.05



DETAIL B
SCALE 2:1

THIS PRINT IS
PRELIMINARY
UNQUALIFIED PRODUCT
CONTACT PRODUCT ENGINEERING
BEFORE USING THIS PRINT

- NOTE
1. ALL DIMENSIONS ARE SYMMETRIC ABOUT THE CENTERLINE.
 2. CONNECTOR OUTLINE. OTHER COMPONENTS PLACED ON PCB, SHALL AVOID THIS AREA.
 3. TO BE SOLDERED USING PASTE IN HOLE TECHNOLOGY.FLOW SOLDER.
 4. NOT RECOMMENDED FOR INVERTED REFLOW SOLDER.



| | | | |
|--|---------------|--------------------------|------------------|
| TITLE: 0.60mm 400Pin Quad Row Socket Strip | | | |
| DWG#: R-AM-06400-8AXX | | SHEET: 2/2 | REV. REF |
| UNIT: mm | SCALE: A4 2:1 | CHECKED: | |
| THIRD ANGLE PROJECTION | | APPROVED: | |
| TOLERANCE: Angle:± 1° X.± 0.15 .X± 0.10 .XX± 0.05 | | MATERIAL: RoHS Compliant | DATE: 01/06/2023 |
| | | DRAWN: Judy | |