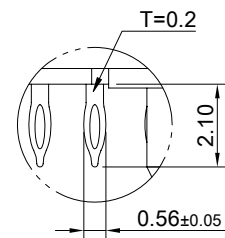
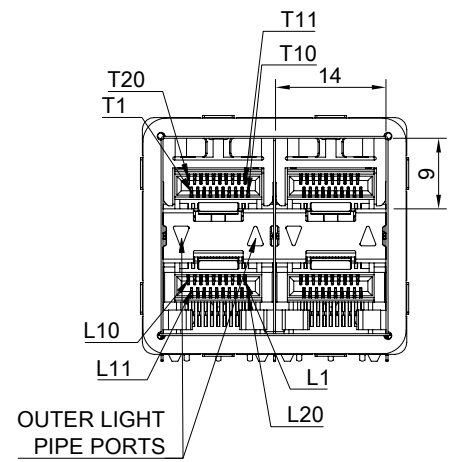
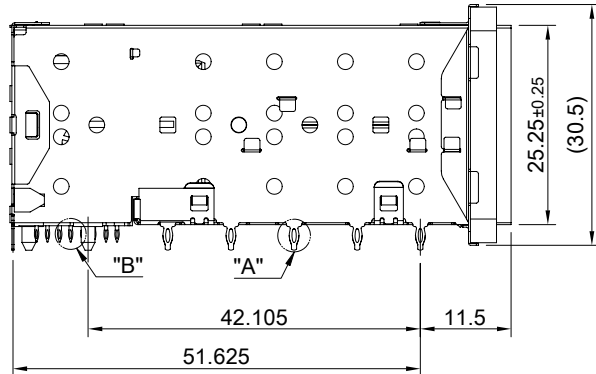
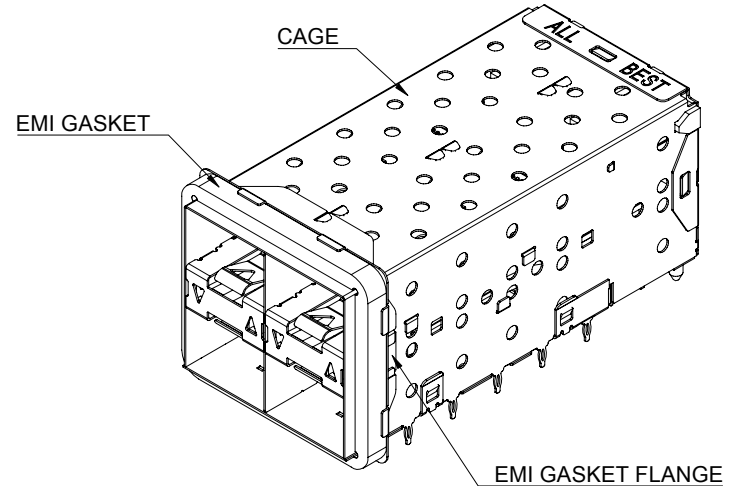


DETAIL A  
SCALE 5:1



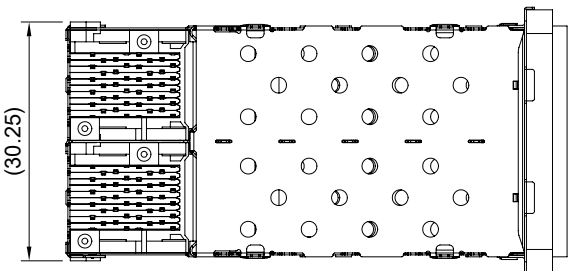
DETAIL B  
SCALE 5:1



**MATERIAL**  
 CAGE: NICKEL SILVER  
 CONNECTOR: LCP 94V-0  
                   COPPER ALLOY  
 EMI GASKET FLANGE: NICKEL SILVER  
 EMI GASKET: CONDUCTIVE ELASTOMER, (BLACK)  
 LIGHT PIPE: PC

**FINISH**  
 CONTACT: 15µ" MIN. GOLD ON MATING END;  
               30µ" MIN. MATTE TIN ON TERMINATION END;  
               ALL UNDERPLATED 50µ" MIN. NICKEL

**ELECTRICAL CHARACTERISTICS**  
 CONTACT CURRENT RATING: 0.5 AMPERE  
 VOLTAGE RATING: 30 VAC  
 CONTACT RESISTANCE: 80 mΩ MAX  
 DIELECTRIC WITHSTANDING VOLTAGE: 300 VAC



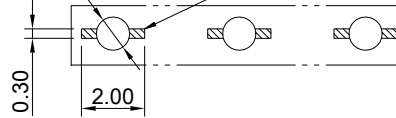
THIS PRINT IS  
**PRELIMINARY**  
 UNQUALIFIED PRODUCT  
 CONTACT PRODUCT ENGINEERING  
 BEFORE USING THIS PRINT



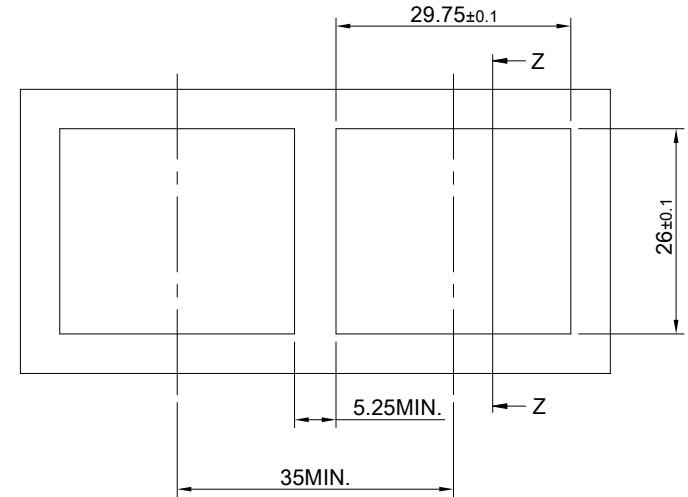
TITLE: Stacked SFP+ 2x2 ASS'Y w/ Internal Thermal Solution & Light Pipe			
DWG#: R-OP-008080-7-F-N2-33		SHEET: 1/3	REV. REF
UNIT: mm	SCALE: A4 1:1	FINISH:	
TOLERANCE: Angle: ± 1° X: ±0.25 .X: ±0.20 .XX: ±0.15		MATERIAL: RoHS Compliant	APPROVED:
THIRD ANGLE PROJECTION		DRAWN: Laura	DATE: 03/15/2024

21xØ1.05±0.05  
For Press-Fit Pin

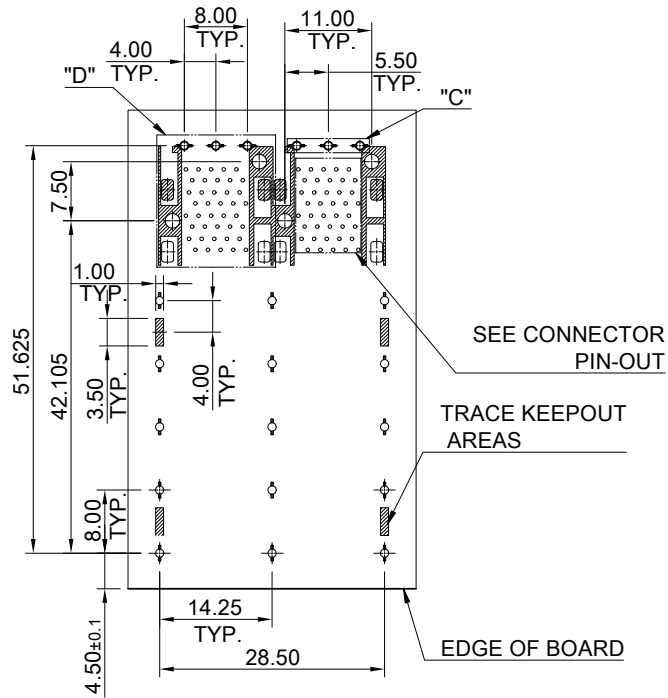
CROSS HATCHED AREA DENOTES EMI  
GROUNDING PAD (MUST BE CONNECTED)  
TO CHASSIS GROUND



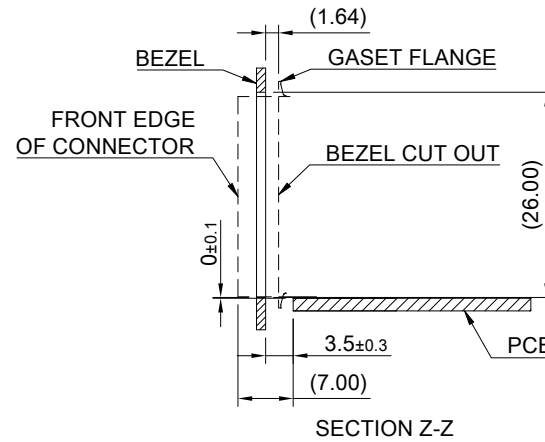
DETAIL C  
SCALE 4:1



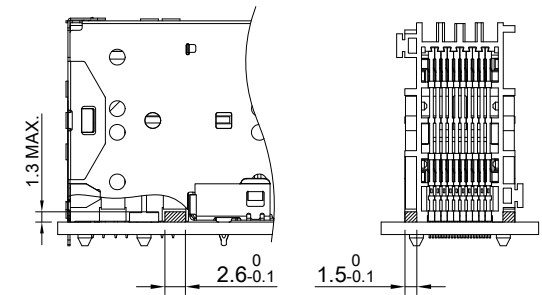
RECOMMENDED BEZEL CUT-OUT SPACING DETAIL  
BEZEL THICKNESS 0.8~2.6MM



RECOMMENDED PCB LAYOUT  
TOLERANCE: ± 0.05  
MINIMUM PCB THICKNESS OF 1.57MM



SECTION Z-Z



LED CLEARANCE REQUIREMENTS

THIS PRINT IS  
**PRELIMINARY**  
UNQUALIFIED PRODUCT  
CONTACT PRODUCT ENGINEERING  
BEFORE USING THIS PRINT



TITLE: Stacked SFP+ 2x2 ASS'Y w/ Internal Thermal Solution  
& Light Pipe

DWG#: R-OP-008080-7-F-N2-33

SHEET: 2/3  
REV. REF

UNIT: mm  
SCALE: A4 1:1

FINISH:

CHECKED:

THIRD ANGLE  
PROJECTION

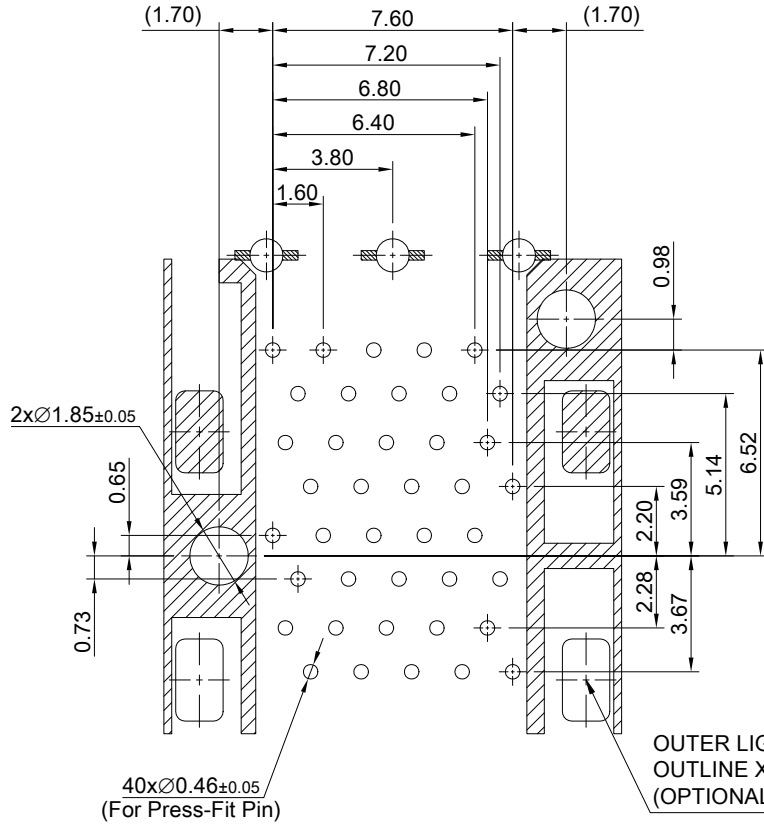
MATERIAL:  
RoHS Compliant

APPROVED:

TOLERANCE: Angle: ± 1°  
X.±0.15 .X±0.10 .XX±0.05

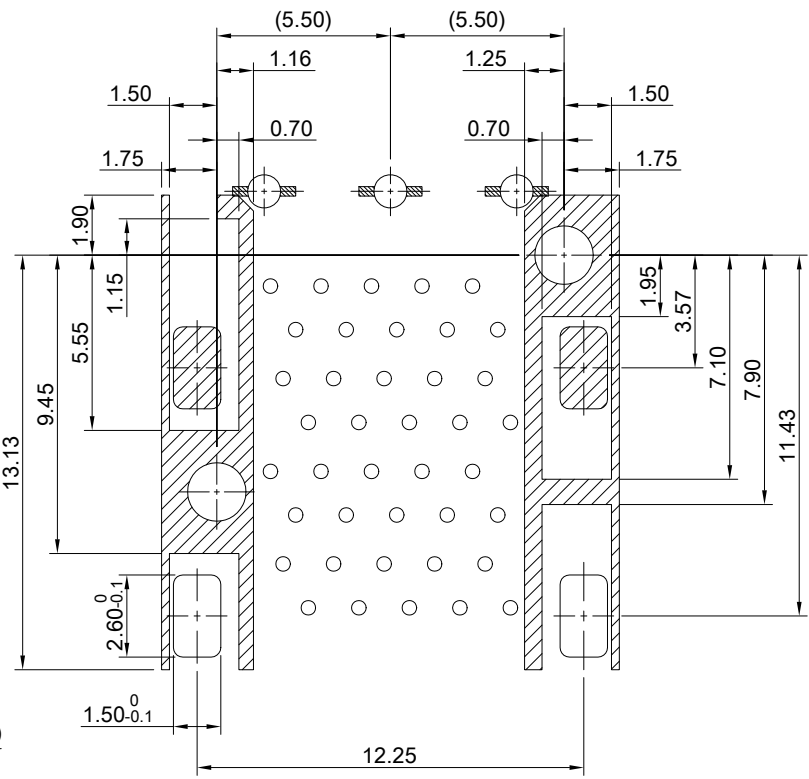
DRAWN:  
Laura

DATE:  
03/15/2024

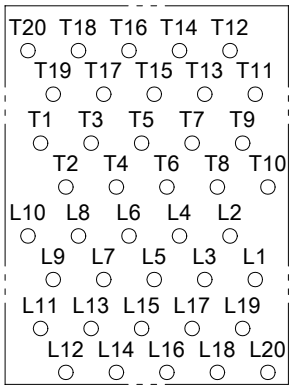
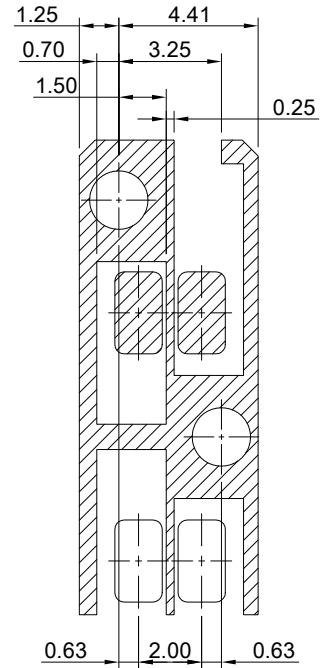


OUTER LIGHTS  
OUTLINE X 2PCS  
(OPTIONAL LED LAYOUT)

DETAIL D  
TOLERANCE:  $\pm 0.05$



KEEPOUT ZONE DETAIL



THIS PRINT IS  
**PRELIMINARY**  
UNQUALIFIED PRODUCT  
CONTACT PRODUCT ENGINEERING  
BEFORE USING THIS PRINT



TITLE: Stacked SFP+ 2x2 ASS'Y w/ Internal Thermal Solution & Light Pipe			
DWG#: R-OP-008080-7-F-N2-33		SHEET: 3/3	REV. REF
UNIT: mm	SCALE: A4 4:1	FINISH:	CHECKED:
TOLERANCE: Angle: $\pm 1^\circ$ X: $\pm 0.15$ .X: $\pm 0.10$ .XX: $\pm 0.05$		MATERIAL: RoHS Compliant	APPROVED:
THIRD ANGLE PROJECTION		DRAWN: Laura	DATE: 03/15/2024