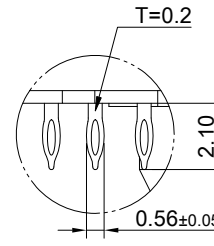
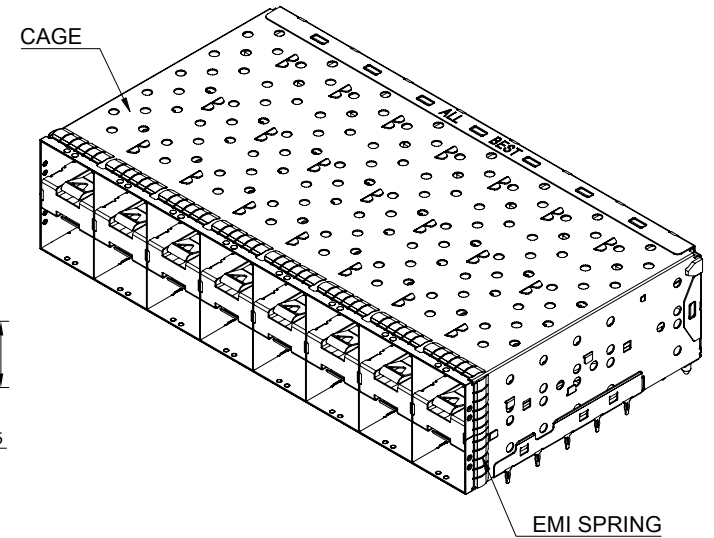


DETAIL A
SCALE 6:1



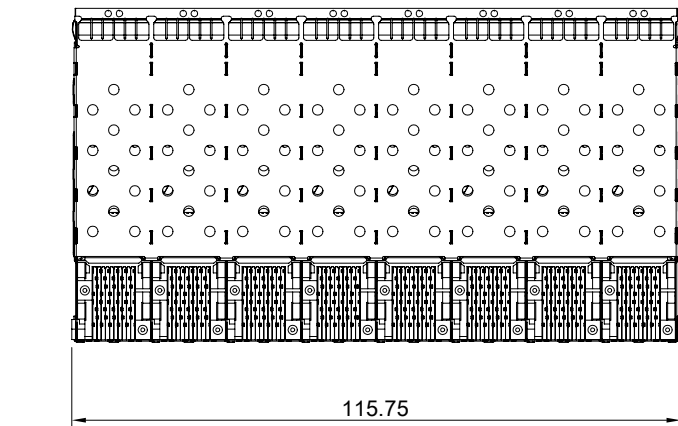
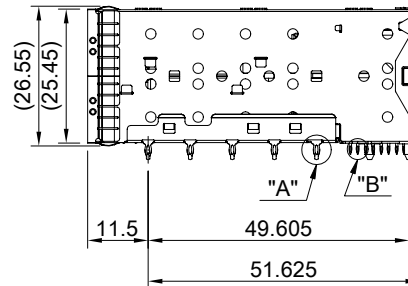
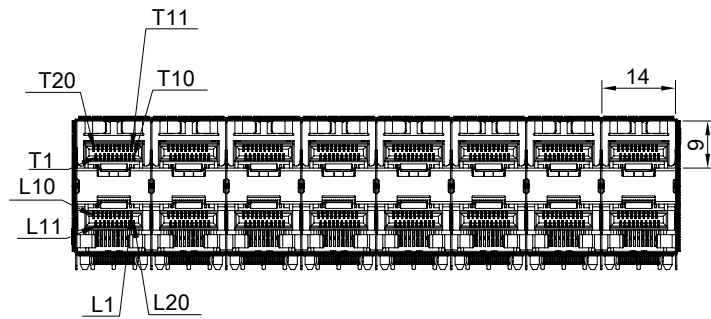
DETAIL B
SCALE 6:1



MATERIAL
CAGE: NICKEL SILVER
CONNECTOR: LCP 94V-0
COPPER ALLOY
EMI SPRING: STAINLESS STEEL

FINISH
CONTACT: 15µ" MIN. GOLD ON MATING END;
30µ" MIN. MATTE TIN ON TERMINATION END;
ALL UNDERPLATED 50µ" MIN. NICKEL

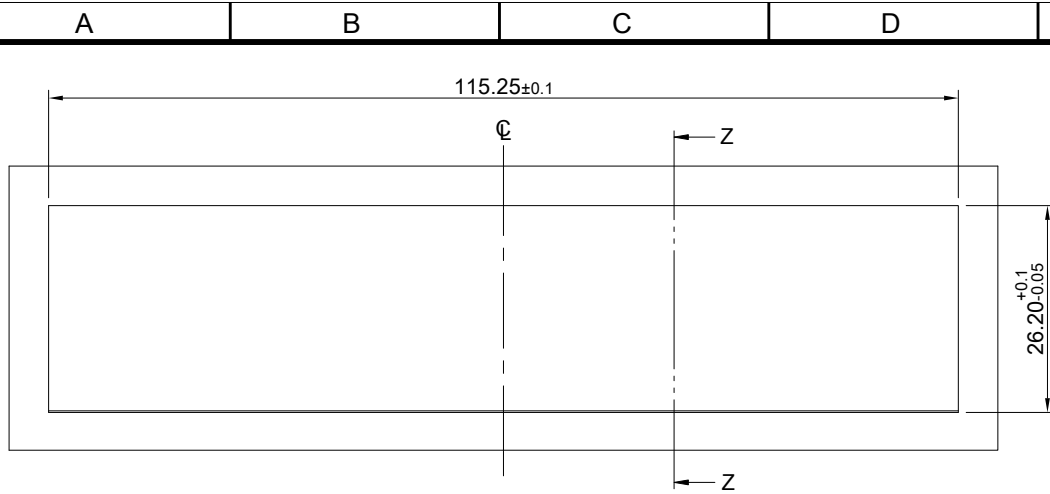
ELECTRICAL CHARACTERISTICS
CONTACT CURRENT RATING: 0.5 AMPERE
VOLTAGE RATING: 30 VAC
CONTACT RESISTANCE: 80 mΩ MAX.
DIELECTRIC WITHSTANDING VOLTAGE: 300VAC



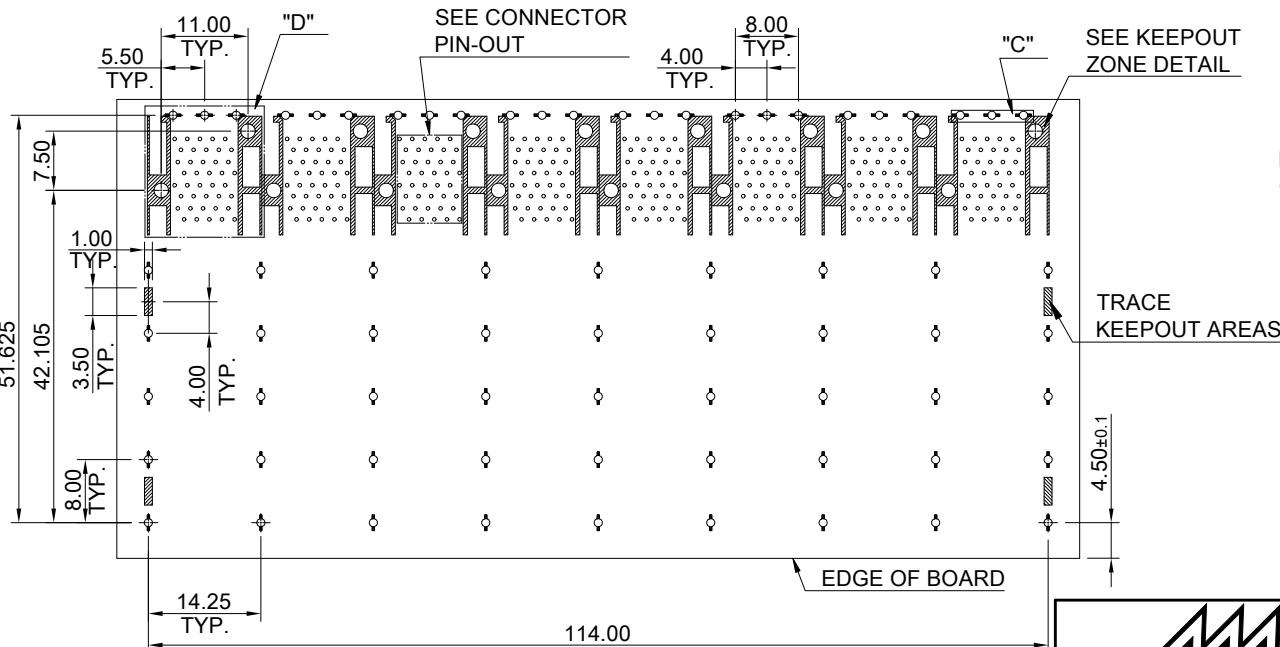
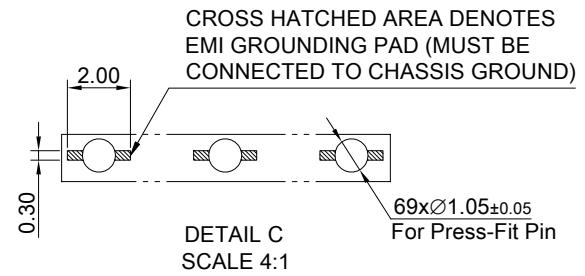
THIS PRINT IS
PRELIMINARY
UNQUALIFIED PRODUCT
CONTACT PRODUCT ENGINEERING
BEFORE USING THIS PRINT

ALL BEST
ELECTRONICS
CO., LTD.

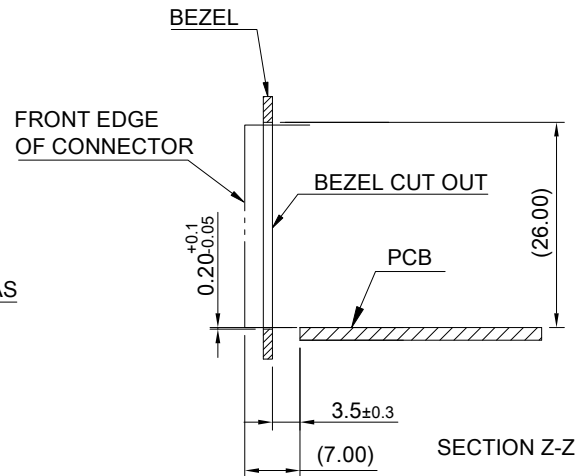
TITLE: Stacked SFP+ 2X8 ASS'Y w/ Internal Thermal Solution			
DWG#: R-OP-008320-6P-F-N2-26		SHEET: 1/3	REV. REF
UNIT: mm	SCALE: A4 2:3	FINISH:	CHECKED:
TOLERANCE: Angle: ± 1° X.± 0.25 .X± 0.20 .XX± 0.15		MATERIAL: RoHS Compliant	APPROVED:
THIRD ANGLE PROJECTION		DRAWN: Laura	DATE: 03/28/2024



RECOMMENDED BEZEL CUT-OUT SPACING DETAIL
BEZEL THICKNESS 0.8-2.6MM



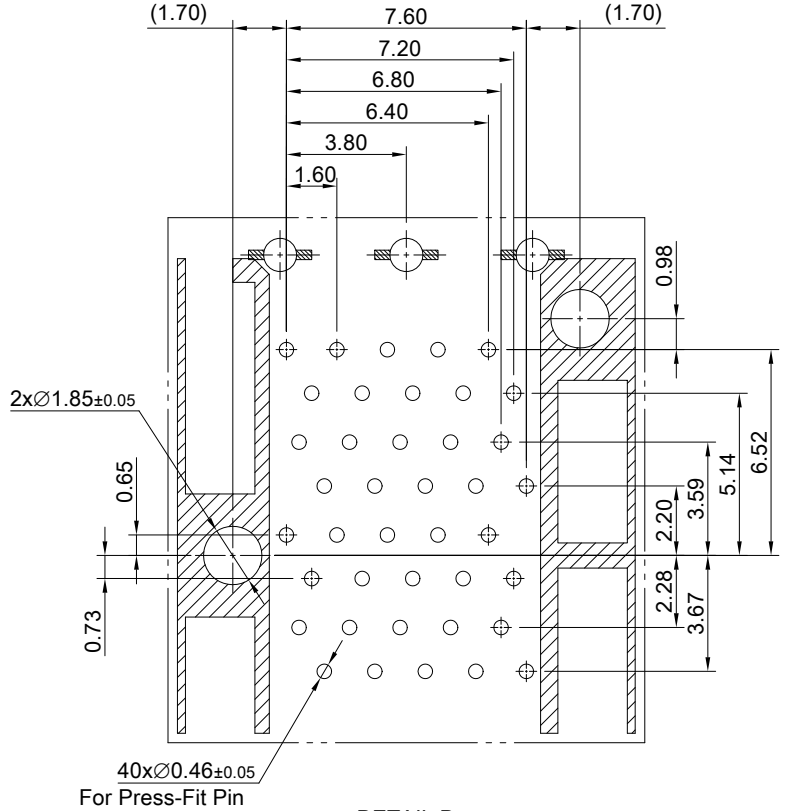
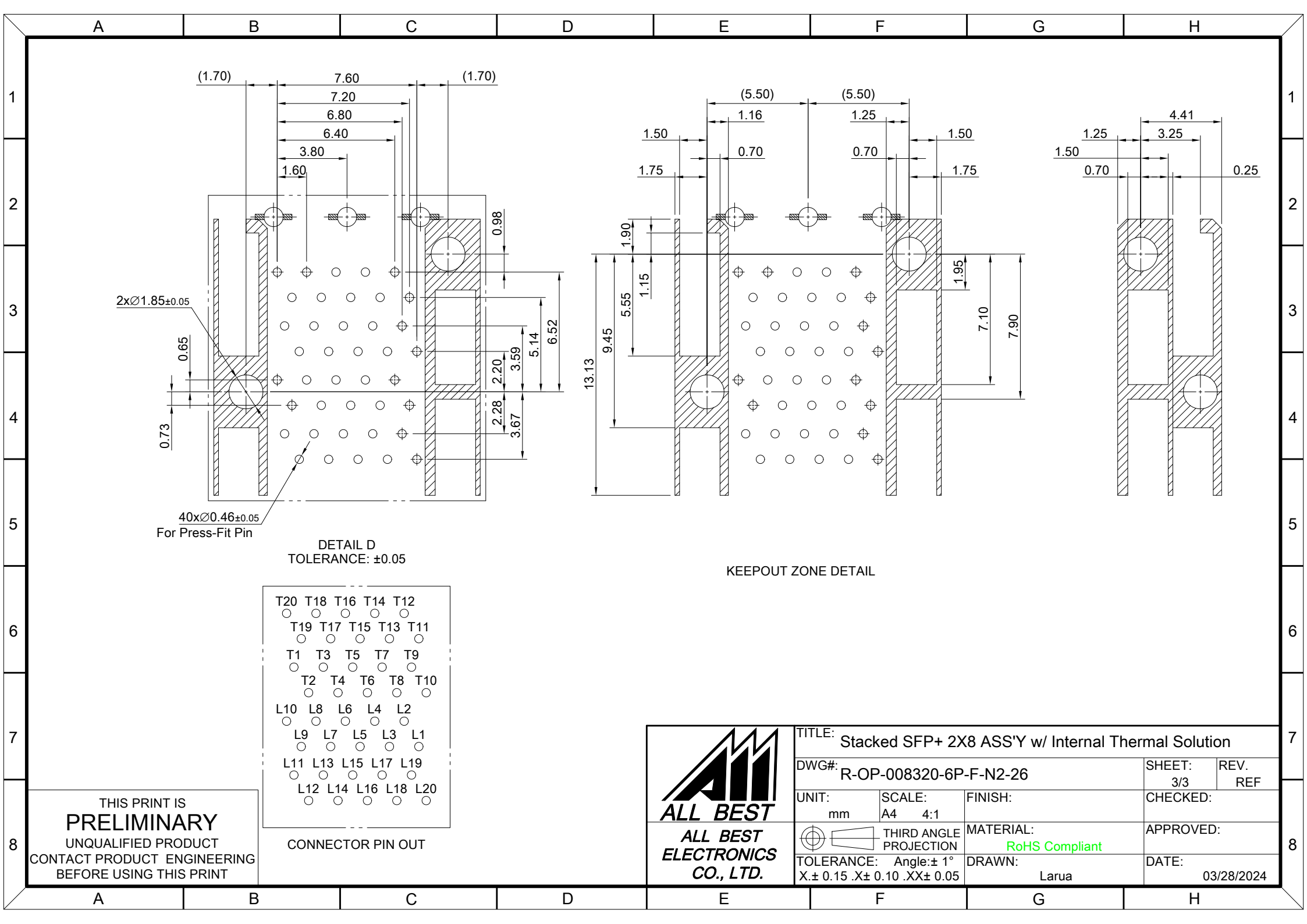
RECOMMENDED PCB LAYOUT-COMPONENT SIDE
TOLERANCE: ±0.05
RECOMMENDED PCB THICKNESS- 1.57 MM
THE ENTIRE AREA OF THE KEEPOUT AREA FOR
COMPONENTS
(OTHER THAN LIGHT PIPE LED'S)
THIS AREA IS INDICATED BY THE DASHED LINE



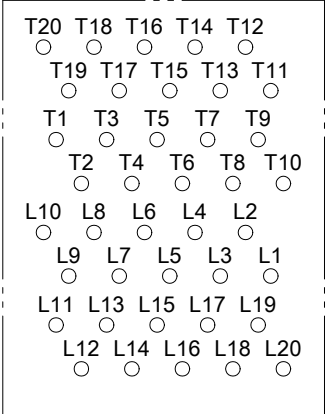
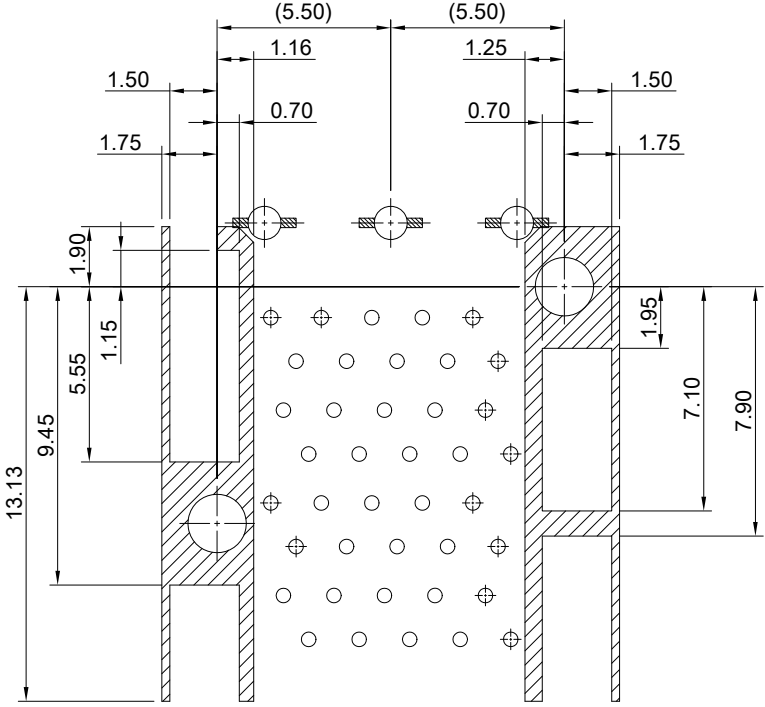
THIS PRINT IS
PRELIMINARY
UNQUALIFIED PRODUCT
CONTACT PRODUCT ENGINEERING
BEFORE USING THIS PRINT



TITLE: Stacked SFP+ 2X8 ASS'Y w/ Internal Thermal Solution			
DWG#: R-OP-008320-6P-F-N2-26		SHEET: 2/3	REV. REF
UNIT: mm	SCALE: A4 1:1	FINISH:	
TOLERANCE: Angle: ± 1°		MATERIAL: RoHS Compliant	
X.± 0.15 .X± 0.10 .XX± 0.05		DRAWN: Laura	DATE: 03/28/2024
THIRD ANGLE PROJECTION		CHECKED:	
		APPROVED:	



DETAIL D
TOLERANCE: ± 0.05



THIS PRINT IS
PRELIMINARY
UNQUALIFIED PRODUCT
CONTACT PRODUCT ENGINEERING
BEFORE USING THIS PRINT



TITLE: Stacked SFP+ 2X8 ASS'Y w/ Internal Thermal Solution			
DWG#: R-OP-008320-6P-F-N2-26		SHEET: 3/3	REV. REF
UNIT: mm	SCALE: A4 4:1	FINISH:	CHECKED:
TOLERANCE: Angle: $\pm 1^\circ$ X: ± 0.15 .X: ± 0.10 .XX: ± 0.05		MATERIAL: RoHS Compliant	APPROVED:
THIRD ANGLE PROJECTION		DRAWN: Larua	DATE: 03/28/2024