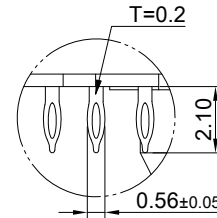
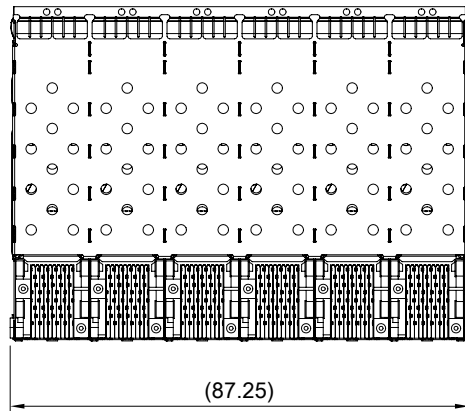
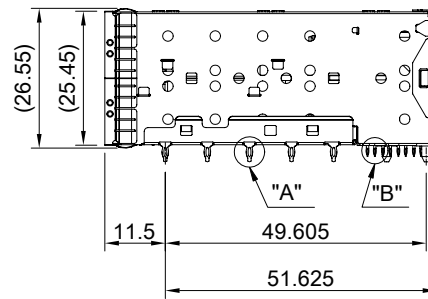
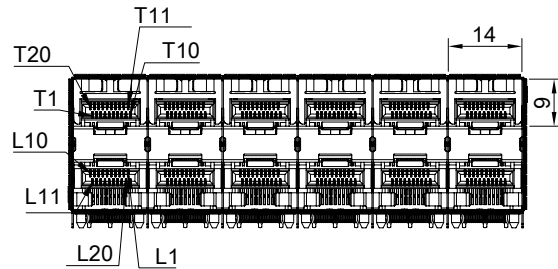
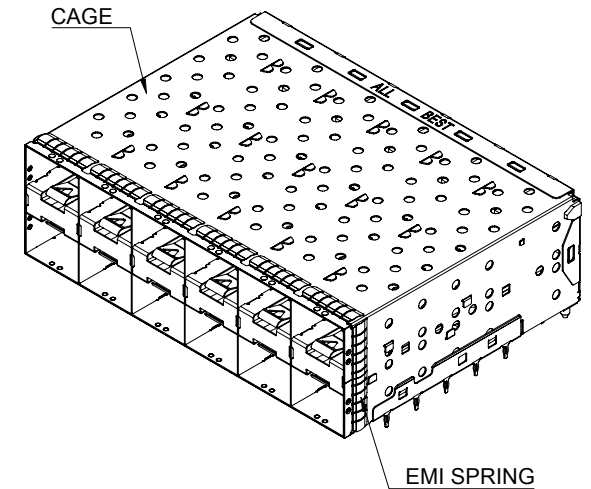


DETAIL A
SCALE 6:1



DETAIL B
SCALE 6:1



MATERIAL
CAGE: NICKEL SILVER
CONNECTOR: LCP 94V-0
COPPER ALLOY
EMI SPRING: STAINLESS STEEL

FINISH
CONTACT: 15μ" MIN. GOLD ON MATING END;
30μ" MIN. MATTE TIN ON TERMINATION END;
ALL UNDERPLATED 50μ" MIN. NICKEL

ELECTRICAL CHARACTERISTICS
CONTACT CURRENT RATING: 0.5 AMPERE
VOLTAGE RATING: 30 VAC
CONTACT RESISTANCE: 80 mΩ MAX.
DIELECTRIC WITHSTANDING VOLTAGE: 300VAC



**ALL BEST
ELECTRONICS
CO., LTD.**

THIS PRINT IS
PRELIMINARY
UNQUALIFIED PRODUCT
CONTACT PRODUCT ENGINEERING
BEFORE USING THIS PRINT

TITLE: Stacked SFP+ 2X6 ASS'Y w/ Internal Thermal Solution

DWG#: R-OP-008240-6P-F-N2-26

SHEET: 1/3
REV. REF

UNIT: mm

SCALE: A4 2:3

FINISH:

CHECKED:

THIRD ANGLE PROJECTION

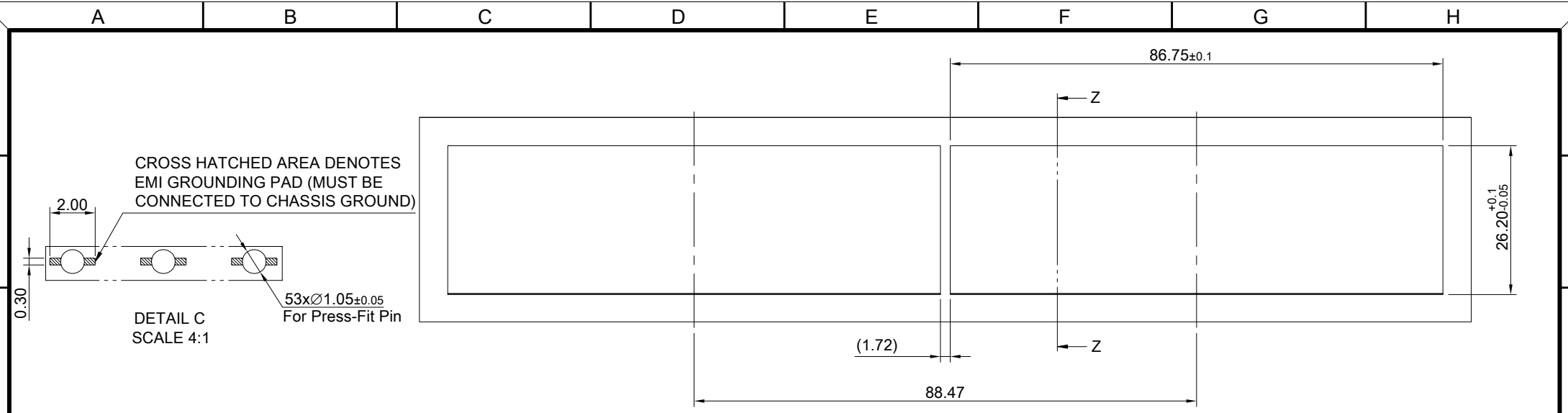
MATERIAL: **RoHS Compliant**

APPROVED:

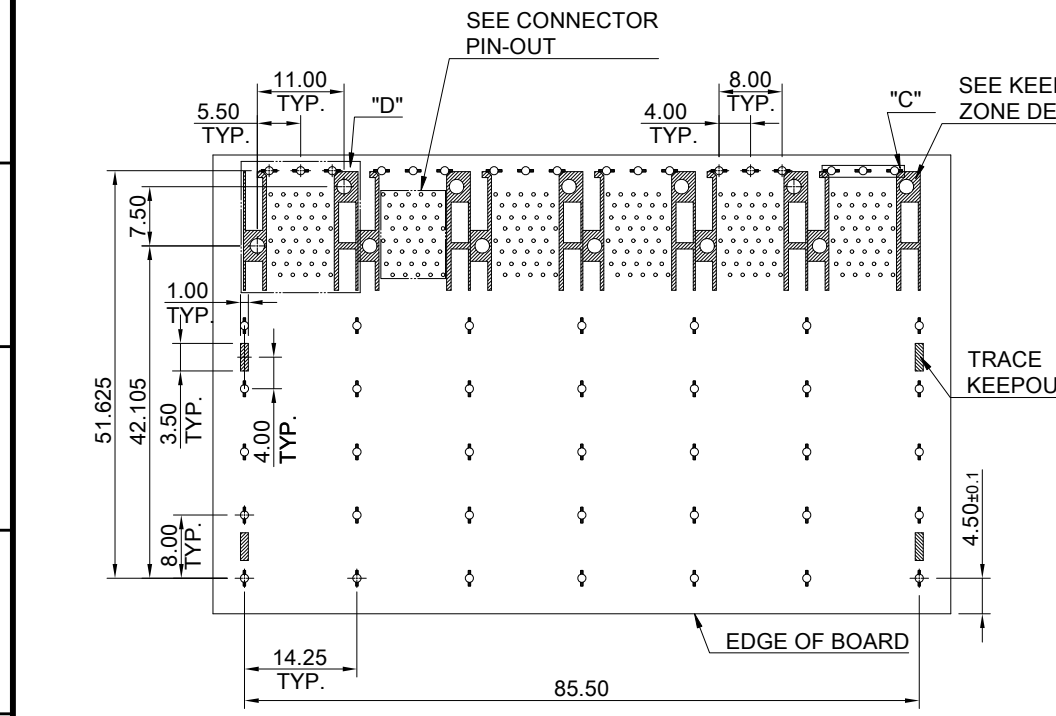
TOLERANCE: Angle: ± 1°
X.± 0.25 .X± 0.20 .XX± 0.15

DRAWN: Laura

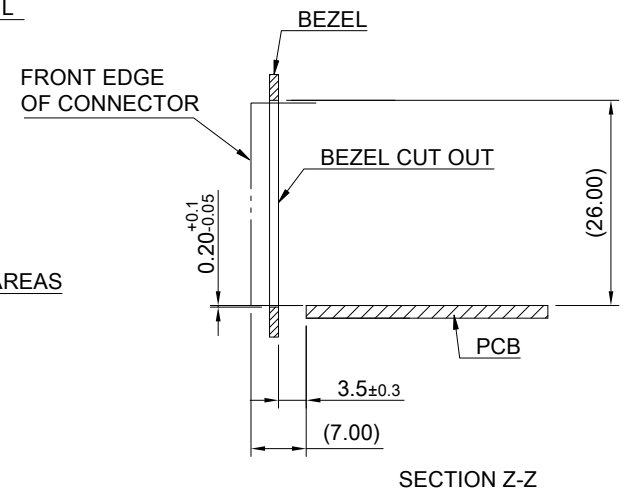
DATE: 03/28/2024



RECOMMENDED BEZEL CUT-OUT SPACING DETAIL
BEZEL THICKNESS 0.8~2.6MM



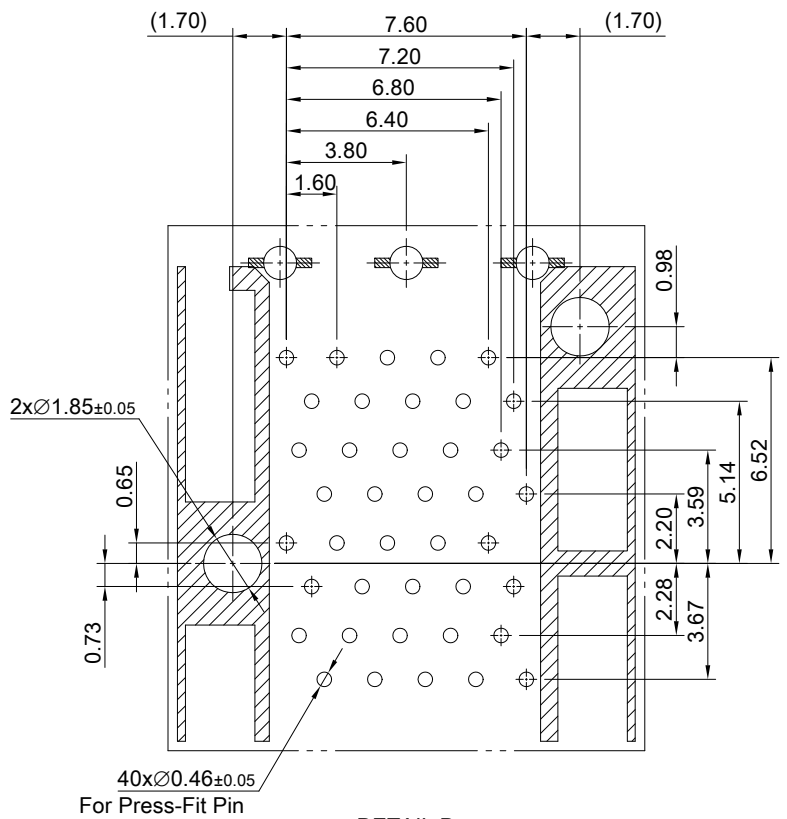
RECOMMENDED PCB LAYOUT
TOLERANCE:±0.05
MINIMUM PCB THICKNESS OF 1.57mm



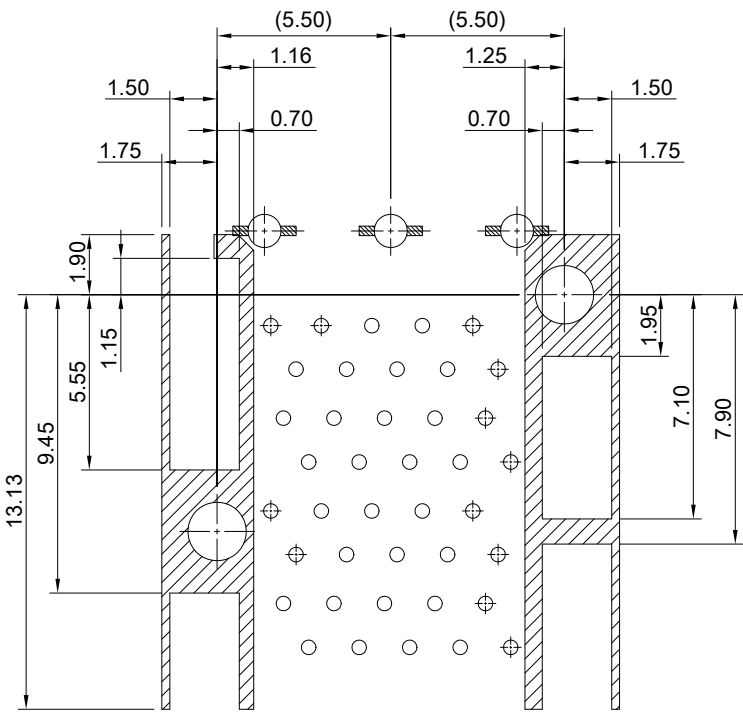
SECTION Z-Z

THIS PRINT IS
PRELIMINARY
UNQUALIFIED PRODUCT
CONTACT PRODUCT ENGINEERING
BEFORE USING THIS PRINT

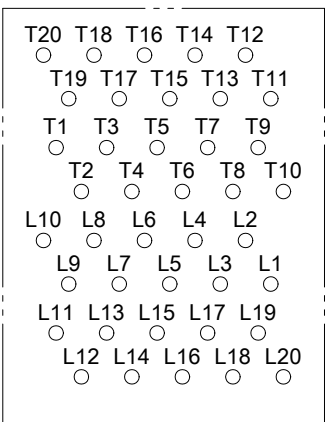
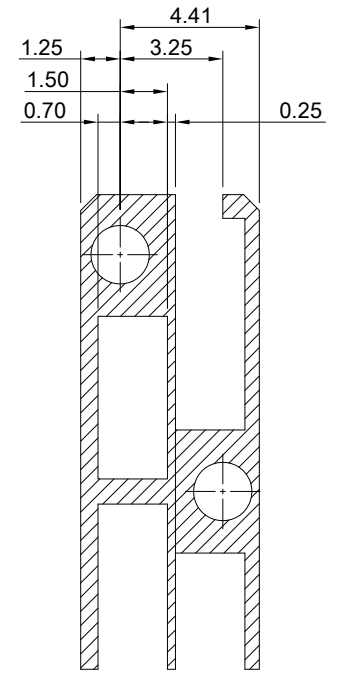
	TITLE: Stacked SFP+ 2X6 ASS'Y w/ Internal Thermal Solution		
	DWG#: R-OP-008240-6P-F-N2-26		SHEET: 2/3
	UNIT: mm	SCALE: A4 1:1	FINISH:
	TOLERANCE: Angle:± 1° X.± 0.15 .X± 0.10 .XX± 0.05		MATERIAL: RoHS Compliant
THIRD ANGLE PROJECTION		DRAWN: Laura	APPROVED:
		DATE: 03/28/2024	REF



DETAIL D
TOLERANCE: ±0.05



KEEPOUT ZONE DETAIL



CONNECTOR PIN OUT

THIS PRINT IS
PRELIMINARY
UNQUALIFIED PRODUCT
CONTACT PRODUCT ENGINEERING
BEFORE USING THIS PRINT

<p>ALL BEST ELECTRONICS CO., LTD.</p>	TITLE: Stacked SFP+ 2X6 ASS'Y w/ Internal Thermal Solution		SHEET: 3/3	REV. REF	
	DWG#: R-OP-008240-6P-F-N2-26		CHECKED:		
	UNIT: mm	SCALE: A4 4:1	FINISH:	APPROVED:	
	TOLERANCE: Angle: ± 1° X.± 0.15 .X± 0.10 .XX± 0.05		MATERIAL: RoHS Compliant	DATE: 03/28/2024	
		THIRD ANGLE PROJECTION	DRAWN: Laura		