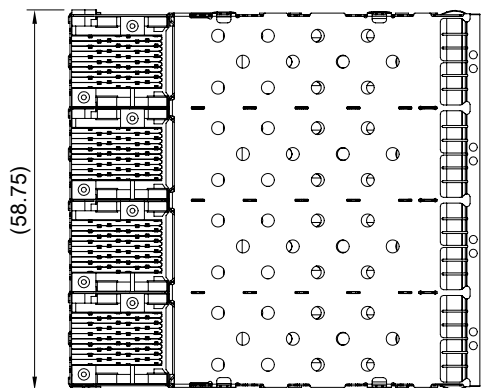


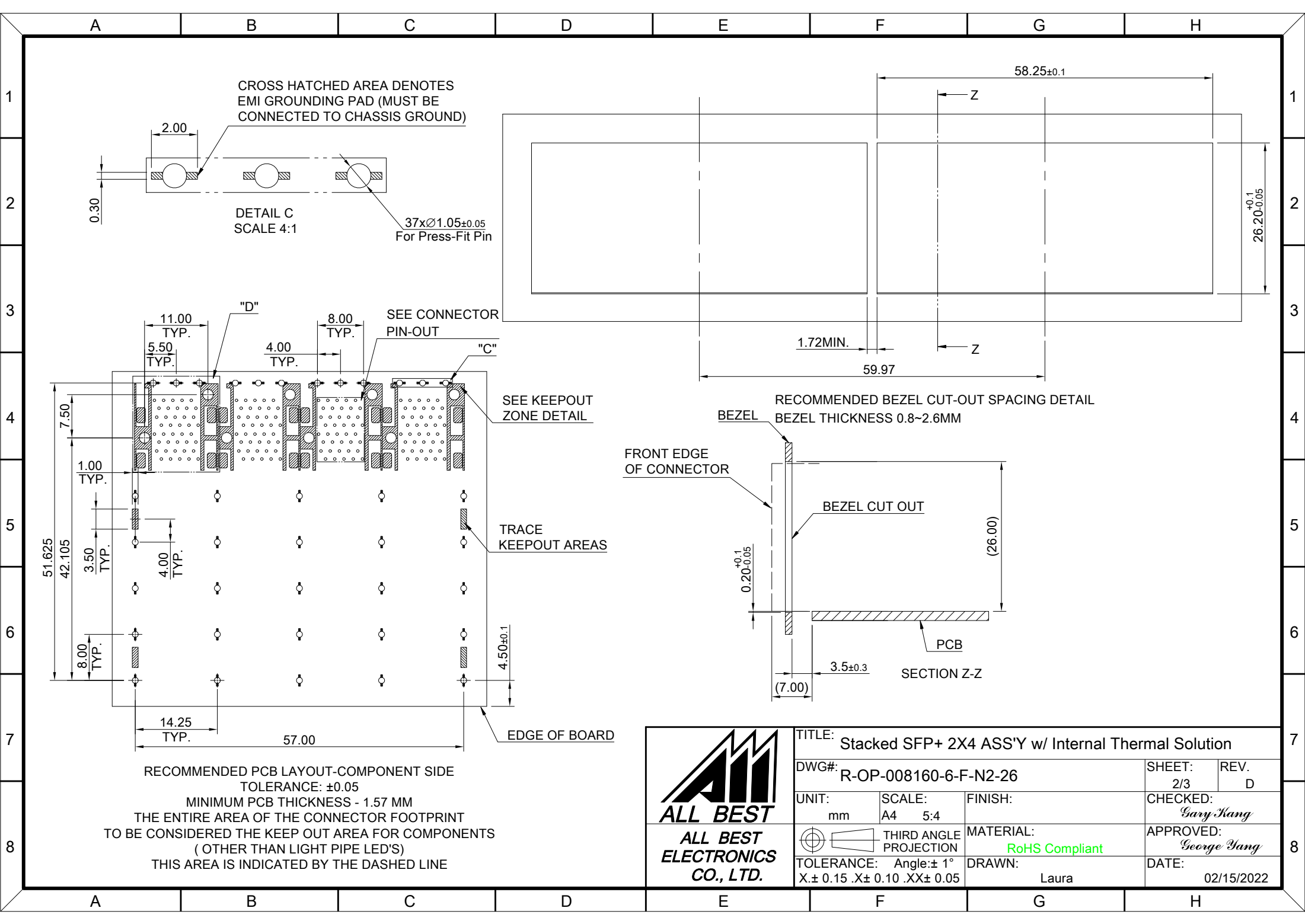
MATERIAL
CAGE: NICKEL SILVER
CONNECTOR: LCP 94V-0
COPPER ALLOY
EMI SPRING: STAINLESS STEEL

FINISH
CONTACT: 15 μ " MIN. GOLD ON MATING END;
30 μ " MIN. MATTE TIN ON TERMINATION END;
ALL UNDERPLATED 50 μ " MIN. NICKEL

ELECTRICAL CHARACTERISTICS
CONTACT CURRENT RATING: 0.5 AMPERE
VOLTAGE RATING: 30 VAC
CONTACT RESISTANCE: 80 m Ω MAX.
DIELECTRIC WITHSTANDING VOLTAGE: 300VAC



	TITLE: Stacked SFP+ 2X4 ASS'Y w/ Internal Thermal Solution			
	DWG#: R-OP-008160-6-F-N2-26		SHEET: 1/3	REV. D
	UNIT: mm	SCALE: A4 1:1	CHECKED: Gary Yang	
	THIRD ANGLE PROJECTION		MATERIAL: RoHS Compliant	APPROVED: George Yang
TOLERANCE: Angle: ± 1°		DRAWN: Laura	DATE: 02/15/2022	
X ± 0.25 .X ± 0.20 .XX ± 0.15				



CROSS HATCHED AREA DENOTES EMI GROUNDING PAD (MUST BE CONNECTED TO CHASSIS GROUND)

DETAIL C SCALE 4:1

37xØ1.05±0.05 For Press-Fit Pin

"D" 11.00 TYP. 8.00 TYP. SEE CONNECTOR PIN-OUT "C"

SEE KEEPOUT ZONE DETAIL

TRACE KEEPOUT AREAS

EDGE OF BOARD

RECOMMENDED PCB LAYOUT-COMPONENT SIDE TOLERANCE: ±0.05

MINIMUM PCB THICKNESS - 1.57 MM

THE ENTIRE AREA OF THE CONNECTOR FOOTPRINT TO BE CONSIDERED THE KEEP OUT AREA FOR COMPONENTS (OTHER THAN LIGHT PIPE LED'S)

THIS AREA IS INDICATED BY THE DASHED LINE

RECOMMENDED BEZEL CUT-OUT SPACING DETAIL BEZEL THICKNESS 0.8~2.6MM

FRONT EDGE OF CONNECTOR

BEZEL CUT OUT

SECTION Z-Z

3.5±0.3

0.20±0.05

(26.00)

PCB

(7.00)

1.72MIN.

59.97

58.25±0.1

±0.1
26.20±0.05



TITLE: Stacked SFP+ 2X4 ASS'Y w/ Internal Thermal Solution

DWG#: R-OP-008160-6-F-N2-26

UNIT: mm SCALE: A4 5:4

THIRD ANGLE PROJECTION

TOLERANCE: Angle: ±1° X: ±0.15 .X: ±0.10 .XX: ±0.05

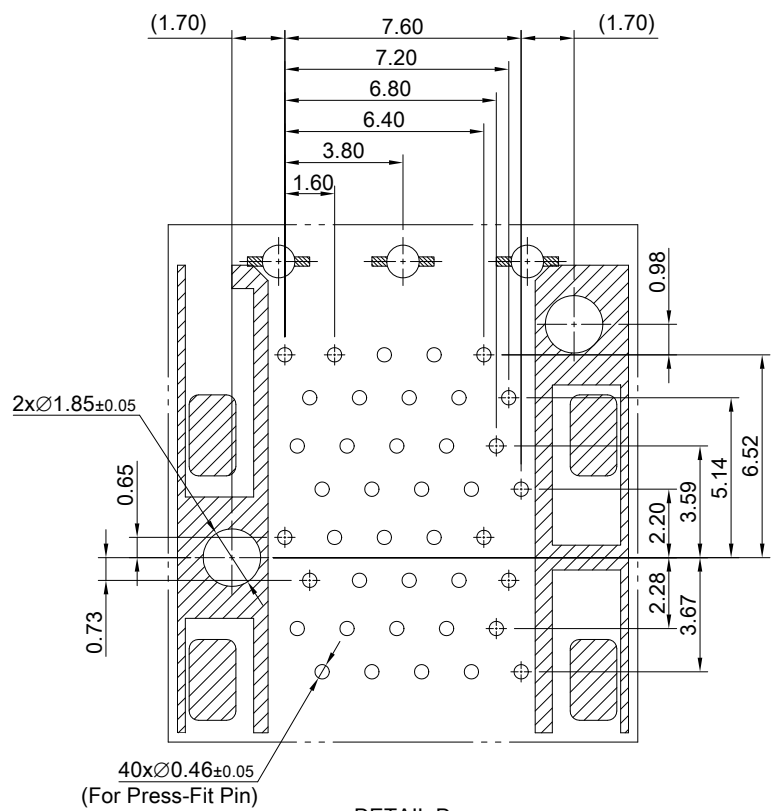
SHEET: 2/3 REV. D

CHECKED: Gary Yang

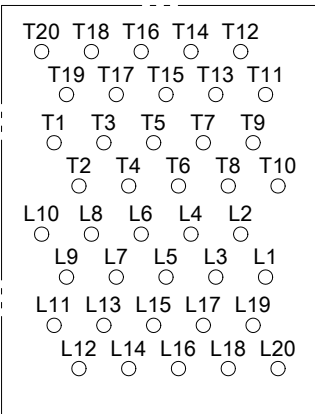
APPROVED: George Yang

MATERIAL: RoHS Compliant

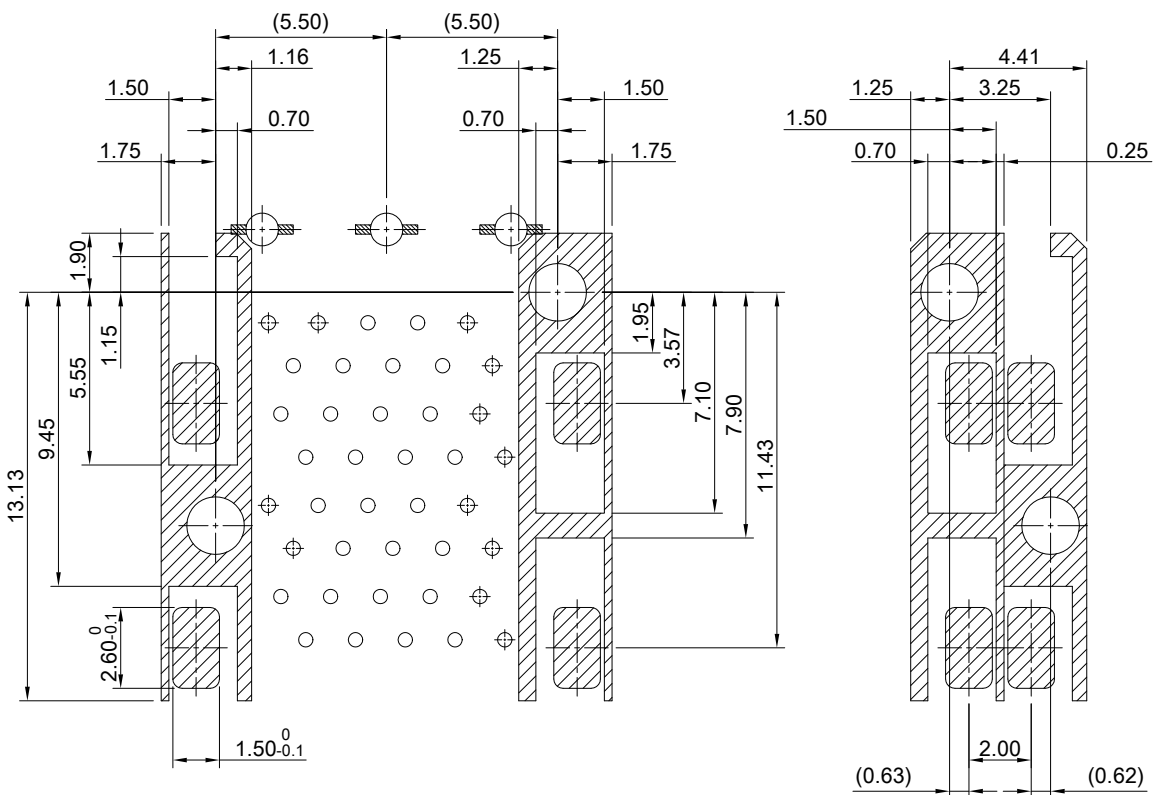
DRAWN: Laura DATE: 02/15/2022



DETAIL D
TOLERANCE: ±0.05



CONNECTOR PIN OUT



KEEPOUT ZONE DETAIL



TITLE: Stacked SFP+ 2X4 ASS'Y w/ Internal Thermal Solution			
DWG#: R-OP-008160-6-F-N2-26		SHEET: 3/3	REV. D
UNIT: mm	SCALE: A4 4:1	FINISH:	CHECKED: Gary Yang
THIRD ANGLE PROJECTION		MATERIAL: RoHS Compliant	APPROVED: George Yang
TOLERANCE: Angle: ± 1° X: ± 0.15 .X ± 0.10 .XX ± 0.05		DRAWN: Laura	DATE: 02/15/2022