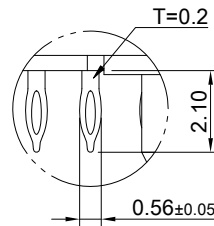
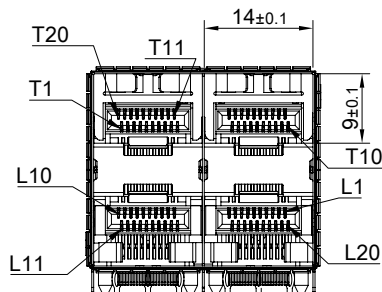
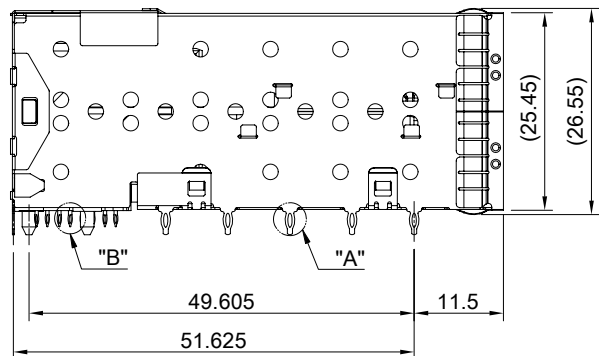
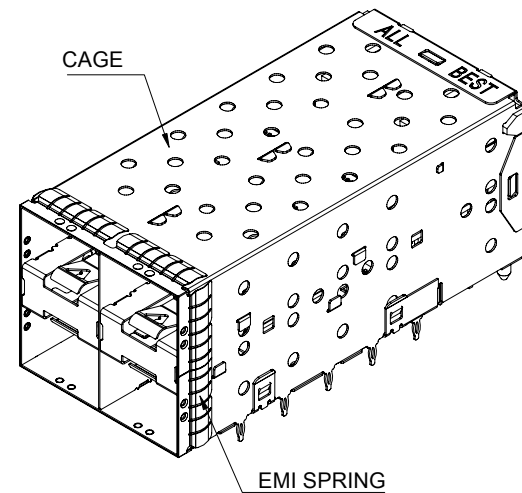


DETAIL A  
SCALE 5:1



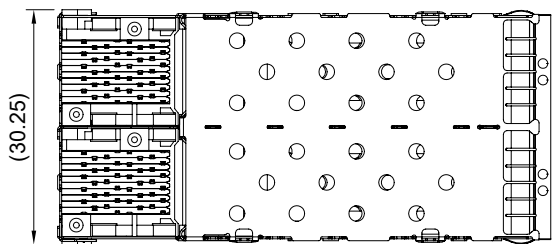
DETAIL B  
SCALE 5:1



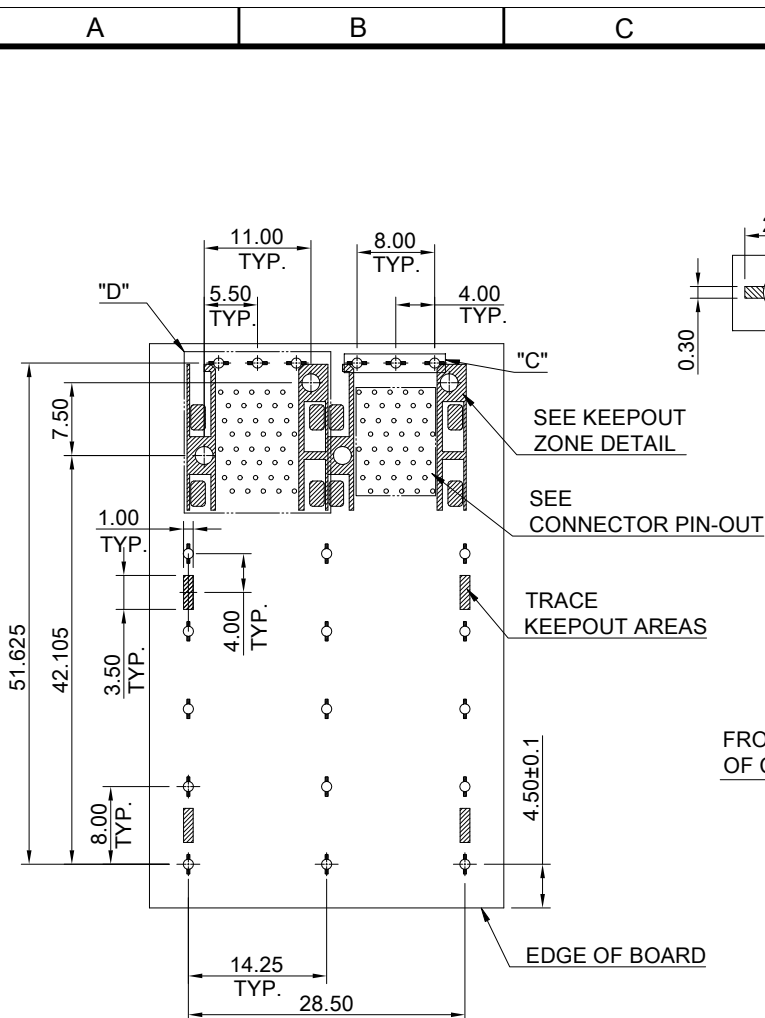
MATERIAL  
 CAGE: NICKEL SILVER  
 CONNECTOR: LCP 94V-0  
 COPPER ALLOY  
 EMI SPRING: STAINLESS STEEL

FINISH  
 CONTACT: 15µ" MIN. GOLD ON MATING END;  
 120µ" MIN. MATTE TIN ON TERMINATION END;  
 ALL UNDERPLATED 50µ" MIN. NICKEL

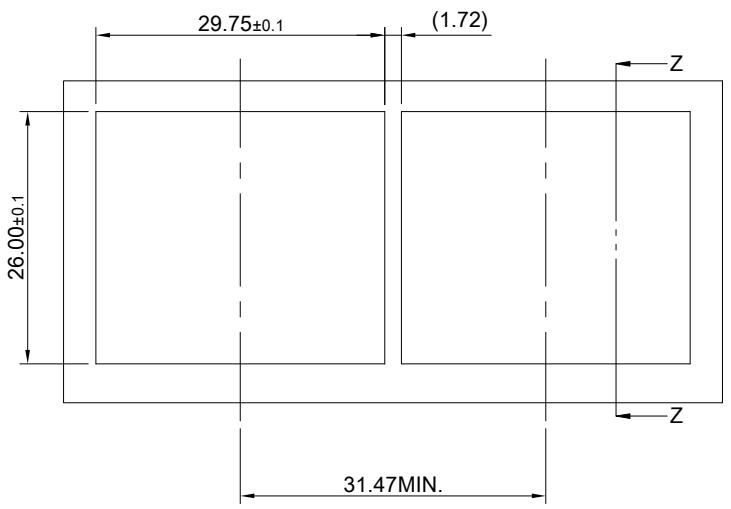
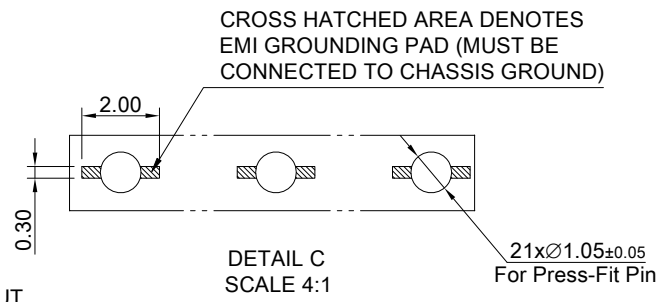
ELECTRICAL CHARACTERISTICS  
 CONTACT CURRENT RATING: 0.5 AMPERE  
 VOLTAGE RATING: 30 VAC  
 CONTACT RESISTANCE: 80 mΩ MAX.  
 DIELECTRIC WITHSTANDING VOLTAGE: 300VAC



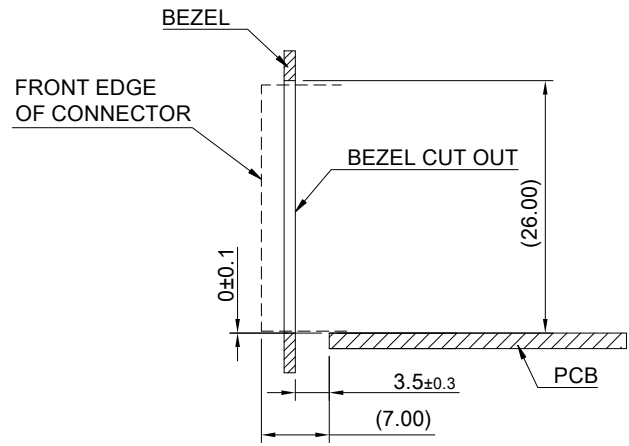
	TITLE: Stacked SFP+ 2X2 ASS'Y w/ Internal Thermal Solution			SHEET: 1/3		REV. D	
	DWG#: R-OP-008080-6-F-N2-26			CHECKED: Gary Kang		APPROVED: George Yang	
	UNIT: mm	SCALE: A4 1:1	FINISH:	MATERIAL: RoHS Compliant		DATE: 04/21/2021	
	TOLERANCE: X±0.25 .X±0.20 .XX±0.15		THIRD ANGLE PROJECTION	DRAWN: Laura			



RECOMMENDED PCB LAYOUT  
 TOLERANCE: ±0.05  
 MINIMUM PCB THICKNESS OF 1.57MM

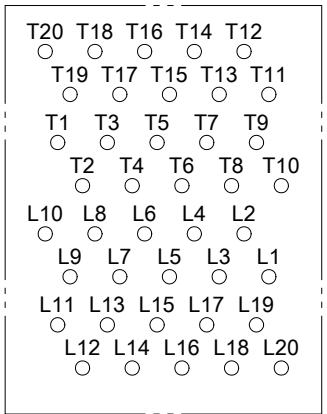
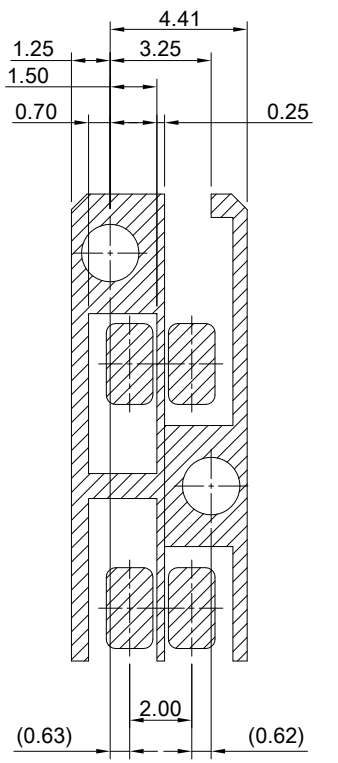
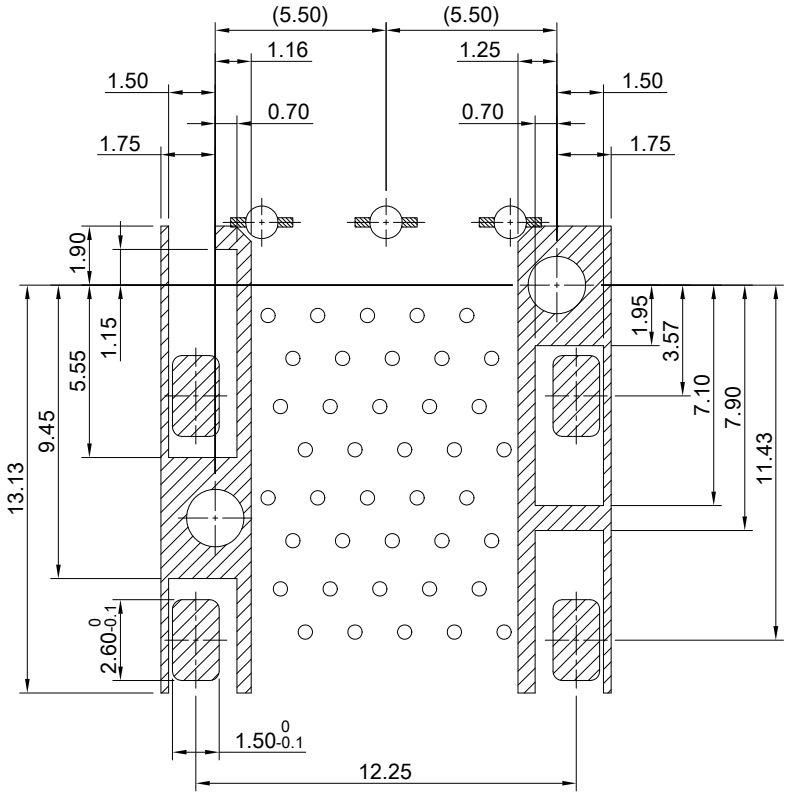
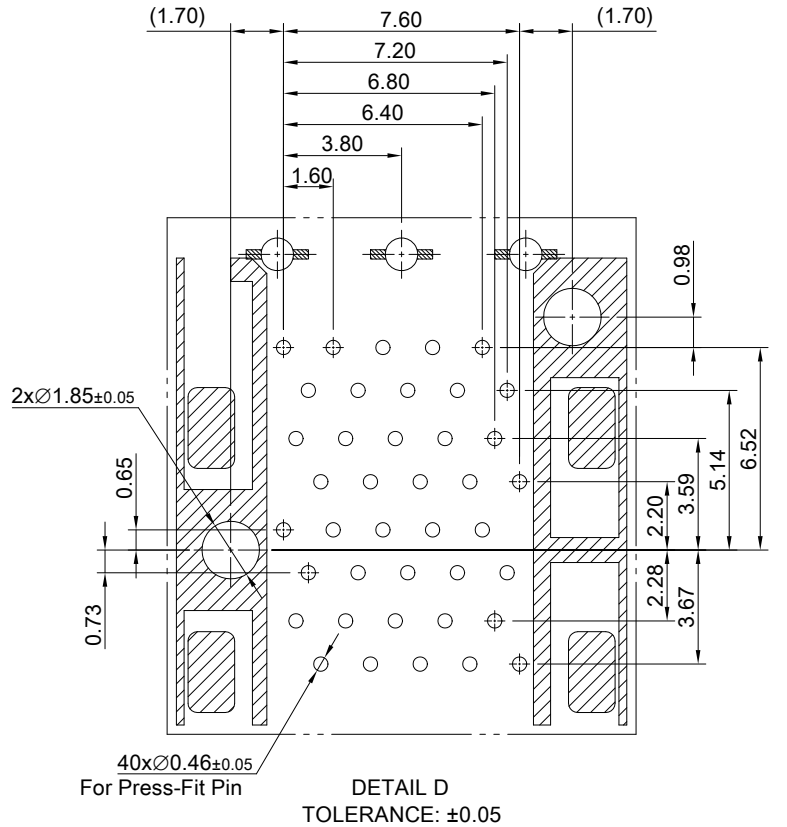
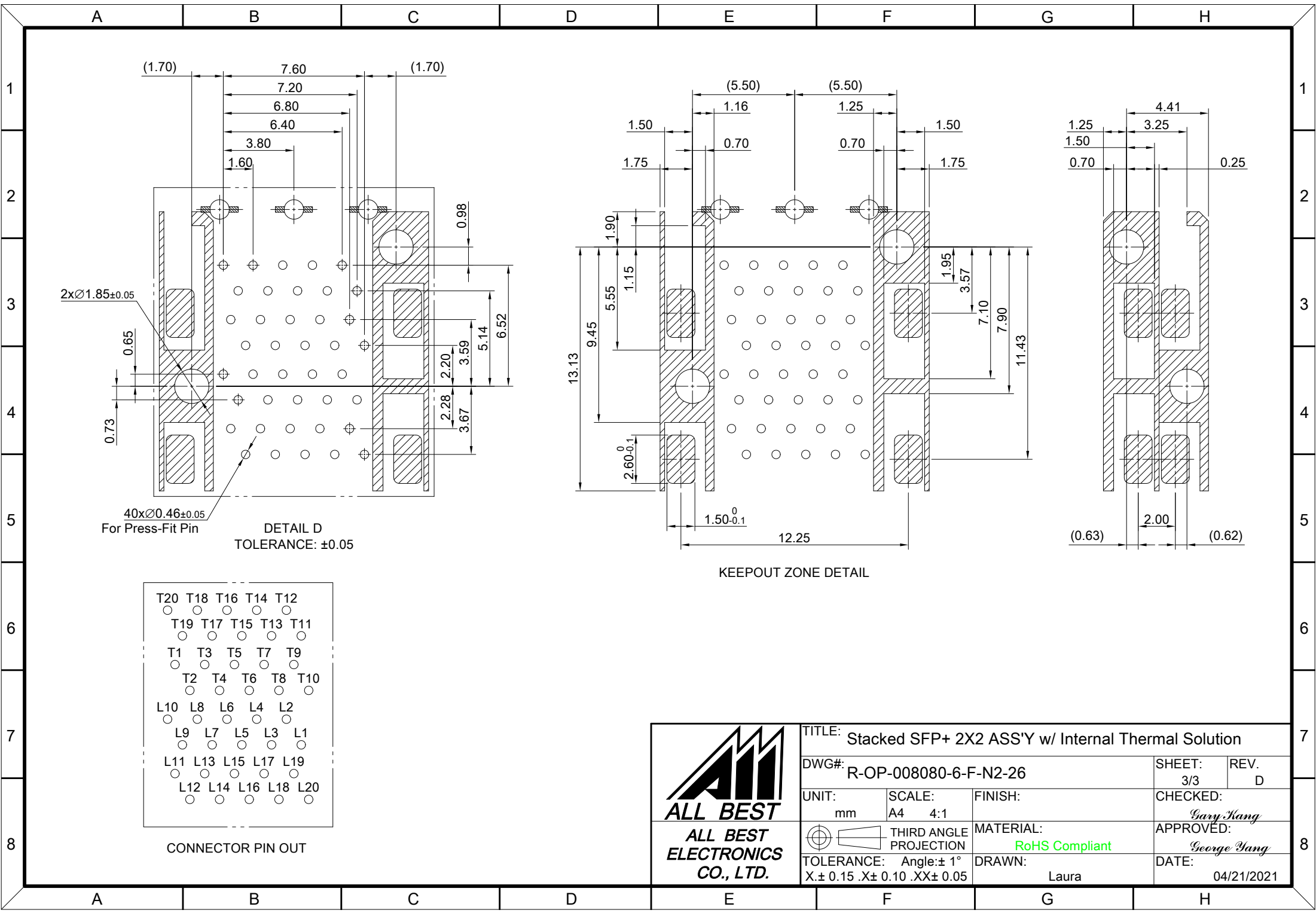


RECOMMENDED BEZEL CUT-OUT SPACING DETAIL  
 BEZEL THICKNESS 0.8~2.6MM



SECTION Z-Z

	TITLE: Stacked SFP+ 2X2 ASS'Y w/ Internal Thermal Solution			SHEET: 2/3		REV. D
	DWG#: R-OP-008080-6-F-N2-26			CHECKED: Gary Kang		
	UNIT: mm	SCALE: A4 5:4	FINISH:	APPROVED: George Yang		
	TOLERANCE: X±0.15 .X±0.10 .XX±0.05		THIRD ANGLE PROJECTION	MATERIAL: RoHS Compliant	DATE: 04/21/2021	
			DRAWN: Laura			



CONNECTOR PIN OUT

KEEPOUT ZONE DETAIL



TITLE: Stacked SFP+ 2X2 ASS'Y w/ Internal Thermal Solution			
DWG#: R-OP-008080-6-F-N2-26		SHEET: 3/3	REV. D
UNIT: mm	SCALE: A4 4:1	CHECKED: Gary Kang	
THIRD ANGLE PROJECTION		APPROVED: George Yang	
TOLERANCE: Angle: ± 1° X ± 0.15 .XX ± 0.10 .XX ± 0.05		MATERIAL: RoHS Compliant	DATE: 04/21/2021
		DRAWN: Laura	