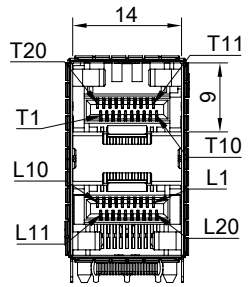
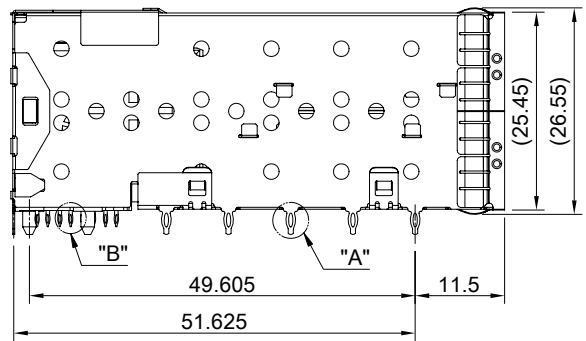
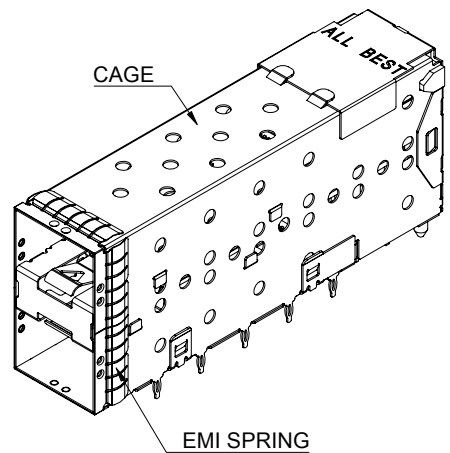


DETAIL A
SCALE 5:1

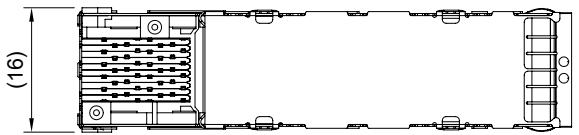
DETAIL B
SCALE 5:1



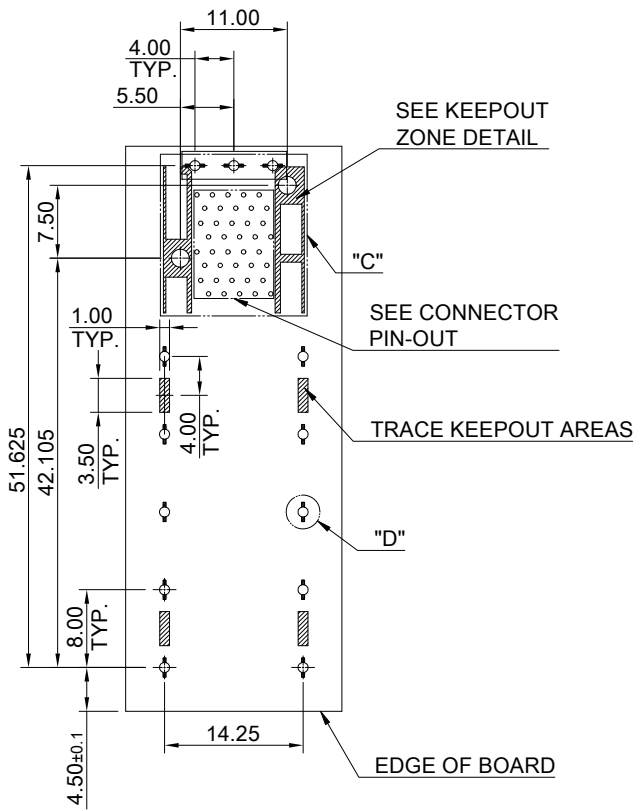
MATERIAL
CAGE: NICKEL SILVER
CONNECTOR: LCP 94V-0
COPPER ALLOY
EMI SPRING: STAINLESS STEEL

FINISH
CONTACT: 15μ" MIN. GOLD ON MATING END;
30μ" MIN. MATTE TIN ON TERMINATION END;
ALL UNDERPLATED 50μ" MIN. NICKEL

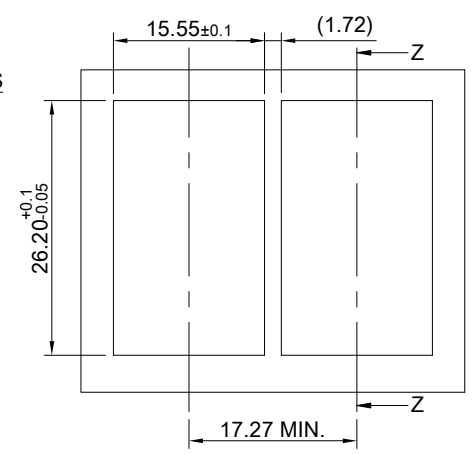
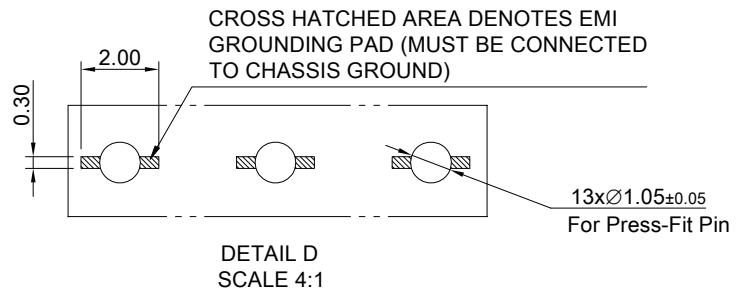
ELECTRICAL CHARACTERISTICS
CONTACT CURRENT RATING: 0.5 AMPERE
VOLTAGE RATING: 30V AC
CONTACT RESISTANCE: 80 mΩ MAX.
DIELECTRIC WITHSTANDING VOLTAGE: 300VAC



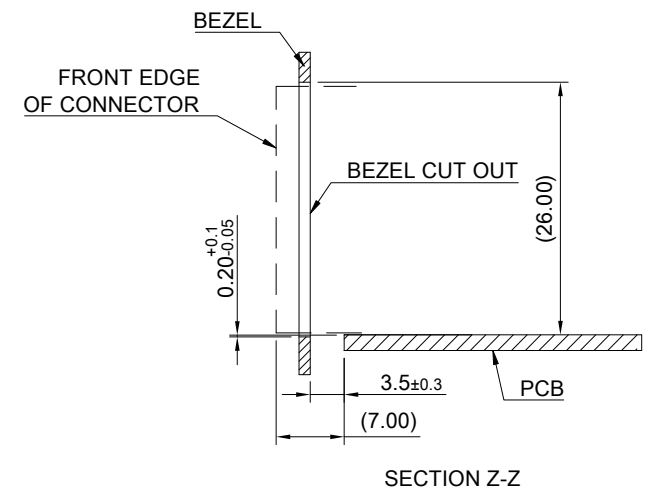
TITLE: Stacked SFP+ 2X1 ASS'Y w/ Internal Thermal Solution			
DWG#: R-DP-008040-6-F-N2-26		SHEET: 1/3	REV. E
UNIT: mm	SCALE: A4 1:1	CHECKED: Gary Kang	
THIRD ANGLE PROJECTION		APPROVED: George Yang	
TOLERANCE: Angle: ± 1° X.± 0.25 .XX± 0.15		MATERIAL: RoHS Compliant	DATE: 07/14/2022
		DRAWN: Laura	



RECOMMENDED PCB LAYOUT
 TOLERANCE: ±0.05
 MINIMUM PCB THICKNESS OF 1.57MM

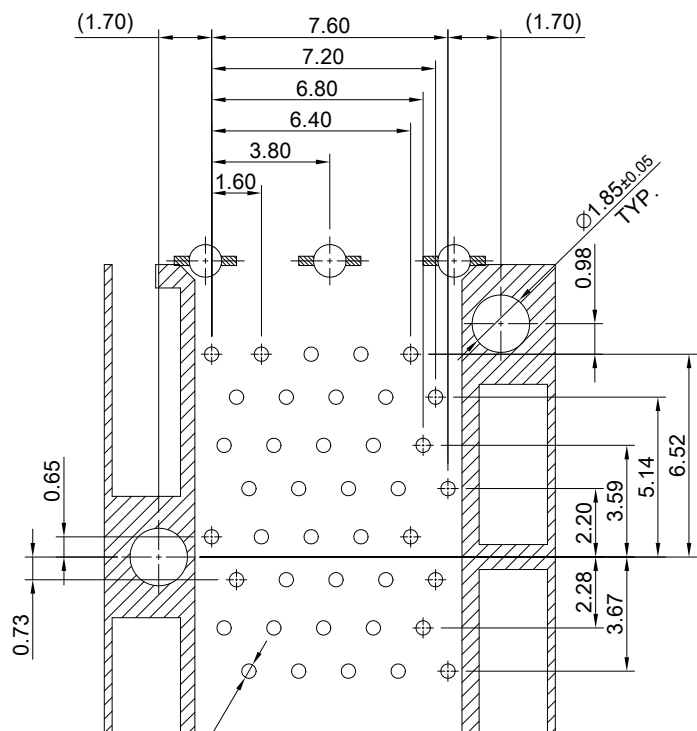


RECOMMENDED BEZEL CUT-OUT SPACING DETAIL
 BEZEL THICKNESS 0.8~2.6MM



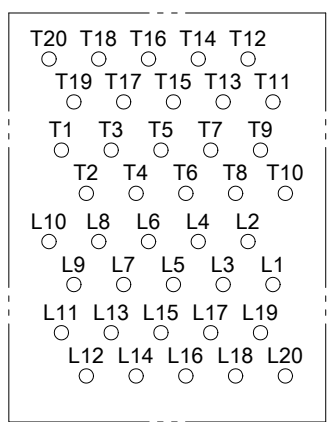
SECTION Z-Z

	TITLE: Stacked SFP+ 2X1 ASS'Y w/ Internal Thermal Solution			SHEET: 2/3		REV. E	
	DWG#: R-DP-008040-6-F-N2-26			CHECKED: Gary Kang		APPROVED: George Yang	
	UNIT: mm	SCALE: A4 5:4	FINISH:	MATERIAL: RoHS Compliant		DATE: 07/14/2022	
	TOLERANCE: X±0.15 .X±0.10 .XX±0.05		THIRD ANGLE PROJECTION	DRAWN: Laura			
			Angle: ±1°				

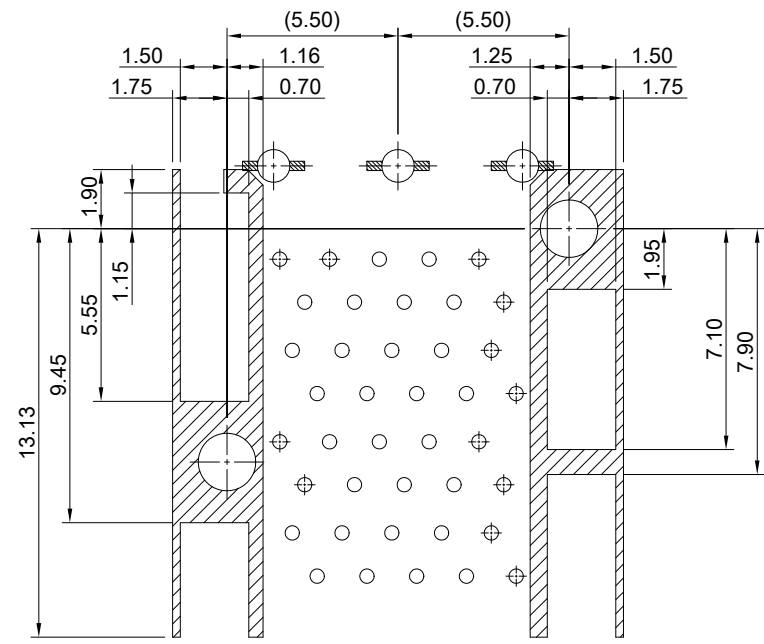


40x $\varnothing 0.46_{\pm 0.05}$
(For Press-Fit Pin)

DETAIL C
TOLERANCE: ± 0.05



CONNECTOR PIN OUT



KEEPOUT ZONE DETAIL

<p>ALL BEST ELECTRONICS CO., LTD.</p>	TITLE: Stacked SFP+ 2X1 ASS'Y w/ Internal Thermal Solution			SHEET: 3/3		REV.: E	
	DWG#: R-DP-008040-6-F-N2-26			CHECKED: Gary Kang		APPROVED: George Yang	
	UNIT: mm	SCALE: A4 4:1	FINISH:	MATERIAL: RoHS Compliant		DATE: 07/14/2022	
	TOLERANCE: Angle: $\pm 1^\circ$ X: ± 0.15 .X: ± 0.10 .XX: ± 0.05			DRAWN: Laura			

