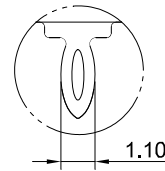
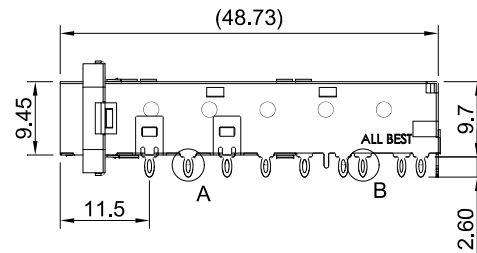
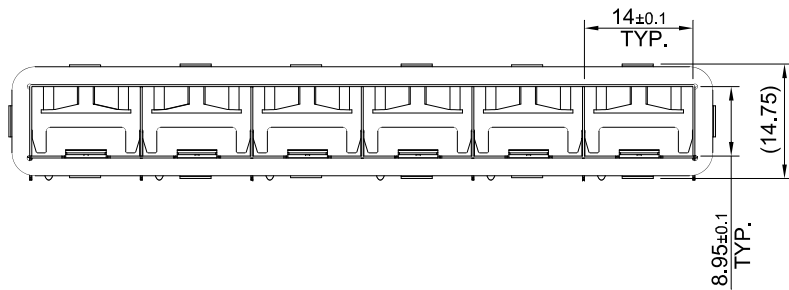


DETAIL A
SCALE 4:1

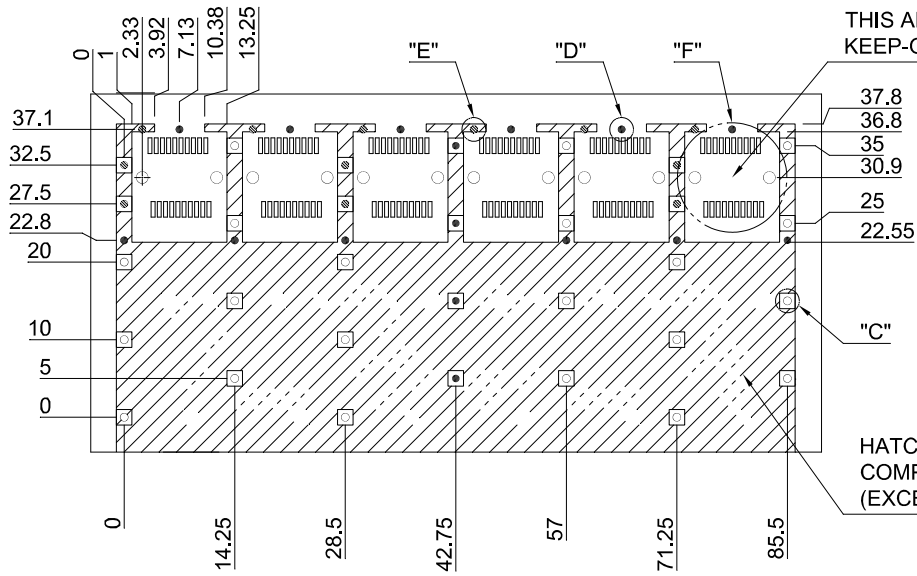


DETAIL B
SCALE 4:1

MATERIAL
 CAGE: NICKEL SILVER
 EMI GASKET FLANGE: NICKEL SILVER
 EMI GASKET: CONDUCTIVE ELASTOMER



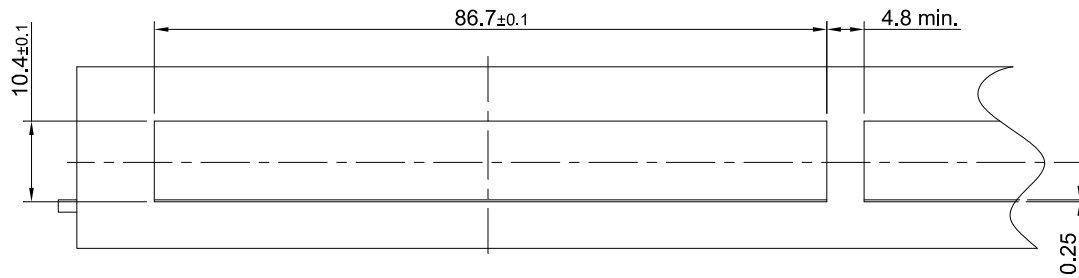
	TITLE: SFP+ EMI Shielded 1X6 Cage Assembly w/ Elastic Gasket			SHEET: 1/2		REV. B
	DWG#: R-SH-008120-6-F-09			CHECKED: Gary Kang		
	UNIT: mm	SCALE: A4 1:1	FINISH:	APPROVED: George Yang		
	TOLERANCE: $X \pm 0.25$. $X \pm 0.20$. $XX \pm 0.15$		MATERIAL: RoHS Compliant	DATE: 03/07/2016		
THIRD ANGLE PROJECTION Angle: $\pm 1^\circ$			DRAWN: Ting			



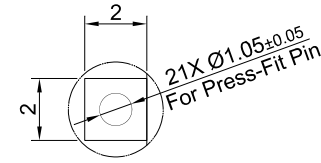
THIS AREA DENOTES COMPONENT KEEP-OUT (TRACES ALLOWED)

HATCHED AREA DENOTES COMPONENTS AND TRACE KEEP-OUT (EXCEPT CHASSIS GROUND)

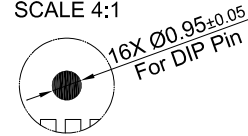
RECOMMENDED PCB LAYOUT
TOLERANCE: ± 0.05



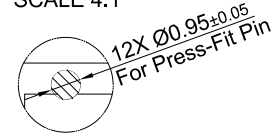
RECOMMENDED BEZEL CUT-OUT



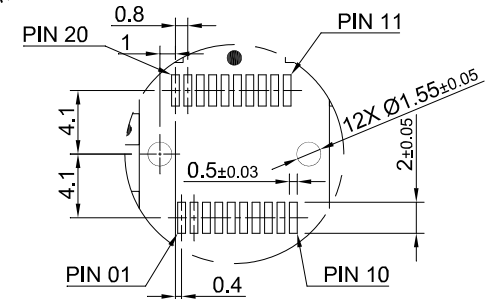
DETAIL C
SCALE 4:1



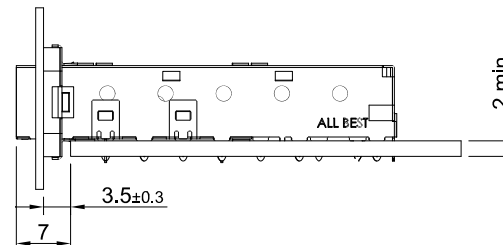
DETAIL D
SCALE 4:1



DETAIL E
SCALE 4:1



DETAIL F
SCALE 2:1



	TITLE: SFP+ EMI Shielded 1X6 Cage Assembly w/ Elastic Gasket		SHEET: 2/2	REV. B
	DWG#: R-SH-008120-6-F-09		CHECKED: Gary Kang	
	UNIT: mm	SCALE: A4 1:1	APPROVED: George Yang	
	TOLERANCE: $X \pm 0.25$, $.X \pm 0.20$, $.XX \pm 0.15$		MATERIAL: RoHS Compliant	DATE: 03/07/2016
THIRD ANGLE PROJECTION Angle: $\pm 1^\circ$		DRAWN: Ting		