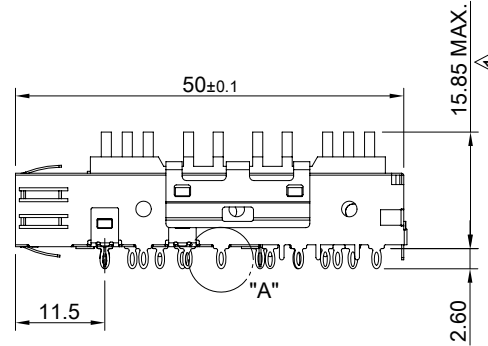
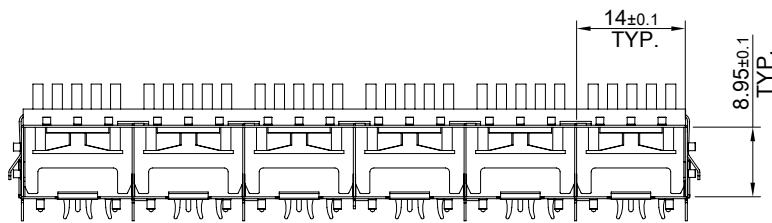
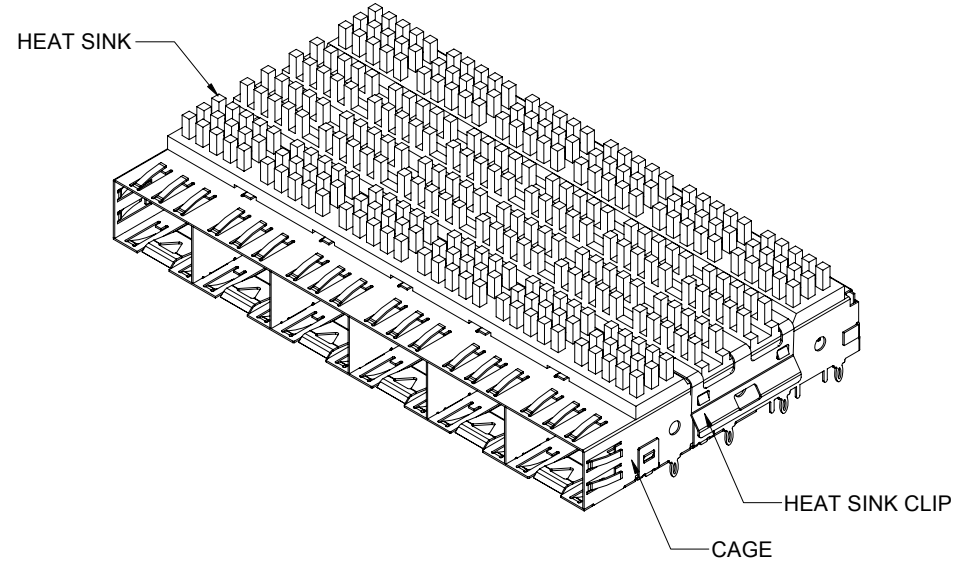


DETAIL A
SCALE 2:1



MATERIAL
CAGE: NICKEL SILVER
HEAT SINK: ALUMINUM
HEAT SINK CLIP: STAINLESS STEEL

FINISH
HEAT SINK: ANODE PROCESS

NOTE
▲ DIMENSION APPLIES WITH MODULE INSERTED IN CAGE



TITLE: SFP+ 1X6 Cage Assembly With Heat Sink 6.3mm Tall

DWG#: R-SH-008120-6-K-02

SHEET: 1/2
REV. B

UNIT: mm
SCALE: A4 1:1

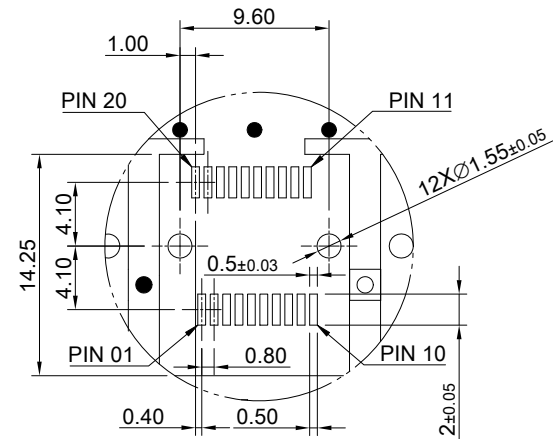
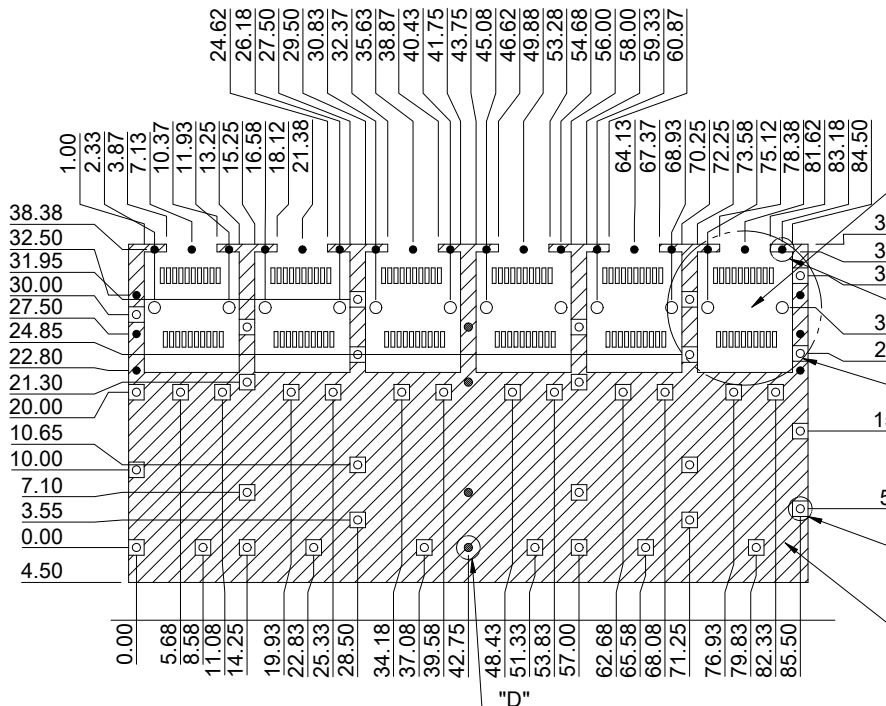
FINISH: CHECKED: Gary Kang

THIRD ANGLE PROJECTION

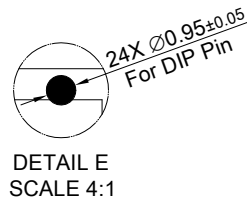
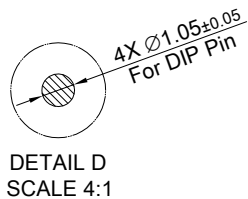
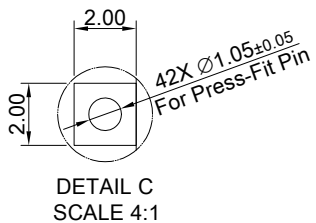
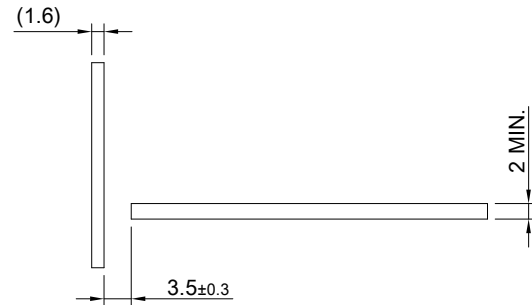
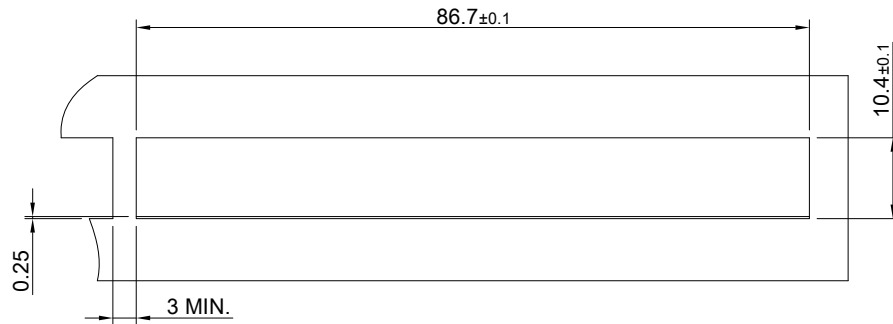
MATERIAL: RoHS Compliant
APPROVED: George Yang

TOLERANCE: Angle: ± 1°
X ± 0.25 .X ± 0.20 .XX ± 0.15

DRAWN: Jun
DATE: 09/01/2020



RECOMMENDED PCB LAYOUT
TOLERANCE: ±0.05



TITLE: SFP+ 1X6 Cage Assembly With Heat Sink 6.3mm Tall			
DWG#: R-SH-008120-6-K-02		SHEET: 2/2	REV. B
UNIT: mm	SCALE: A4 1:1	FINISH:	CHECKED: Gary Kang
THIRD ANGLE PROJECTION		MATERIAL: RoHS Compliant	APPROVED: George Yang
TOLERANCE: Angle: ±1° X ± 0.15 .X ± 0.10 .XX ± 0.05		DRAWN: Jun	DATE: 09/01/2020