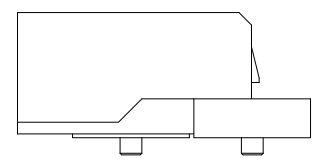
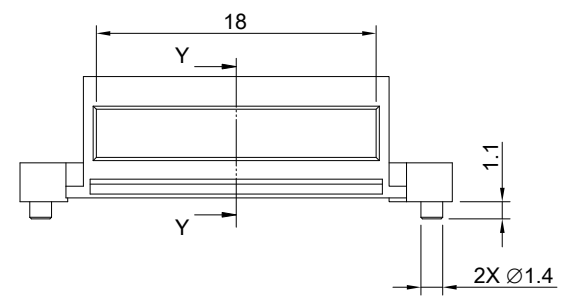
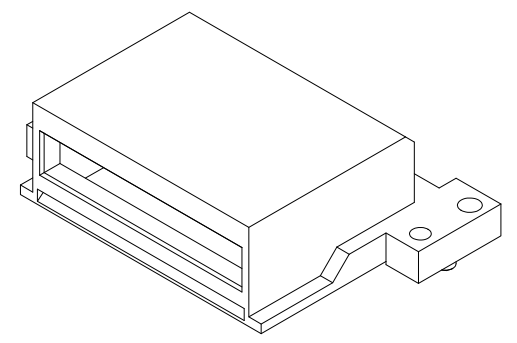


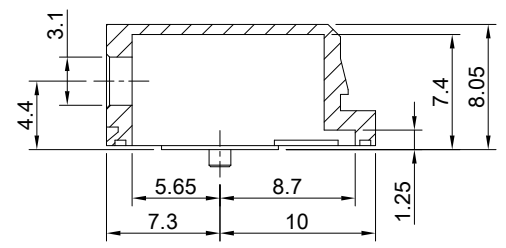
SCALE Z-Z



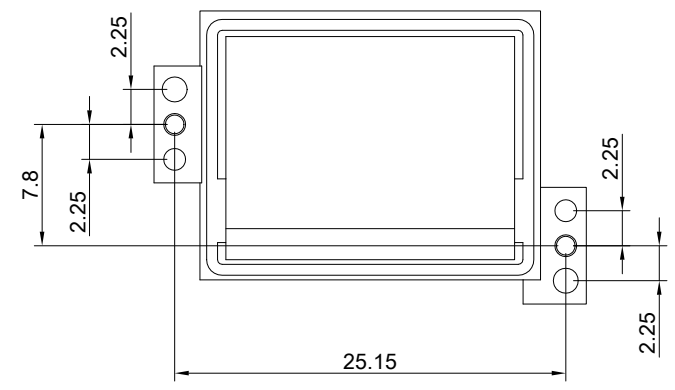
MATERIAL
CONNECTOR COVER: ZINC ALLOY


FINISH
CONNECTOR COVER: NICKEL PLATED

NOTE
TWO MOUNTING SCREWS ARE USED WITH A CONNECTOR COVER AND PURCHASED SEPARATELY. (P/N: H-SW-CF6-4B00)
SCREWS TIGHTENING TORQUE : 0.591 ~ 1.06 Kgf-cm



SCALE Y-Y



 <p>ALL BEST ELECTRONICS CO., LTD.</p>	TITLE: CFP4 1X1 Connector Cover			SHEET: 1/1	REV. B
	DWG#: H-CO-CF6-2B04		CHECKED: Gary Kang		
	UNIT: mm	SCALE: A4 2:1	FINISH:	APPROVED: George Yang	
	TOLERANCE: Angle: ± 1° X: ± 0.25 .X ± 0.20 .XX ± 0.15		MATERIAL: RoHS, HF Compliant	DATE: 07/13/2023	
		THIRD ANGLE PROJECTION	DRAWN: Joe		