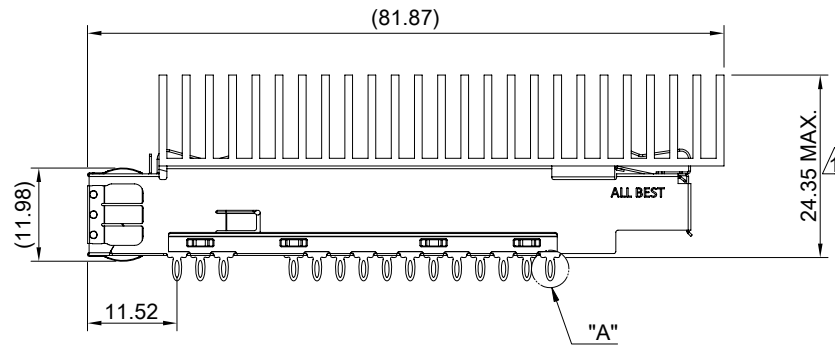
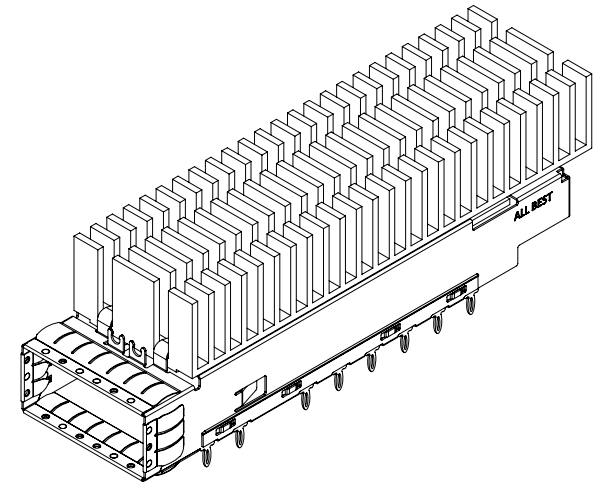


DETAIL A
SCALE 4:1



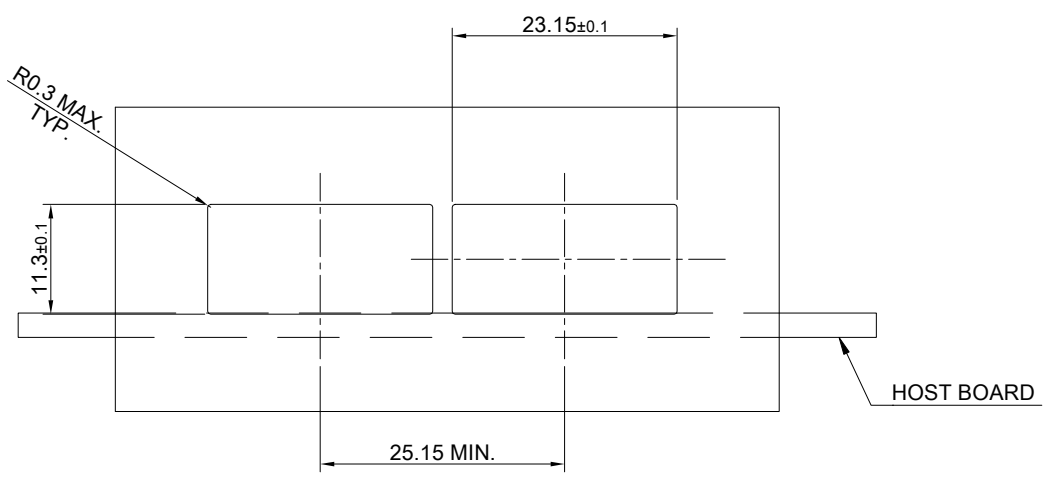
MATERIAL
 CAGE: NICKEL SILVER
 EMI SPRING: STAINLESS STEEL
 HEAT SINK: ALUMINUM
 HEAT SINK CLIP: STAINLESS STEEL

FINISH
 HEAT SINK: ANODE PROCESS

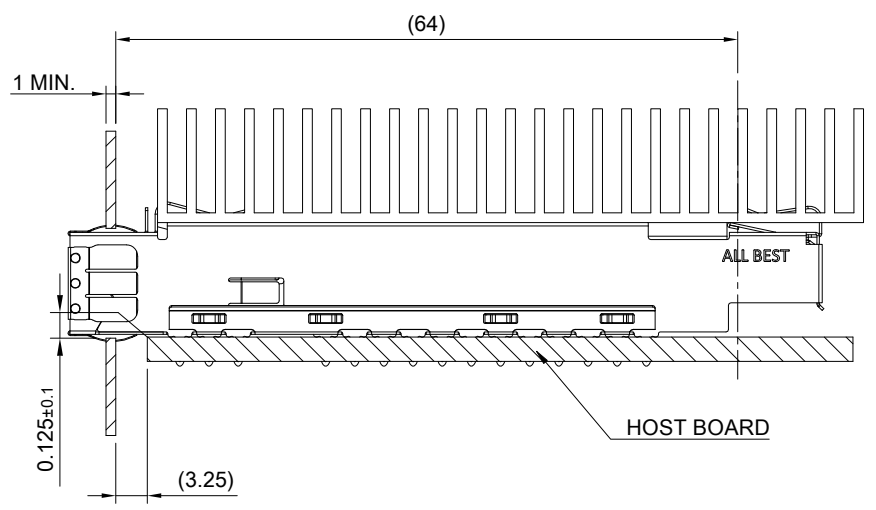
NOTE
 1.) A CONNECTOR COVER IS USED WITH A CAGE AND PURCHASED SEPARATELY. (P/N: H-CO-CF6-2B04)
 2.) Δ DIMENSION APPLIES WITH MODULE INSERTED IN CAGE




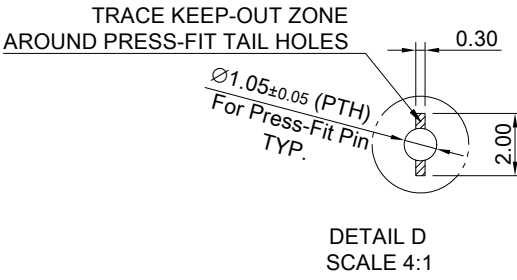
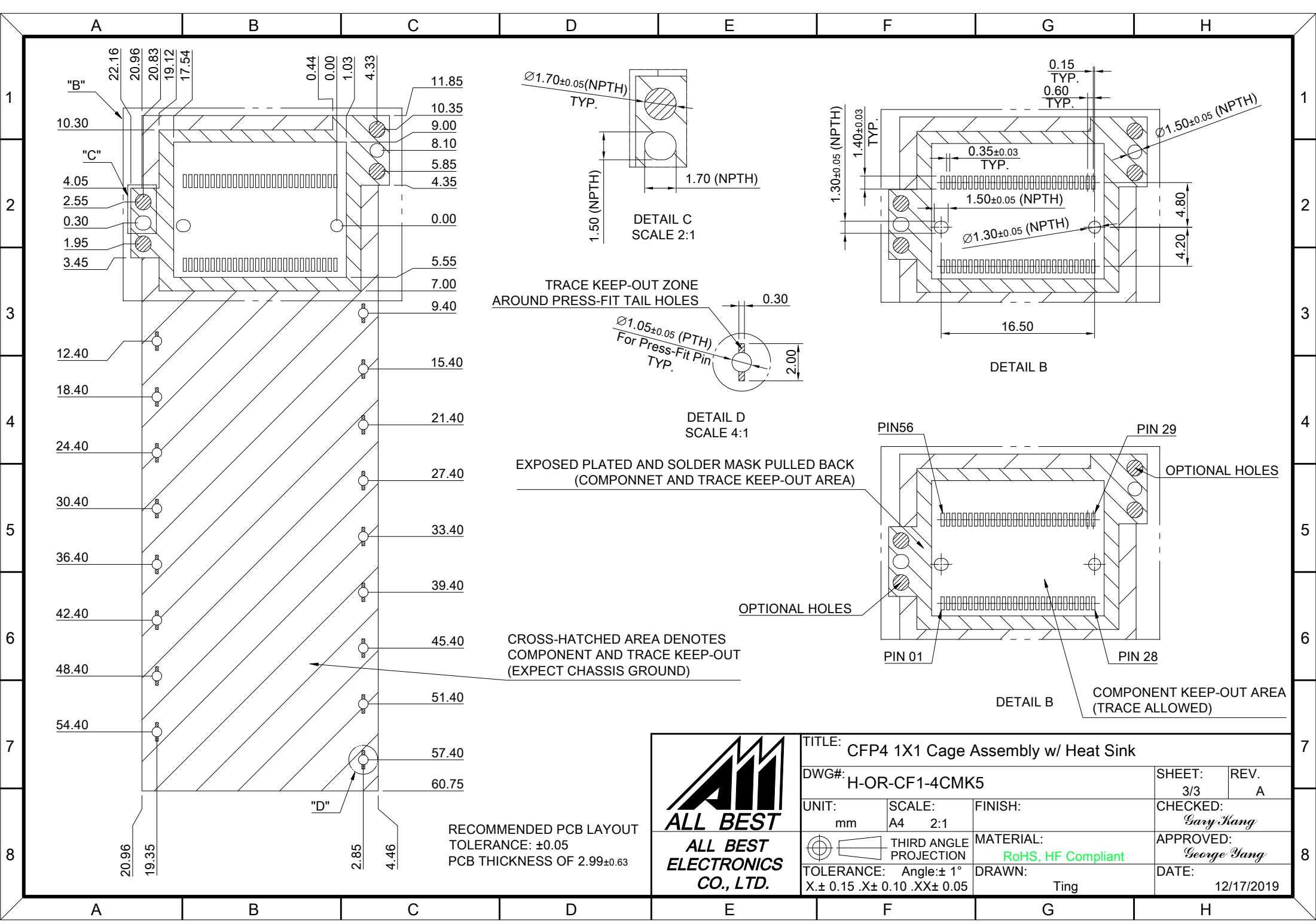
TITLE: CFP4 1X1 Cage Assembly w/ Heat Sink			
DWG#: H-OR-CF1-4CMK5		SHEET: 1/3	REV. A
UNIT: mm	SCALE: A4 1:1	FINISH:	CHECKED: Gary Kang
TOLERANCE: Angle: $\pm 1^\circ$ X: ± 0.25 .X: ± 0.20 .XX: ± 0.15		MATERIAL: RoHS, HF Compliant	APPROVED: George Yang
THIRD ANGLE PROJECTION		DRAWN: Ting	DATE: 12/17/2019



RECOMMENDED BEZEL CUT-OUT



 ALL BEST ALL BEST ELECTRONICS CO., LTD.	TITLE: CFP4 1X1 Cage Assembly w/ Heat Sink			SHEET: 2/3 REV. A	
	DWG#: H-OR-CF1-4CMK5			CHECKED: Gary Kang	
	UNIT: mm	SCALE: A4 5:4	FINISH:	APPROVED: George Yang	
	TOLERANCE: Angle: ± 1° X: ± 0.15 .X: ± 0.10 .XX: ± 0.05		MATERIAL: RoHS, HF Compliant	DATE: 12/17/2019	
			THIRD ANGLE PROJECTION	DRAWN: Ting	



EXPOSED PLATED AND SOLDER MASK PULLED BACK
(COMPONENT AND TRACE KEEP-OUT AREA)

CROSS-HATCHED AREA DENOTES
COMPONENT AND TRACE KEEP-OUT
(EXPECT CHASSIS GROUND)

DETAIL B
COMPONENT KEEP-OUT AREA
(TRACE ALLOWED)

<p>ALL BEST ELECTRONICS CO., LTD.</p>		TITLE: CFP4 1X1 Cage Assembly w/ Heat Sink	
		DWG#: H-OR-CF1-4CMK5	SHEET: 3/3 REV. A
UNIT: mm	SCALE: A4 2:1	FINISH:	CHECKED: Gary Kang
<p>THIRD ANGLE PROJECTION</p>		MATERIAL: RoHS, HF Compliant	APPROVED: George Yang
TOLERANCE: Angle: ± 1° X ± 0.15 .X ± 0.10 .XX ± 0.05		DRAWN: Ting	DATE: 12/17/2019

RECOMMENDED PCB LAYOUT
TOLERANCE: ±0.05
PCB THICKNESS OF 2.99±0.63