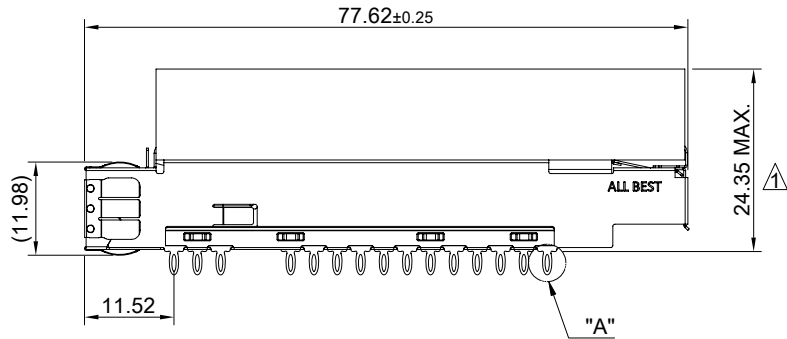
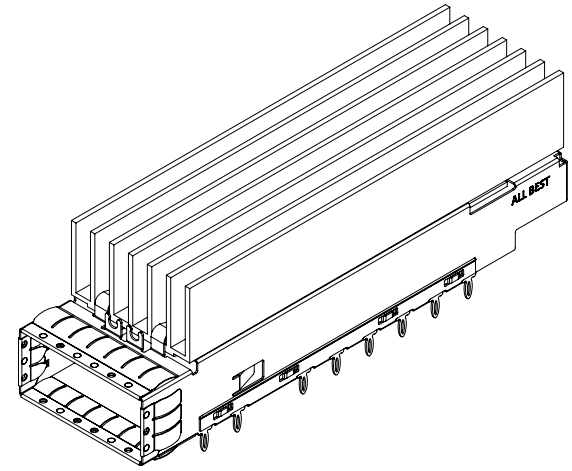


DETAIL A
SCALE 4:1



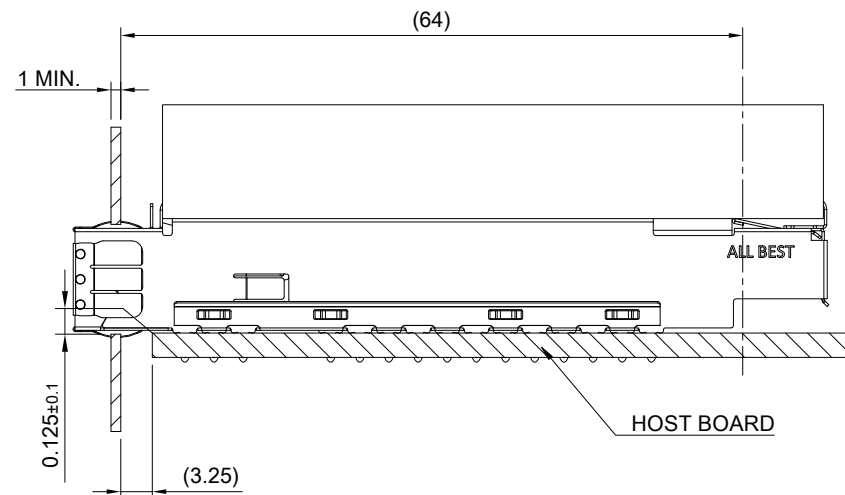
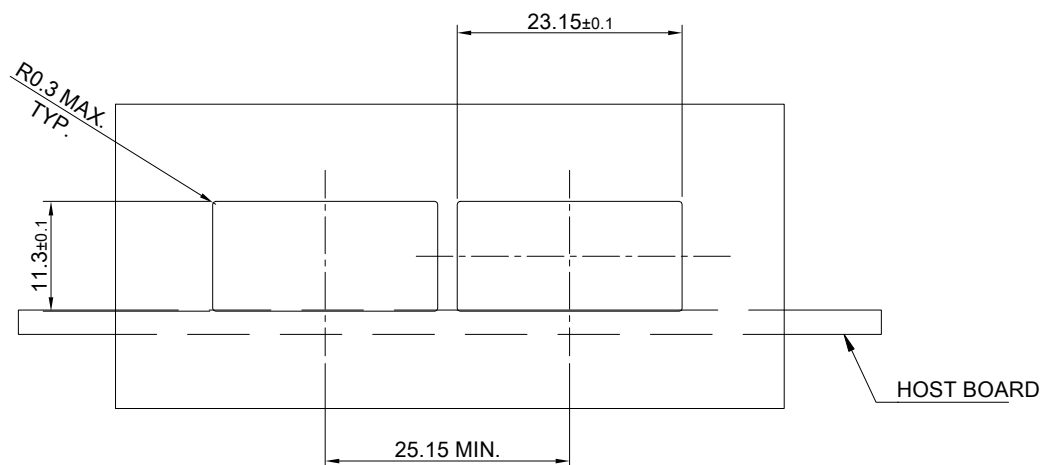
MATERIAL
 CAGE: NICKEL SILVER
 EMI SPRING: STAINLESS STEEL
 HEAT SINK: ALUMINUM
 HEAT SINK CLIP: STAINLESS STEEL

FINISH
 HEAT SINK: ANODE PROCESS (Black)


NOTE
 1.) A CONNECTOR COVER IS USED WITH A CAGE AND PURCHASED SEPARATELY. (P/N: H-CO-CF6-2B04)
 2.) \triangle DIMENSION APPLIES WITH MODULE INSERTED IN CAGE

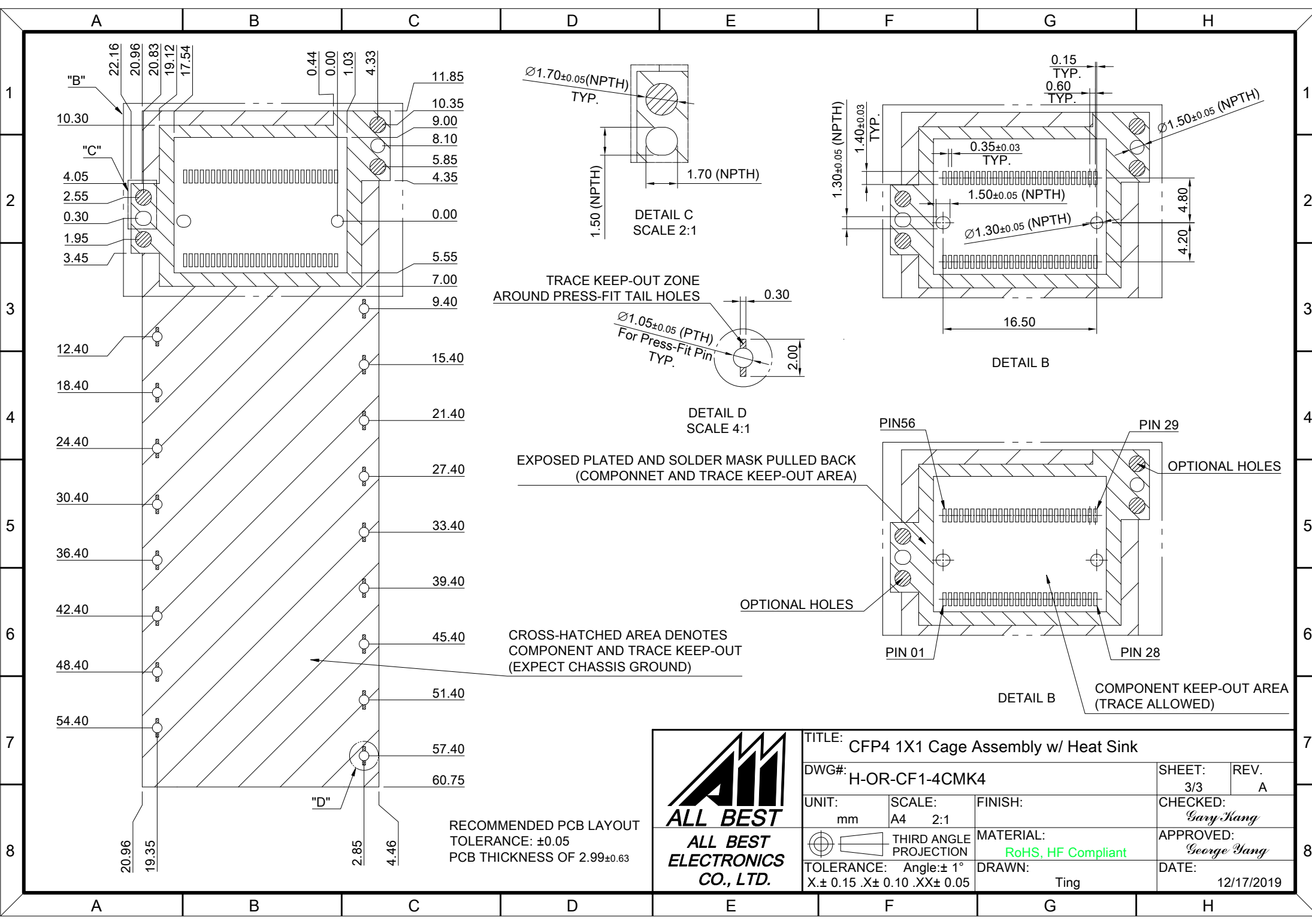


TITLE: CFP4 1X1 Cage Assembly w/ Heat Sink		SHEET: 1/3	REV. A
DWG#: H-OR-CF1-4CMK4		CHECKED: Gary Kang	
UNIT: mm	SCALE: A4 1:1	APPROVED: George Yang	
THIRD ANGLE PROJECTION		DATE: 12/17/2019	
TOLERANCE: Angle: ± 1° X.± 0.25 .X± 0.20 .XX± 0.15		DRAWN: Ting	



RECOMMENDED BEZEL CUT-OUT

 ALL BEST ALL BEST ELECTRONICS CO., LTD.	TITLE: CFP4 1X1 Cage Assembly w/ Heat Sink			SHEET: 2/3		REV. A	
	DWG#: H-OR-CF1-4CMK4			CHECKED: Gary Kang		APPROVED: George Yang	
	UNIT: mm	SCALE: A4 5:4	FINISH:	MATERIAL: RoHS, HF Compliant		DATE: 12/17/2019	
	TOLERANCE: Angle: ± 1° X: ± 0.15 .X: ± 0.10 .XX: ± 0.05		THIRD ANGLE PROJECTION	DRAWN: Ting			



RECOMMENDED PCB LAYOUT
 TOLERANCE: ± 0.05
 PCB THICKNESS OF 2.99 ± 0.03



TITLE: CFP4 1X1 Cage Assembly w/ Heat Sink			
DWG#: H-OR-CF1-4CMK4		SHEET: 3/3	REV. A
UNIT: mm	SCALE: A4 2:1	CHECKED: Gary Kang	
THIRD ANGLE PROJECTION		APPROVED: George Yang	
TOLERANCE: Angle: $\pm 1^\circ$ X: ± 0.15 .X: ± 0.10 .XX: ± 0.05		MATERIAL: RoHS, HF Compliant	DATE: 12/17/2019
		DRAWN: Ting	