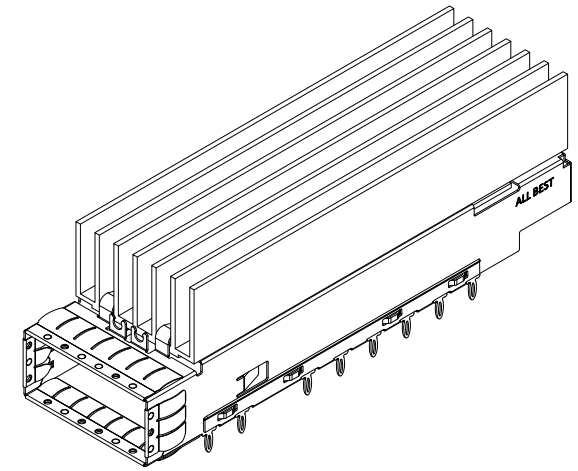
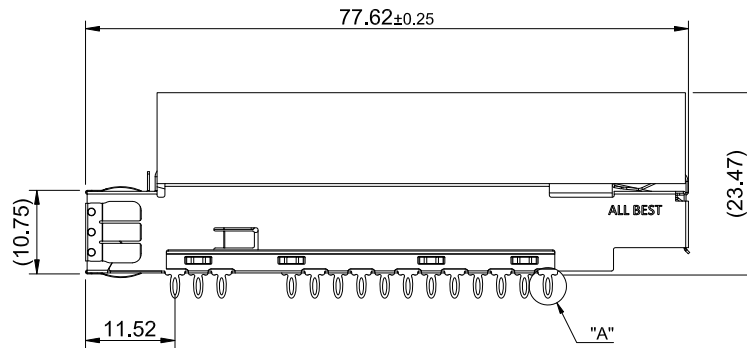


DETAIL A
SCALE 4:1

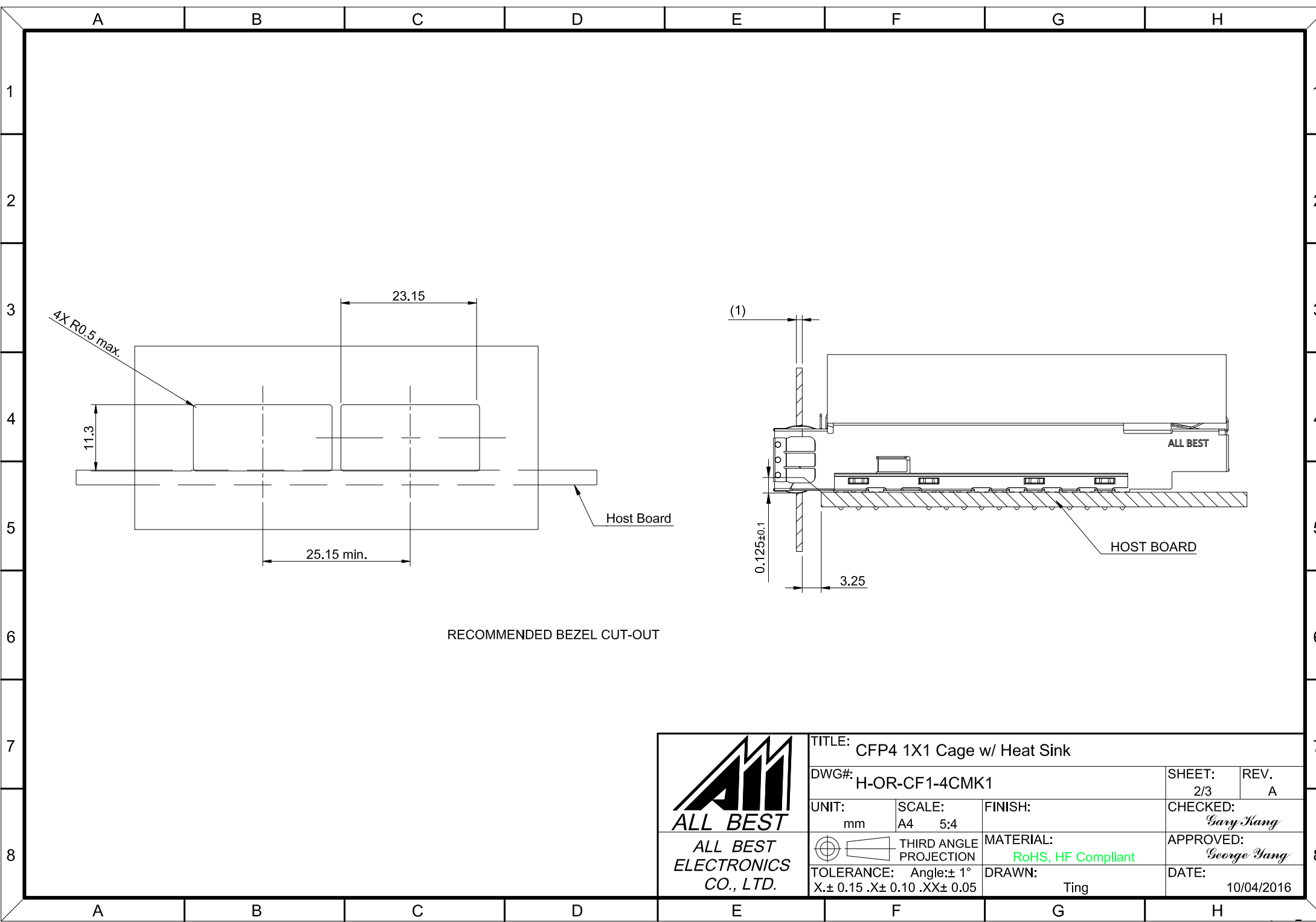


MATERIAL
 CAGE: NICKEL SILVER
 HEAT SINK: ALUMINUM
 HEAT SINK CLIP: STAINLESS STEEL
 EMI SPRING: STAINLESS STEEL


FINISH
 HEAT SINK: ANODE PROCESS



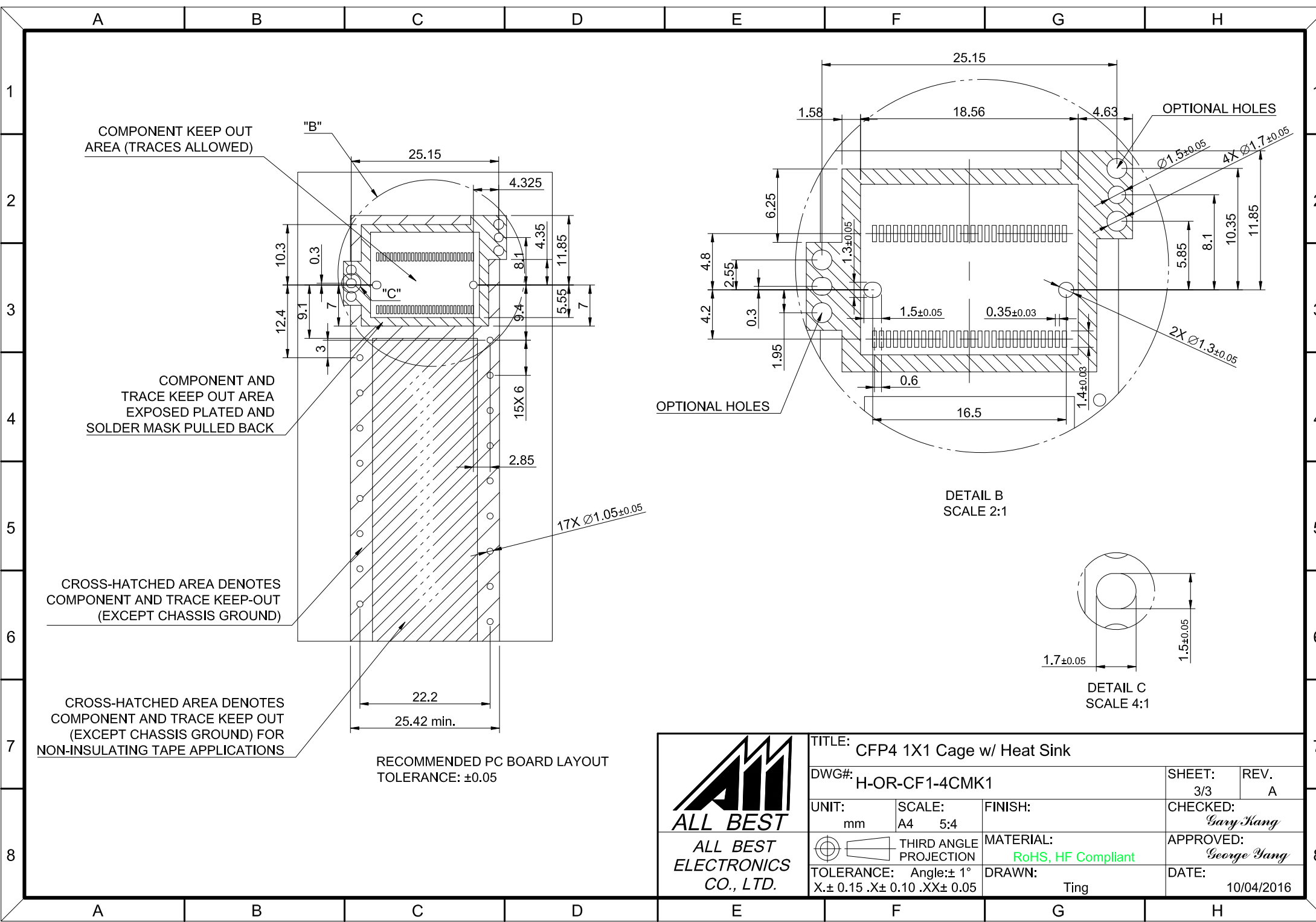
TITLE: CFP4 1X1 Cage w/ Heat Sink			
DWG#: H-OR-CF1-4CMK1		SHEET: 1/3	REV. A
UNIT: mm	SCALE: A4 1:1	CHECKED: Gary Hwang	
THIRD ANGLE PROJECTION		APPROVED: George Yang	
TOLERANCE: Angle: ± 1° X, ± 0.25 .X ± 0.20 .XX ± 0.15		DRAWN: Ting	DATE: 10/04/2016



RECOMMENDED BEZEL CUT-OUT

	TITLE: CFP4 1X1 Cage w/ Heat Sink		
	DWG#: H-OR-CF1-4CMK1		SHEET: 2/3
	UNIT: mm	SCALE: A4 5:4	FINISH:
	TOLERANCE: Angle: ± 1° X: ± 0.15 .X: ± 0.10 .XX: ± 0.05		MATERIAL: RoHS, HF Compliant
THIRD ANGLE PROJECTION		DRAWN: Ting	APPROVED: George Yang
		DATE: 10/04/2016	

REV. A
CHECKED: Gary Yang
DATE: 10/04/2016



COMPONENT KEEP OUT AREA (TRACES ALLOWED)

COMPONENT AND TRACE KEEP OUT AREA EXPOSED PLATED AND SOLDER MASK PULLED BACK

CROSS-HATCHED AREA DENOTES COMPONENT AND TRACE KEEP-OUT (EXCEPT CHASSIS GROUND)

CROSS-HATCHED AREA DENOTES COMPONENT AND TRACE KEEP OUT (EXCEPT CHASSIS GROUND) FOR NON-INSULATING TAPE APPLICATIONS

RECOMMENDED PC BOARD LAYOUT TOLERANCE: ±0.05

DETAIL B SCALE 2:1

DETAIL C SCALE 4:1



TITLE: CFP4 1X1 Cage w/ Heat Sink			
DWG#: H-OR-CF1-4CMK1		SHEET: 3/3	REV. A
UNIT: mm	SCALE: A4 5:4	CHECKED: Gary Yang	
TOLERANCE: Angle: ±1° X.± 0.15 .X± 0.10 .XX± 0.05		MATERIAL: RoHS, HF Compliant	APPROVED: George Yang
DRAWN: Ting		DATE: 10/04/2016	