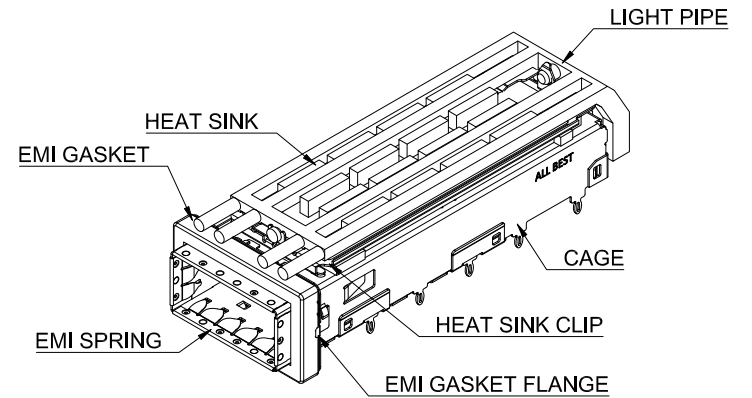
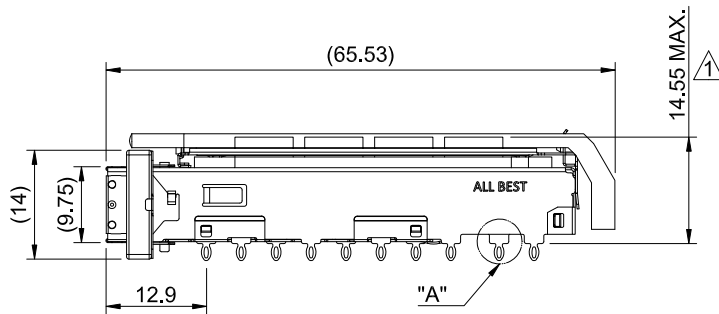


DETAIL A
SCALE 5:1



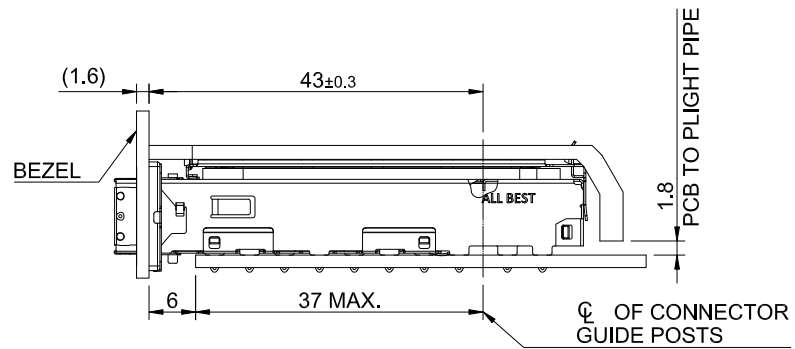
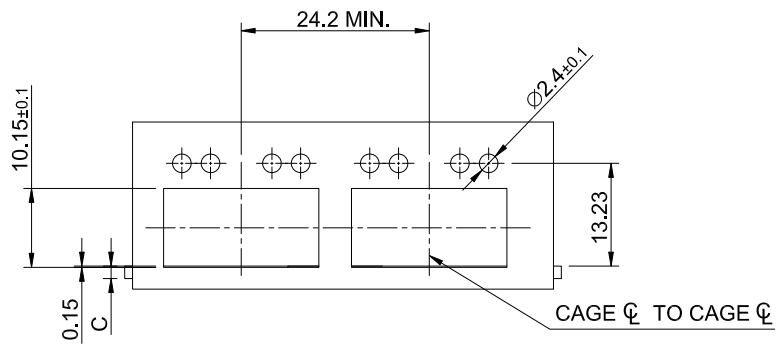
MATERIAL
 CAGE: NICKEL SILVER
 HEAT SINK: ALUMINUM
 HEAT SINK CLIP: STAINLESS STEEL
 EMI SPRING: STAINLESS STEEL
 LIGHT PIPE: PC
 EMI GASKET: CONDUCTIVE ELASTOMER
 EMI GASKET FLANGE: STAINLESS STEEL

FINISH
 HEAT SINK: ANODE PROCESS

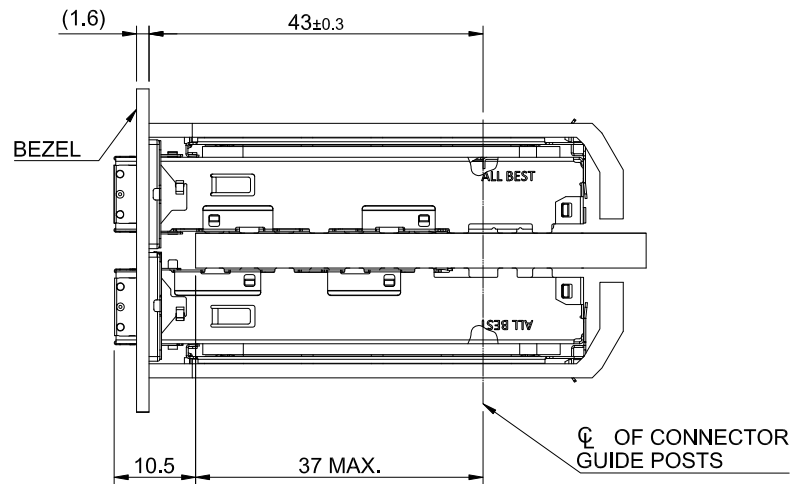
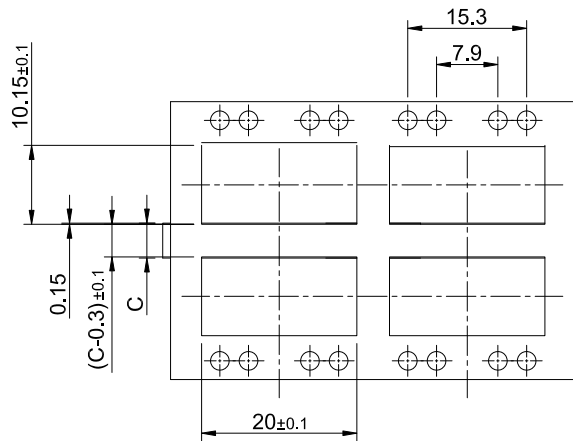
NOTE
 ▲ DIMENSION APPLIES WITH MODULE INSERTED IN CAGE



TITLE: QSFP28 1X1 Cage Assembly w/ Light Pipe & Heat Sink (PCI)			
DWG#: R-OR-ZQ1-4CGEG-MK		SHEET: 1/4	REV. A
UNIT: mm	SCALE: A4 1:1	CHECKED: Gary Kang	
TOLERANCE: X.± 0.25 .X± 0.20 .XX± 0.15		MATERIAL: RoHS Compliant	APPROVED: George Yang
THIRD ANGLE PROJECTION		DRAWN: Kilin	DATE: 02/20/2019



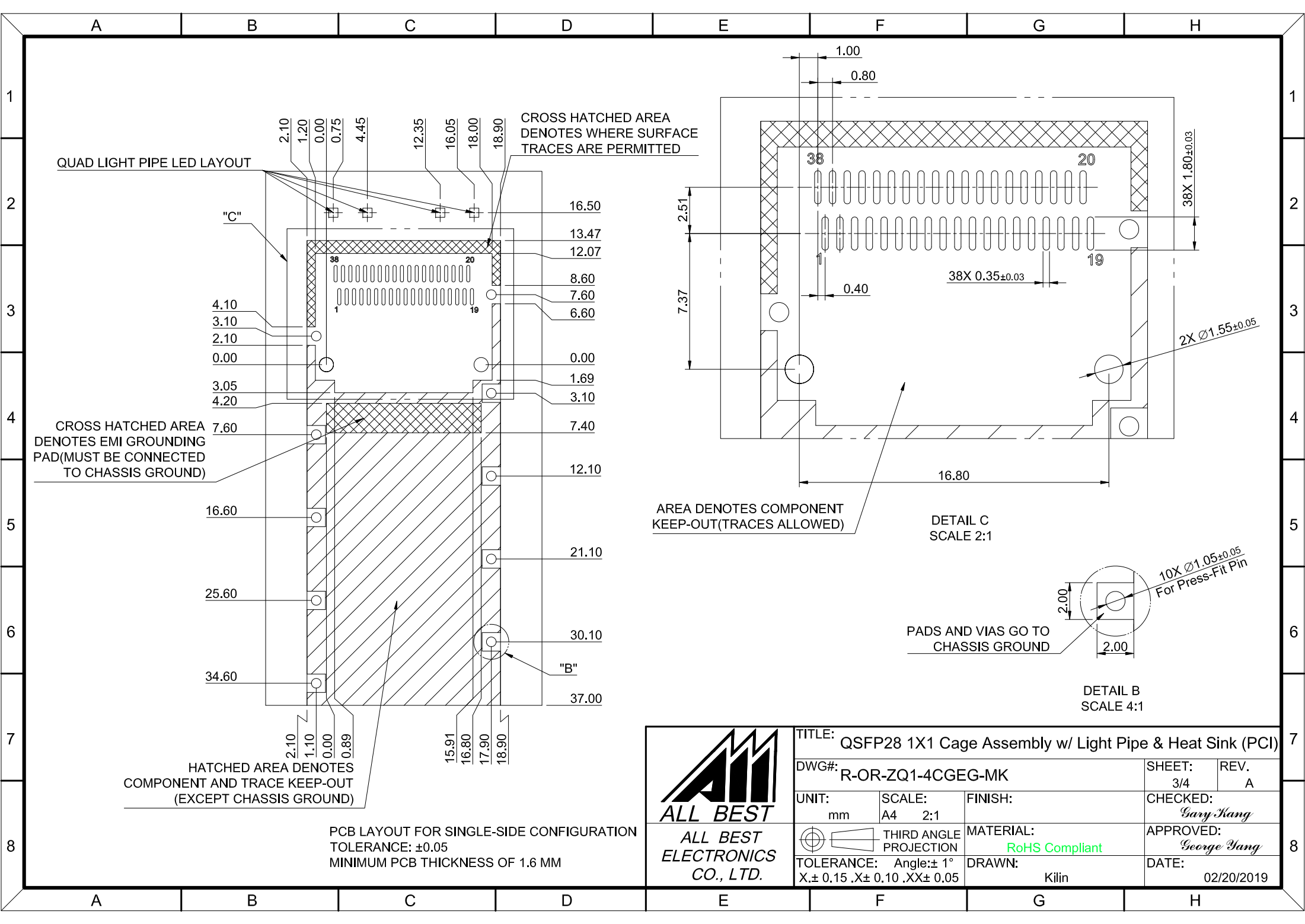
SINGLE-SIDE CONFIGURATION



BELLY TO BELLY CONFIGURATION

C = THICKNESS OF PC BOARD
 SINGLE-SIDE = 1.6MM (MIN.)
 BELLY TO BELLY = 4.5MM (MIN.)

	TITLE: QSFP28 1X1 Cage Assembly w/ Light Pipe & Heat Sink (PCI)		SHEET: 2/4	REV. A
	DWG#: R-OR-ZQ1-4CGEG-MK		CHECKED: Gary Kang	
	UNIT: mm	SCALE: A4 1:1	MATERIAL: RoHS Compliant	APPROVED: George Yang
	TOLERANCE: X± 0.15 .X± 0.10 .XX± 0.05		DRAWN: Kilin	DATE: 02/20/2019
THIRD ANGLE PROJECTION				



QUAD LIGHT PIPE LED LAYOUT

CROSS HATCHED AREA DENOTES WHERE SURFACE TRACES ARE PERMITTED

CROSS HATCHED AREA DENOTES EMI GROUNDING PAD (MUST BE CONNECTED TO CHASSIS GROUND)

HATCHED AREA DENOTES COMPONENT AND TRACE KEEP-OUT (EXCEPT CHASSIS GROUND)

PCB LAYOUT FOR SINGLE-SIDE CONFIGURATION
TOLERANCE: ±0.05
MINIMUM PCB THICKNESS OF 1.6 MM

AREA DENOTES COMPONENT KEEP-OUT (TRACES ALLOWED)

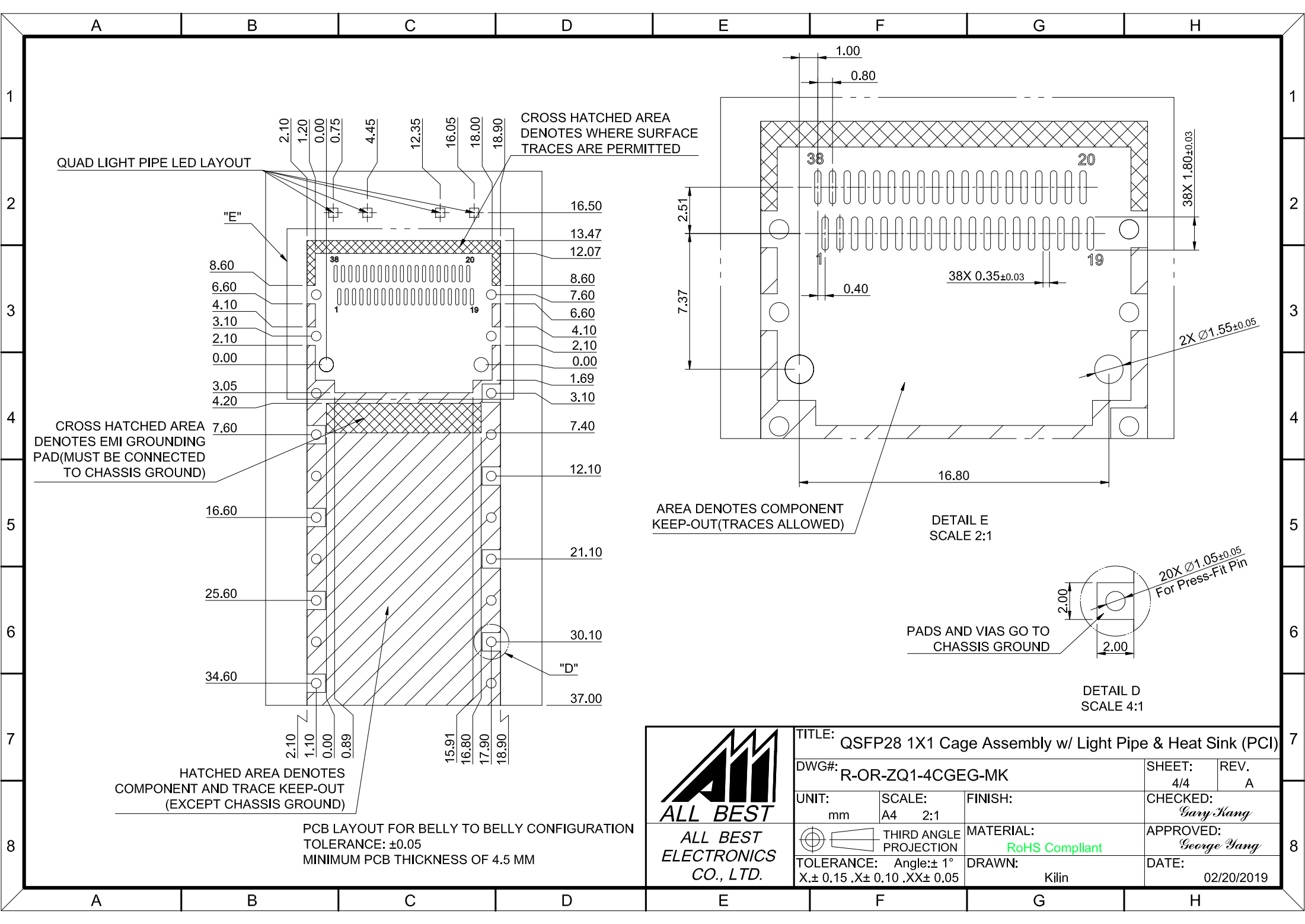
DETAIL C
SCALE 2:1


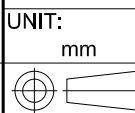
PADS AND VIAS GO TO CHASSIS GROUND

DETAIL B
SCALE 4:1



TITLE: QSFP28 1X1 Cage Assembly w/ Light Pipe & Heat Sink (PCI)			
DWG#: R-OR-ZQ1-4CGEG-MK		SHEET: 3/4	REV: A
UNIT: mm	SCALE: A4 2:1	FINISH:	CHECKED: Gary Yang
THIRD ANGLE PROJECTION		MATERIAL: RoHS Compliant	APPROVED: George Yang
TOLERANCE: X±0.15, .X±0.10, .XX±0.05		DRAWN: Kilin	DATE: 02/20/2019



 ALL BEST ELECTRONICS CO., LTD.	TITLE: QSFP28 1X1 Cage Assembly w/ Light Pipe & Heat Sink (PCI)		SHEET: 4/4	REV. A	
	DWG#: R-OR-ZQ1-4CGEG-MK		CHECKED: Gary Yang		
	UNIT: mm	SCALE: A4 2:1	FINISH:	APPROVED: George Yang	
	 THIRD ANGLE PROJECTION		MATERIAL: RoHS Compliant	DATE: 02/20/2019	
	TOLERANCE: Angle: ± 1° X.± 0.15 .X± 0.10 .XX± 0.05		DRAWN: Kilin		