

**MATERIAL**  
 CONTACTS: COPPER ALLOY  
 INSULATOR: LCP THERMOPLASTIC 94V-0  
 WELD TAB: COPPER ALLOY

**FINISH**  
 CONTACTS: 5µ" MIN. GOLD ON MATING END;  
 MATTE TIN ON SOLDER  
 ALL UNDERPLATED NICKEL  
 WELD TAB: MATTE TIIN

**ELECTRICAL**  
 CONTACT CURRENT RATING: 2 AMPERE  
 VOLTAGE RATING: 275VAC  
 MAX CYCLES: 25

**ENVIRONMENT**  
 OPERATION TEMPERATURE: -55°C TO 125°C  
 SMT TEMPERATURE: 260°C

THIS PRINT IS  
**PRELIMINARY**  
 UNQUALIFIED PRODUCT  
 CONTACT PRODUCT ENGINEERING  
 BEFORE USING THIS PRINT



**TITLE:** COM-HPC 400pin Male Connector w/ Weld Tab

**DWG#:** R-CM-HPC400-8AW1

**SHEET:** 1/3  
**REV.** REF2

**UNIT:** mm  
**SCALE:** A4 5:4

**FINISH:** CHECKED:

**THIRD ANGLE PROJECTION**

**MATERIAL:** APPROVED:

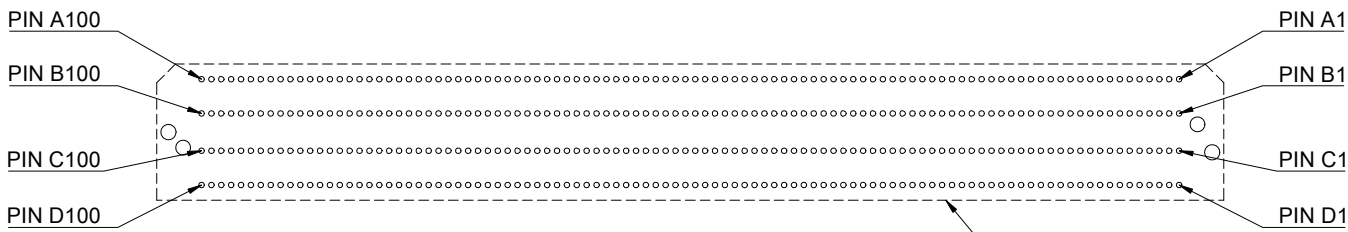
**TOLERANCE:** Angle: ± 1°  
 X: ± 0.25 .X: ± 0.20 .XX: ± 0.15

**DRAWN:** Ting DATE: 03/22/2024

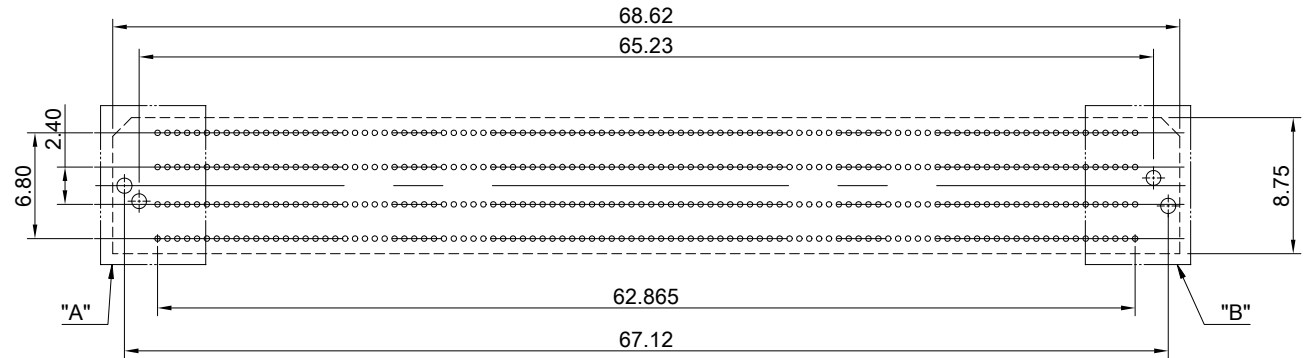
RoHS Compliant

A B C D E F G H

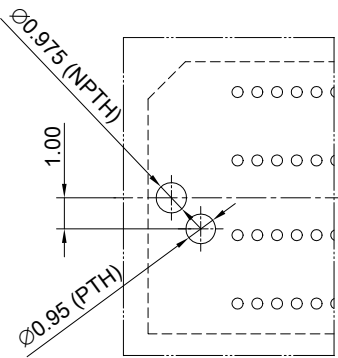
1  
2  
3  
4  
5  
6  
7  
8



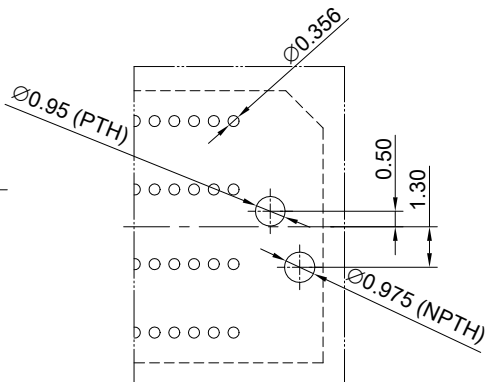
CONNECTOR OUTLINE  
OTHER COMPONENTS ON PCB SHALL  
AVOID THIS ZONE



RECOMMENDED PCB LAYOUT  
TOLERANCE: ±0.05



DETAIL A  
SCALE 2:1



DETAIL B  
SCALE 2:1

THIS PRINT IS  
**PRELIMINARY**  
UNQUALIFIED PRODUCT  
CONTACT PRODUCT ENGINEERING  
BEFORE USING THIS PRINT

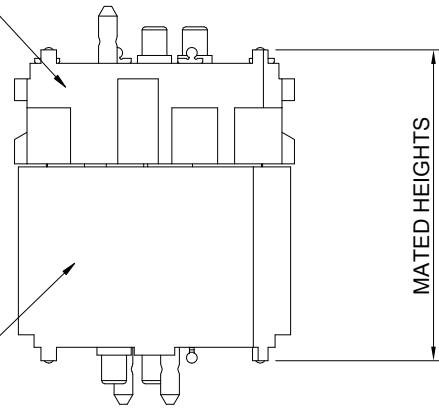


TITLE: COM-HPC 400pin Male Connector w/ Weld Tab			
DWG#: R-CM-HPC400-8AW1		SHEET: 2/3	REV. REF2
UNIT: mm	SCALE: A4 2:1	FINISH:	CHECKED:
THIRD ANGLE PROJECTION		MATERIAL: RoHS Compliant	APPROVED:
TOLERANCE: X± 0.15 .X± 0.10 .XX± 0.05		DRAWN: Ting	DATE: 03/22/2024

A B C D E F G H

FEMALE: R-CF-HPC400-8AW1

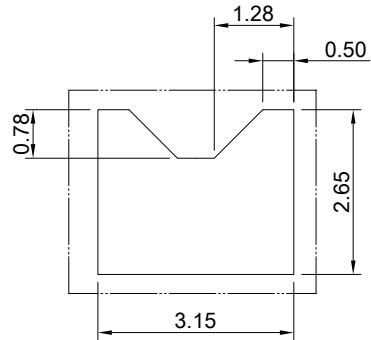
MALE: SEE TYPE



TYPE	MATED HEIGHTS
R-CM-HPC400-8AW1	5mm
R-CM-HPC400-8AW2	10mm

NOTE: Processing conditions will affect mated height.

PROCESSING VIEW  
 DIMENSION INDICATES CONNECTOR/FIXTURE HEIGHT ON PCB  
 TO GUARANTEE ENOUGH REFLOW OVEN WORKING SPACE.  
 DIMENSION, PCB THICKNESS, AND THE HEIGHT OF THE COMPONENTS  
 ON THE OTHER SIDE OF THE BOARD NEED TO BE CONSIDERED.



DETAIL C  
SCALE 2:1



RECOMMENDED STENCIL LAYOUT  
 ALL DIMENSIONS SYMMETRIC ABOUT CENTERLINE  
 STENCIL TO BE 0.125mm THICK

THIS PRINT IS  
**PRELIMINARY**  
 UNQUALIFIED PRODUCT  
 CONTACT PRODUCT ENGINEERING  
 BEFORE USING THIS PRINT



TITLE: COM-HPC 400pin Male Connector w/ Weld Tab

DWG#: R-CM-HPC400-8AW1

SHEET: 3/3  
 REV. REF2

UNIT: mm  
 SCALE: A4 4:1

FINISH: CHECKED:

THIRD ANGLE PROJECTION

MATERIAL: RoHS Compliant

APPROVED:

TOLERANCE: Angle:  $\pm 1^\circ$   
 $X \pm 0.15$  . $X \pm 0.10$  . $XX \pm 0.05$

DRAWN: Ting

DATE: 03/22/2024