

MATERIAL
 HOUSING: LCP THERMOPLASTIC 94V-0 (BLACK)
 CONTACTS: COPPER ALLOY
 HOLD: LCP THERMOPLASTIC 94V-0 (BLACK)

FINISH
 CONTACTS: GOLD ON MATING END
 TIN ON TERMINATION END;
 ALL UNDERPLATED NICKEL

ELECTRICAL CHARACTERISTICS
 CONTACT CURRENT RATING: 1A SIGNAL CONTACTS /
 10A PER SHIELD

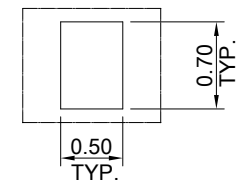
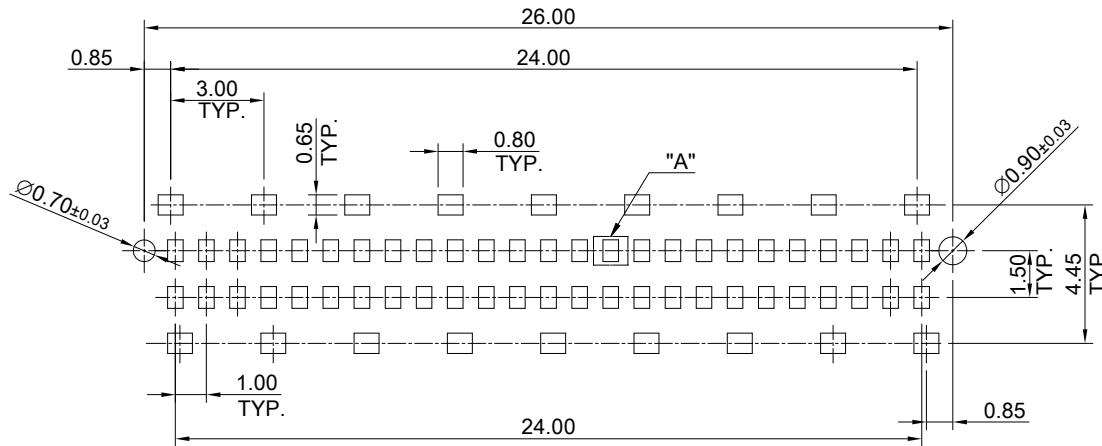
MAX CYCLES: 500

ENVIRONMENT
 OPERATION TEMPERATURE: -55° C TO 125° C
 SMT TEMPERATURE: 260° C

THIS PRINT IS
PRELIMINARY
 UNQUALIFIED PRODUCT
 CONTACT PRODUCT ENGINEERING
 BEFORE USING THIS PRINT



| | | | |
|---|-------------------------|------------------------------------|----------------------------|
| TITLE: Micro Speed 50 Pin Female Connector | | | |
| DWG#: R-MF-10050-8AXX | | SHEET: 1/2 | REV.: REF |
| UNIT: mm | SCALE: A4 2:1 | FINISH: | CHECKED: |
| THIRD ANGLE PROJECTION | | MATERIAL: RoHS Compliant | APPROVED: |
| TOLERANCE: Angle: ± 1° X: ± 0.25 .X: ± 0.20 .XX: ± 0.15 | | DRAWN: Ting | DATE: 02/24/2021 |



DETAIL A
SCALE 4:1

THIS PRINT IS
PRELIMINARY
UNQUALIFIED PRODUCT
CONTACT PRODUCT ENGINEERING
BEFORE USING THIS PRINT



| | | | |
|---|---------------|--------------------------|-----------|
| TITLE: Micro Speed 50 Pin Female Connector | | | |
| DWG#: R-MF-10050-8AXX | | SHEET: 2/2 | REV. REF |
| UNIT: mm | SCALE: A4 4:1 | FINISH: | |
| THIRD ANGLE PROJECTION | | MATERIAL: RoHS Compliant | |
| TOLERANCE: Angle: ± 1° X ± 0.15 .X ± 0.10 .XX ± 0.05 | | DRAWN: Ting | APPROVED: |
| | | DATE: 02/24/2021 | |

1
2
3
4
5
6
7
8

1
2
3
4
5
6
7
8

A B C D E F G H

A B C D E F G H