

MATERIAL
CONTACTS AND HOLE DOWNS: COPPER ALLOY
INSULATOR: LCP THERMOPLASTIC 94V-0

FINISH
CONTACTS: GOLD FLASH ON MATING END;
100µ" MIN. MATTE TIN ON SOLDER FOOT AREA
ALL UNDERPLATED NICKEL

ELECTRICAL CHARACTERISTICS
CONTACT CURRENT RATING: - AMPERE
VOLTAGE RATING: 300 VAC
MAX CYCLES: 100

ENVIRONMENT
OPERATION TEMPERATURE: -55°C TO 125°C
SMT TEMPERATURE: 260°C

THIS PRINT IS
PRELIMINARY
UNQUALIFIED PRODUCT
CONTACT PRODUCT ENGINEERING
BEFORE USING THIS PRINT



TITLE: PCIe-Gen Z 4C 140Pin Straight Connector

DWG#: R-CT-GZA-8AXX

UNIT: mm SCALE: A4 2:1

THIRD ANGLE PROJECTION

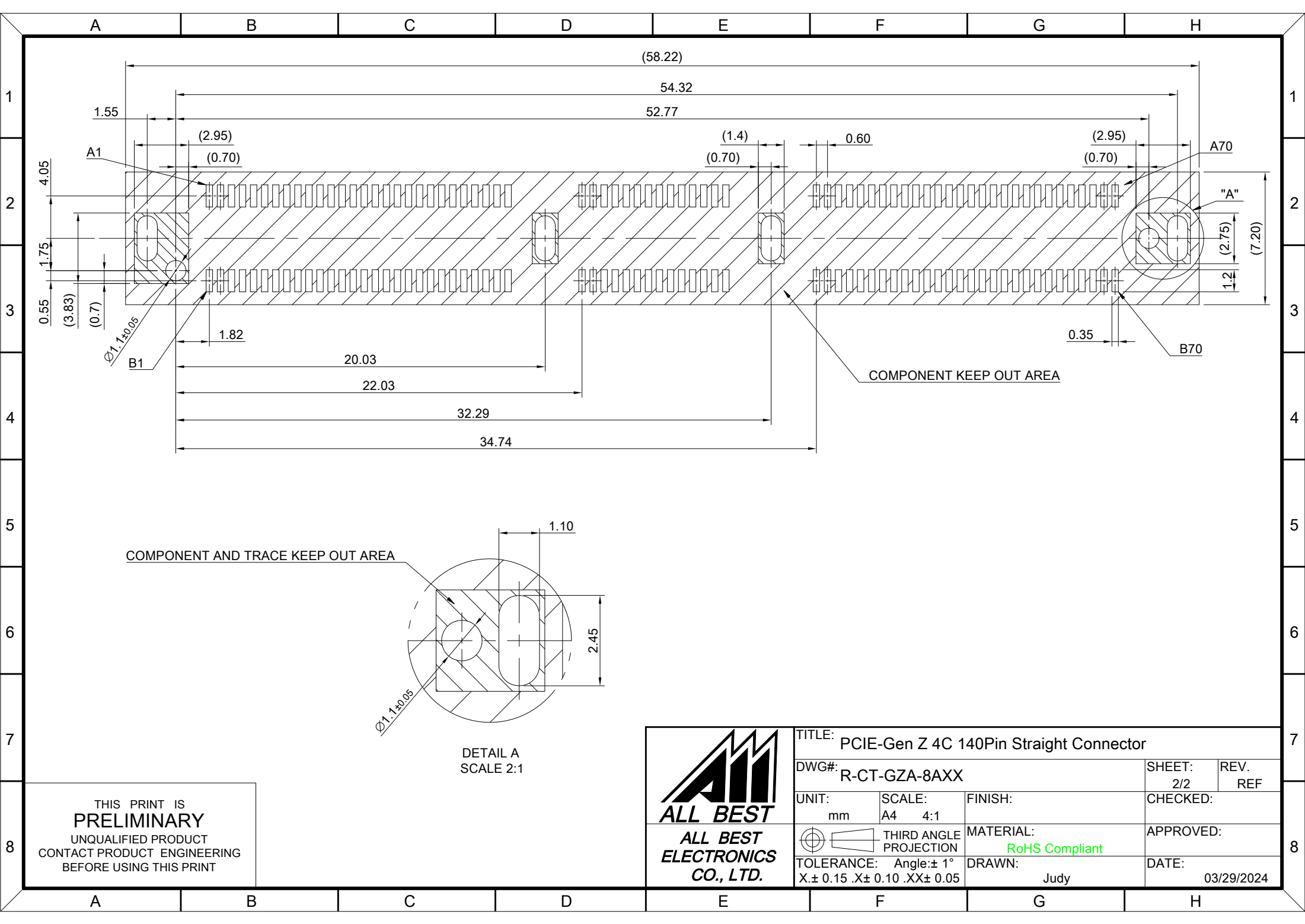
TOLERANCE: Angle: ± 1°
X ± 0.25 .X ± 0.20 .XX ± 0.15

FINISH: MATERIAL: RoHS Compliant

CHECKED: APPROVED:

DRAWN: Judy DATE: 03/29/2024

REV. REF



THIS PRINT IS
PRELIMINARY
 UNQUALIFIED PRODUCT
 CONTACT PRODUCT ENGINEERING
 BEFORE USING THIS PRINT

DETAIL A
 SCALE 2:1



TITLE: PCIe-Gen Z 4C 140Pin Straight Connector			
DWG#: R-CT-GZA-8AXX		SHEET: 2/2	REV. REF
UNIT: mm	SCALE: A4 4:1	FINISH:	CHECKED:
TOLERANCE: Angle: ± 1° X: ± 0.15 .X: ± 0.10 .XX: ± 0.05		MATERIAL: RoHS Compliant	APPROVED:
		DRAWN: Judy	DATE: 03/29/2024