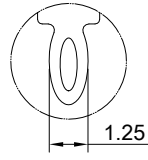
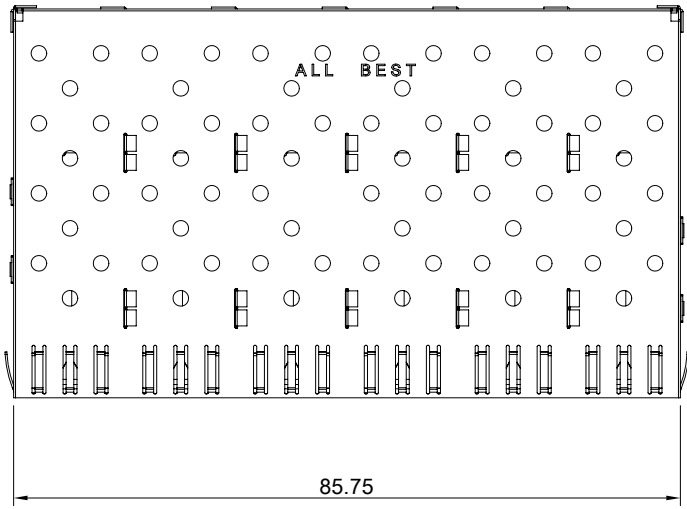
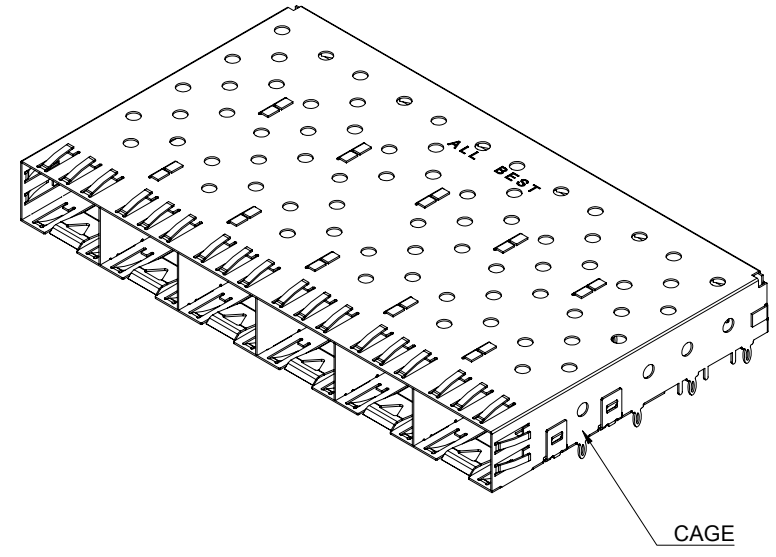


A B C D E F G H

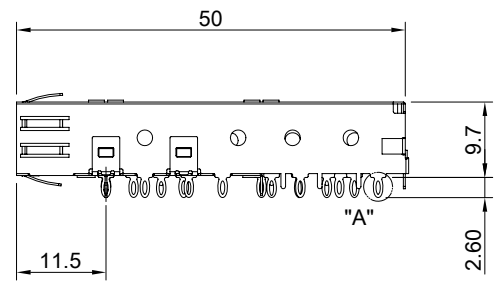
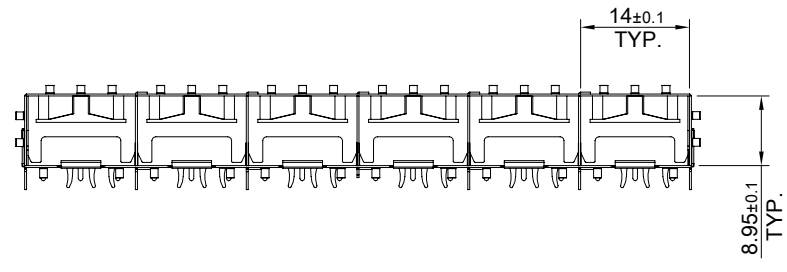
1
2
3
4
5
6
7
8



DETAIL A
SCALE 4:1

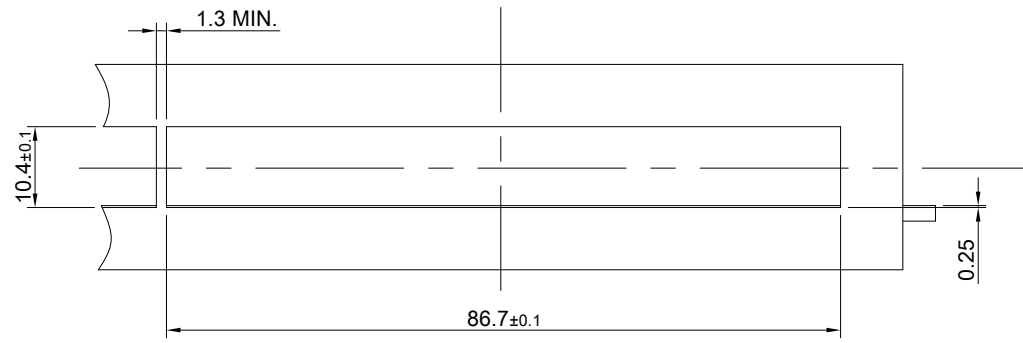


MATERIAL
CAGE: NICKEL SILVER

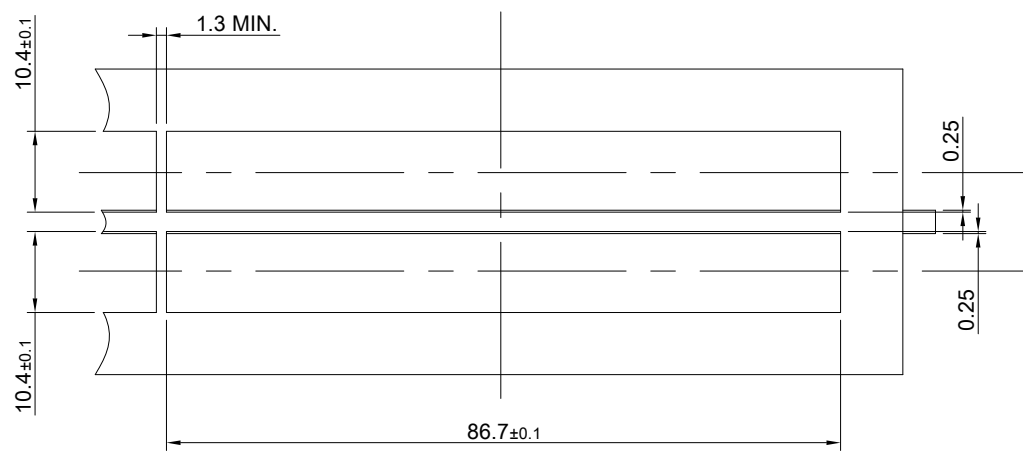


	TITLE: SFP 1X6 Press Fit Cage Assembly			SHEET: 1/4		REV. B
	DWG#: R-SH-008120-6-F			CHECKED: Gary Kang		
	UNIT: mm	SCALE: A4 1:1	FINISH:	APPROVED: George Yang		
	TOLERANCE: X± 0.25 .X± 0.20 .XX± 0.15		THIRD ANGLE PROJECTION	MATERIAL: RoHS Compliant	DATE: 10/14/2019	
			DRAWN: Jun			

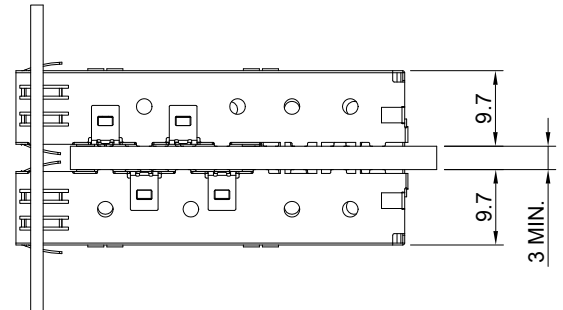
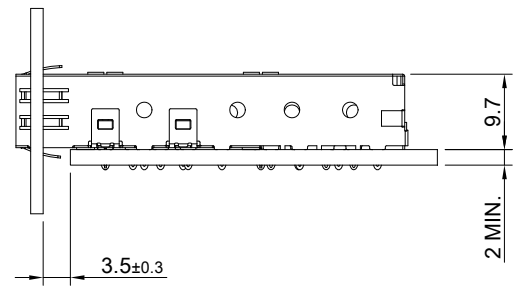
A B C D E F G H



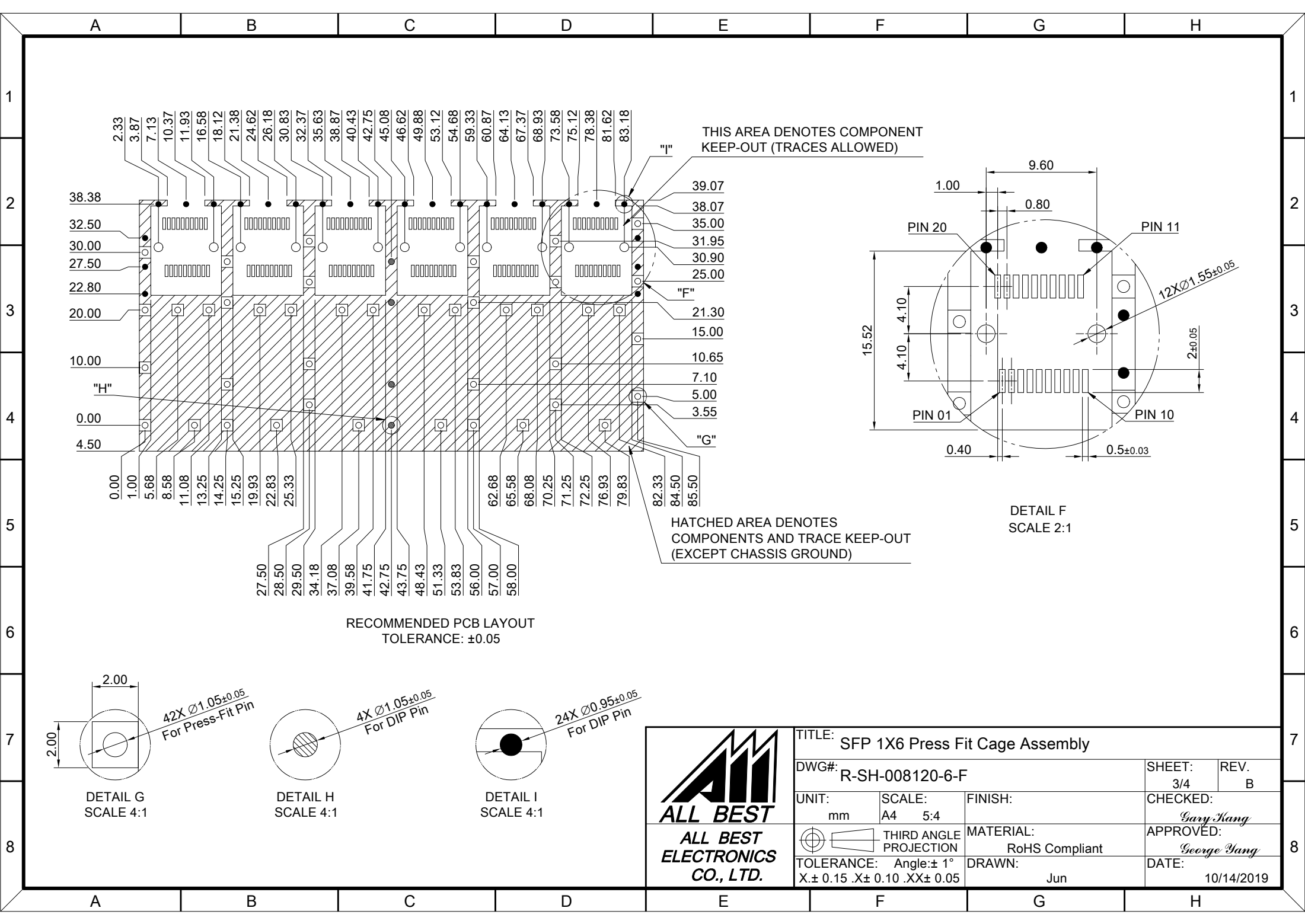
RECOMMENDED BEZEL CUT-OUT



RECOMMENDED BEZEL CUT-OUT FOR BELLY TO BELLY MOUNTING



TITLE: SFP 1X6 Press Fit Cage Assembly			
DWG#: R-SH-008120-6-F		SHEET: 2/4	REV. B
UNIT: mm	SCALE: A4 1:1	CHECKED: Gary Kang	
TOLERANCE: Angle: ± 1° X ± 0.25 .X ± 0.20 .XX ± 0.15		MATERIAL: RoHS Compliant	APPROVED: George Yang
THIRD ANGLE PROJECTION		DRAWN: Jun	DATE: 10/14/2019

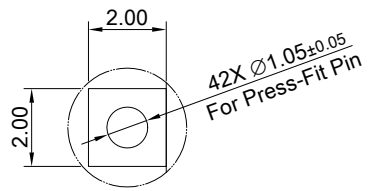


THIS AREA DENOTES COMPONENT
KEEP-OUT (TRACES ALLOWED)

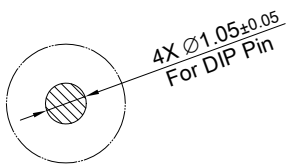
HATCHED AREA DENOTES
COMPONENTS AND TRACE KEEP-OUT
(EXCEPT CHASSIS GROUND)

DETAIL F
SCALE 2:1

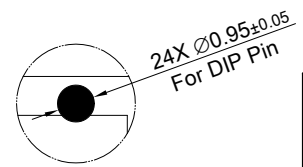
RECOMMENDED PCB LAYOUT
TOLERANCE: ±0.05



DETAIL G
SCALE 4:1



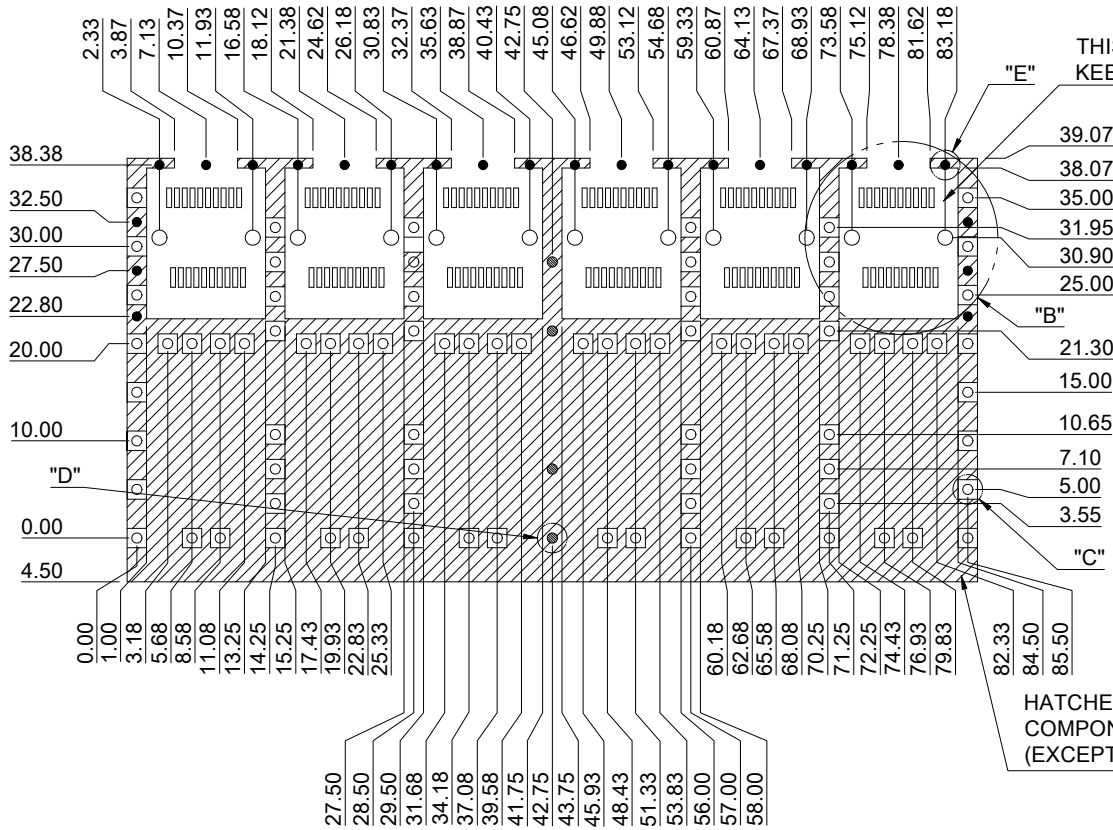
DETAIL H
SCALE 4:1



DETAIL I
SCALE 4:1



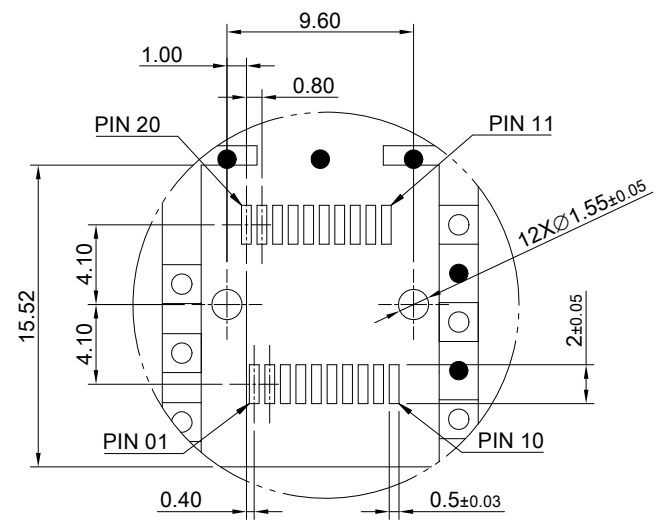
TITLE: SFP 1X6 Press Fit Cage Assembly			
DWG#: R-SH-008120-6-F		SHEET: 3/4	REV. B
UNIT: mm	SCALE: A4 5:4	FINISH:	CHECKED: Gary Kang
THIRD ANGLE PROJECTION		MATERIAL: RoHS Compliant	APPROVED: George Yang
TOLERANCE: Angle: ±1° X ± 0.15 .X ± 0.10 .XX ± 0.05		DRAWN: Jun	DATE: 10/14/2019



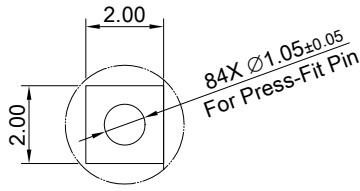
THIS AREA DENOTES COMPONENT KEEP-OUT (TRACES ALLOWED)

HATCHED AREA DENOTES COMPONENTS AND TRACE KEEP-OUT (EXCEPT CHASSIS GROUND)

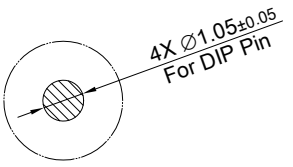
RECOMMENDED P.C.B LAYOUT FOR BELLY TO BELLY MOUNTING
TOLERANCE: ± 0.05



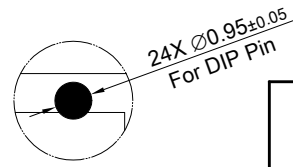
DETAIL B
SCALE 2:1



DETAIL C
SCALE 4:1



DETAIL D
SCALE 4:1



DETAIL E
SCALE 4:1



TITLE: SFP 1X6 Press Fit Cage Assembly			
DWG#: R-SH-008120-6-F		SHEET: 4/4	REV. B
UNIT: mm	SCALE: A4 5:4	FINISH:	CHECKED: Gary Kang
THIRD ANGLE PROJECTION		MATERIAL: RoHS Compliant	APPROVED: George Yang
TOLERANCE: Angle: ± 1° X ± 0.15 .X ± 0.10 .XX ± 0.05		DRAWN: Jun	DATE: 10/14/2019