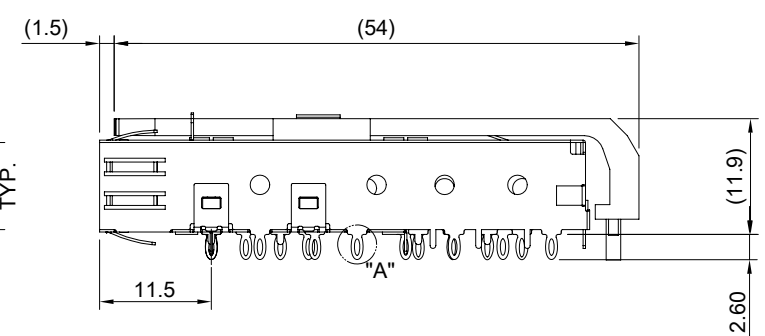
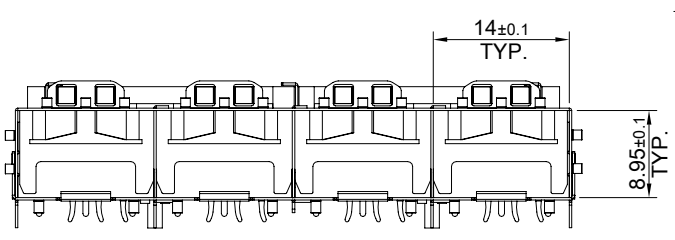
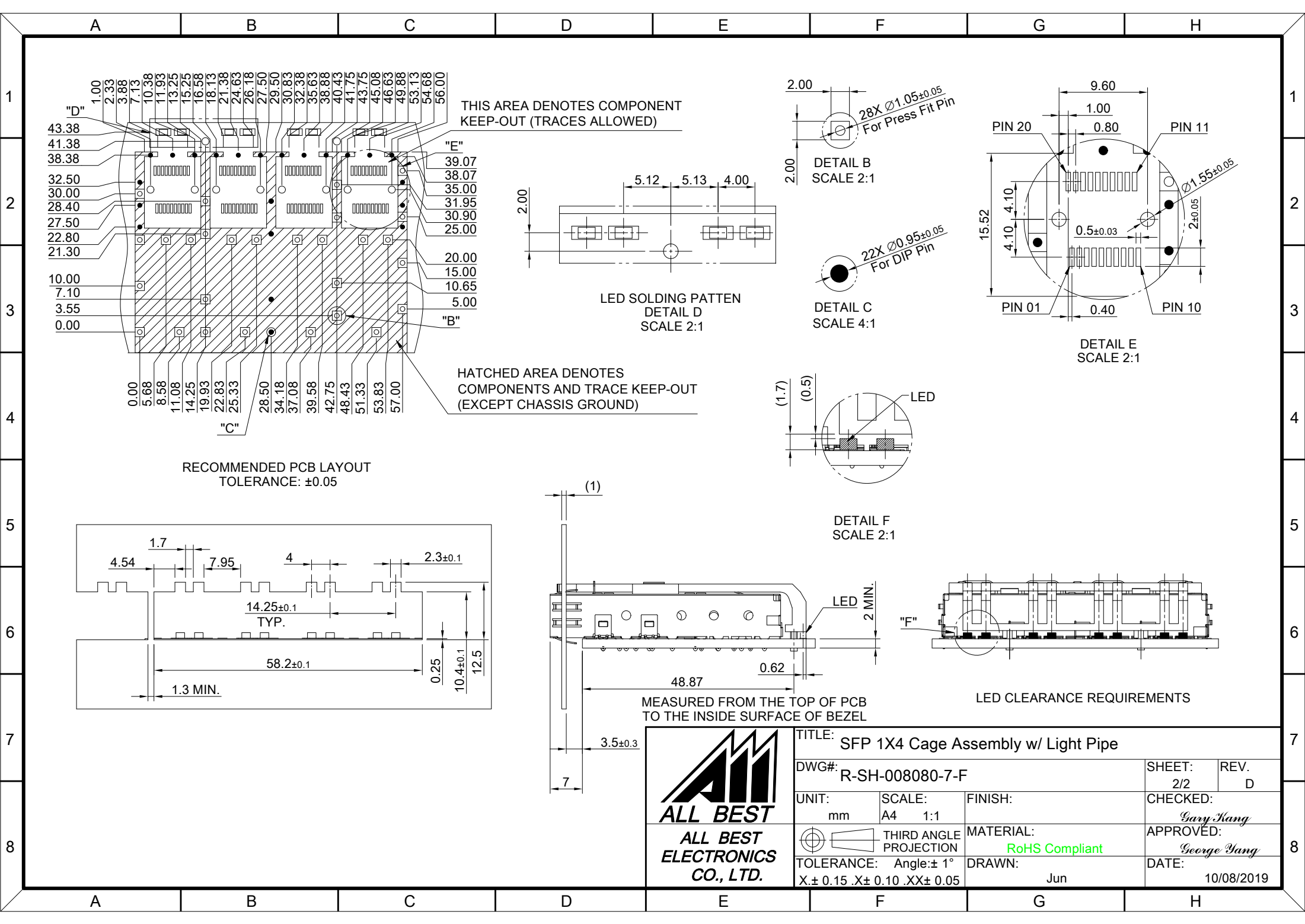


MATERIAL
CAGE: NICKEL SILVER
LIGHT PIPE: PC



<p>ALL BEST ALL BEST ELECTRONICS CO., LTD.</p>	TITLE: SFP 1X4 Cage Assembly w/ Light Pipe			SHEET: 1/2		REV. D
	DWG#: R-SH-008080-7-F			CHECKED: Gary Kang		
	UNIT: mm	SCALE: A4 5:4	FINISH:	APPROVED: George Yang		
	TOLERANCE: Angle: $\pm 1^\circ$ X: ± 0.25 .X: ± 0.20 .XX: ± 0.15		MATERIAL: RoHS Compliant	DRAWN: Jun	DATE: 10/08/2019	



THIS AREA DENOTES COMPONENT
KEEP-OUT (TRACES ALLOWED)

HATCHED AREA DENOTES
COMPONENTS AND TRACE KEEP-OUT
(EXCEPT CHASSIS GROUND)

RECOMMENDED PCB LAYOUT
TOLERANCE: ± 0.05

LED SOLDERING PATTEN
DETAIL D
SCALE 2:1

DETAIL C
SCALE 4:1

DETAIL E
SCALE 2:1

DETAIL F
SCALE 2:1

LED CLEARANCE REQUIREMENTS

MEASURED FROM THE TOP OF PCB
TO THE INSIDE SURFACE OF BEZEL



TITLE: SFP 1X4 Cage Assembly w/ Light Pipe			
DWG#: R-SH-008080-7-F		SHEET: 2/2	REV. D
UNIT: mm	SCALE: A4 1:1	FINISH:	CHECKED: Gary Kang
THIRD ANGLE PROJECTION		MATERIAL: RoHS Compliant	APPROVED: George Yang
TOLERANCE: Angle: $\pm 1^\circ$ X ± 0.15 .X ± 0.10 .XX ± 0.05		DRAWN: Jun	DATE: 10/08/2019