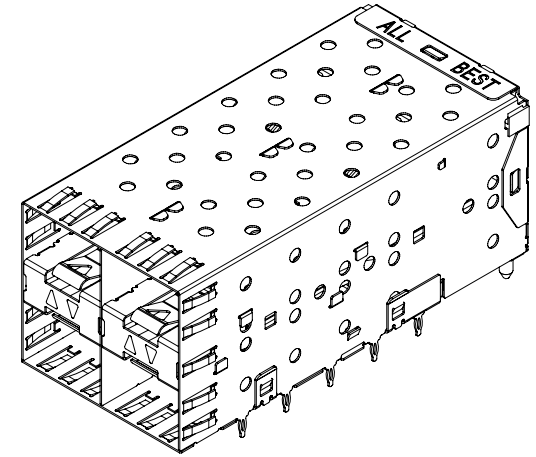
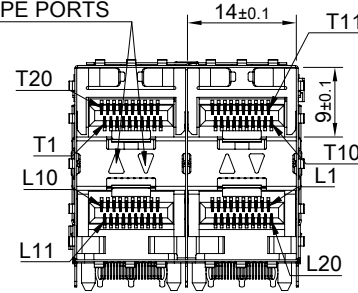


INNER LIGHT
PIPE PORTS

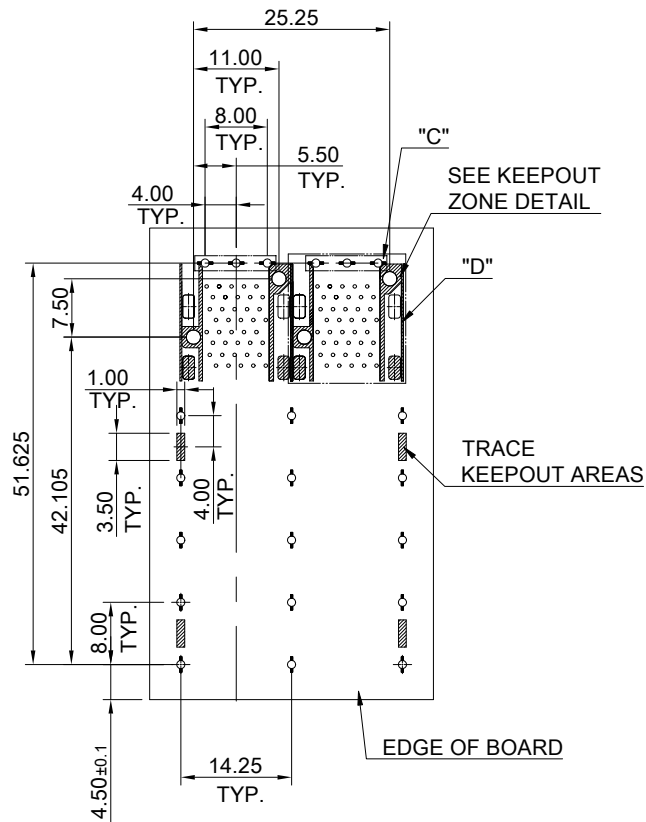


MATERIAL
 CAGE: NICKEL SILVER
 CONNECTOR: PA9T 94V-0 (BLACK)
 LCP 94V-0 (DARK GRAY)
 COPPER ALLOY
 LIGHT PIPE: PC (CLEAR)

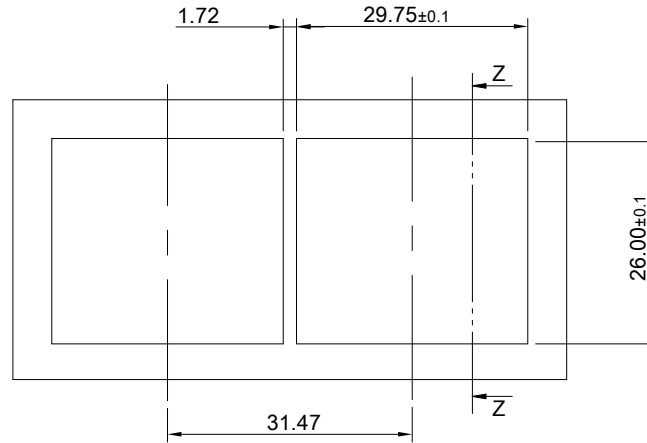
FINISH
 CONTACT: 15µ" MIN. GOLD ON MATING END;
 30µ" MIN. MATTE TIN ON TERMINATION END;
 ALL UNDERPLATED 50µ" MIN. NICKEL

ELECTRICAL CHARACTERISTICS
 CONTACT CURRENT RATING: 0.5 AMPERE
 VOLTAGE RATING: 30 VAC
 CONTACT RESISTANCE: 80 mΩ MAX.
 DIELECTRIC WITHSTANDING VOLTAGE: 300VAC

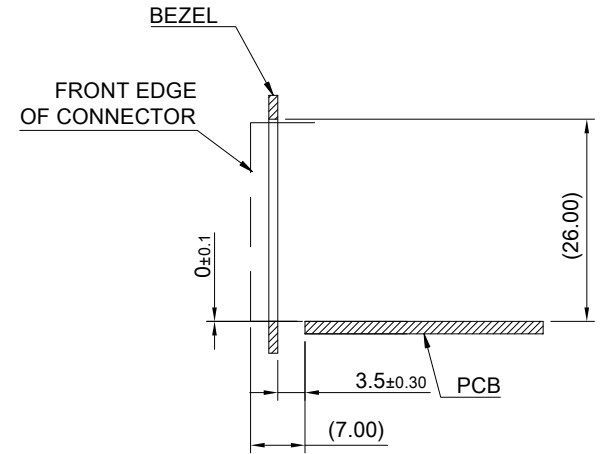
	TITLE: Transformed SFP 2X2 w/ Light Pipe		SHEET: 1/3	REV. C
	DWG#: R-OP-008080-7-F-N-20		CHECKED: Gary Yang	
	UNIT: mm	SCALE: A4 1:1	APPROVED: George Yang	
	TOLERANCE: X.± 0.25 .X± 0.20 .XX± 0.15		MATERIAL: RoHS Compliant	DATE: 10/21/2021
THIRD ANGLE PROJECTION		DRAWN: Howard		



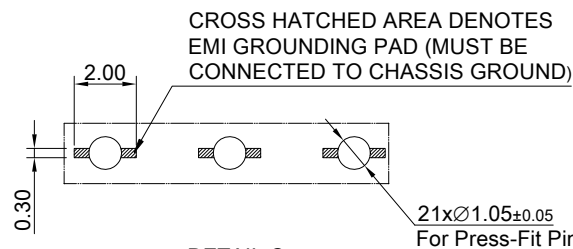
RECOMMENDED PCB LAYOUT
TOLERANCE : ±0.05
MINIMUM PCB THICKNESS OF 1.57MM



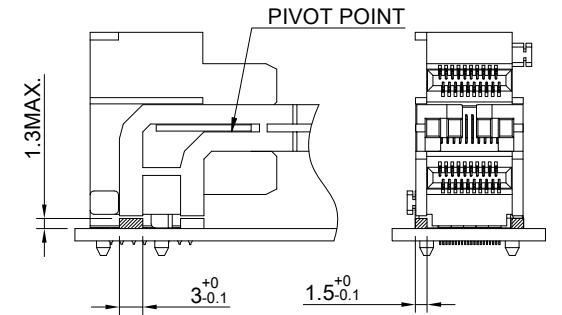
RECOMMENDED BEZEL CUT-OUT SPACING DETAIL
BEZEL THICKNESS 0.8~2.6MM




SECTION Z-Z

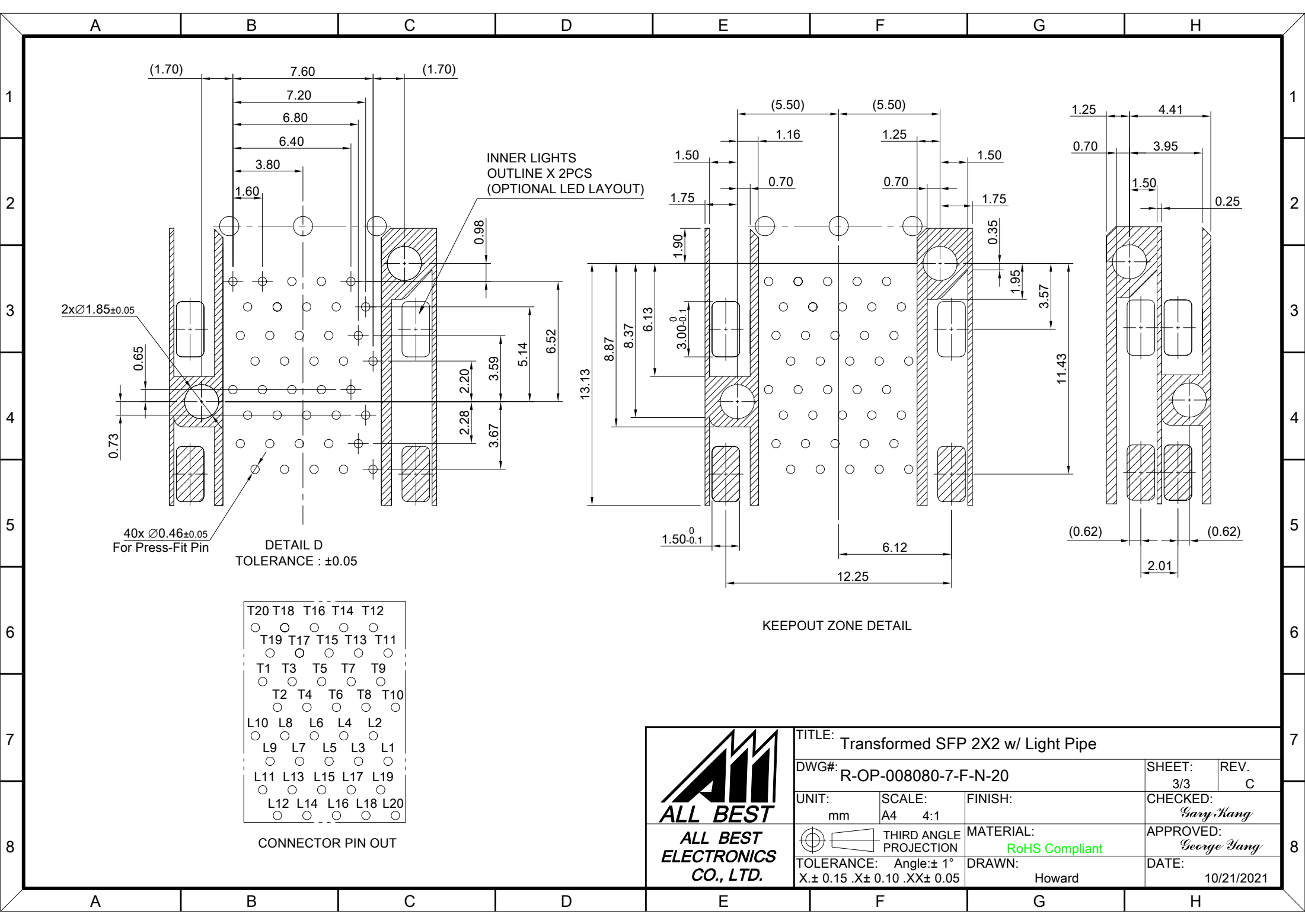


DETAIL C
SCALE 4:1



LED CLEARANCE REQUIREMENTS

 ALL BEST ELECTRONICS CO., LTD.	TITLE: Transformed SFP 2X2 w/ Light Pipe			SHEET: 2/3		REV. C
	DWG#: R-OP-008080-7-F-N-20			CHECKED: Gary Heng		
	UNIT: mm	SCALE: A4 1:1	FINISH:	APPROVED: George Yang		
	TOLERANCE: X± 0.15 .X± 0.10 .XX± 0.05		THIRD ANGLE PROJECTION	MATERIAL: RoHS Compliant	DATE: 10/21/2021	
			DRAWN: Howard			



(1.70) 7.60 (1.70)

7.20

6.80

6.40

3.80

1.60

INNER LIGHTS
OUTLINE X 2PCS
(OPTIONAL LED LAYOUT)

0.98

2.20

3.59

5.14

6.52

2.28

3.67

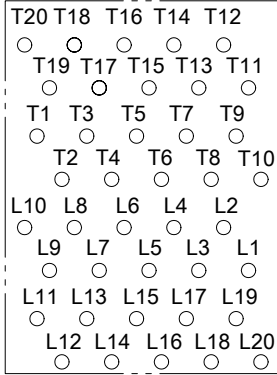
2x $\varnothing 1.85 \pm 0.05$

0.65

0.73

40x $\varnothing 0.46 \pm 0.05$
For Press-Fit Pin

DETAIL D
TOLERANCE : ± 0.05



CONNECTOR PIN OUT

(5.50) (5.50)

1.16

1.25

1.50

0.70

0.70

1.50

1.75

0.35

1.95

3.57

1.25

4.41

0.70

3.95

1.50

0.25

13.13

8.87

8.37

6.13

3.00 $^{0}_{-0.1}$

1.90

1.50 $^{0}_{-0.1}$

6.12

12.25

11.43

(0.62)

(0.62)

2.01

KEEP-OUT ZONE DETAIL



TITLE: Transformed SFP 2X2 w/ Light Pipe

DWG#: R-OP-008080-7-F-N-20

UNIT: mm

SCALE: A4 4:1

FINISH:

SHEET: 3/3
REV. C

THIRD ANGLE PROJECTION

MATERIAL: RoHS Compliant

CHECKED: Gary Yang

APPROVED: George Yang

TOLERANCE: Angle: $\pm 1^\circ$
X: ± 0.15 .X: ± 0.10 .XX: ± 0.05

DRAWN: Howard

DATE: 10/21/2021