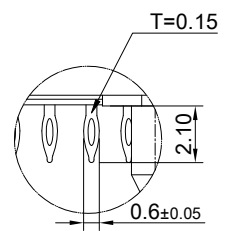
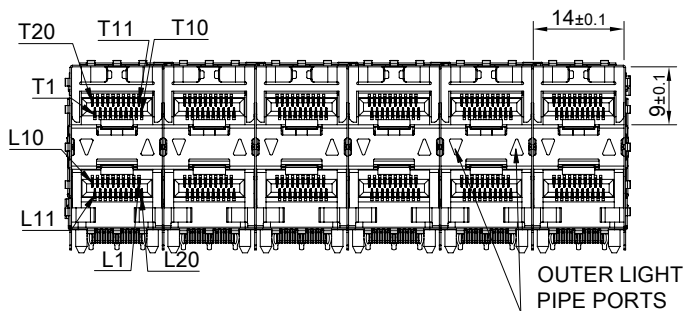
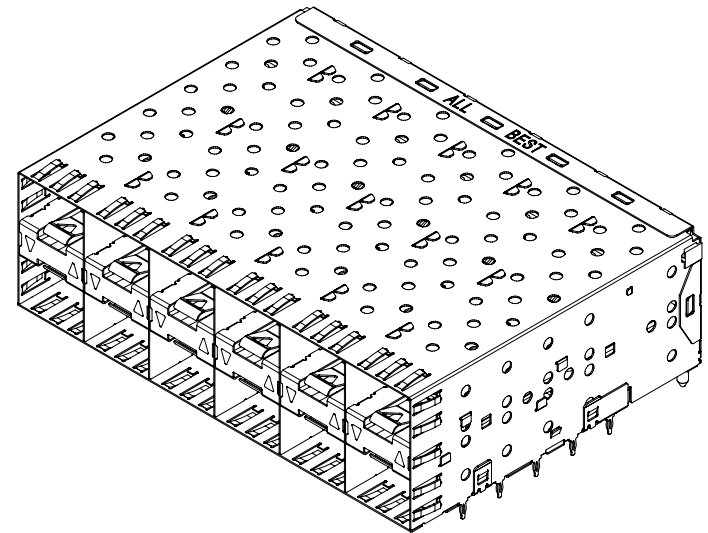


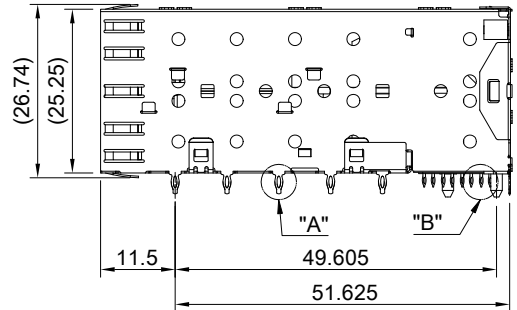
DETAIL A
SCALE 5 : 1



DETAIL B
SCALE 5 : 1



OUTER LIGHT
PIPE PORTS

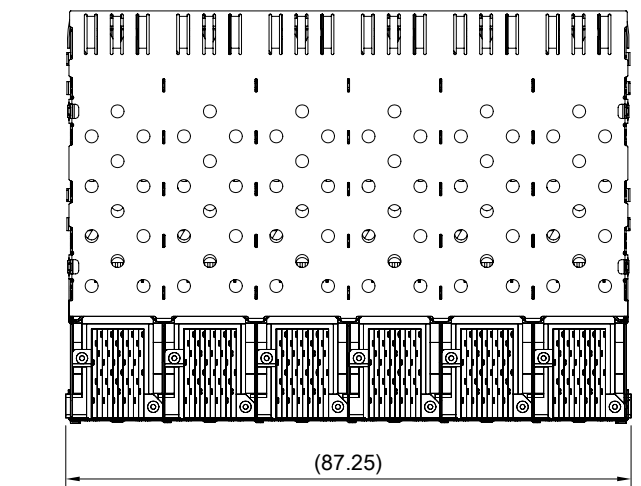


MATERIAL
 CAGE: NICKEL SILVER
 CONNECTOR: PA9T 94V-0 (BLACK)
 LCP 94V-0 (DARK GRAY)
 COPPER ALLOY

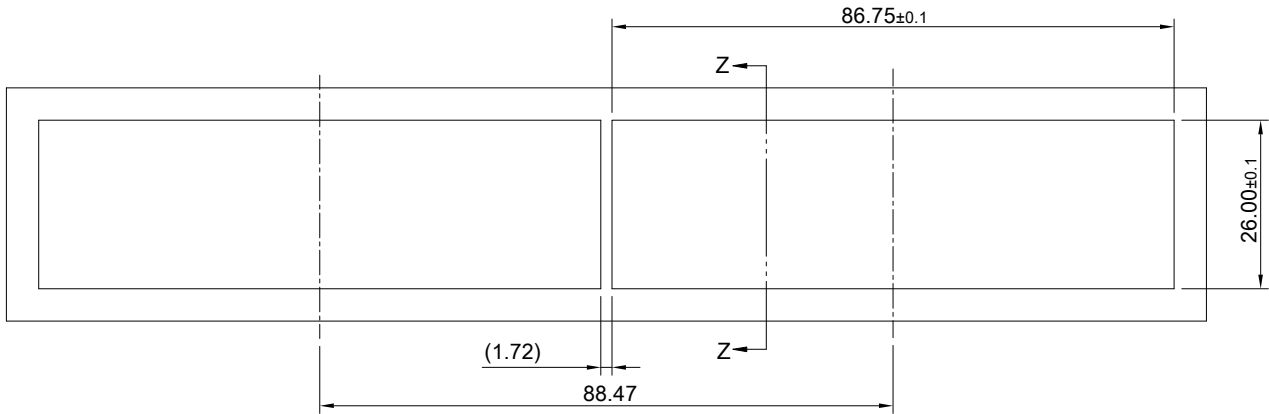
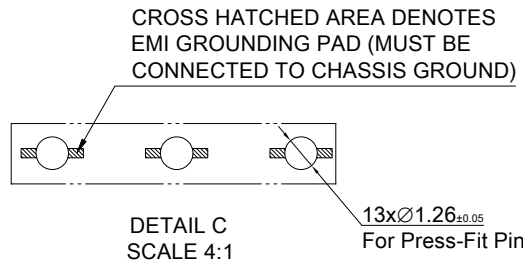
LIGHT PIPE: PC

FINISH
 CONTACT: 15µ" MIN. GOLD ON MATING END;
 30µ" MIN. TIN ON TERMINATION END;
 ALL UNDERPLATED 50µ" MIN. NICKEL

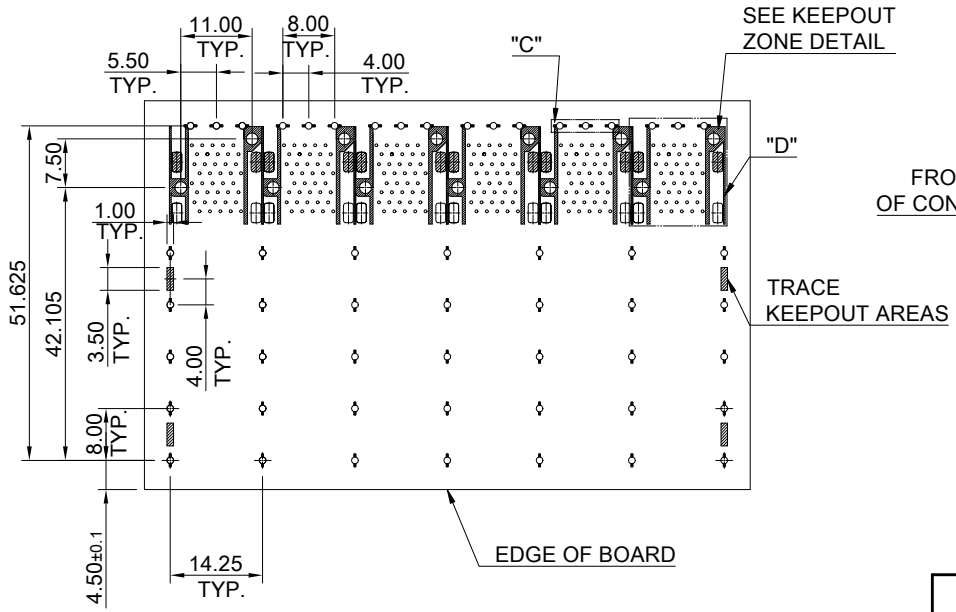
ELECTRICAL CHARACTERISTICS
 CONTACT CURRENT RATING: 0.5 AMPERE
 VOLTAGE RATING: 30 VAC
 CONTACT RESISTANCE: 80 mΩ MAX.
 DIELECTRIC WITHSTANDING VOLTAGE: 300VAC



TITLE: Transformed SFP 2X6 w/ Light Pipe			
DWG#: R-OP-008240-7-F-N-19		SHEET: 1/3	REV.: C
UNIT: mm	SCALE: A4 5:6	FINISH:	CHECKED: <i>Gary Kang</i>
THIRD ANGLE PROJECTION		MATERIAL: RoHS Compliant	APPROVED: <i>George Yang</i>
TOLERANCE: Angle: ± 1° X: ± 0.25 .X: ± 0.20 .XX: ± 0.15		DRAWN: Laura	DATE: 04/19/2022

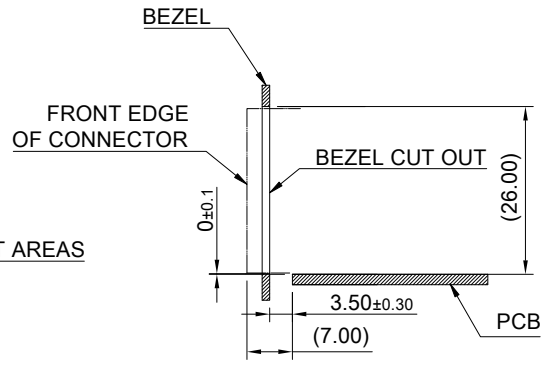


RECOMMENDED BEZEL CUT-OUT SPACING DETAIL
BEZEL THICKNESS 0.8~2.6MM

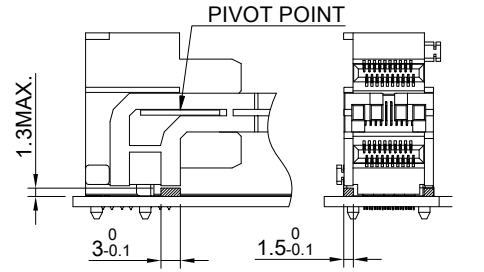


RECOMMENDED PCB LAYOUT
TOLERANCE: ±0.05
MINIMUM PCB THICKNESS OF 1.57MM

SEE KEEPOUT ZONE DETAIL



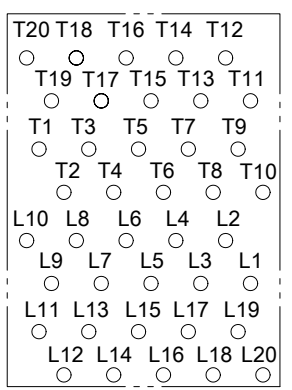
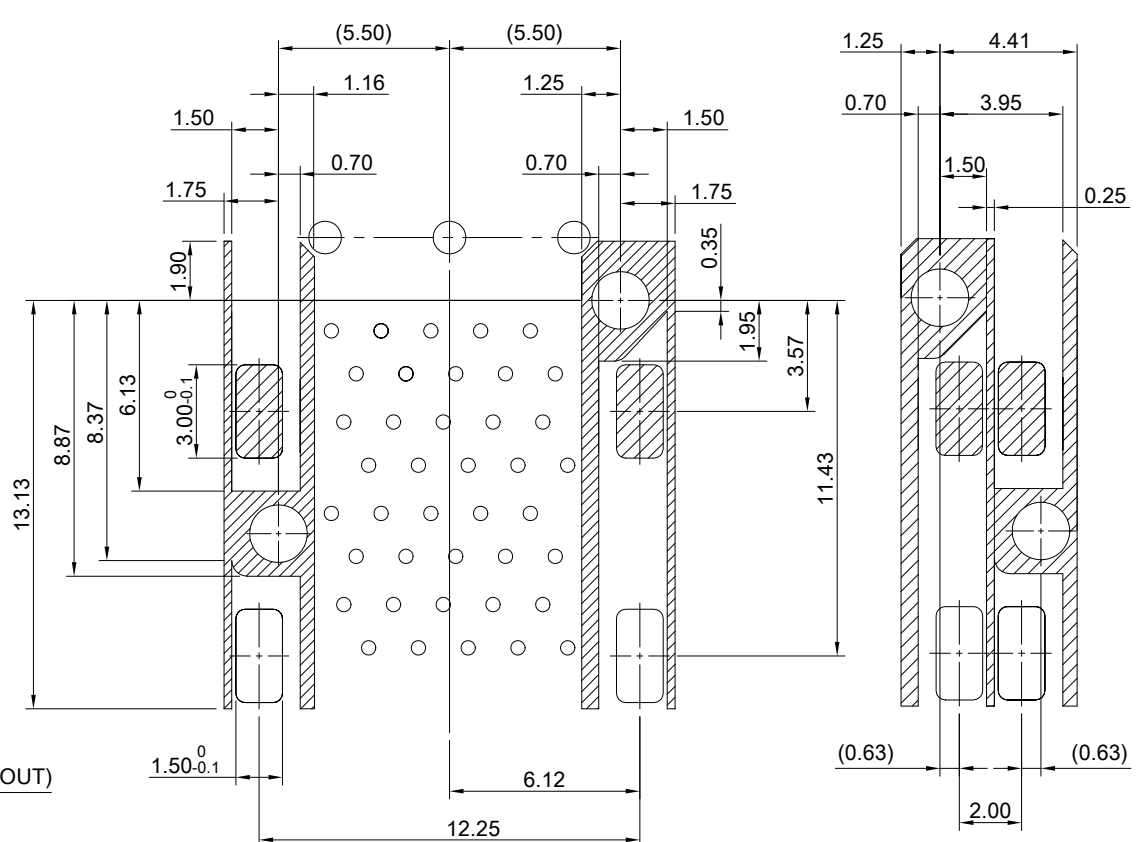
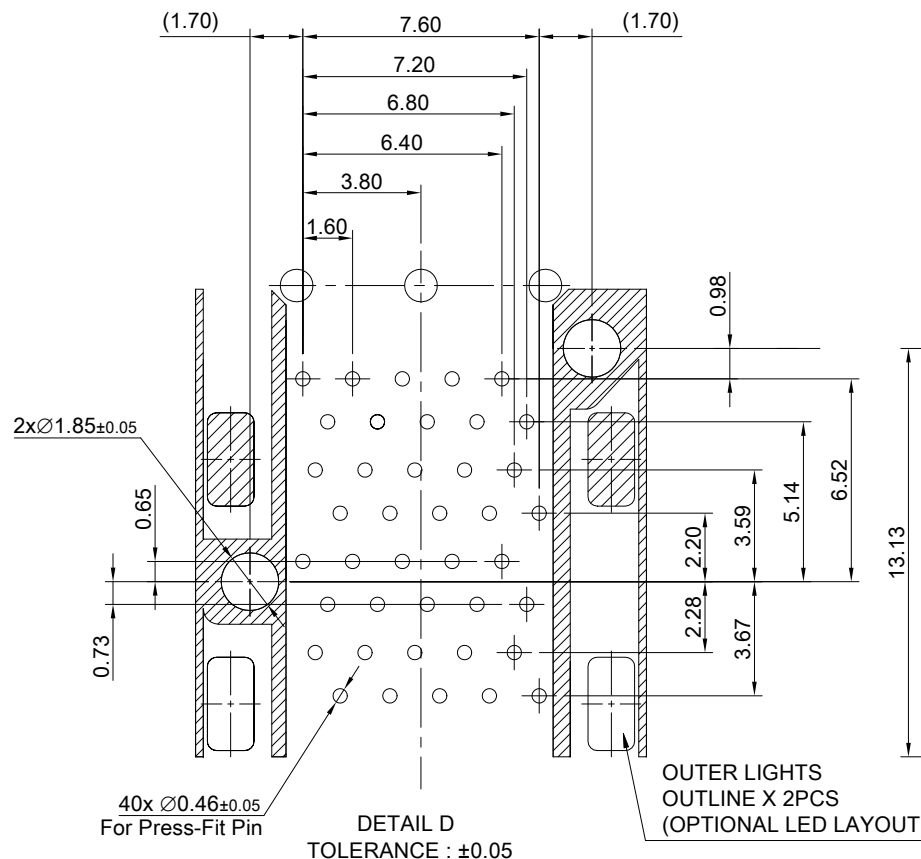
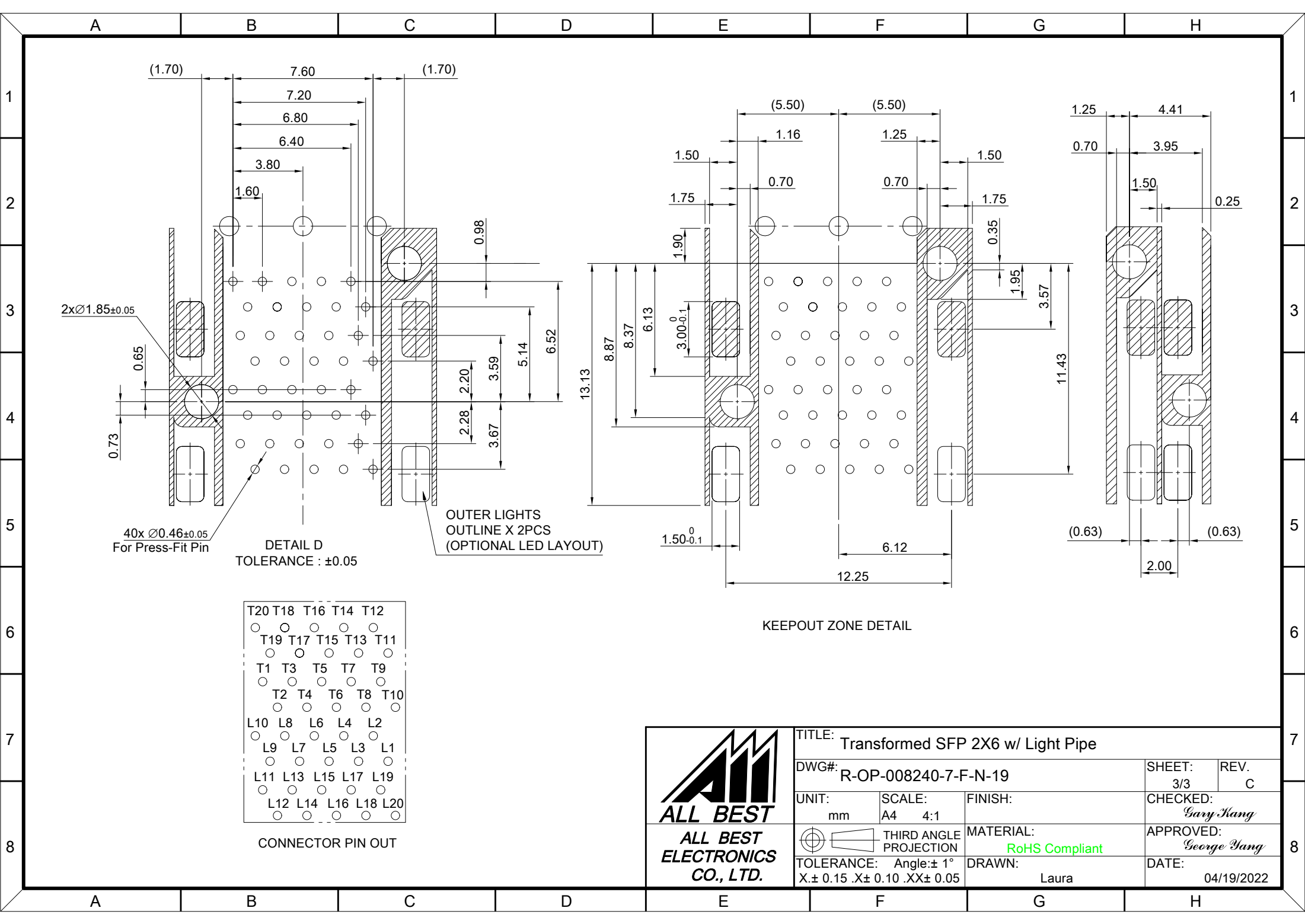
SECTION Z-Z



LED CLEARANCE REQUIREMENTS



TITLE: Transformed SFP 2X6 w/ Light Pipe			
DWG#: R-OP-008240-7-F-N-19		SHEET: 2/3	REV. C
UNIT: mm	SCALE: A4 5:6	CHECKED: Gary Yang	
THIRD ANGLE PROJECTION		MATERIAL: RoHS Compliant	APPROVED: George Yang
TOLERANCE: Angle: ± 1° X ± 0.15 .X ± 0.10 .XX ± 0.05		DRAWN: Laura	DATE: 04/19/2022



CONNECTOR PIN OUT

<p>ALL BEST ELECTRONICS CO., LTD.</p>	TITLE: Transformed SFP 2X6 w/ Light Pipe			
	DWG#: R-OP-008240-7-F-N-19		SHEET: 3/3	REV. C
	UNIT: mm	SCALE: A4 4:1	FINISH:	CHECKED: Gary Kang
	THIRD ANGLE PROJECTION TOLERANCE: Angle: $\pm 1^\circ$ X: ± 0.15 .X: ± 0.10 .XX: ± 0.05		MATERIAL: RoHS Compliant	APPROVED: George Yang
DRAWN: Laura			DATE: 04/19/2022	