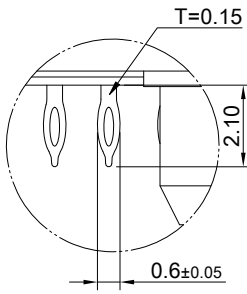
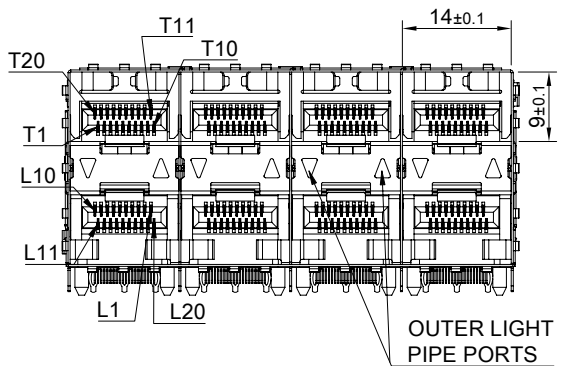
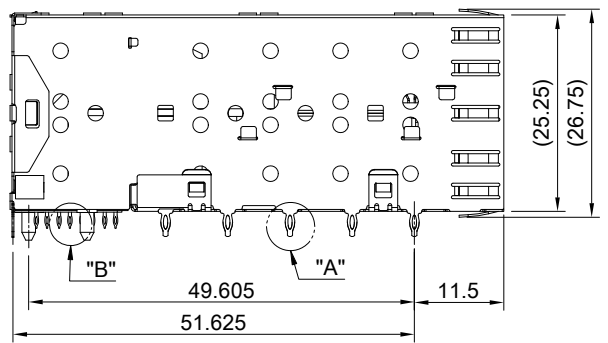
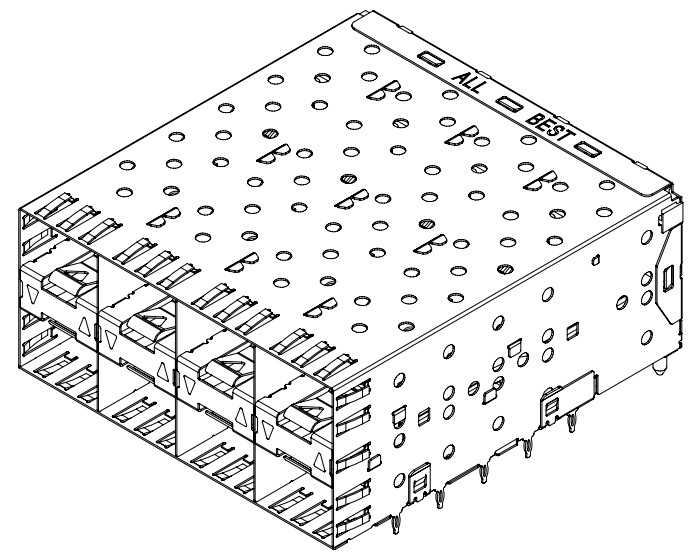


DETAIL A  
SCALE 5:1



DETAIL B  
SCALE 5:1

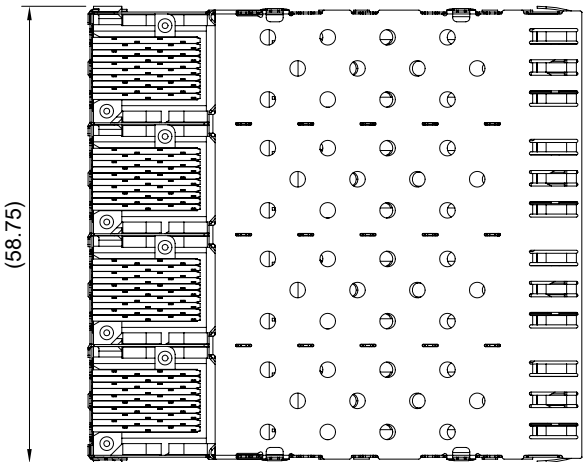


OUTER LIGHT  
PIPE PORTS

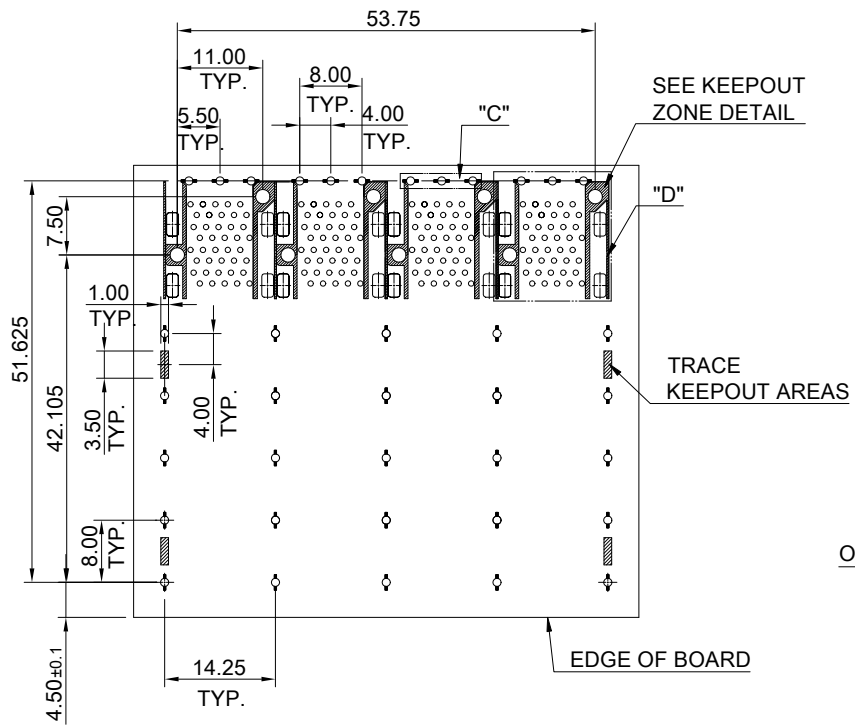
**MATERIAL**  
 CAGE: NICKEL SILVER  
 CONNECTOR: PA9T 94V-0 (BLACK)  
 LCP 94V-0 (DARK GRAY)  
 COPPER ALLOY  
 LIGHT PIPE: PC (CLEAR)

**FINISH**  
 CONTACT: 15µ" MIN. GOLD ON MATING END;  
 30µ" MIN. TIN ON TERMINATION END;  
 ALL UNDERPLATED 50µ" MIN. NICKEL

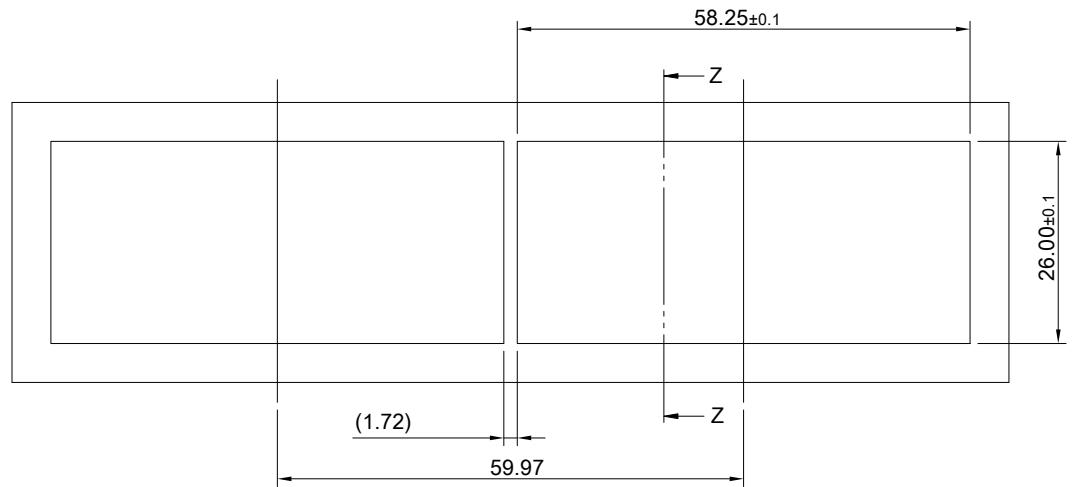
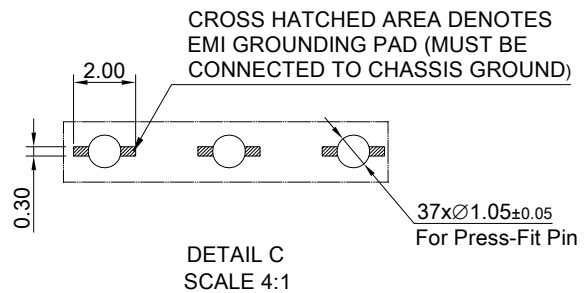
**ELECTRICAL CHARACTERISTICS**  
 CONTACT CURRENT RATING: 0.5 AMPERE  
 VOLTAGE RATING: 30 VAC  
 CONTACT RESISTANCE: 80 mΩ MAX.  
 DIELECTRIC WITHSTANDING VOLTAGE: 300VAC



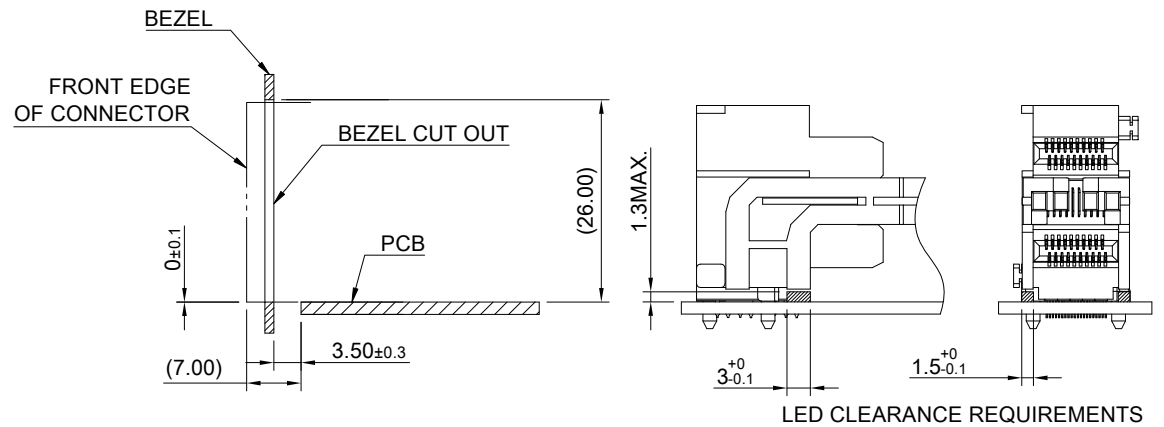
<b>TITLE:</b> Transformed SFP 2X4 w/ Light Pipe		<b>SHEET:</b> 1/3	<b>REV.:</b> C
<b>DWG#:</b> R-OP-008160-7-F-N-19		<b>CHECKED:</b> Gary Kang	
<b>UNIT:</b> mm	<b>SCALE:</b> A4 1:1	<b>APPROVED:</b> George Yang	
<b>FINISH:</b>		<b>DATE:</b> 04/20/2022	
<b>MATERIAL:</b> RoHS Compliant			
<b>TOLERANCE:</b> Angle: ± 1° X ± 0.25 .X ± 0.20 .XX ± 0.15		<b>DRAWN:</b> Laura	



RECOMMENDED PCB LAYOUT  
TOLERANCE : ± 0.05  
MINIMUM PCB THICKNESS OF 1.57MM



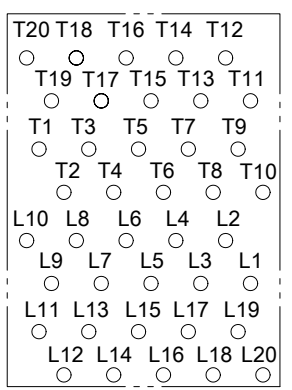
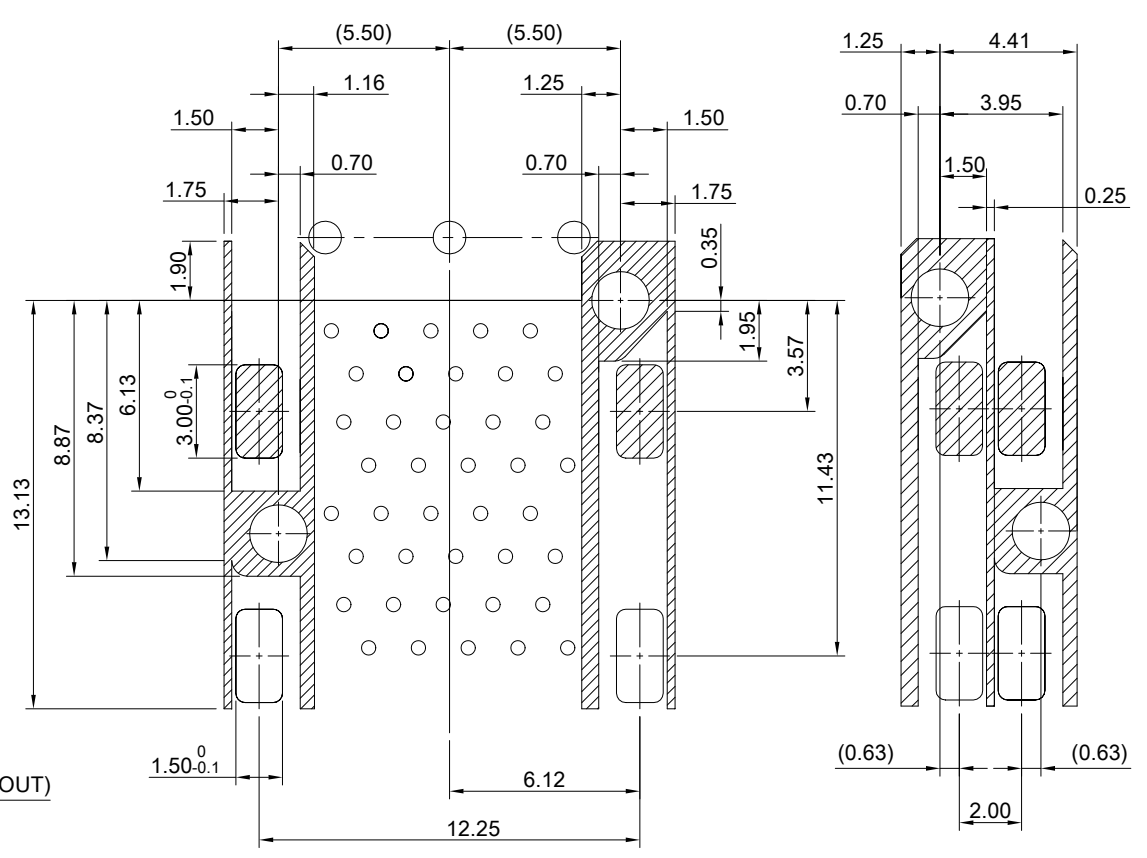
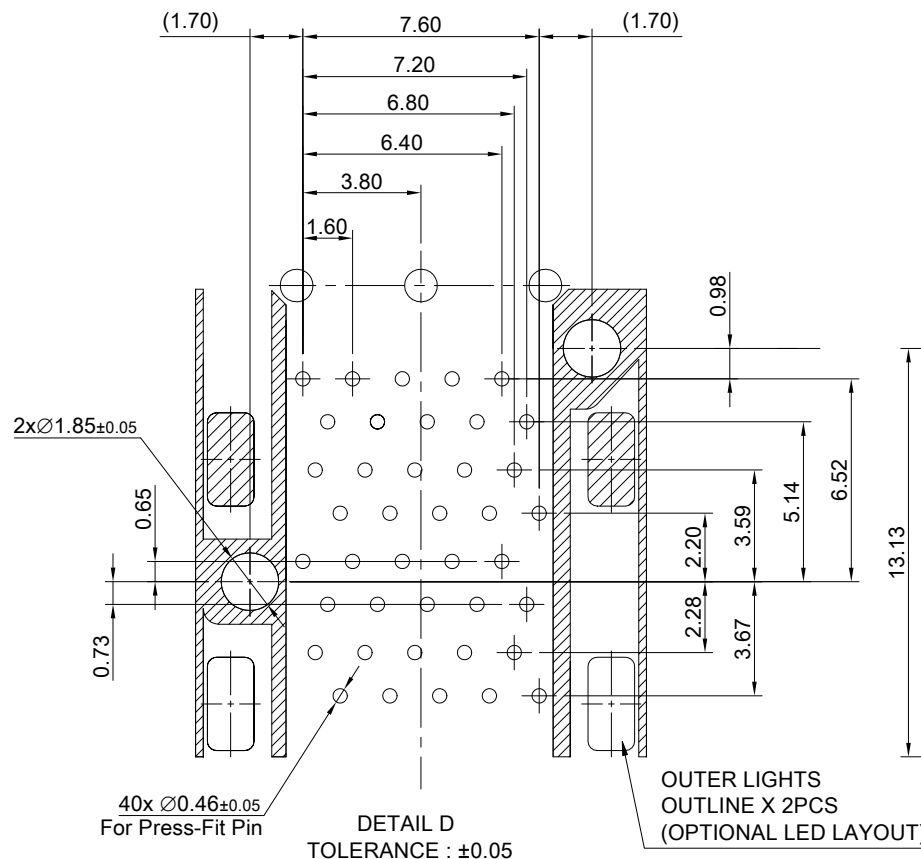
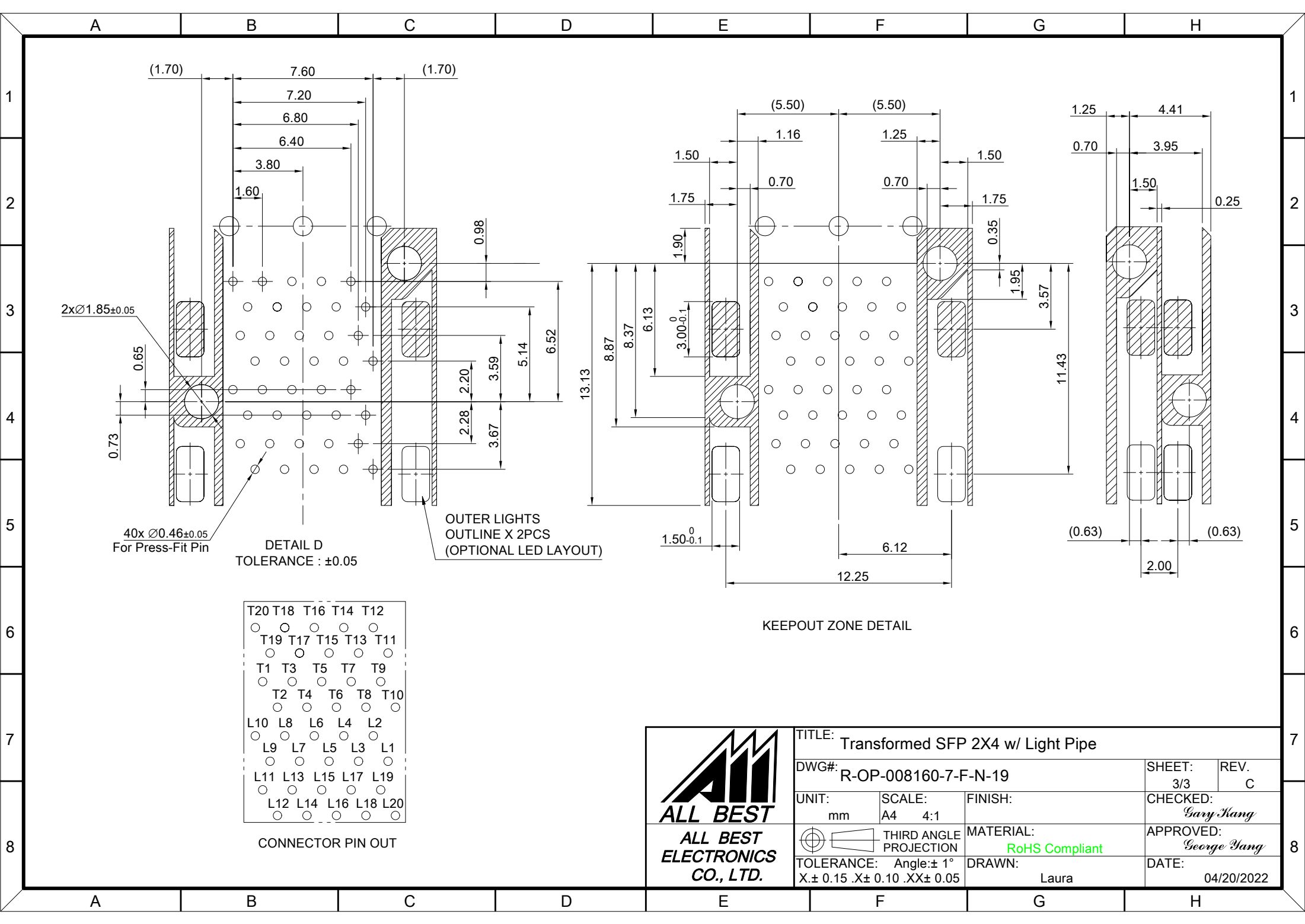
RECOMMENDED BEZEL CUT-OUT SPACING DETAIL  
BEZEL THICKNESS 0.8-2.6MM



SECTION Z-Z



TITLE: Transformed SFP 2X4 w/ Light Pipe			
DWG#: R-OP-008160-7-F-N-19		SHEET: 2/3	REV. C
UNIT: mm	SCALE: A4 1:1	CHECKED: Gary Kang	
THIRD ANGLE PROJECTION		APPROVED: George Yang	
TOLERANCE: Angle: ± 1° X.± 0.15 .X± 0.10 .XX± 0.05		MATERIAL: RoHS Compliant	DATE: 04/20/2022
		DRAWN: Laura	



CONNECTOR PIN OUT

<p><b>ALL BEST</b> ELECTRONICS CO., LTD.</p>	TITLE: Transformed SFP 2X4 w/ Light Pipe			
	DWG#: R-OP-008160-7-F-N-19		SHEET: 3/3	REV. C
	UNIT: mm	SCALE: A4 4:1	FINISH:	CHECKED: Gary Kang
	THIRD ANGLE PROJECTION TOLERANCE: Angle: $\pm 1^\circ$ X: $\pm 0.15$ .X: $\pm 0.10$ .XX: $\pm 0.05$		MATERIAL: RoHS Compliant	APPROVED: George Yang
DRAWN: Laura			DATE: 04/20/2022	