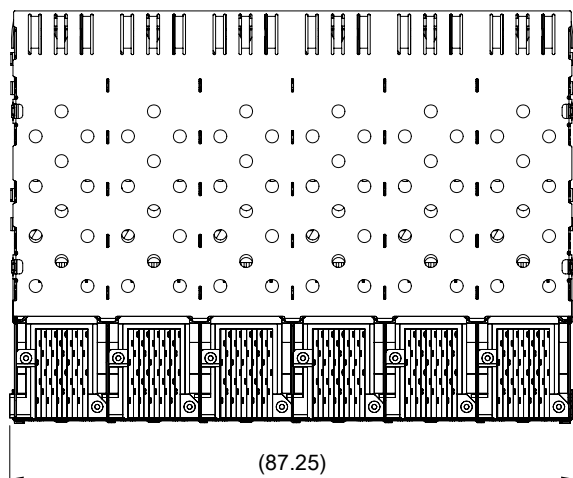


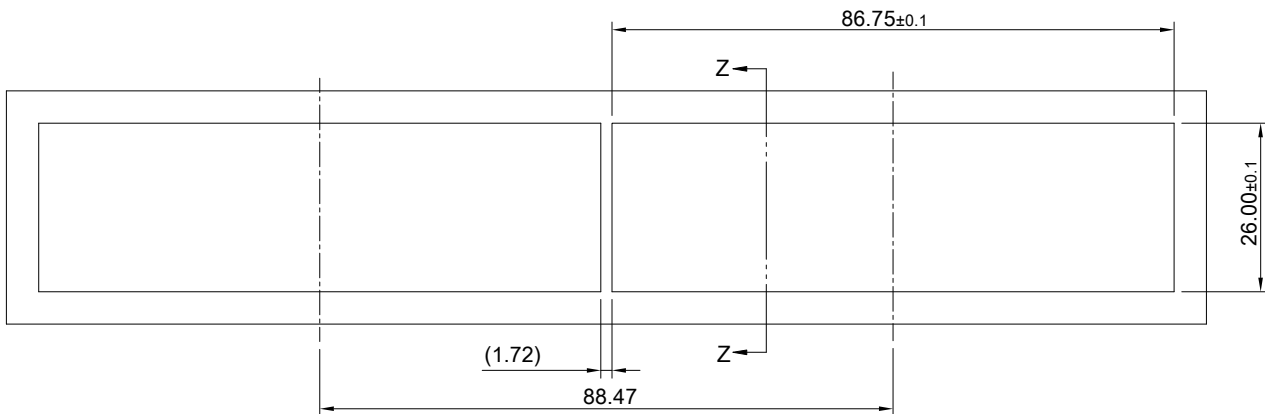
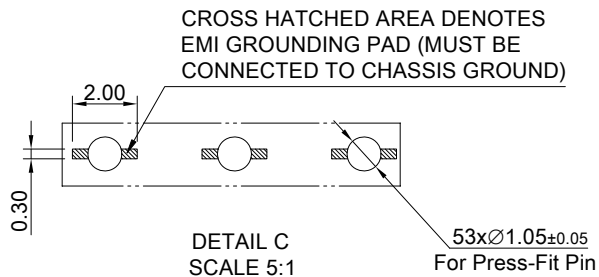
MATERIAL
 CAGE: NICKEL SILVER
 CONNECTOR: PA9T 94V-0 (BLACK)
 LCP 94V-0 (DARK GRAY)
 COPPER ALLOY

FINISH
 CONTACT: 15µ" MIN. GOLD ON MATING END;
 30µ" MIN. TIN ON TERMINATION END;
 ALL UNDERPLATED 50µ" MIN. NICKEL

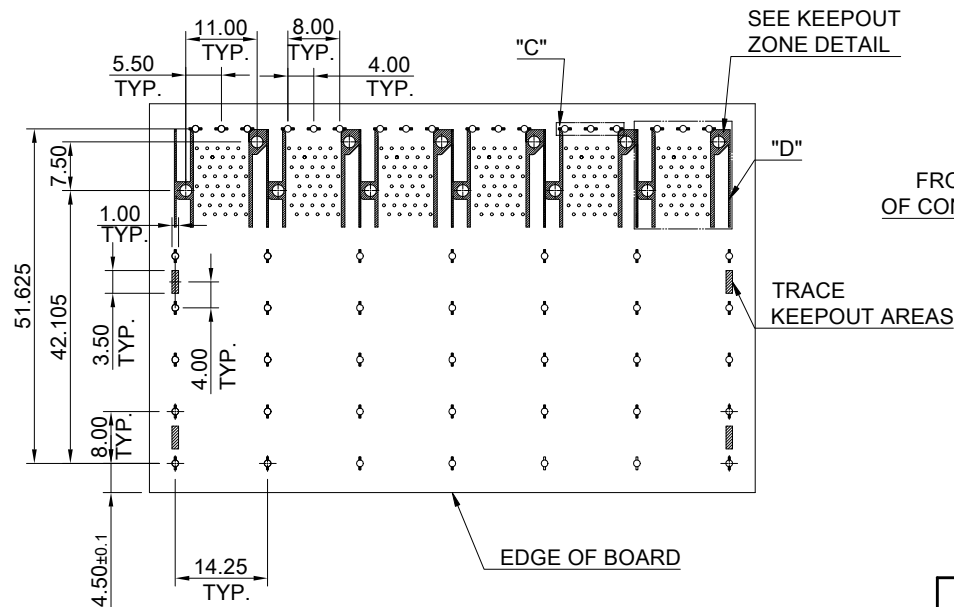
ELECTRICAL CHARACTERISTICS
 CONTACT CURRENT RATING: 0.5 AMPERE
 VOLTAGE RATING: 30 VAC
 CONTACT RESISTANCE: 80 mΩ MAX.
 DIELECTRIC WITHSTANDING VOLTAGE: 300VAC



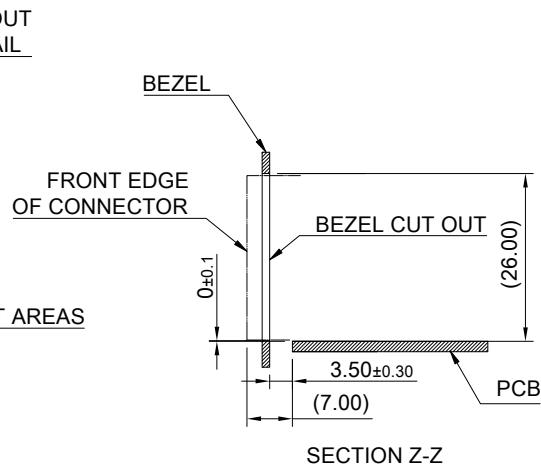
TITLE: Transformed SFP 2X6		SHEET: 1/3	REV. C
DWG#: R-OP-008240-6-F-N-13		CHECKED: Gary Kang	
UNIT: mm	SCALE: A4 5:6	APPROVED: George Yang	
THIRD ANGLE PROJECTION		DATE: 04/19/2022	
TOLERANCE: Angle: ± 1° X: ± 0.25 .X: ± 0.20 .XX: ± 0.15		DRAWN: Laura	
		MATERIAL: RoHS Compliant	




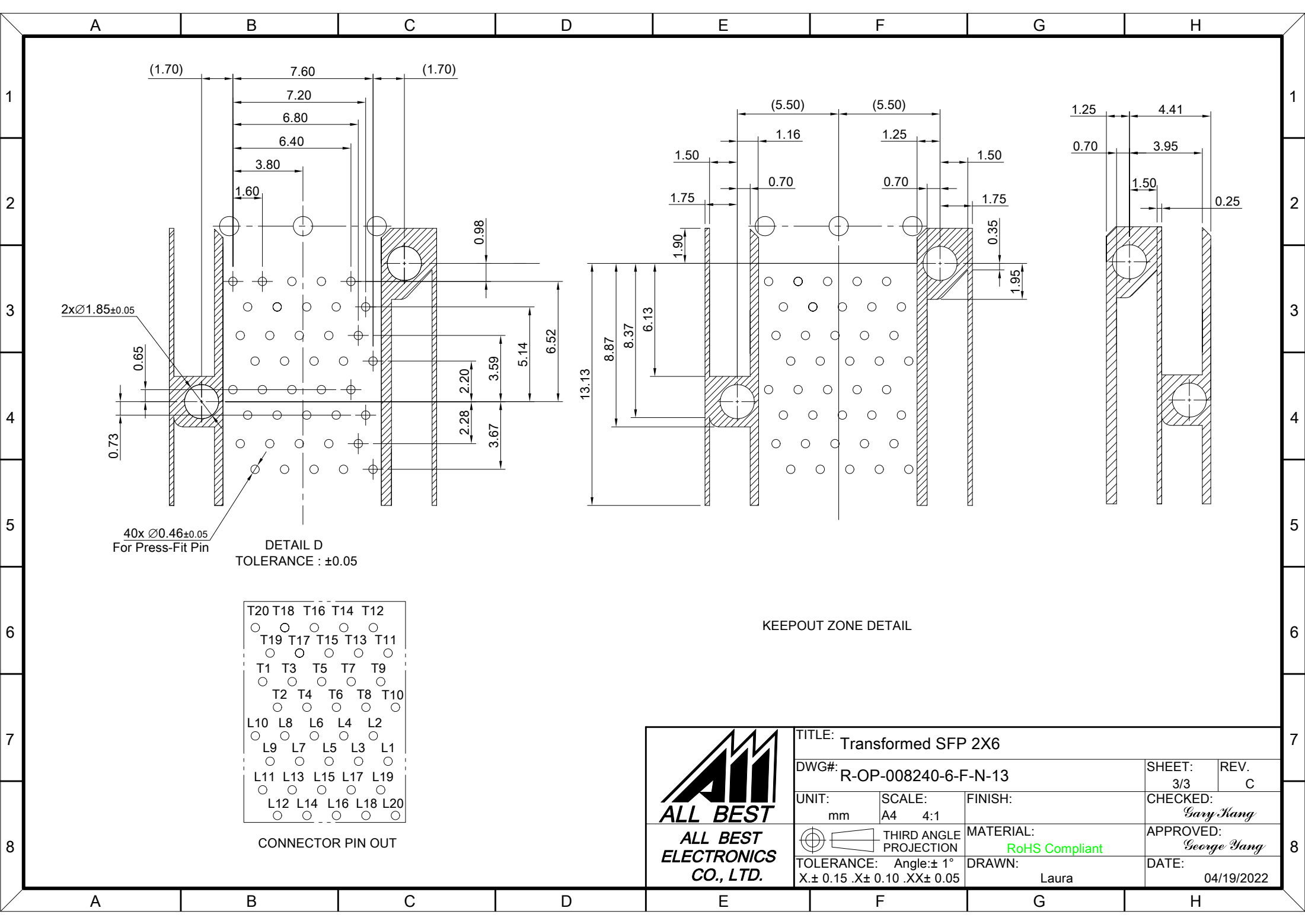
RECOMMENDED BEZEL CUT-OUT SPACING DETAIL
BEZEL THICKNESS 0.8~2.6MM



RECOMMENDED PCB LAYOUT
TOLERANCE: ±0.05
MINIMUM PCB THICKNESS OF 1.57MM



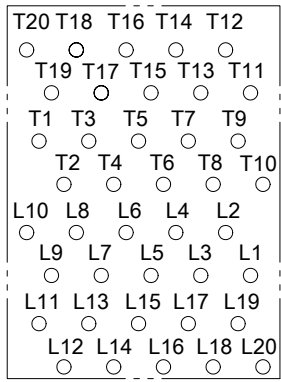
 ALL BEST ELECTRONICS CO., LTD.	TITLE: Transformed SFP 2X6		SHEET: 2/3	REV. C
	DWG#: R-OP-008240-6-F-N-13		CHECKED: Gary Kang	
	UNIT: mm	SCALE: A4 5:6	MATERIAL: RoHS Compliant	
	TOLERANCE: Angle: ±1° X: ±0.15 .X: ±0.10 .XX: ±0.05		DRAWN: Laura	
			APPROVED: George Yang	
		DATE: 04/19/2022		



2x $\varnothing 1.85 \pm 0.05$

DETAIL D
TOLERANCE : ± 0.05

40x $\varnothing 0.46 \pm 0.05$
For Press-Fit Pin



CONNECTOR PIN OUT

KEEPOUT ZONE DETAIL

<p>ALL BEST ELECTRONICS CO., LTD.</p>	TITLE: Transformed SFP 2X6		SHEET: 3/3	REV. C
	DWG#: R-OP-008240-6-F-N-13		CHECKED: Gary Kang	
	UNIT: mm	SCALE: A4 4:1	FINISH:	APPROVED: George Yang
	TOLERANCE: Angle: $\pm 1^\circ$ X: ± 0.15 .X: ± 0.10 .XX: ± 0.05		MATERIAL: RoHS Compliant	DATE: 04/19/2022
		DRAWN: Laura		