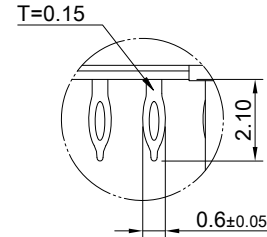
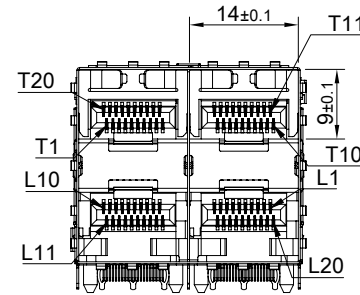
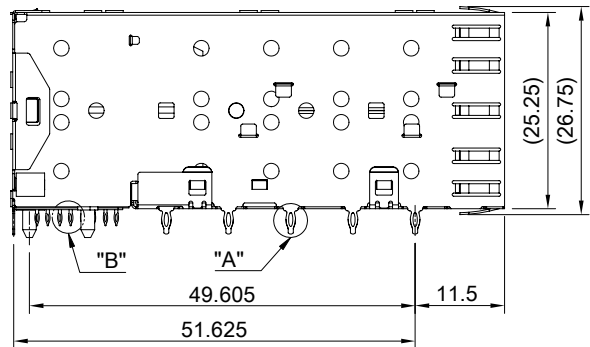
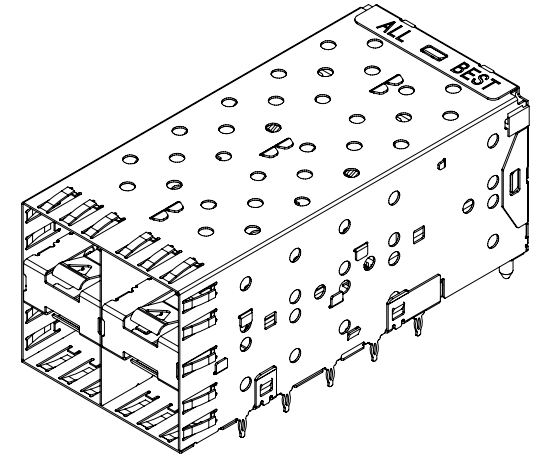


DETAIL A
SCALE 5:1



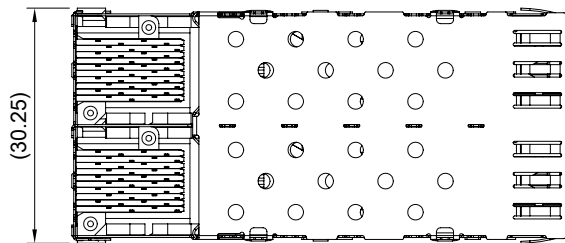
DETAIL B
SCALE 5:1



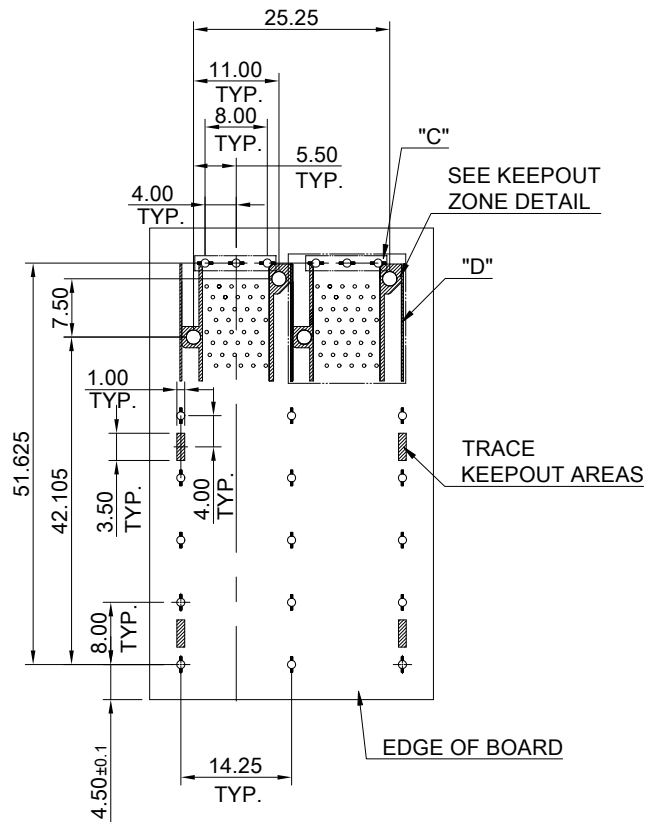
MATERIAL
 CAGE: NICKEL SILVER
 CONNECTOR: PA9T 94V-0 (BLACK)
 LCP 94V-0 (DARK GRAY)
 COPPER ALLOY

FINISH
 CONTACT: 15µ" MIN. GOLD ON MATING END;
 30µ" MIN. MATTE TIN ON TERMINATION END;
 ALL UNDERPLATED 50µ" MIN. NICKEL

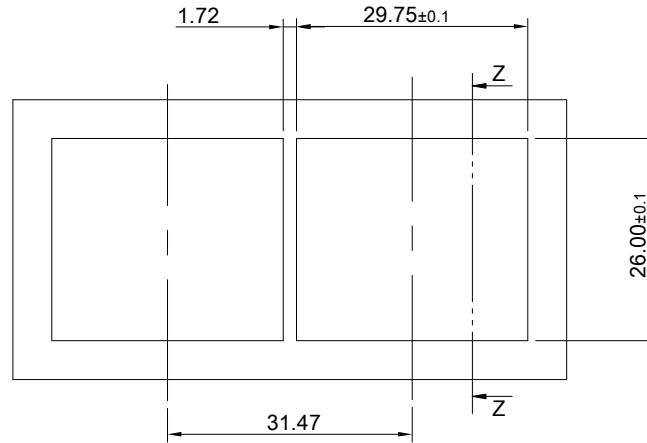
ELECTRICAL CHARACTERISTICS
 CONTACT CURRENT RATING: 0.5 AMPERE
 VOLTAGE RATING: 30 VAC
 CONTACT RESISTANCE: 80 mΩ MAX.
 DIELECTRIC WITHSTANDING VOLTAGE: 300VAC



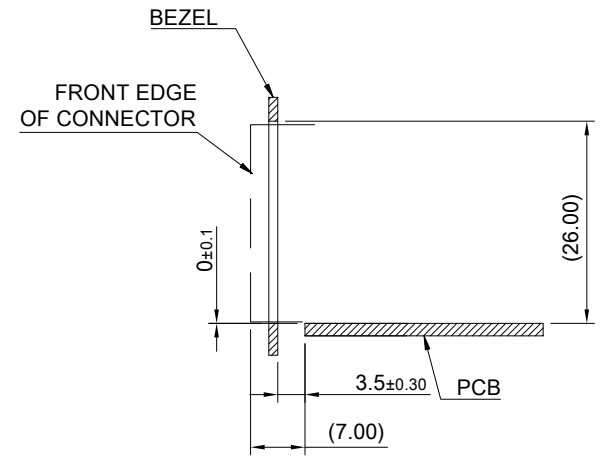
	TITLE: Transformed SFP 2X2			
	DWG#: R-OP-008080-6-F-N-13		SHEET: 1/3	REV. C
	UNIT: mm	SCALE: A4 1:1	CHECKED: Gary Yang	
	TOLERANCE: X.± 0.25 .X± 0.20 .XX± 0.15		MATERIAL: RoHS Compliant	APPROVED: George Yang
		DRAWN: Laura	DATE: 06/09/2021	



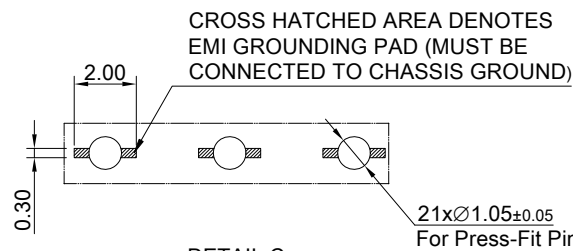
RECOMMENDED PCB LAYOUT
TOLERANCE : ±0.05
MINIMUM PCB THICKNESS OF 1.57MM



RECOMMENDED BEZEL CUT-OUT SPACING DETAIL
BEZEL THICKNESS 0.8~2.6MM



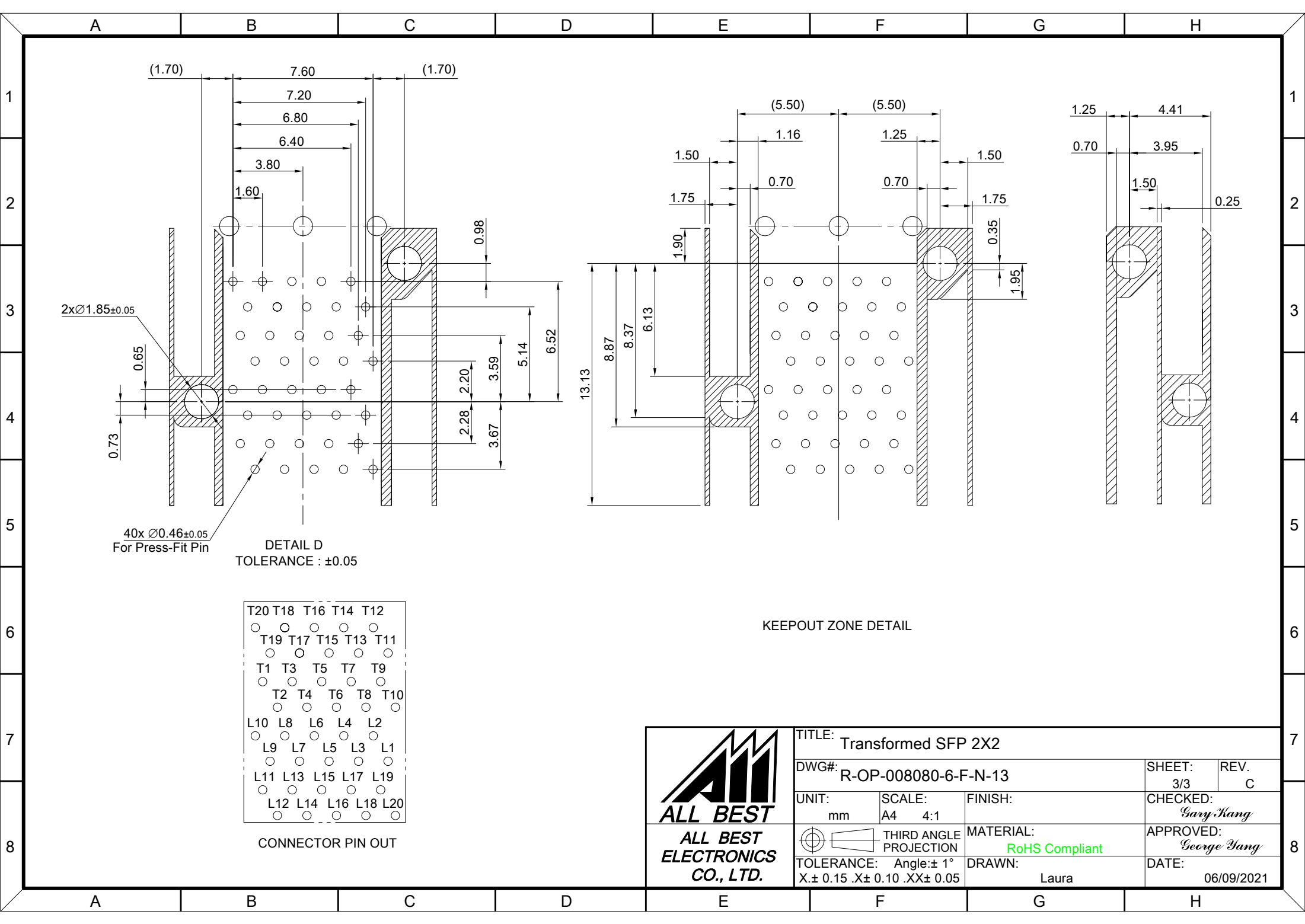
SECTION Z-Z



DETAIL C
SCALE 4:1



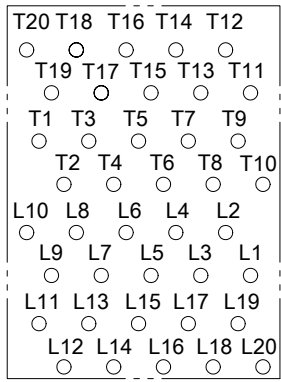
TITLE: Transformed SFP 2X2			
DWG#: R-OP-008080-6-F-N-13		SHEET: 2/3	REV. C
UNIT: mm	SCALE: A4 1:1	FINISH:	CHECKED: Gary Yang
TOLERANCE: Angle: ± 1° X.± 0.15 .X± 0.10 .XX± 0.05		MATERIAL: RoHS Compliant	APPROVED: George Yang
		DRAWN: Laura	DATE: 06/09/2021



2x $\varnothing 1.85 \pm 0.05$

DETAIL D
TOLERANCE : ± 0.05

40x $\varnothing 0.46 \pm 0.05$
For Press-Fit Pin



CONNECTOR PIN OUT

KEEPOUT ZONE DETAIL

<p>ALL BEST ELECTRONICS CO., LTD.</p>	TITLE: Transformed SFP 2X2		SHEET: 3/3	REV. C
	DWG#: R-OP-008080-6-F-N-13		CHECKED: Gary Hang	
	UNIT: mm	SCALE: A4 4:1	FINISH:	APPROVED: George Yang
	TOLERANCE: Angle: $\pm 1^\circ$ X: ± 0.15 .X: ± 0.10 .XX: ± 0.05		MATERIAL: RoHS Compliant	DATE: 06/09/2021
		DRAWN: Laura		