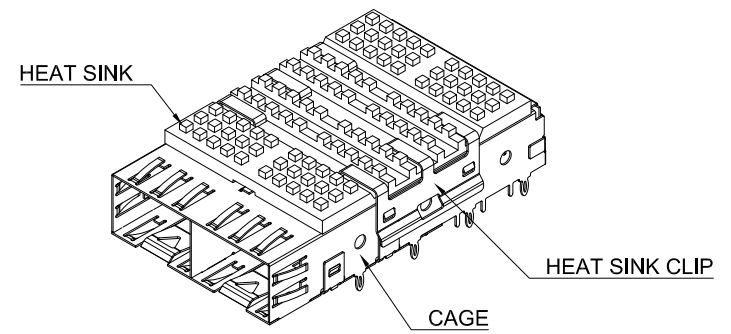
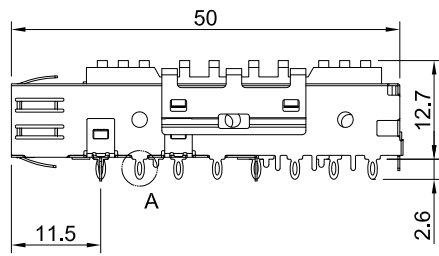
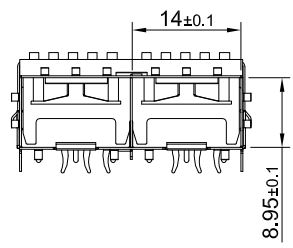



DETAIL A  
SCALE 4:1

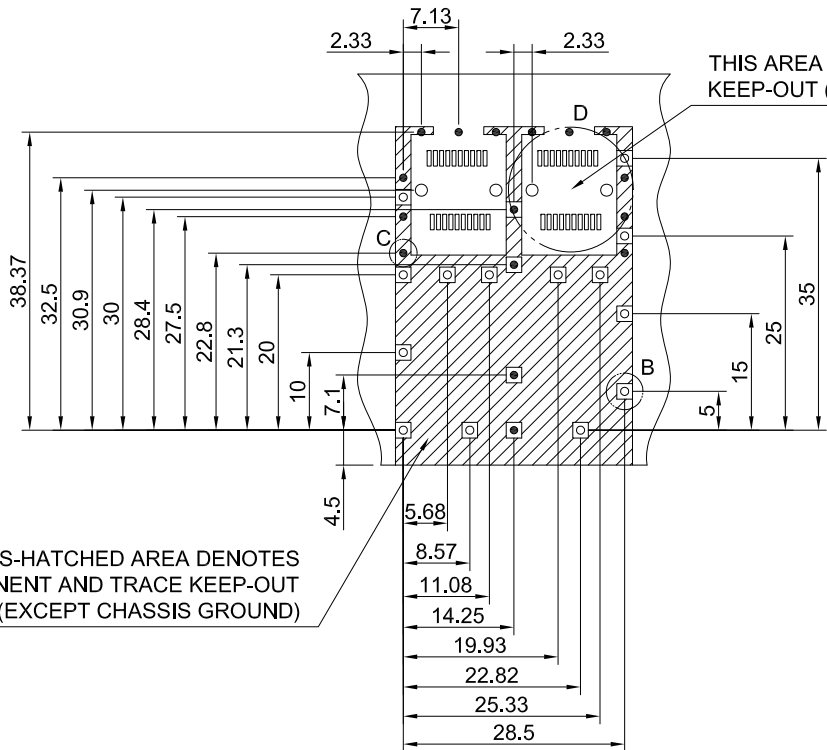


MATERIAL  
 CAGE: NICKEL SILVER  
 HEAT SINK: ALUMINUM  
 HEAT SINK CLIP: STAINLESS STEEL

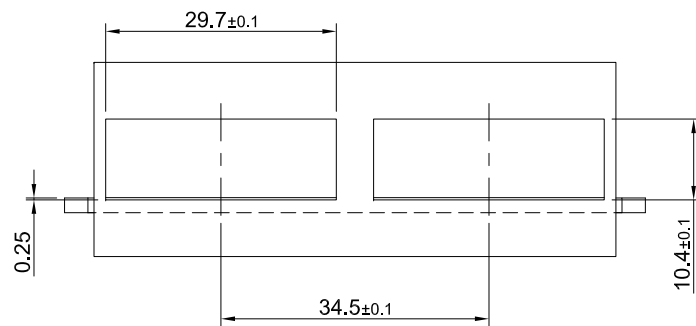
FINISH  
 HEAT SINK: ANODE PROCESS



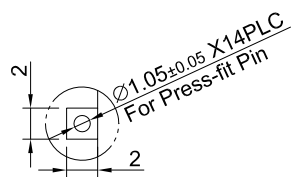
 <b>ALL BEST</b> ALL BEST ELECTRONICS CO., LTD.	<b>TITLE:</b> SFP+ 1X2 Cage Assembly w/ PCI Heat Sink		<b>SHEET:</b> 1/2		<b>REV.</b> A	
	<b>DWG#:</b> R-SH-008040-6-K-03		<b>CHECKED:</b> Gary Kang		<b>APPROVED:</b> George Yang	
	<b>UNIT:</b> mm	<b>SCALE:</b> A4 1:1	<b>FINISH:</b>	<b>MATERIAL:</b> RoHS Compliant		
	<b>TOLERANCE:</b> X± 0.25 .X± 0.20 .XX± 0.15		<b>THIRD ANGLE PROJECTION</b>	<b>DRAWN:</b> Ting	<b>DATE:</b> 03/05/2015	



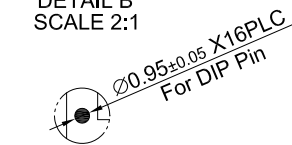
RECOMMENDED PCB LAYOUT  
TOLERANCE:  $\pm 0.05$



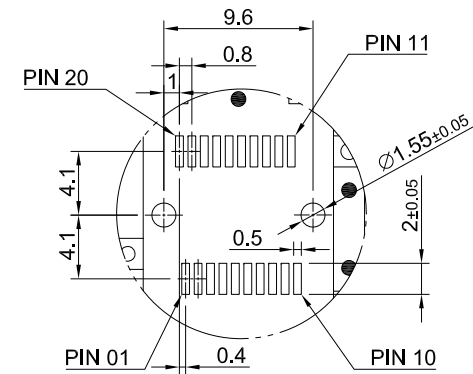
RECOMMENDED BEZEL CUT-OUT



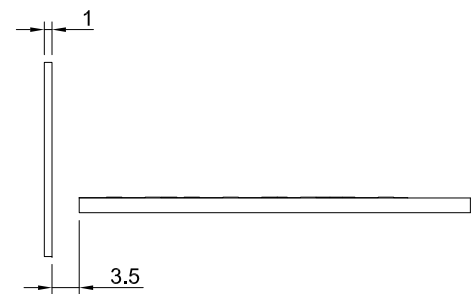
DETAIL B  
SCALE 2:1



DETAIL C  
SCALE 2:1



DETAIL D  
SCALE 2:1



	TITLE: SFP+ 1X2 Cage Assembly w/ PCI Heat Sink			SHEET: 2/2	REV. A
	DWG#: R-SH-008040-6-K-03		CHECKED: Gary Kang		APPROVED: George Yang
	UNIT: mm	SCALE: A4 1:1	FINISH:	MATERIAL: RoHS Compliant	
	TOLERANCE: $X \pm 0.15$ , $.X \pm 0.10$ , $.XX \pm 0.05$		THIRD ANGLE PROJECTION	DRAWN: Ting	DATE: 03/05/2015