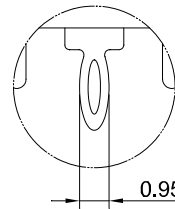
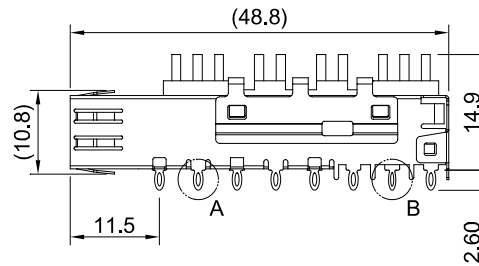
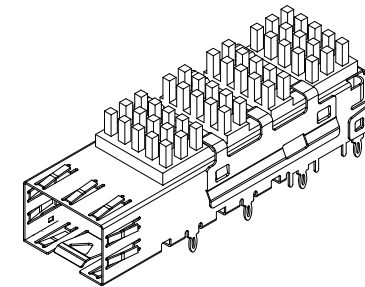


DETAIL A  
SCALE 4:1



DETAIL B  
SCALE 4:1



MATERIAL  
CAGE: NICKEL SILVER  
HEAT SINK: ALUMINUM  
HEAT SINK CLIP: STAINLESS STEEL

FINISH  
HEAT SINK: ANODE PROCESS



TITLE: SFP+ Cage One-Piece Press Fit Pins w/ Heat Sink

DWG#: R-SH-008020-6-K-02

SHEET:	REV.
1/2	C

UNIT:	SCALE:	FINISH:
mm	A4 1:1	

CHECKED:  
*Gary Kang*

THIRD ANGLE  
PROJECTION

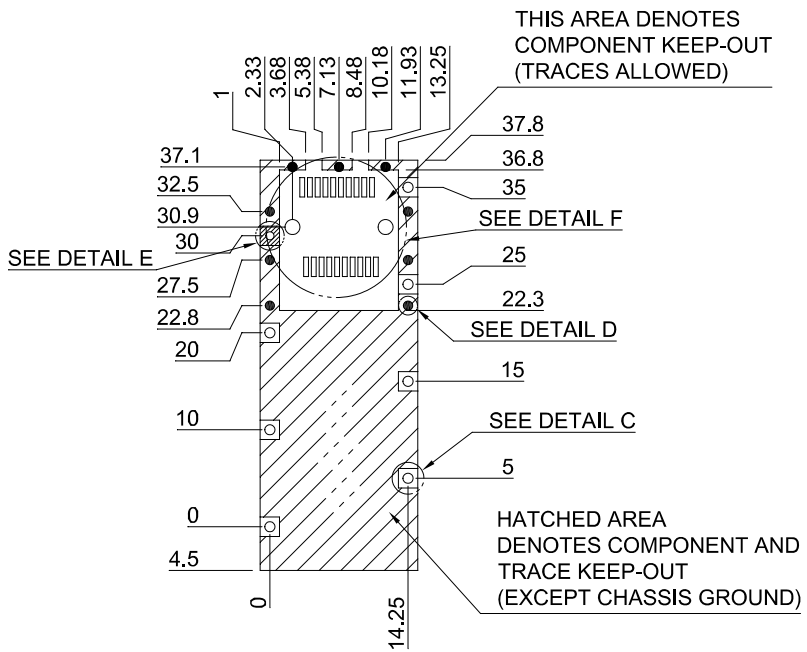
MATERIAL:  
RoHS Compliant

APPROVED:  
*George Yang*

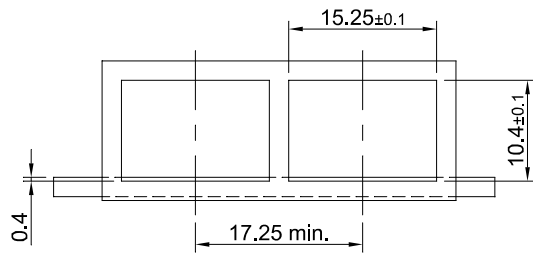
TOLERANCE: Angle: ± 1°  
X: ± 0.25 .X: ± 0.20 .XX: ± 0.15

DRAWN:  
Boris

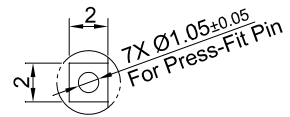
DATE:  
01/27/2016



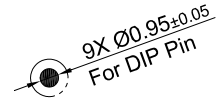
RECOMMENDED PCB LAYOUT  
TOLERANCE:  $\pm 0.05$



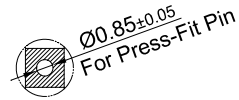
RECOMMENDED BEZEL CUT-OUT



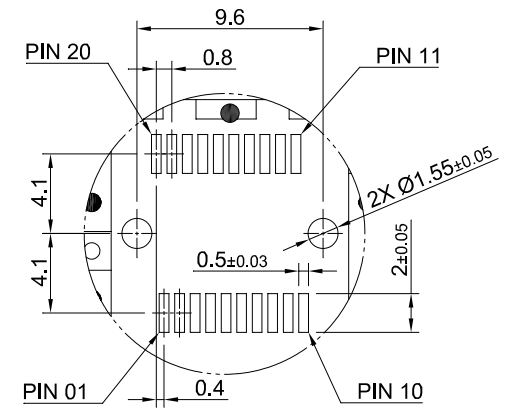
DETAIL C  
SCALE 2:1



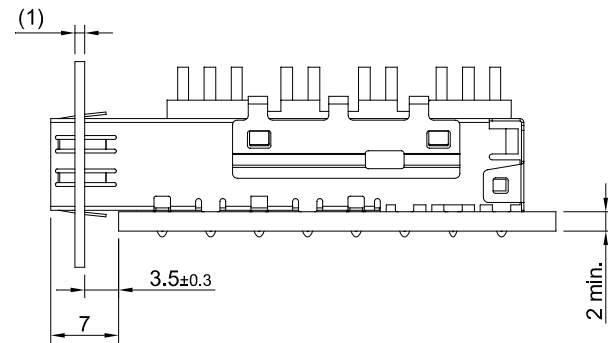
DETAIL D  
SCALE 2:1



DETAIL E  
SCALE 2:1



DETAIL F  
SCALE 2:1



	TITLE: SFP+ Cage One-Piece Press Fit Pins w/ Heat Sink			SHEET: 2/2		REV. C
	DWG#: R-SH-008020-6-K-02			CHECKED: Gary Kang		
	UNIT: mm	SCALE: A4 5:4	FINISH:	APPROVED: George Yang		
	TOLERANCE: Angle: $\pm 1^\circ$ X: $\pm 0.15$ .X: $\pm 0.10$ .XX: $\pm 0.05$		MATERIAL: RoHS Compliant	DATE: 01/27/2016		
THIRD ANGLE PROJECTION			DRAWN: Boris			