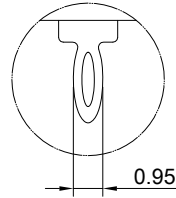
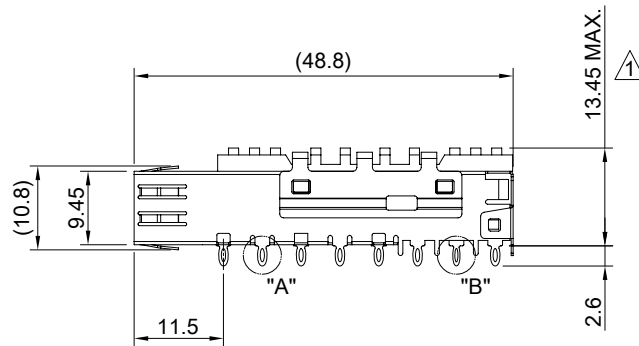
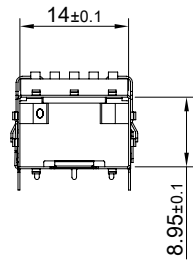
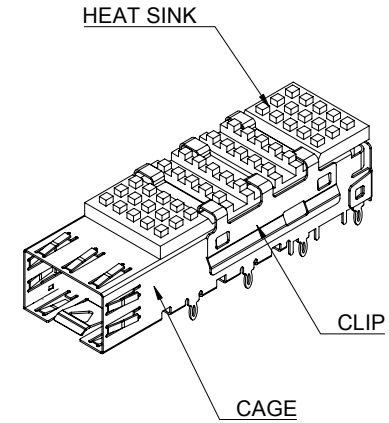


DETAIL A
SCALE 4:1



DETAIL B
SCALE 4:1



MATERIAL
CAGE: NICKEL SILVER
HEAT SINK: ALUMINUM
HEAT SINK CLIP: STAINLESS STEEL

FINISH
HEAT SINK: ANODE PROCESS

NOTE
△ DIMENSION APPLIES WITH MODULE INSERTED IN CAGE



TITLE: SFP+ Cage One-Piece Press Fit Pins w/ PCI Heat Sink

DWG#: R-SH-008020-6-K-03

SHEET: 1/3
REV. C

UNIT: mm
SCALE: A4 1:1

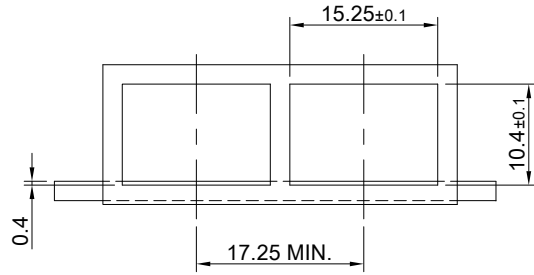
FINISH: CHECKED: Gary Kang

THIRD ANGLE PROJECTION

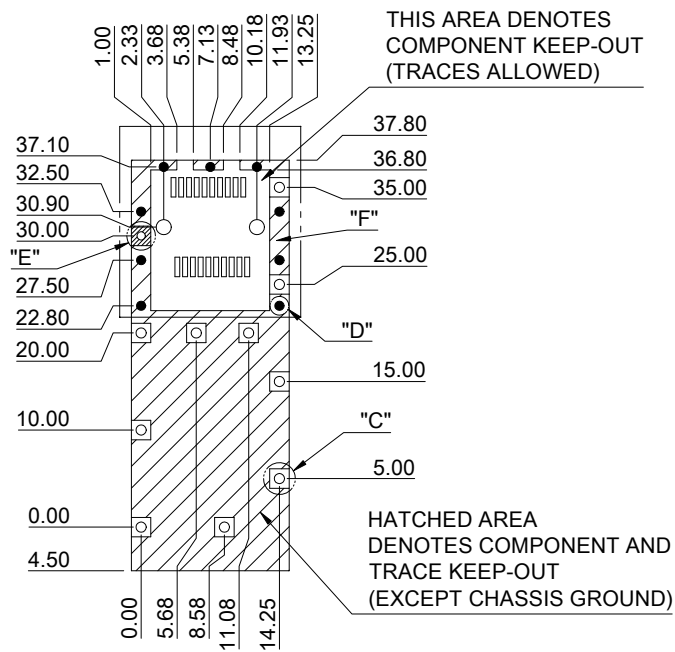
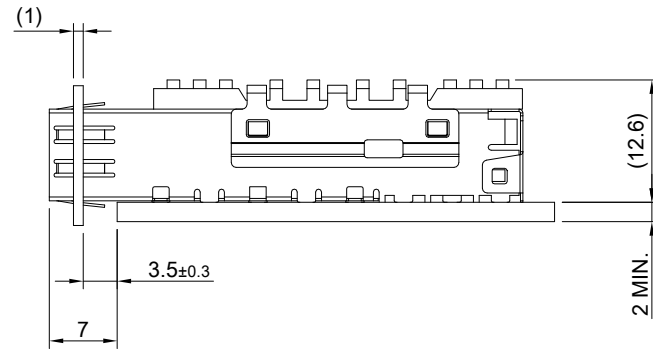
MATERIAL: RoHS Compliant
APPROVED: George Yang

TOLERANCE: Angle: ± 1°
X. ± 0.25 .X ± 0.20 .XX ± 0.15

DRAWN: Jun
DATE: 07/22/2020

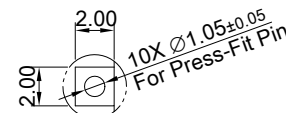


RECOMMENDED BEZEL CUT-OUT

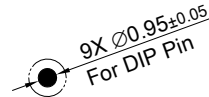


RECOMMENDED PCB LAYOUT
TOLERANCE: ±0.05

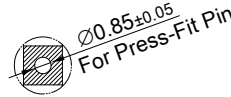
HATCHED AREA
DENOTES COMPONENT AND
TRACE KEEP-OUT
(EXCEPT CHASSIS GROUND)



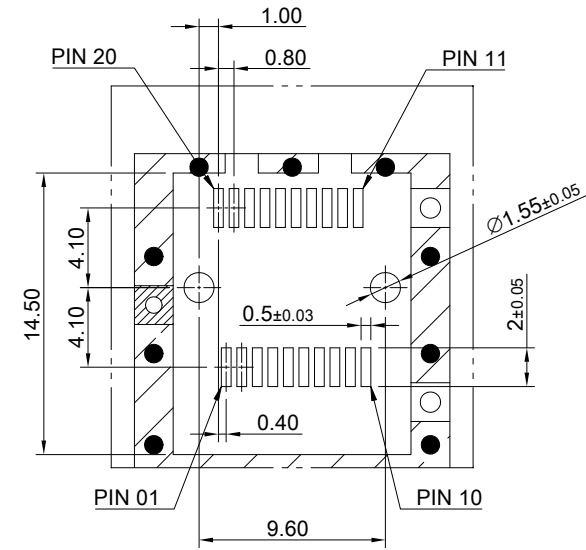
DETAIL C
SCALE 2:1



DETAIL D
SCALE 2:1

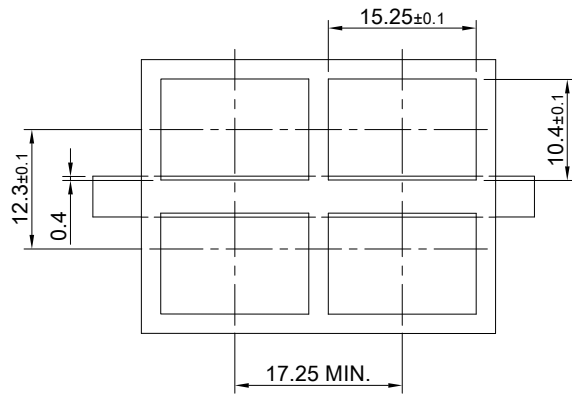


DETAIL E
SCALE 2:1

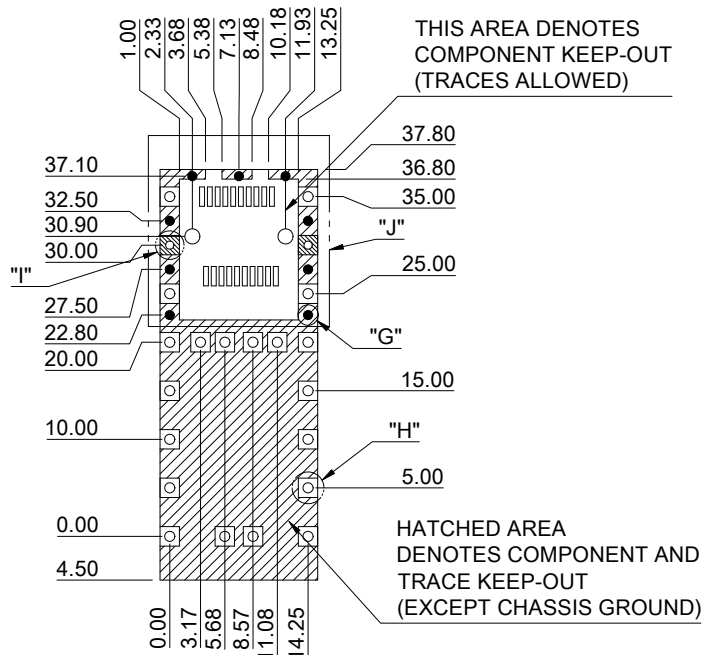


DETAIL F
SCALE 2:1

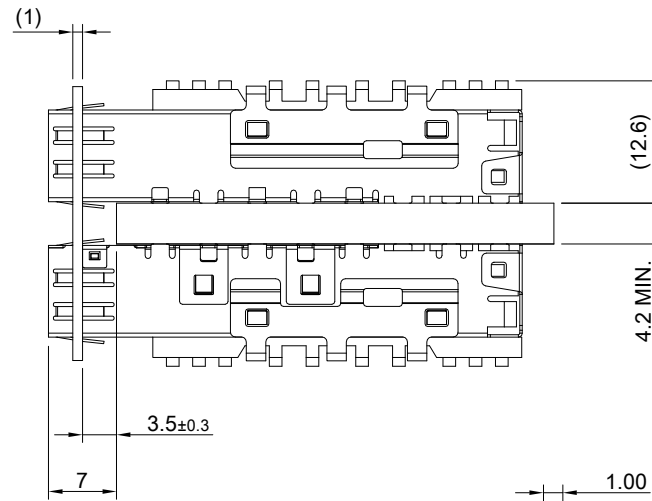
	TITLE: SFP+ Cage One-Piece Press Fit Pins w/ PCI Heat Sink		
	DWG#: R-SH-008020-6-K-03		SHEET: 2/3
	UNIT: mm	SCALE: A4 5:4	REV. C
	FINISH:		CHECKED: Gary Kang
THIRD ANGLE PROJECTION		MATERIAL: RoHS Compliant	APPROVED: George Yang
TOLERANCE: Angle: ± 1° X ± 0.15 .X ± 0.10 .XX ± 0.05		DRAWN: Jun	DATE: 07/22/2020



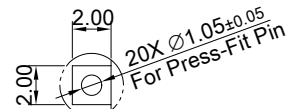
RECOMMENDED BEZEL CUT-OUT
BELLY TO BELLY APPLICATIONS



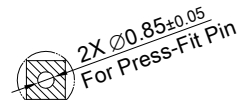
RECOMMENDED PCB LAYOUT
FOR BELLY TO BELLY MOUNTING
TOLERANCE: ± 0.05



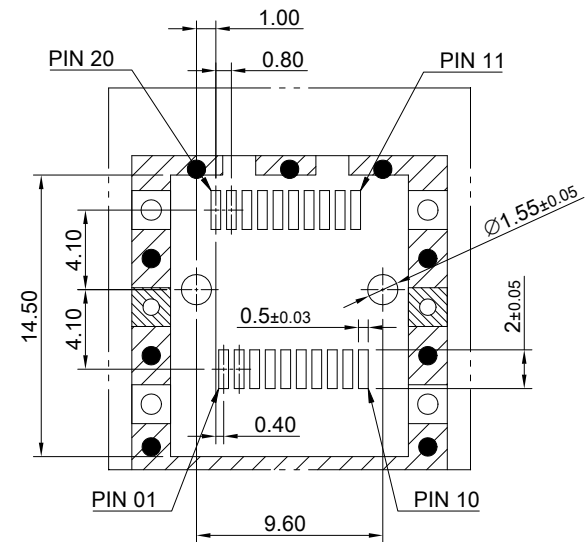
DETAIL G
SCALE 2:1



DETAIL H
SCALE 2:1



DETAIL I
SCALE 2:1



DETAIL J
SCALE 2:1



TITLE: SFP+ Cage One-Piece Press Fit Pins w/ PCI Heat Sink

DWG#: R-SH-008020-6-K-03

SHEET: 3/3
REV. C

UNIT: mm

SCALE: A4 5:4

FINISH:

CHECKED:

THIRD ANGLE PROJECTION

MATERIAL: RoHS Compliant

APPROVED: Gary Kang
George Yang

TOLERANCE: Angle: $\pm 1^\circ$
X: ± 0.15 .X: ± 0.10 .XX: ± 0.05

DRAWN: Jun

DATE: 07/22/2020