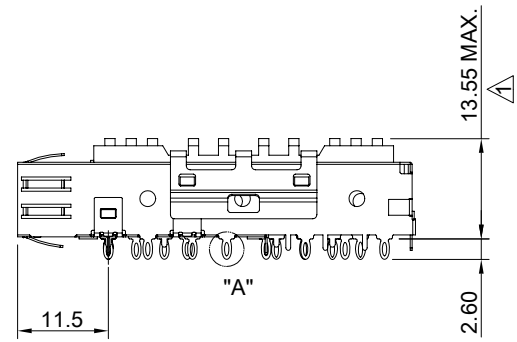
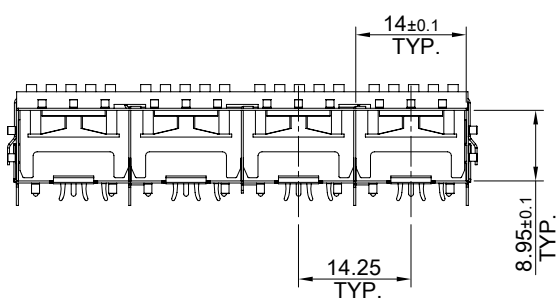
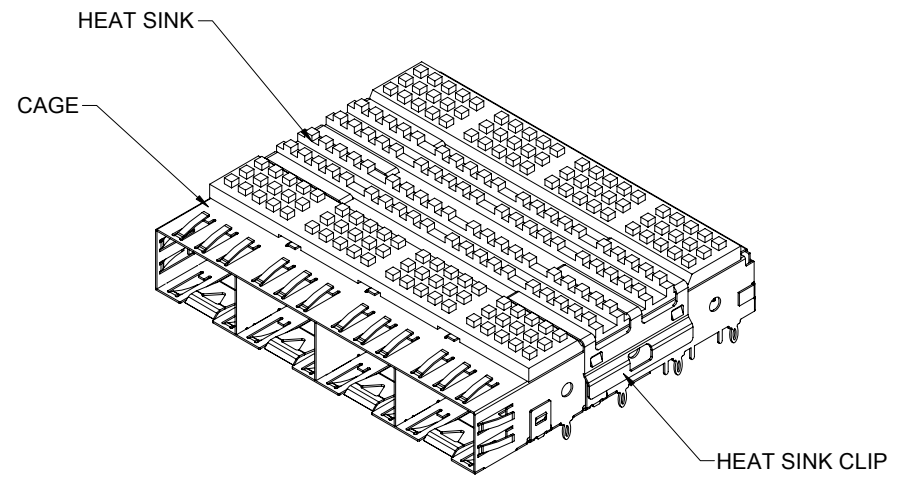


DETAIL A
SCALE 2:1



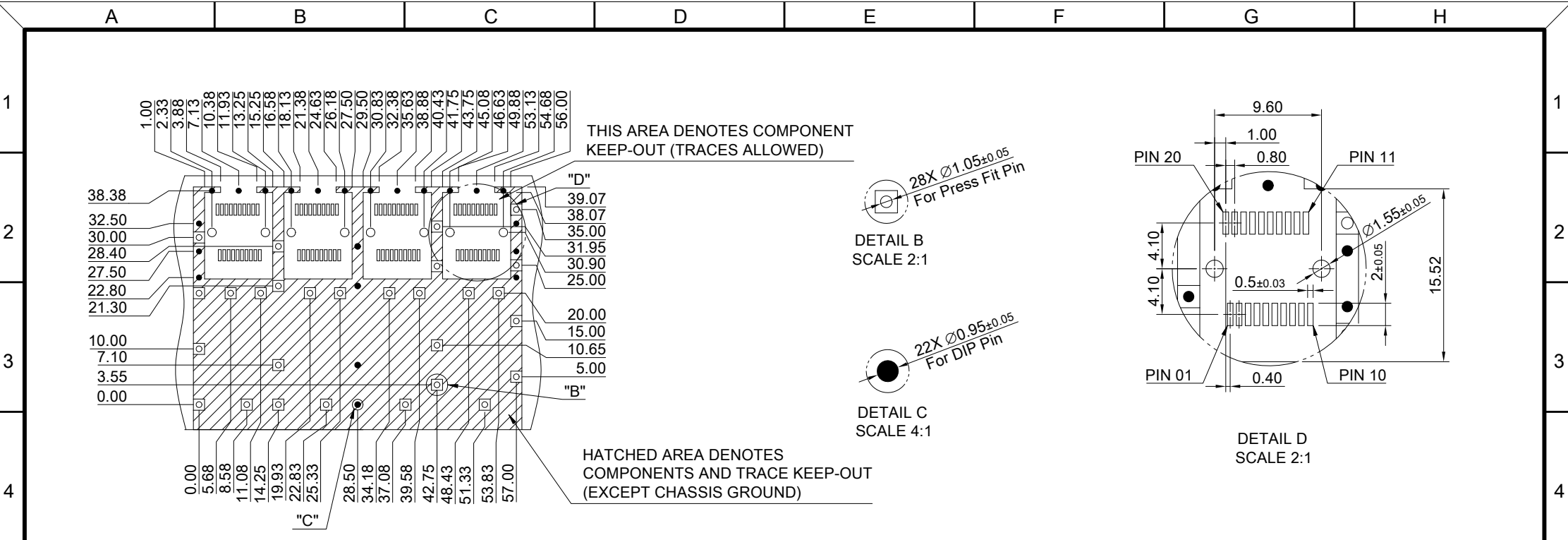
MATERIAL
 CAGE: NICKEL SILVER
 HEAT SINK: ALUMINUM
 HEAT SINK CLIP: STAINLESS STEEL

FINISH
 HEAT SINK: ANODE PROCESS

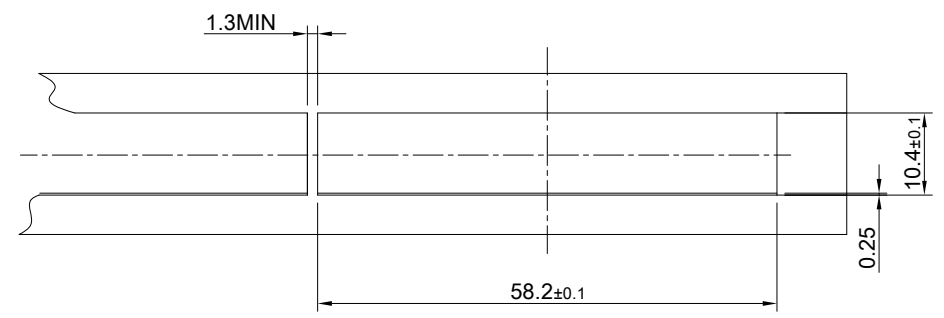
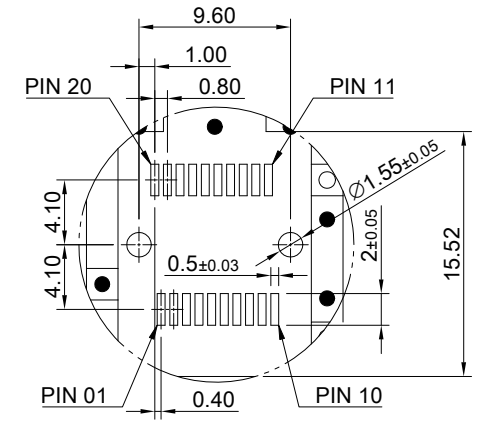
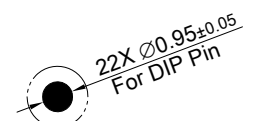
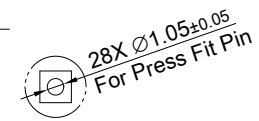
NOTE
 ▲ DIMENSION APPLIES WITH MODULE INSERTED IN CAGE



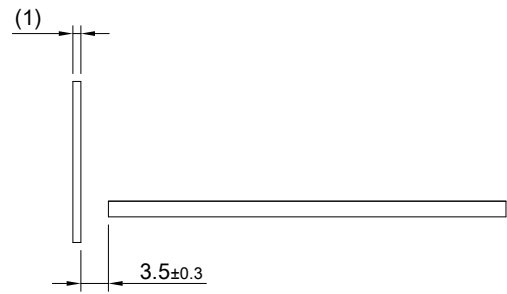
| | | | | |
|---|---------------|--------------------------|------------------|-----------------------|
| TITLE: SFP+ 1X4 Cage Assembly w/ PCI Heat Sink | | | | |
| DWG#: R-SH-008080-6-K-03 | | | SHEET: 1/2 | REV. B |
| UNIT: mm | SCALE: A4 1:1 | FINISH: | | CHECKED: Gary Kang |
| TOLERANCE: Angle: ± 1° X ± 0.25 .X ± 0.20 .XX ± 0.15 | | MATERIAL: RoHS Compliant | | APPROVED: George Yang |
| DRAWN: Jun | | | DATE: 08/19/2019 | |



RECOMMENDED PCB LAYOUT
TOLERANCE: ±0.05



RECOMMENDED BEZEL CUT-OUT



| | | | |
|------------------------|--|-----------------------|--------------------------|
| | TITLE: SFP+ 1X4 Cage Assembly w/ PCI Heat Sink | | |
| | DWG#: R-SH-008080-6-K-03 | | SHEET: 2/2 |
| | UNIT: mm | SCALE: A4 1:1 | FINISH: |
| | TOLERANCE: Angle: ±1° X ± 0.15 .X ± 0.10 .XX ± 0.05 | | MATERIAL: RoHS Compliant |
| THIRD ANGLE PROJECTION | | CHECKED: Gary Kang | REV. B |
| DRAWN: Jun | | APPROVED: George Yang | DATE: 08/19/2019 |