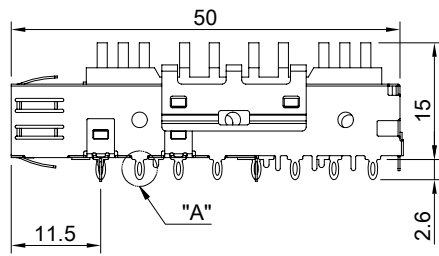
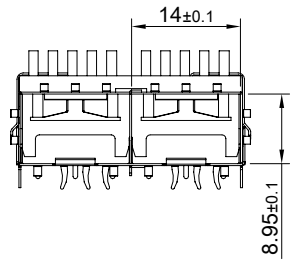
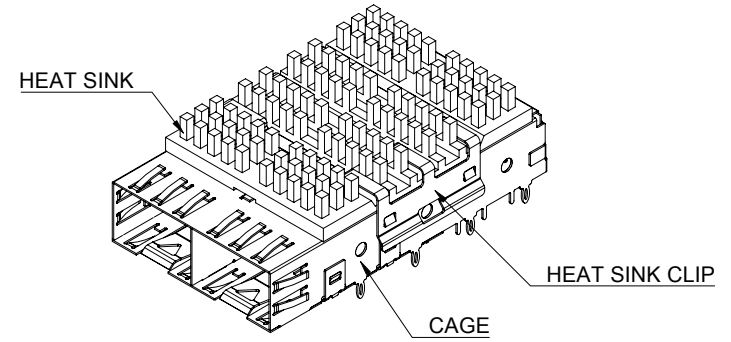



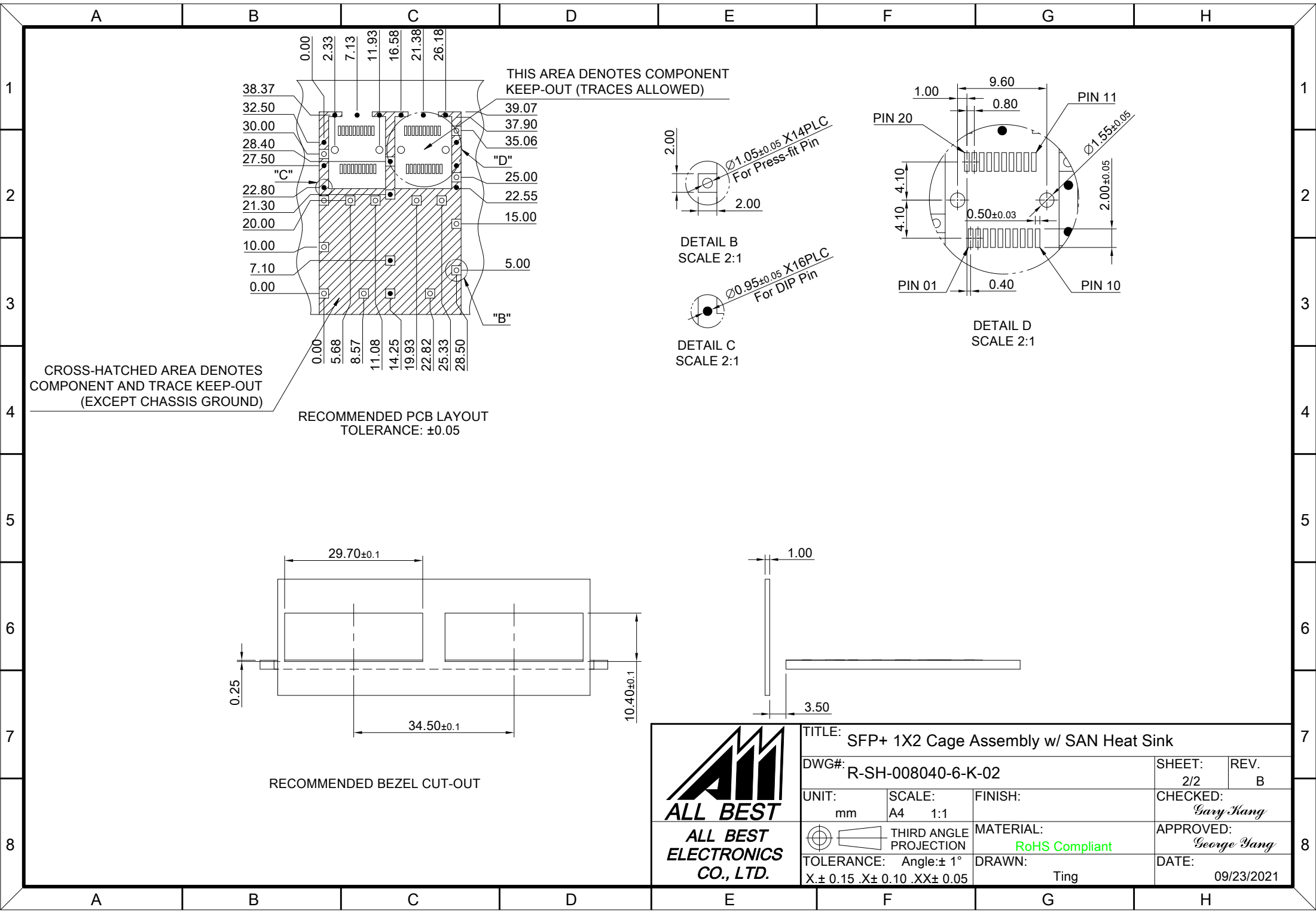
DETAIL A  
SCALE 4:1



MATERIAL  
CAGE: NICKEL SILVER  
HEAT SINK: ALUMINUM  
HEAT SINK CLIP: STAINLESS STEEL

FINISH  
HEAT SINK: ANODE PROCESS

 <b>ALL BEST</b> ALL BEST ELECTRONICS CO., LTD.	TITLE: SFP+ 1X2 Cage Assembly w/ SAN Heat Sink			SHEET: 1/2		REV. B
	DWG#: R-SH-008040-6-K-02			CHECKED: Gary Kang		
	UNIT: mm	SCALE: A4 1:1	FINISH:	APPROVED: George Yang		
	TOLERANCE: Angle: ± 1° X: ± 0.25 .X: ± 0.20 .XX: ± 0.15		MATERIAL: RoHS Compliant	DRAWN: Ting	DATE: 09/23/2021	

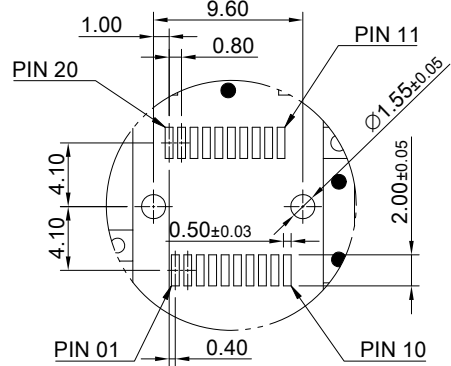
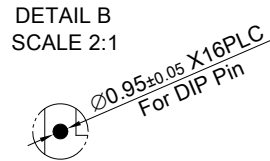
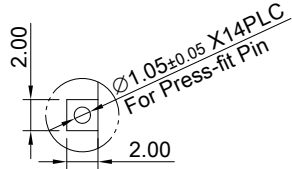


CROSS-HATCHED AREA DENOTES COMPONENT AND TRACE KEEP-OUT (EXCEPT CHASSIS GROUND)

RECOMMENDED PCB LAYOUT TOLERANCE: ±0.05

RECOMMENDED BEZEL CUT-OUT

THIS AREA DENOTES COMPONENT KEEP-OUT (TRACES ALLOWED)



<b>TITLE:</b> SFP+ 1X2 Cage Assembly w/ SAN Heat Sink			
<b>DWG#:</b> R-SH-008040-6-K-02		<b>SHEET:</b> 2/2	<b>REV.:</b> B
<b>UNIT:</b> mm	<b>SCALE:</b> A4 1:1	<b>FINISH:</b>	<b>CHECKED:</b> Gary Kang
<b>TOLERANCE:</b> X± 0.15 .X± 0.10 .XX± 0.05		<b>MATERIAL:</b> RoHS Compliant	<b>APPROVED:</b> George Yang
<b>THIRD ANGLE PROJECTION</b>		<b>DRAWN:</b> Ting	<b>DATE:</b> 09/23/2021