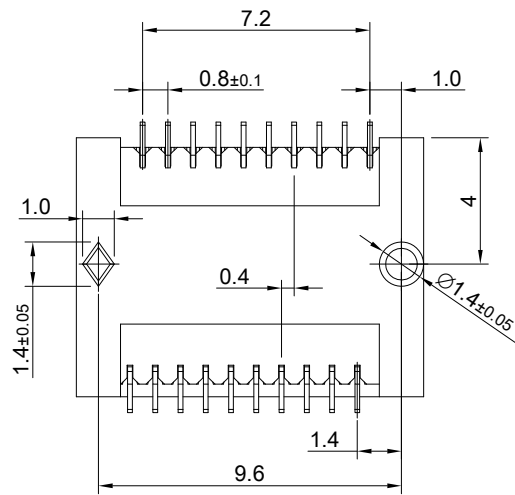


MATERIAL
 CONTACTS: COPPER ALLOY
 INSULATOR: LCP THERMOPLASTIC 94V-0
 INSULATOR COLOR: DEEP GRAY

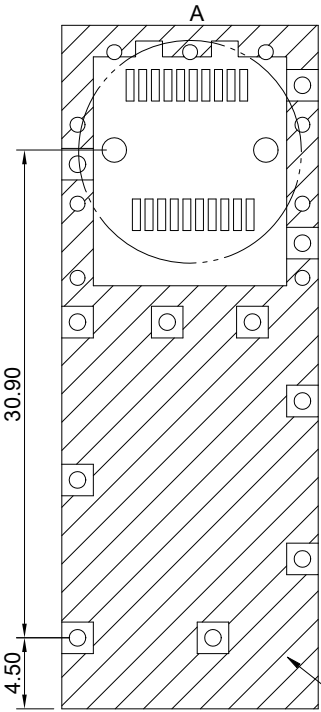
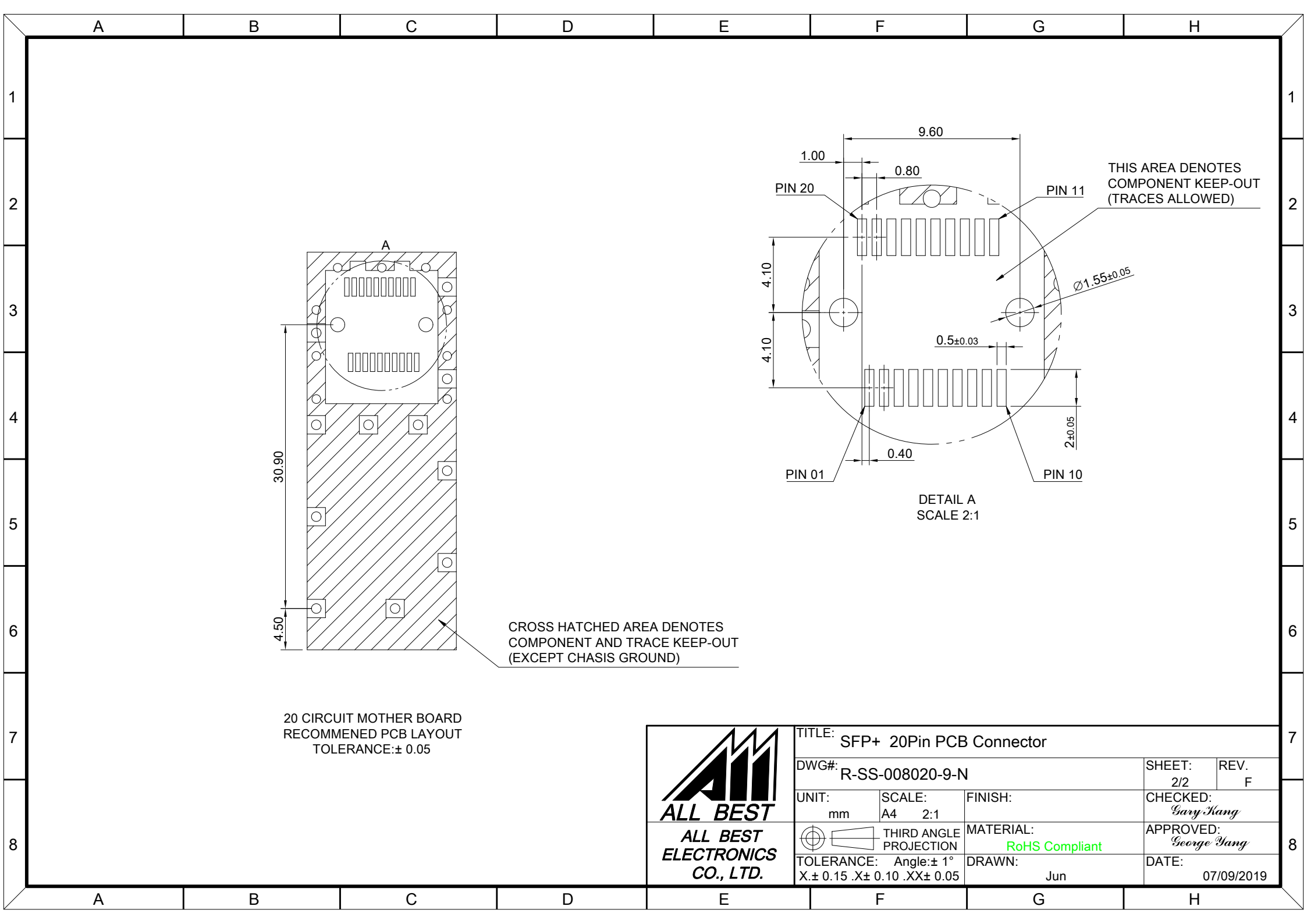
FINISH
 CONTACTS: 15 μ" MIN. GOLD ON MATING END;
 TIN ON TERMINATION END;
 ALL UNDERPLATED NICKEL

ELECTRICAL CHARACTERISTICS
 CONTACT CURRENT RATING: 0.5 AMPERE
 VOLTAGE RATING: 30 VAC
 CONTACT RESISTANCE: 35 mΩ MAX.
 DIELECTRIC WITHSTANDING VOLTAGE: 300 VAC

ENVIRONMENT
 OPERATION TEMPERATURE: -55°C TO +85°C
 SMT TEMPERATURE: 260°C



 ALL BEST ELECTRONICS CO., LTD.	TITLE: SFP+ 20Pin PCB Connector		SHEET: 1/2	REV. F
	DWG#: R-SS-008020-9-N		CHECKED: Gary Kang	
	UNIT: mm	SCALE: A4 4:1	FINISH:	APPROVED: George Yang
	TOLERANCE: Angle: ± 1° X ± 0.25 .X ± 0.20 .XX ± 0.15		MATERIAL: RoHS Compliant	DATE: 07/09/2019
THIRD ANGLE PROJECTION		DRAWN: Jun		



20 CIRCUIT MOTHER BOARD
RECOMMENED PCB LAYOUT
TOLERANCE: ± 0.05

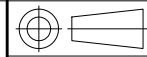
CROSS HATCHED AREA DENOTES
COMPONENT AND TRACE KEEP-OUT
(EXCEPT CHASIS GROUND)

THIS AREA DENOTES
COMPONENT KEEP-OUT
(TRACES ALLOWED)

DETAIL A
SCALE 2:1

		TITLE: SFP+ 20Pin PCB Connector	
		DWG#: R-SS-008020-9-N	
UNIT: mm	SCALE: A4 2:1	FINISH:	SHEET: 2/2
		MATERIAL: RoHS Compliant	REV: F
		APPROVED: George Yang	
TOLERANCE: Angle: ± 1° X: ± 0.15 .X: ± 0.10 .XX: ± 0.05		DRAWN: Jun	DATE: 07/09/2019

ALL BEST
ALL BEST
ELECTRONICS
CO., LTD.



THIRD ANGLE
PROJECTION

MATERIAL:
RoHS Compliant

CHECKED:
Gary Kang

APPROVED:
George Yang

DRAWN:
Jun

DATE:
07/09/2019