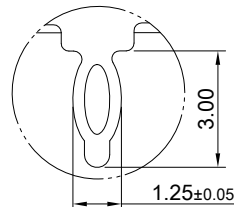
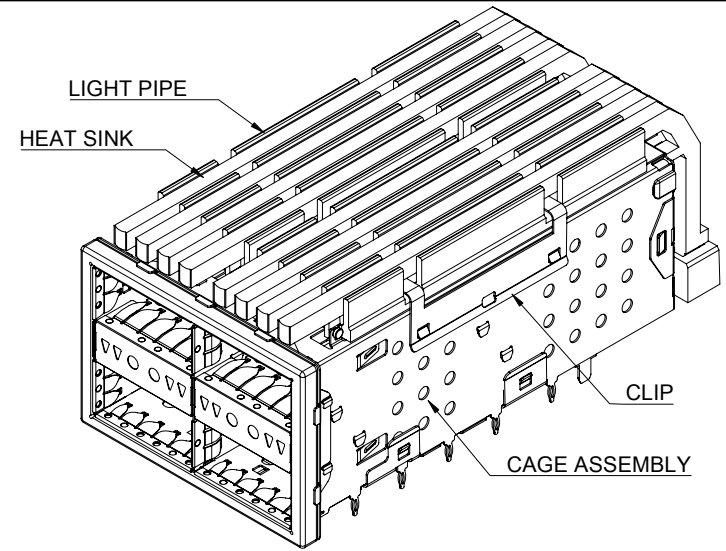


DETAIL B
SCALE 5:1



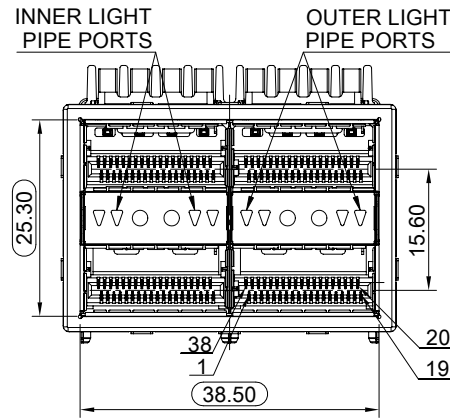
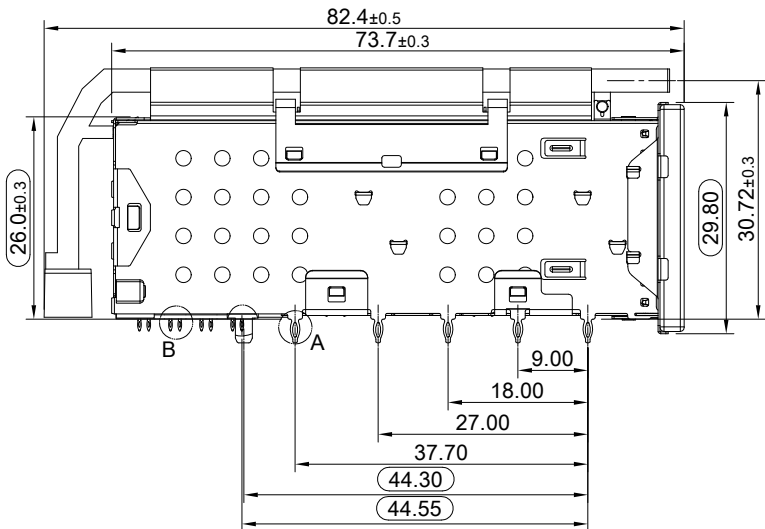
DETAIL A
SCALE 5:1



- MATERIAL**
 CAGE: NICKEL SILVER
 CONNECTOR HOUSING: THERMOPLASTIC, UL 94V-0
 EMI SPRING: STAINLESS STEEL
 CONTACTS: COPPER ALLOY
 EMI GASKET FLANGE: STAINLESS STEEL
 EMI GASKET: CONDUCTIVE ELASTOMER(UGTP)
 HEAT SINK: ALUMINUM
 HEAT SINK CLIP: STAINLESS STEEL
 LIGHT PIPE: PC
 LIGHT SHIELD: THERMOPLASTIC

- FINISH**
 HEAT SINK: ANODE PROCESS
 CONTACT: 15μ" MIN. GOLD ON MATING END;
 30μ" MIN. MATTE TIN ON TERMINAL END;
 ALL UNDERPLATED 50μ" MIN. NICKEL

- ELECTRICAL CHARACTERISTICS**
 CONTACT CURRENT RATING: 0.5AMPERE
 VOLTAGE RATING: 30VAC
 CONTACT RESISTANCE: 80 mΩ MAX.
 DIELECTRIC WITHSTANDING VOLTAGE: 300VAC



THIS PRINT IS
PRELIMINARY
 UNQUALIFIED PRODUCT
 CONTACT PRODUCT ENGINEERING
 BEFORE USING THIS PRINT



TITLE: Stacked QSFP+ Enhance 2x2 Assembly w/ Internal/ External Light Pipe & Heat Sink

DWG#: R-TR-QEL2-4CMLJ-AIO-4

SHEET: 1/3
 REV. REF.

UNIT: mm
 SCALE: A4 1:1

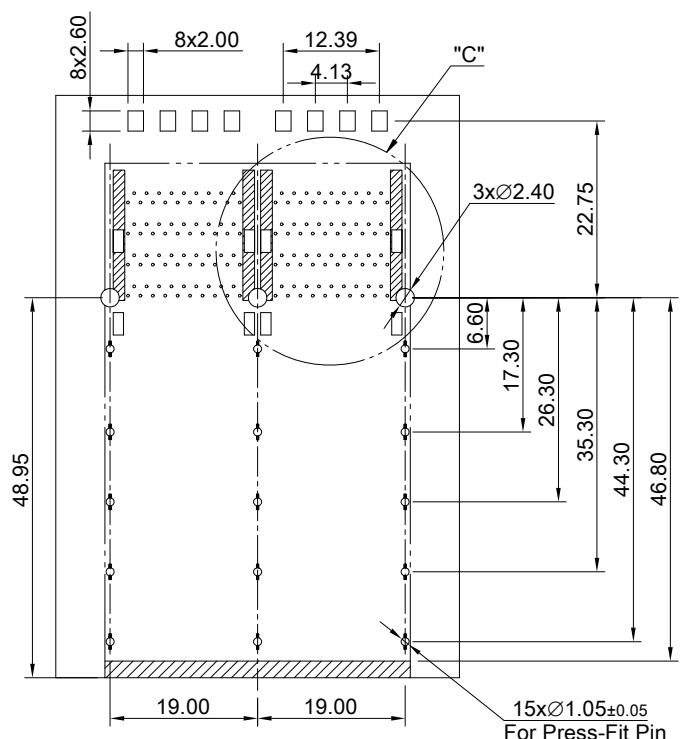
FINISH: CHECKED:

THIRD ANGLE PROJECTION

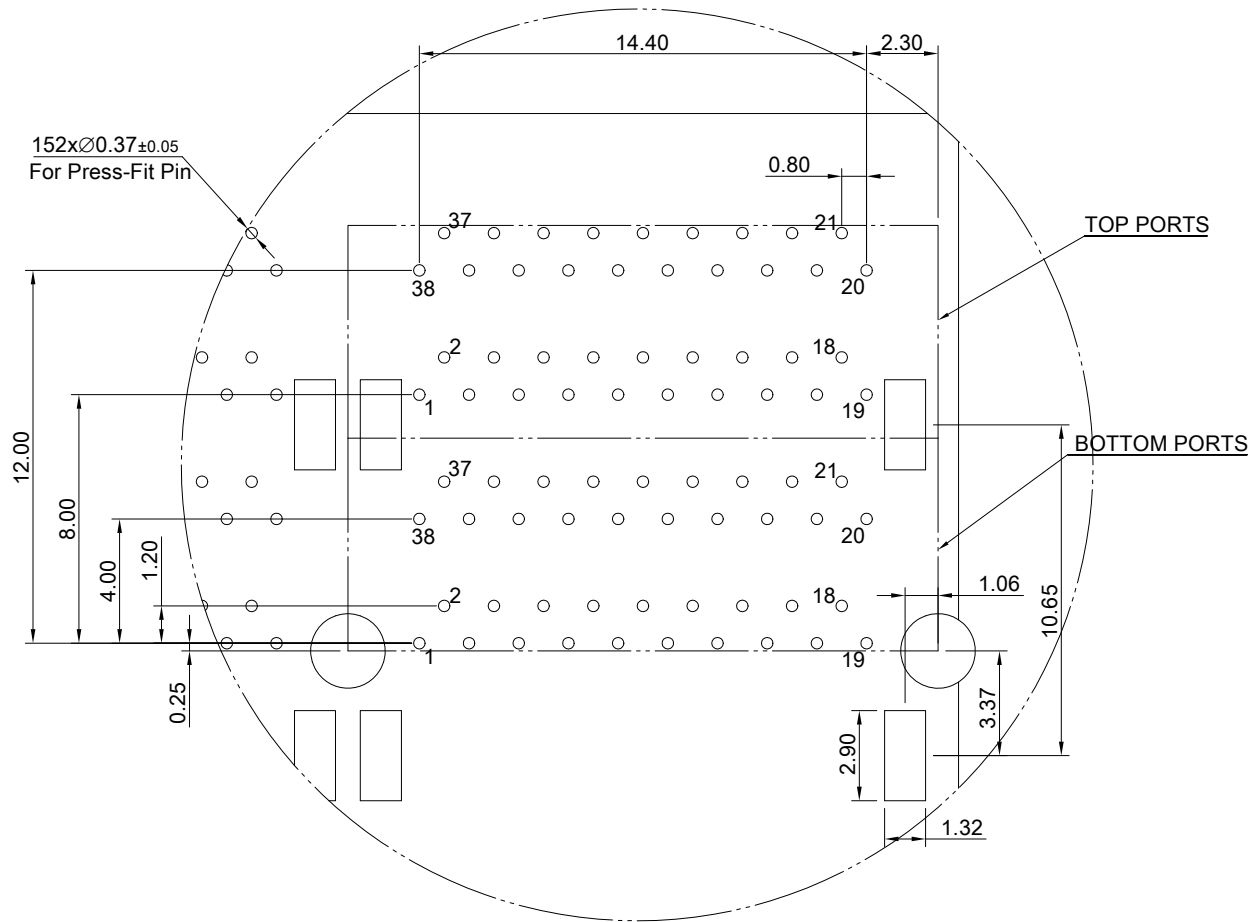
MATERIAL: RoHS Compliant
 APPROVED:

TOLERANCE: Angle: ± 1°
 X.±0.25 .X±0.20 .XX±0.15

DRAWN: Allen
 DATE: 03/13/2024



RECOMMENDED PCB LAYOUT
 TOLERANCE: ±0.05
 MINIMUM PCB THICKNESS OF 1.57MM



DETAIL C
 SCALE 4:1

THIS PRINT IS
PRELIMINARY
 UNQUALIFIED PRODUCT
 CONTACT PRODUCT ENGINEERING
 BEFORE USING THIS PRINT

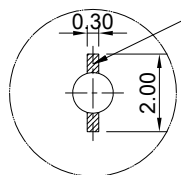


TITLE: Stacked QSFP+ Enhance 2x2 Assembly w/ Internal/ External Light Pipe & Heat Sink			
DWG#: R-TR-QEL2-4CMLJ-AIO-4		SHEET: 2/3	REV. REF.
UNIT: mm	SCALE: A4 1:1	FINISH:	CHECKED:
THIRD ANGLE PROJECTION		MATERIAL: RoHS Compliant	APPROVED:
TOLERANCE: Angle: ± 1° X: ±0.15 .X±0.1 .XX±0.05		DRAWN: Allen	DATE: 03/13/2024

A B C D E F G H

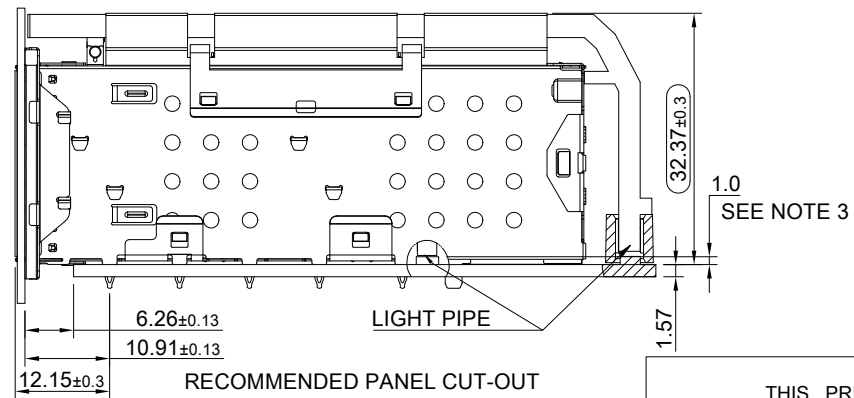
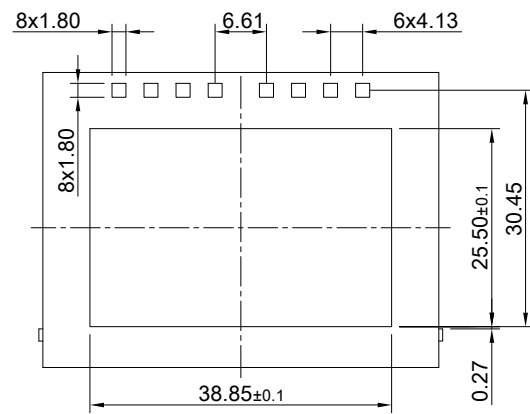
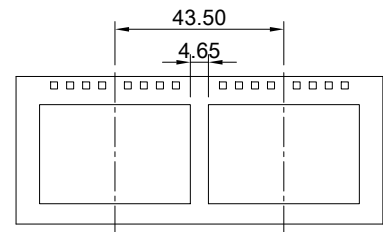
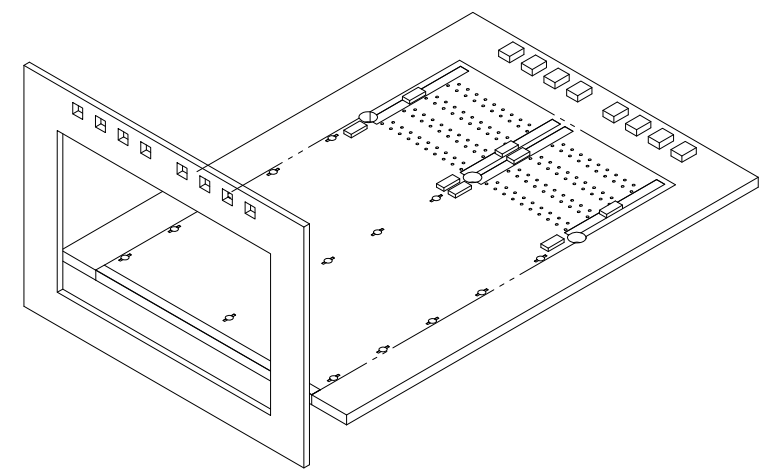
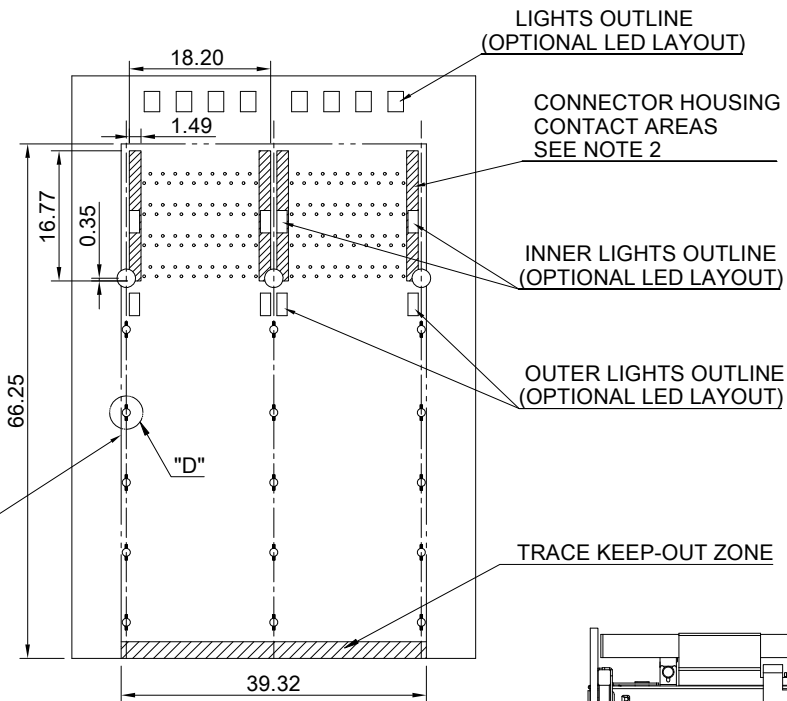
1
2
3
4
5
6
7
8

TRACE KEEP-OUT ZONE
AROUND PRESS-FIT TAIL HOLES



DETAIL D
SCALE 5:1

CONNECTOR AREA
SEE NOTE 1



THIS PRINT IS
PRELIMINARY
UNQUALIFIED PRODUCT
CONTACT PRODUCT ENGINEERING
BEFORE USING THIS PRINT

NOTES

1. THE ENTIRE AREA UNDER THE CONNECTOR CAGE IS A COMPONENT KEEP-OUT ZONE. THE AREA UNDER THE CONNECTOR MODULE IS A TRACE KEEP-OUT AREA.
2. HATCHED AREAS REPRESENT ZONES ON THE PCB THAT COME IN CONTACT WITH OR BE IN CLOSE PROXIMITY TO THE PLASTIC HOUSING OR THE CONNECTOR CAGE. INDICATED AREAS TO BE CONSIDERED TRACE FREE.
3. MIN. DISTANCE FROM THE TOP SIDE OF PCB TO LIGHT PIPE.
SMD LED HIGHLY RECOMMENDED: 0.8mm(MIN.)~1.2mm(MAX.).
THE VIEWING ANGLE SUGGESTED IS <60°



TITLE: Stacked QSFP+ Enhance 2x2 Assembly w/ Internal/ External Light Pipe & Heat Sink			
DWG#: R-TR-QEL2-4CMLJ-AIO-4		SHEET: 3/3	REV. REF.
UNIT: mm	SCALE: A4 1:1	FINISH:	CHECKED:
THIRD ANGLE PROJECTION		MATERIAL: RoHS Compliant	APPROVED:
TOLERANCE: Angle: ± 1° X. ± 0.15 .X ± 0.1 .XX ± 0.05		DRAWN: Allen	DATE: 03/13/2024

A B C D E F G H