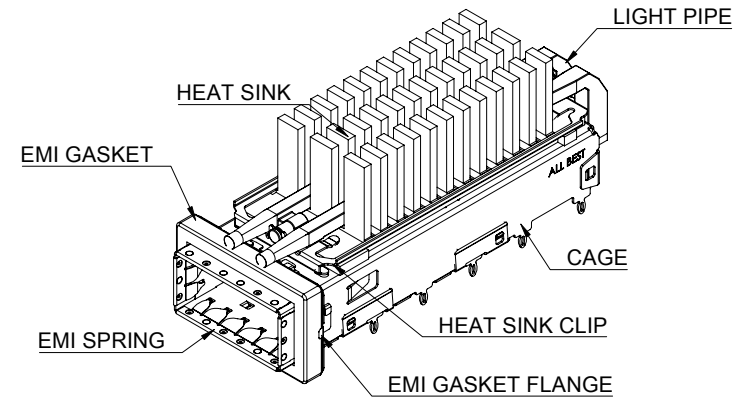
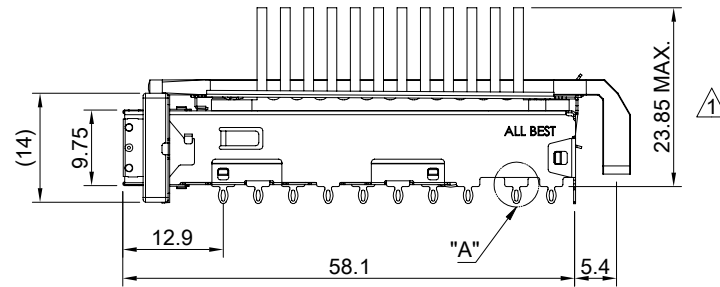
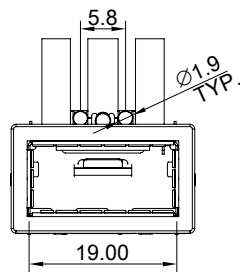


DETAIL A  
SCALE 5 : 1



MATERIAL  
 CAGE: NICKEL COPPER  
 HEAT SINK: ALUMINUM  
 LIGHT PIPE CLIP: STAINLESS STEEL  
 EMI SPRING: STAINLESS STEEL  
 EMI GASKET FLANGE: STAINLESS STEEL  
 EMI GASKET: CONDUCTIVE ELASTOMER  
 LIGHT PIPE: PC

FINISH  
 HEAT SINK: ANODE PROCESS

NOTE  
 ▲ DIMENSION APPLIES WITH MODULE INSERTED IN CAGE



TITLE: QSFP+ 1X1 Cage Assembly w/ Light Pipe & Heat Sink

DWG#: R-OR-Q1-4CGE3

UNIT: mm SCALE: A4 1:1

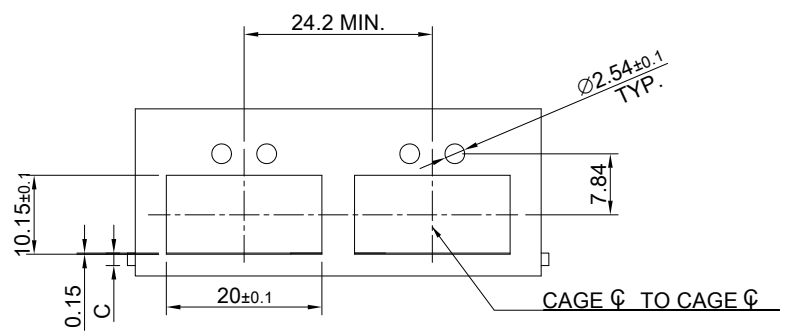
THIRD ANGLE PROJECTION

TOLERANCE: Angle: ± 1°  
 X.± 0.25 .X± 0.20 .XX± 0.15

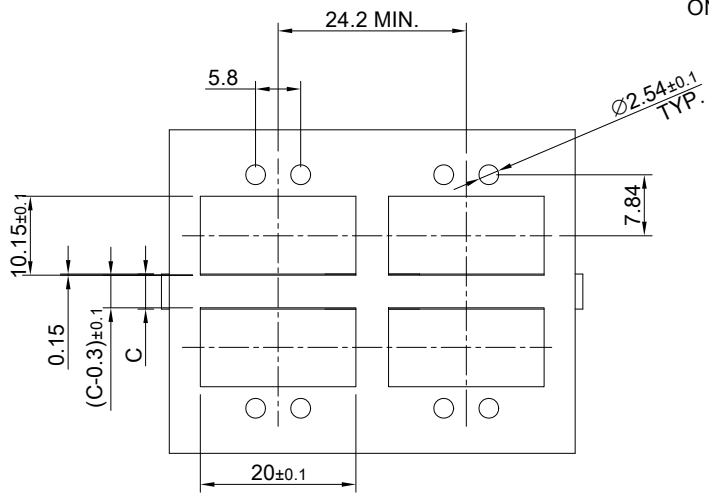
FINISH: SHEET: 1/4 REV. C  
 CHECKED: Gary Kang

MATERIAL: RoHS Compliant  
 APPROVED: George Yang

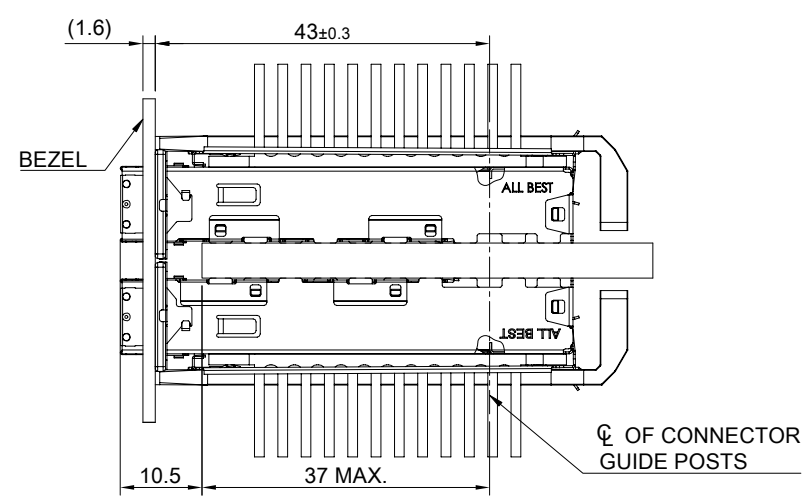
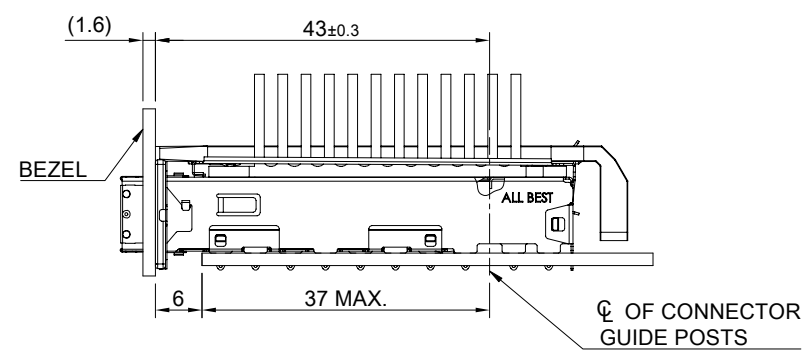
DRAWN: Joe DATE: 09/26/2023



ONE SIDED CONFIGURATION

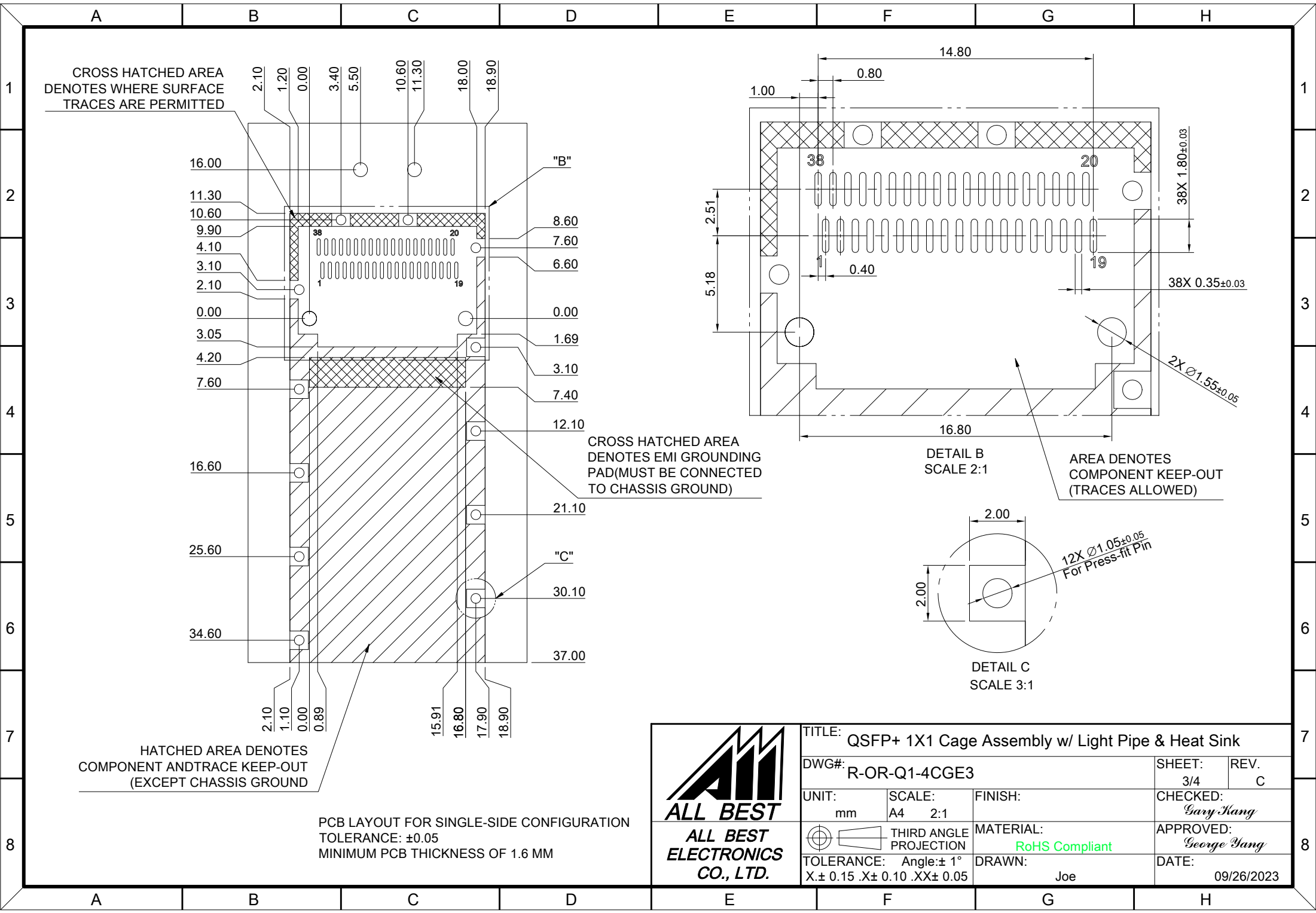


BELLY TO BELLY CONFIGURATION



C=THICKNESS OF PC BOARD  
 SINGLE SIDED=1.6MM(MIN)  
 DOUBLE SIDE=4.5MM(MIN)

	TITLE: QSFP+ 1X1 Cage Assembly w/ Light Pipe & Heat Sink			SHEET: 2/4		REV. C	
	DWG#: R-OR-Q1-4CGE3			CHECKED: Gary Kang		APPROVED: George Yang	
	UNIT: mm	SCALE: A4 1:1	FINISH:	MATERIAL: RoHS Compliant		DATE: 09/26/2023	
	TOLERANCE: X±0.15 .X±0.10 .XX±0.05		THIRD ANGLE PROJECTION	DRAWN: Joe			

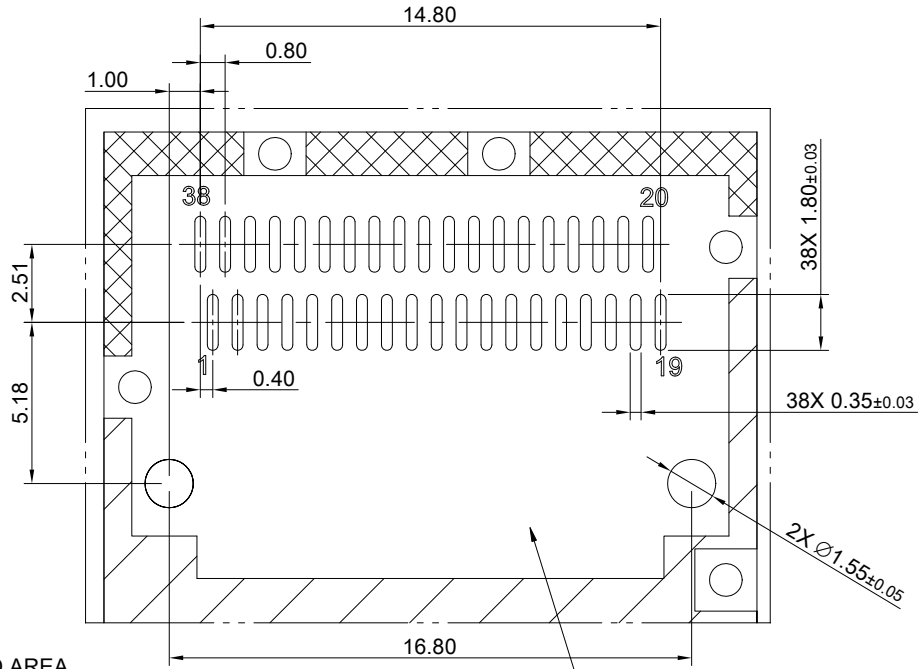


CROSS HATCHED AREA DENOTES WHERE SURFACE TRACES ARE PERMITTED

CROSS HATCHED AREA DENOTES EMI GROUNDING PAD (MUST BE CONNECTED TO CHASSIS GROUND)

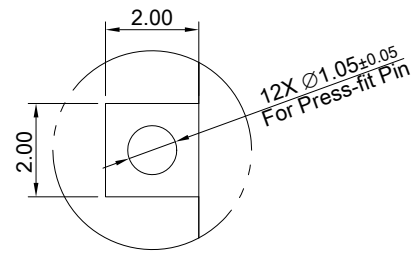
HATCHED AREA DENOTES COMPONENT AND TRACE KEEP-OUT (EXCEPT CHASSIS GROUND)

PCB LAYOUT FOR SINGLE-SIDE CONFIGURATION  
TOLERANCE: ±0.05  
MINIMUM PCB THICKNESS OF 1.6 MM



DETAIL B  
SCALE 2:1

AREA DENOTES COMPONENT KEEP-OUT (TRACES ALLOWED)



DETAIL C  
SCALE 3:1



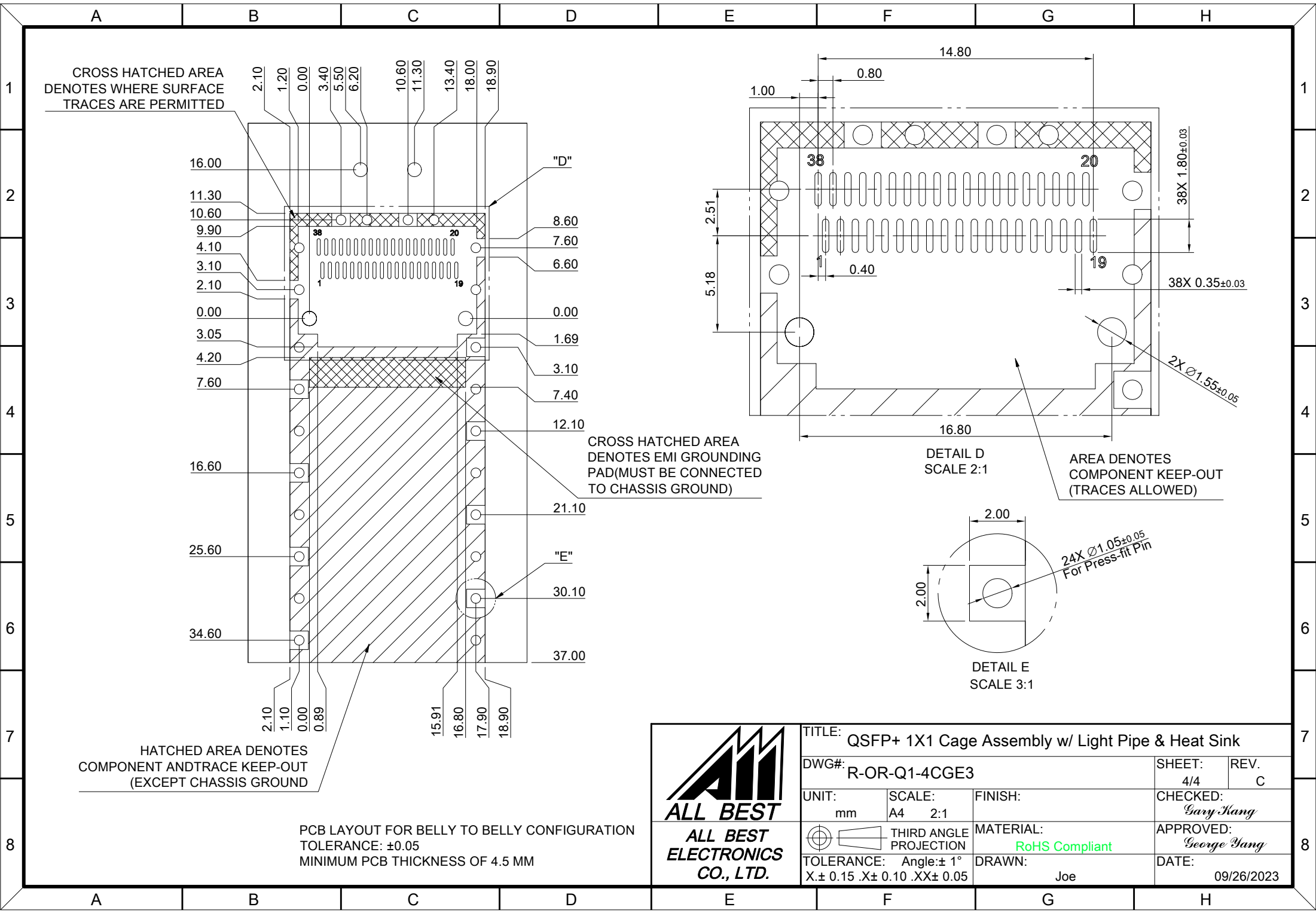
TITLE: QSFP+ 1X1 Cage Assembly w/ Light Pipe & Heat Sink

DWG#: R-OR-Q1-4CGE3

UNIT: mm	SCALE: A4 2:1	FINISH:	SHEET: 3/4	REV. C
CHECKED: <i>Gary Kang</i>			APPROVED: <i>George Yang</i>	

THIRD ANGLE PROJECTION	MATERIAL: RoHS Compliant	DATE: 09/26/2023
------------------------	-----------------------------	---------------------

TOLERANCE: Angle: ±1° X ± 0.15 .X ± 0.10 .XX ± 0.05	DRAWN: Joe	
--------------------------------------------------------	---------------	--



TITLE: QSFP+ 1X1 Cage Assembly w/ Light Pipe & Heat Sink			
DWG#: R-OR-Q1-4CGE3		SHEET: 4/4	REV. C
UNIT: mm	SCALE: A4 2:1	FINISH:	CHECKED: Gary Kang
THIRD ANGLE PROJECTION		MATERIAL: RoHS Compliant	APPROVED: George Yang
TOLERANCE: Angle: ±1° X ± 0.15 .X ± 0.10 .XX ± 0.05		DRAWN: Joe	DATE: 09/26/2023