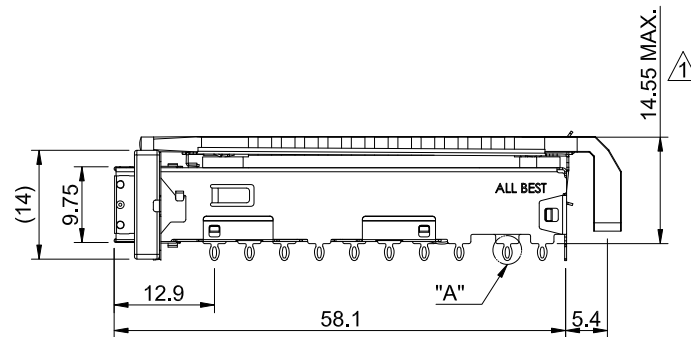
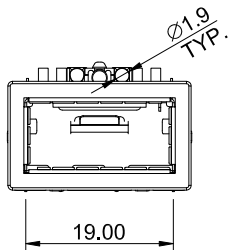
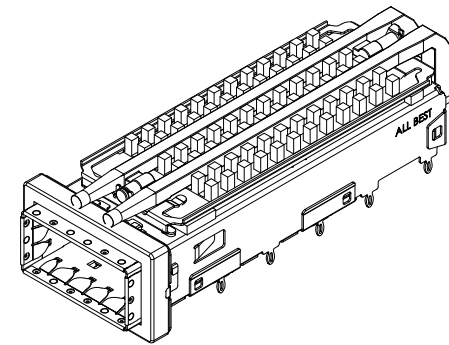



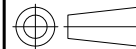
DETAIL A
SCALE 5:1

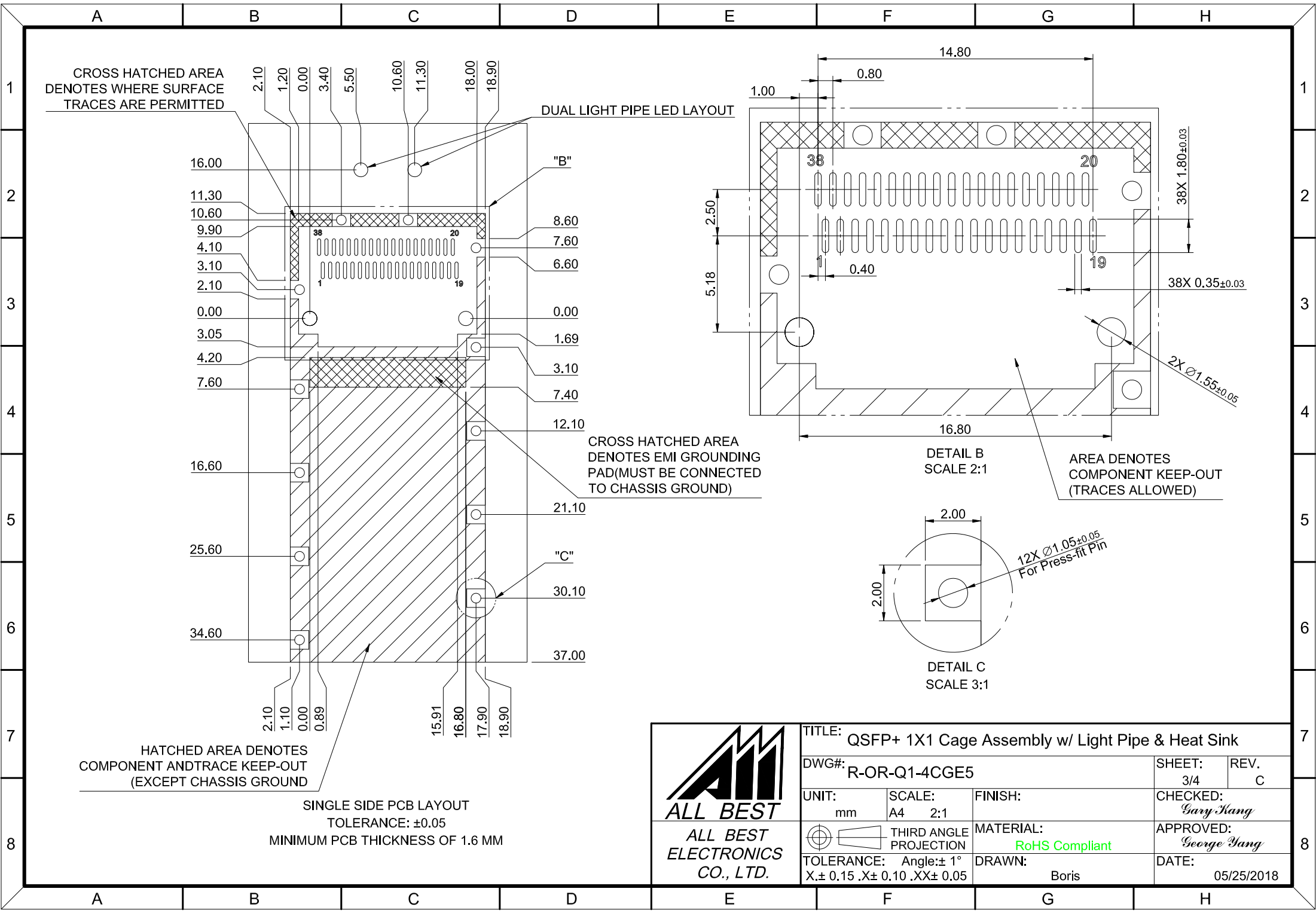


MATERIAL
 CAGE: NICKEL SILVER
 HEAT SINK: ALUMINUM
 HEAT SINK CLIP: STAINLESS STEEL
 EMI SPRING: STAINLESS STEEL
 EMI GASKET FLANGE: STAINLESS STEEL
 EMI GASKET: CONDUCTIVE ELASTOMER
 LIGHT PIPE: PC

FINISH
 HEAT SINK: ANODE PROCESS

NOTE
 ▲ DIMENSION APPLIES WITH MODULE INSERTED IN CAGE

 ALL BEST ALL BEST ELECTRONICS CO., LTD.	TITLE: QSFP+ 1X1 Cage Assembly w/ Light Pipe & Heat Sink		SHEET: 1/4		REV.: C	
	DWG#: R-OR-Q1-4CGE5		CHECKED: Gary Yang		APPROVED: George Yang	
	UNIT: mm	SCALE: A4 1:1	FINISH: RoHS Compliant		DATE: 05/25/2018	
	 THIRD ANGLE PROJECTION TOLERANCE: Angle: ± 1° X.± 0.25 .X± 0.20 .XX± 0.15		DRAWN: Boris			



HATCHED AREA DENOTES COMPONENT AND TRACE KEEP-OUT (EXCEPT CHASSIS GROUND)

SINGLE SIDE PCB LAYOUT
TOLERANCE: ±0.05
MINIMUM PCB THICKNESS OF 1.6 MM

DUAL LIGHT PIPE LED LAYOUT

CROSS HATCHED AREA DENOTES EMI GROUNDING PAD (MUST BE CONNECTED TO CHASSIS GROUND)

DETAIL B
SCALE 2:1

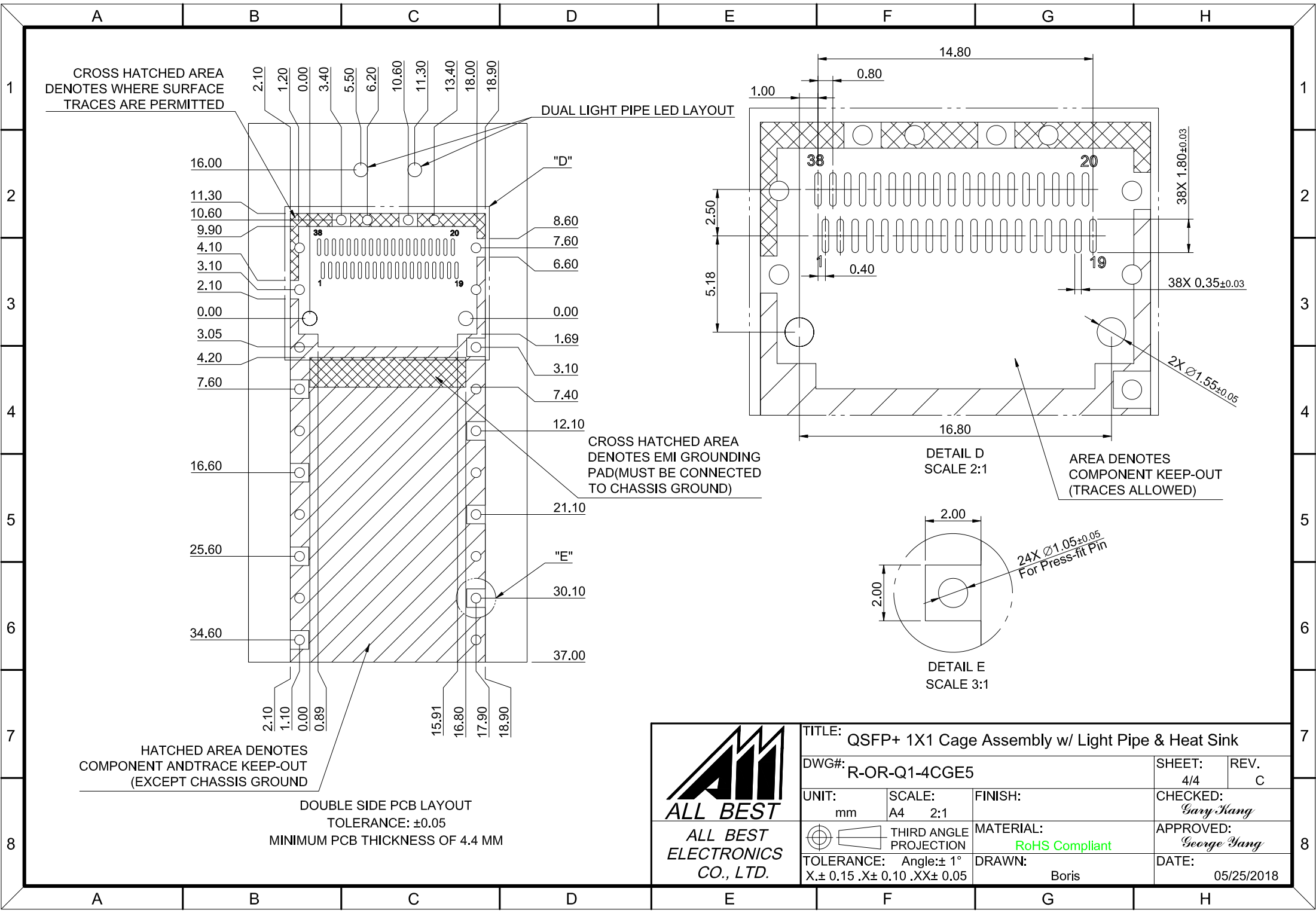
AREA DENOTES COMPONENT KEEP-OUT (TRACES ALLOWED)

DETAIL C
SCALE 3:1



ALL BEST ELECTRONICS CO., LTD.

TITLE: QSFP+ 1X1 Cage Assembly w/ Light Pipe & Heat Sink			
DWG#: R-OR-Q1-4CGE5		SHEET: 3/4	REV. C
UNIT: mm	SCALE: A4 2:1	FINISH:	CHECKED: Gary Yang
TOLERANCE: X±0.15 .X±0.10 .XX±0.05		MATERIAL: RoHS Compliant	APPROVED: George Yang
THIRD ANGLE PROJECTION		DRAWN: Boris	DATE: 05/25/2018



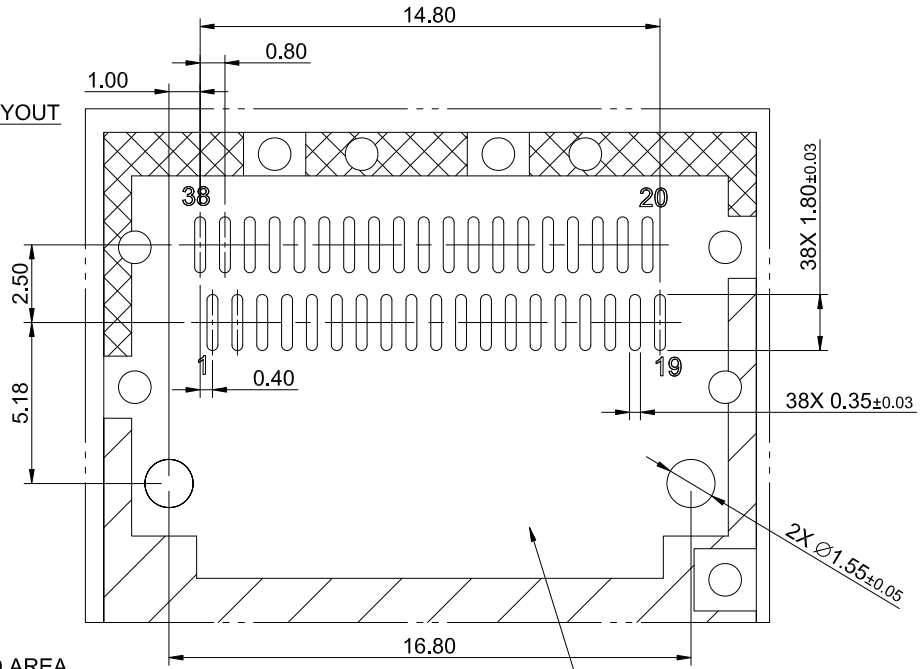
CROSS HATCHED AREA DENOTES WHERE SURFACE TRACES ARE PERMITTED

DUAL LIGHT PIPE LED LAYOUT

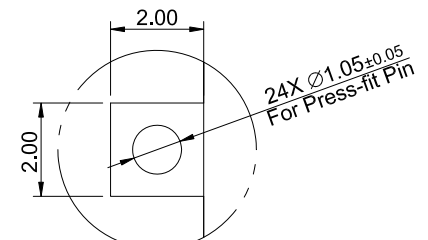
CROSS HATCHED AREA DENOTES EMI GROUNDING PAD (MUST BE CONNECTED TO CHASSIS GROUND)

HATCHED AREA DENOTES COMPONENT AND TRACE KEEP-OUT (EXCEPT CHASSIS GROUND)

DOUBLE SIDE PCB LAYOUT
TOLERANCE: ±0.05
MINIMUM PCB THICKNESS OF 4.4 MM



DETAIL D
SCALE 2:1



DETAIL E
SCALE 3:1



TITLE: QSFP+ 1X1 Cage Assembly w/ Light Pipe & Heat Sink

DWG#: R-OR-Q1-4CGE5

UNIT: mm	SCALE: A4 2:1	FINISH:	SHEET: 4/4	REV. C
THIRD ANGLE PROJECTION			CHECKED: <i>Gary Yang</i>	

TOLERANCE: X.± 0.15 .X± 0.10 .XX± 0.05	ANGLE: ± 1°	MATERIAL: RoHS Compliant	APPROVED: <i>George Yang</i>	
---	----------------	-----------------------------	---------------------------------	--

DRAWN: Boris	DATE: 05/25/2018			
-----------------	---------------------	--	--	--