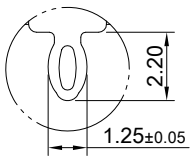
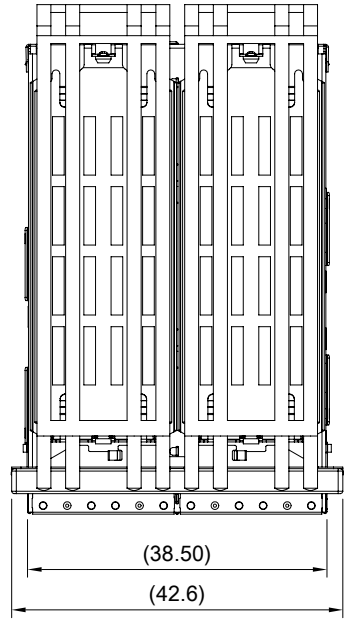
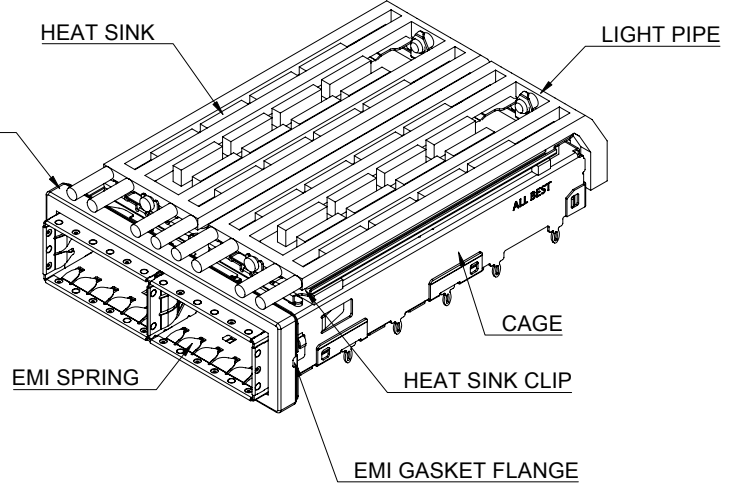
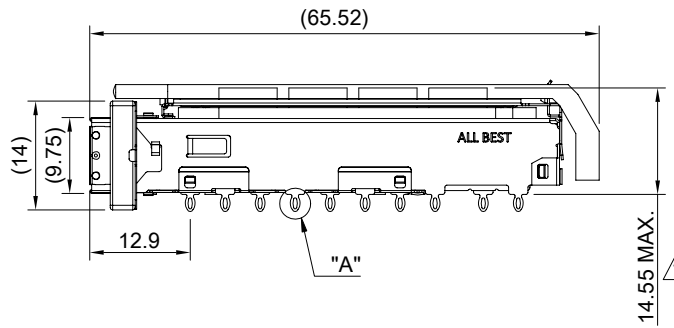
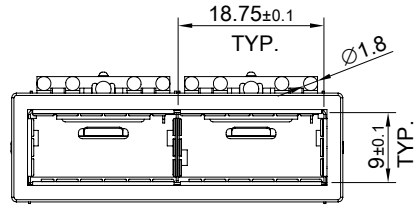


A B C D E F G H

1  
2  
3  
4  
5  
6  
7  
8



DETAIL A  
SCALE 4:1



MATERIAL  
 CAGE: NICKEL SILVER  
 EMI SPRING: STAINLESS STEEL  
 EMI GASKET FLANGE: STAINLESS STEEL  
 EMI GASKET: CONDUCTIVE ELASTOMER  
 HEAT SINK: ALUMINUM  
 HEAT SINK CLIP: STAINLESS STEEL  
 LIGHT PIPE: PC

FINISH  
 HEAT SINK: ANODE PROCESS

NOTE  
 ▲ DIMENSION APPLIES WITH MODULE INSERTED IN CAGE

THIS PRINT IS  
**PRELIMINARY**  
 UNQUALIFIED PRODUCT  
 CONTACT PRODUCT ENGINEERING  
 BEFORE USING THIS PRINT

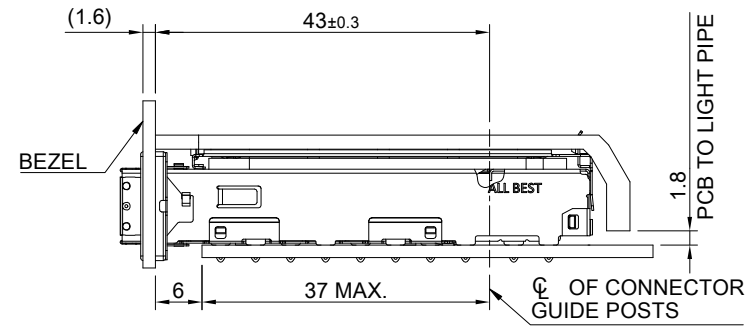
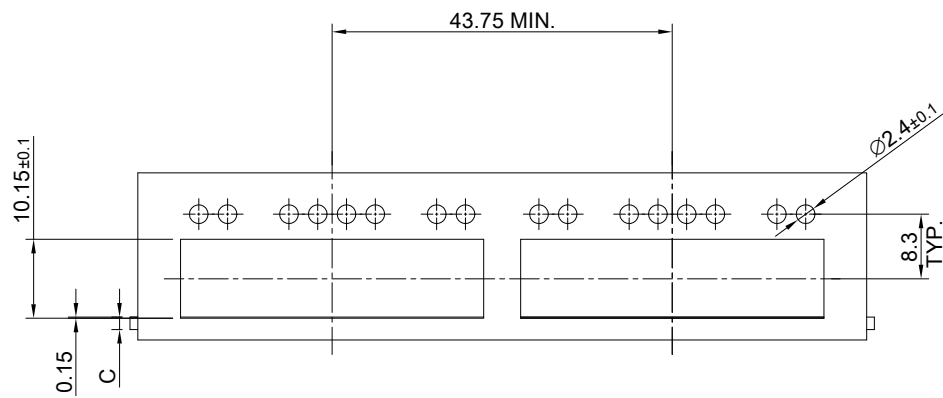


TITLE: QSFP56 1X2 Cage Assembly w/ Light Pipe & PCI Heat Sink			
DWG#: R-OR-DZQ2-4CGEG-MK		SHEET: 1/4	REV. REF
UNIT: mm	SCALE: A4 1:1	CHECKED:	
THIRD ANGLE PROJECTION		APPROVED:	
TOLERANCE: Angle: ± 1°		MATERIAL: RoHS Compliant	DATE:
X.± 0.25 .X± 0.20 .XX± 0.15		Drawn: Pohsiung	3/14/2024

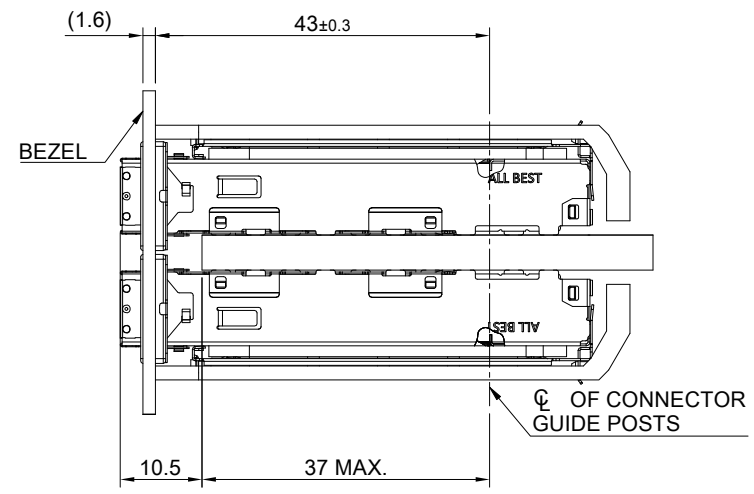
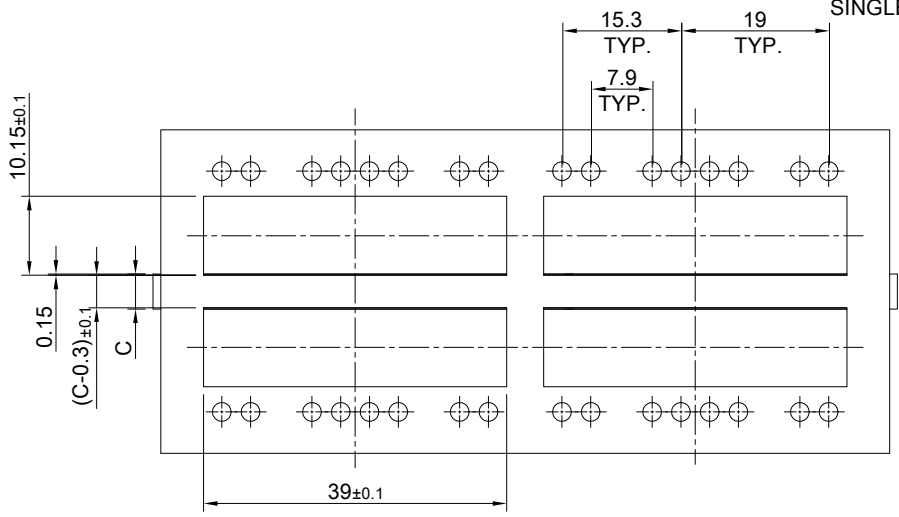
A B C D E F G H

A B C D E F G H

1  
2  
3  
4  
5  
6  
7  
8



SINGLE-SIDE CONFIGURATION



BELLY TO BELLY CONFIGURATION

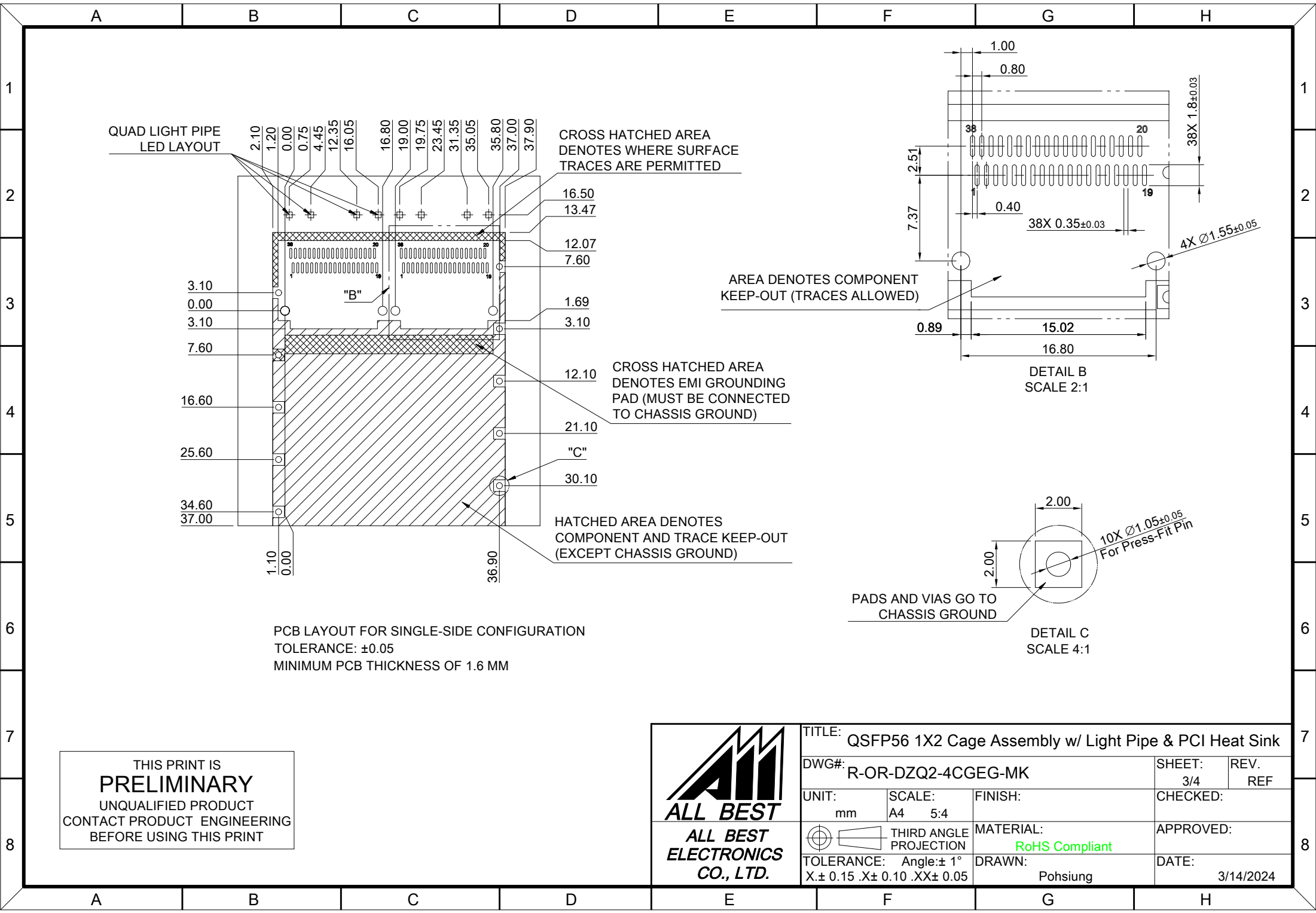
C = THICKNESS OF PC BOARD  
 SINGLE-SIDE = 1.6MM (MIN.)  
 BELLY TO BELLY = 4.5MM (MIN.)

THIS PRINT IS  
**PRELIMINARY**  
 UNQUALIFIED PRODUCT  
 CONTACT PRODUCT ENGINEERING  
 BEFORE USING THIS PRINT





TITLE: QSFP56 1X2 Cage Assembly w/ Light Pipe & PCI Heat Sink			
DWG#: R-OR-DZQ2-4CGEG-MK		SHEET: 2/4	REV. REF
UNIT: mm	SCALE: A4 1:1	CHECKED:	
THIRD ANGLE PROJECTION		APPROVED:	
TOLERANCE: Angle: ± 1°		MATERIAL: RoHS Compliant	DATE: 3/14/2024
X.± 0.15 .X± 0.10 .XX± 0.05		DRAWN: Pohsiung	

A B C D E F G H

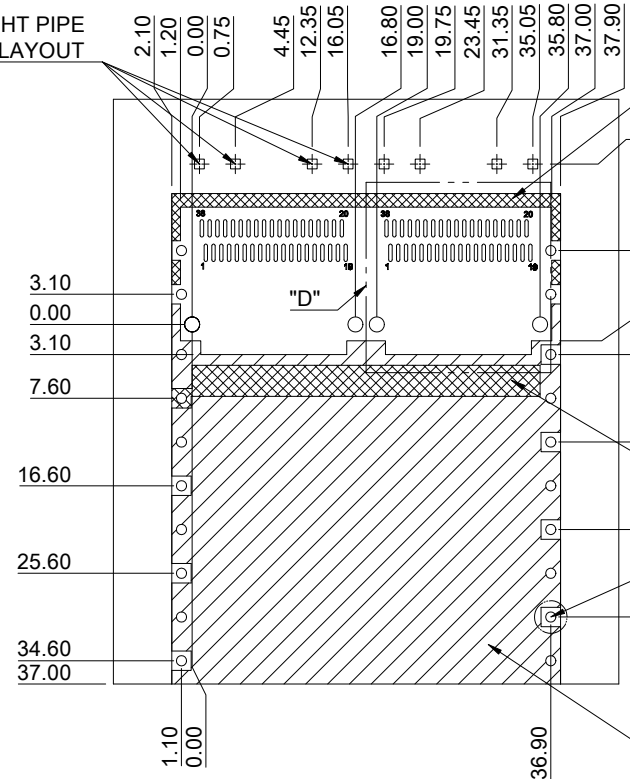


PCB LAYOUT FOR SINGLE-SIDE CONFIGURATION  
 TOLERANCE: ±0.05  
 MINIMUM PCB THICKNESS OF 1.6 MM

THIS PRINT IS  
**PRELIMINARY**  
 UNQUALIFIED PRODUCT  
 CONTACT PRODUCT ENGINEERING  
 BEFORE USING THIS PRINT

 <b>ALL BEST</b> <b>ELECTRONICS</b> <b>CO., LTD.</b>	<b>TITLE:</b> QSFP56 1X2 Cage Assembly w/ Light Pipe & PCI Heat Sink		<b>SHEET:</b> 3/4		<b>REV. REF</b>	
	<b>DWG#:</b> R-OR-DZQ2-4CGEG-MK		<b>CHECKED:</b>		<b>APPROVED:</b>	
<b>UNIT:</b> mm	<b>SCALE:</b> A4 5:4	<b>FINISH:</b>		<b>MATERIAL:</b> RoHS Compliant		
 <b>THIRD ANGLE PROJECTION</b>		<b>MATERIAL:</b> RoHS Compliant		<b>DATE:</b> 3/14/2024		
<b>TOLERANCE:</b> Angle: ± 1° X ± 0.15 .X ± 0.10 .XX ± 0.05		<b>DRAWN:</b> Pohsiung		<b>DATE:</b> 3/14/2024		

QUAD LIGHT PIPE  
LED LAYOUT



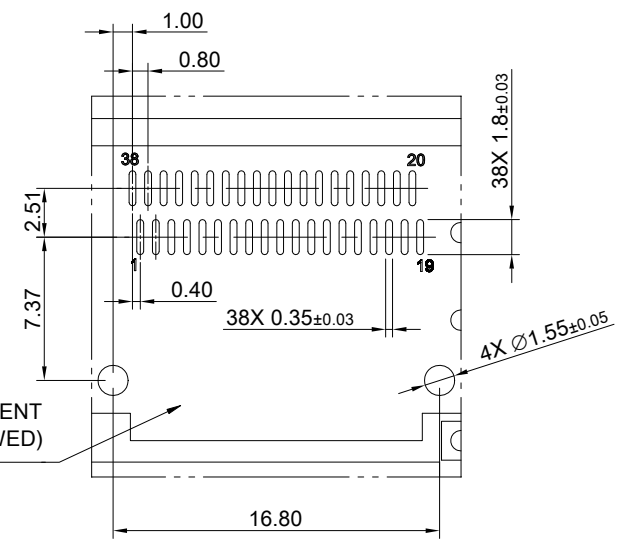
CROSS HATCHED AREA  
DENOTES WHERE SURFACE  
TRACES ARE PERMITTED

AREA DENOTES COMPONENT  
KEEP-OUT (TRACES ALLOWED)

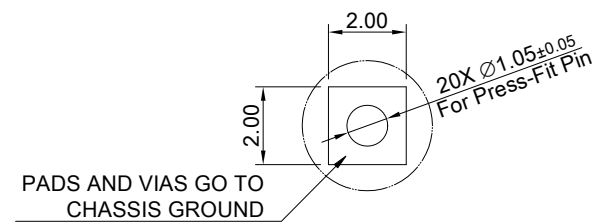
CROSS HATCHED AREA  
DENOTES EMI GROUNDING  
PAD (MUST BE CONNECTED  
TO CHASSIS GROUND)

HATCHED AREA DENOTES  
COMPONENT AND TRACE KEEP-OUT  
(EXCEPT CHASSIS GROUND)

PCB LAYOUT FOR BELLY TO BELLY CONFIGURATION  
TOLERANCE:  $\pm 0.05$   
MINIMUM PCB THICKNESS OF 4.5 MM



DETAIL D  
SCALE 2:1



DETAIL E  
SCALE 4:1

PADS AND VIAS GO TO  
CHASSIS GROUND

THIS PRINT IS  
**PRELIMINARY**  
UNQUALIFIED PRODUCT  
CONTACT PRODUCT ENGINEERING  
BEFORE USING THIS PRINT



TITLE: QSFP56 1X2 Cage Assembly w/ Light Pipe & PCI Heat Sink

DWG#: R-OR-DZQ2-4CGEG-MK SHEET: 4/4 REV. REF

UNIT: mm SCALE: A4 5:4 FINISH: CHECKED:

MATERIAL: RoHS Compliant APPROVED:

TOLERANCE: X:  $\pm 0.15$  .X:  $\pm 0.10$  .XX:  $\pm 0.05$  Angle:  $\pm 1^\circ$  DRAWN: Pohsiung DATE: 3/14/2024