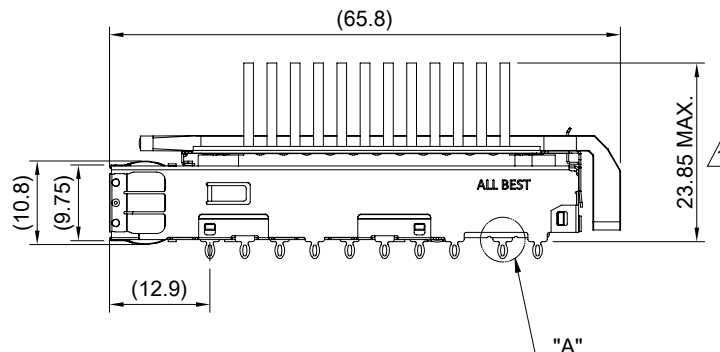
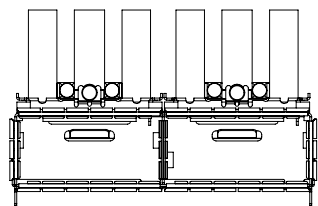
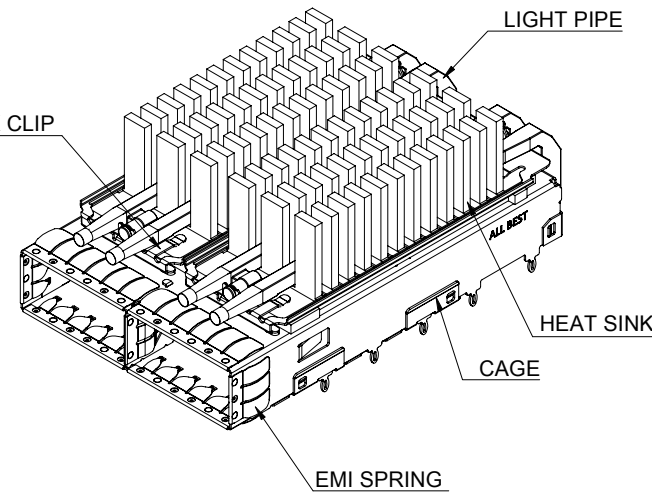



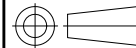
DETAIL A
SCALE 5:1

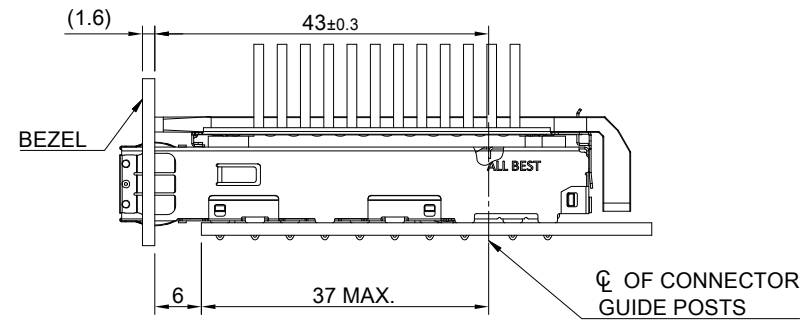
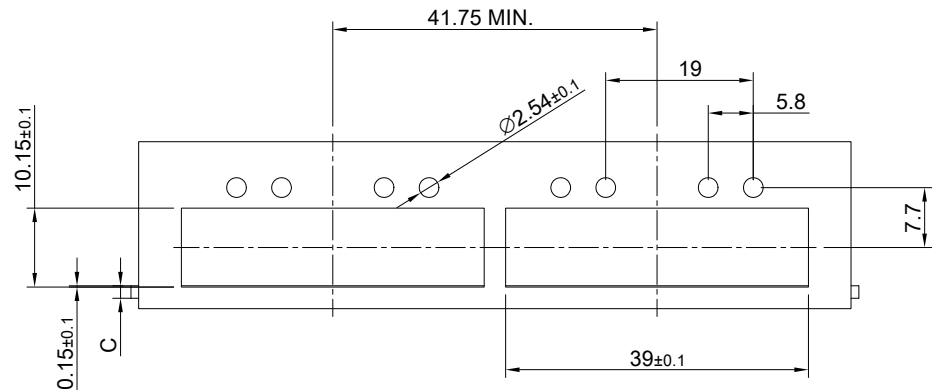


MATERIAL
 CAGE: NICKEL SILVER
 HEAT SINK: ALUMINUM
 HEAT SINK CLIP: STAINLESS STEEL
 EMI SPRING: STAINLESS STEEL
 LIGHT PIPE: PC

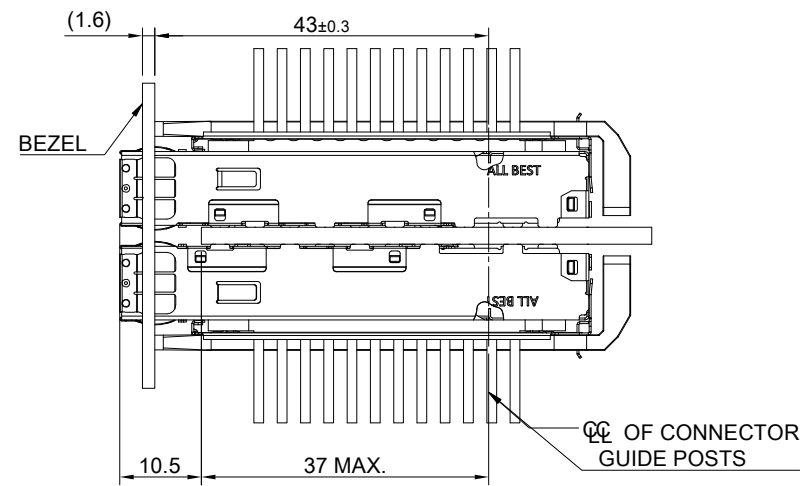
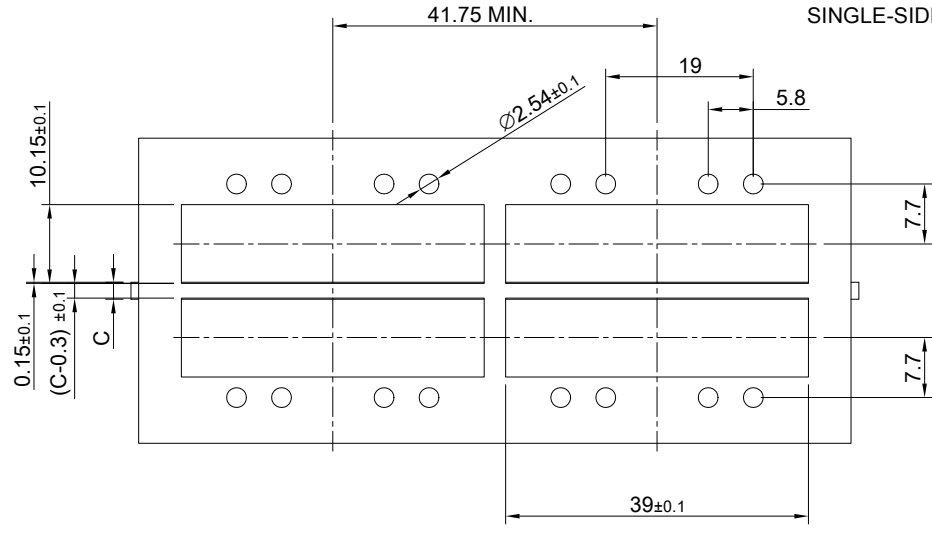
FINISH
 HEAT SINK: ANODE PROCESS

NOTE
 ▲ DIMENSION APPLIES WITH MODULE INSERTED IN CAGE

	TITLE: QSFP28 1X2 Cage Assembly w/ NET Light Pipe & Heat Sink		
	DWG#: R-OR-ZQ2-4CME3-MK		SHEET: 1/4
	UNIT: mm	SCALE: A4 1:1	REV. B
	 THIRD ANGLE PROJECTION TOLERANCE: Angle: ± 1° X.± 0.25 .X± 0.20 .XX± 0.15		CHECKED: Gary Kang APPROVED: George Yang DATE: 01/05/2021
MATERIAL: RoHS Compliant		DRAWN: Jason Zhao	



SINGLE-SIDE CONFIGURATION

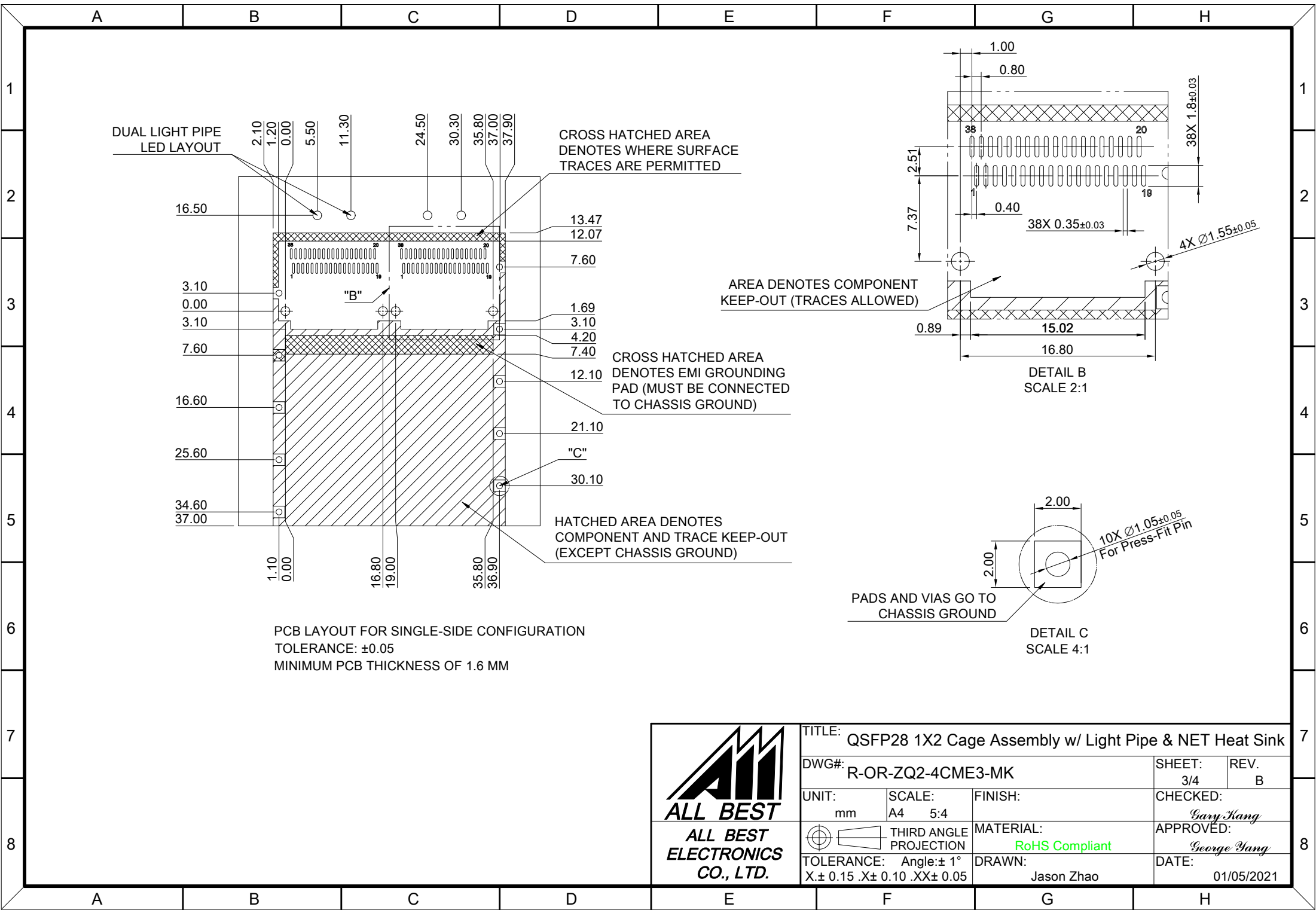


BELLY TO BELLY CONFIGURATION

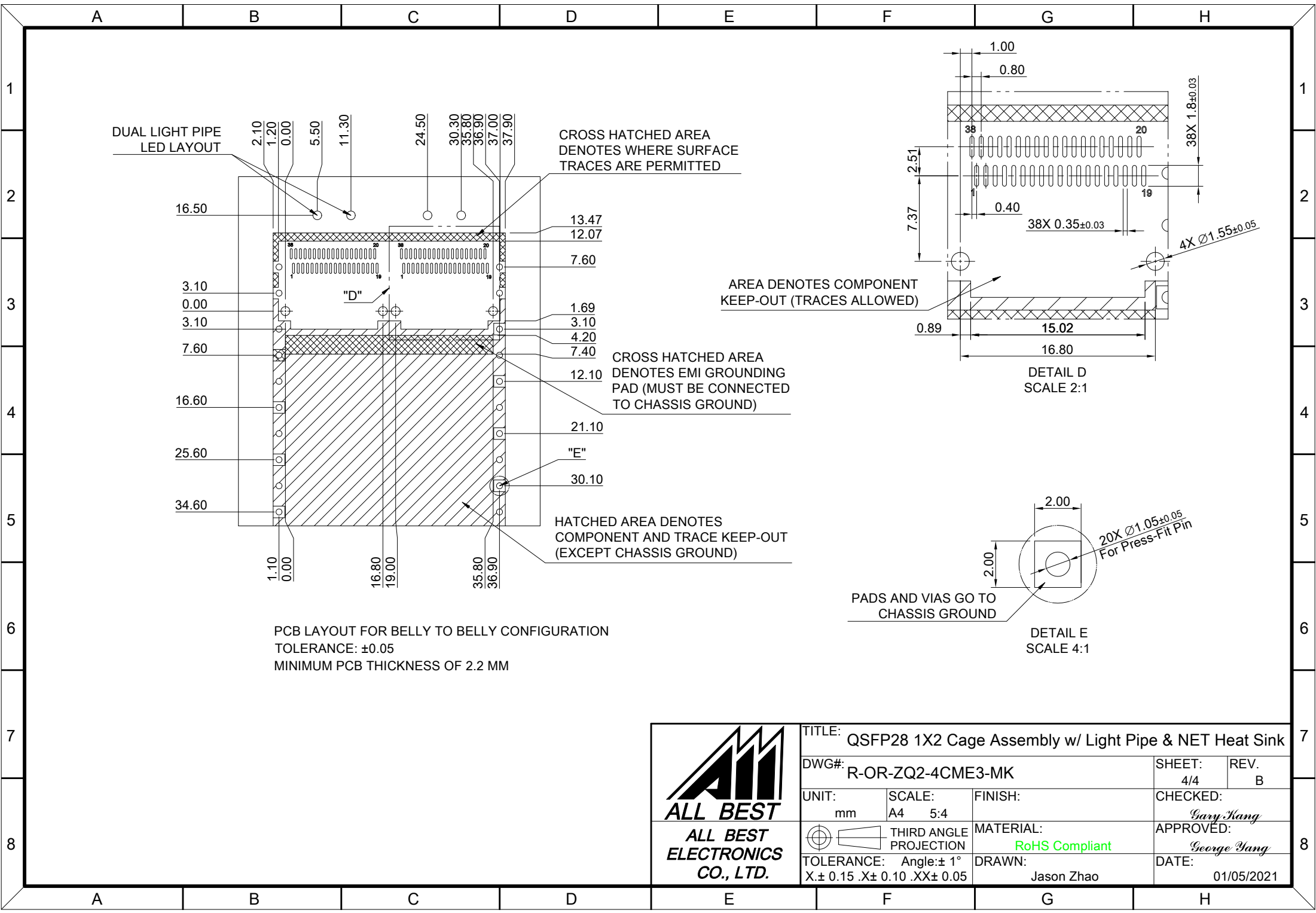
C = THICKNESS OF PC BOARD
 SINGLE-SIDE = 1.6MM (MIN.)
 BELLY TO BELLY = 2.2MM (MIN.)



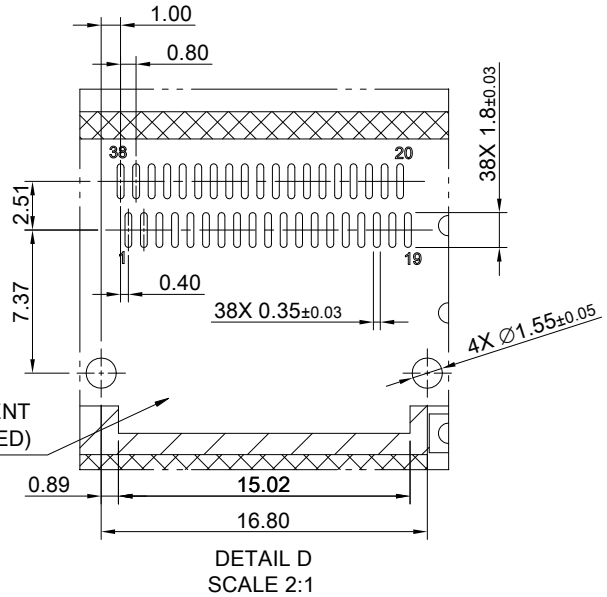
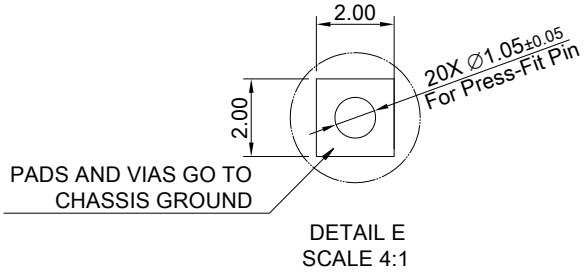
TITLE: QSFP28 1X2 Cage Assembly w/ Light Pipe & NET Heat Sink			
DWG#: R-OR-ZQ2-4CME3-MK		SHEET: 2/4	REV. B
UNIT: mm	SCALE: A4 1:1	CHECKED: Gary Kang	
TOLERANCE: Angle: ± 1° X ± 0.15 .X ± 0.10 .XX ± 0.05		MATERIAL: RoHS Compliant	APPROVED: George Yang
THIRD ANGLE PROJECTION		DRAWN: Jason Zhao	DATE: 01/05/2021



TITLE: QSFP28 1X2 Cage Assembly w/ Light Pipe & NET Heat Sink			
DWG#: R-OR-ZQ2-4CME3-MK		SHEET: 3/4	REV.: B
UNIT: mm	SCALE: A4 5:4	CHECKED: Gary Kang	
THIRD ANGLE PROJECTION		APPROVED: George Yang	
TOLERANCE: Angle: $\pm 1^\circ$ X: ± 0.15 .X: ± 0.10 .XX: ± 0.05		DRAWN: Jason Zhao	DATE: 01/05/2021



PCB LAYOUT FOR BELLY TO BELLY CONFIGURATION
 TOLERANCE: ± 0.05
 MINIMUM PCB THICKNESS OF 2.2 MM



	TITLE: QSFP28 1X2 Cage Assembly w/ Light Pipe & NET Heat Sink			SHEET: 4/4		REV. B	
	DWG#: R-OR-ZQ2-4CME3-MK			CHECKED: Gary Kang		APPROVED: George Yang	
	UNIT: mm	SCALE: A4 5:4	FINISH:	MATERIAL: RoHS Compliant		DATE: 01/05/2021	
	TOLERANCE: X \pm 0.15 .X \pm 0.10 .XX \pm 0.05		THIRD ANGLE PROJECTION	DRAWN: Jason Zhao			