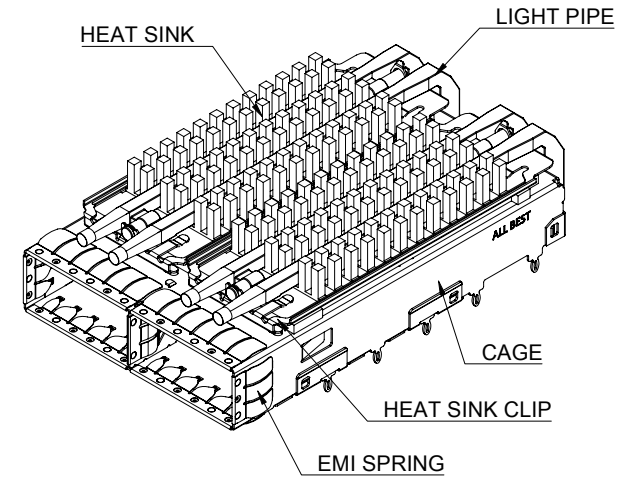
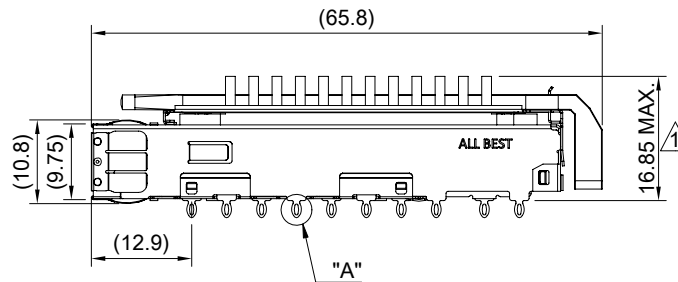
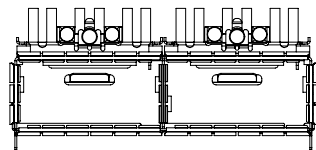


DETAIL A
SCALE 4:1



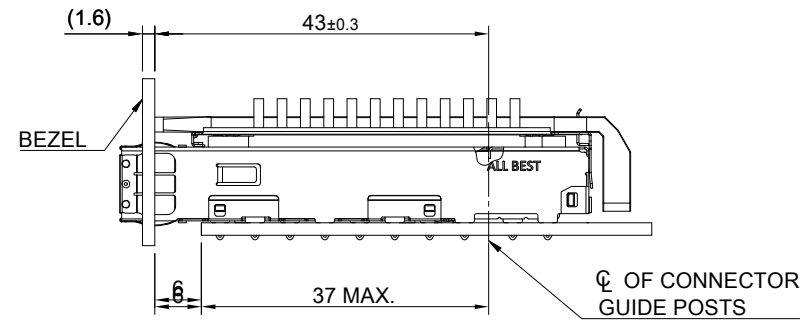
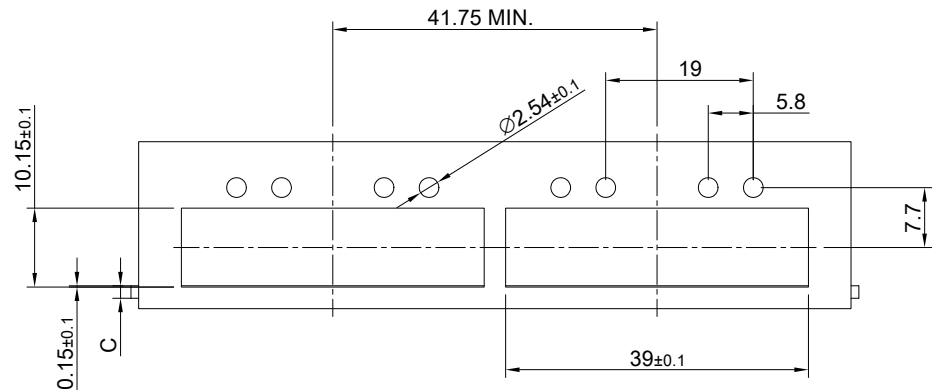
MATERIAL
 CAGE: NICKEL SILVER
 EMI SPRING: STAINLESS STEEL
 HEAT SINK: ALUMINUM
 HEAT SINK CLIP: STAINLESS STEEL
 LIGHT PIPE: PC

FINISH
 HEAT SINK: ANODE PROCESS

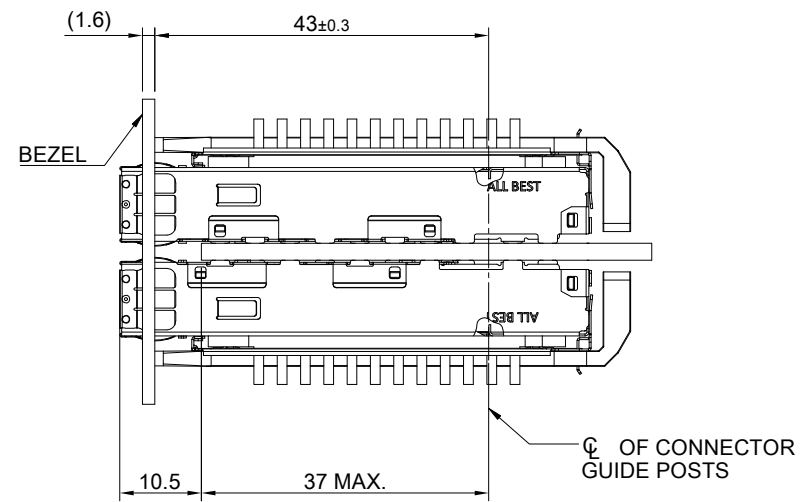
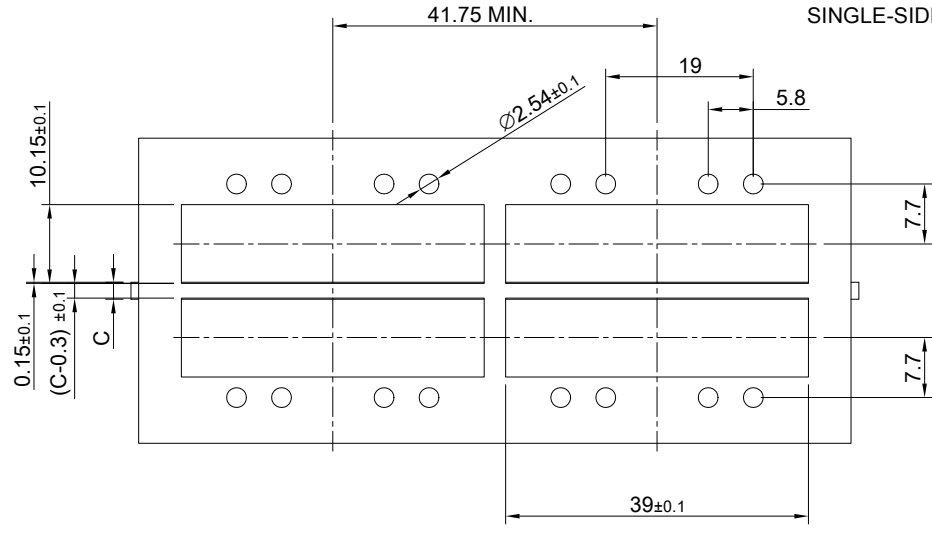
NOTE
 ▲ DIMENSION APPLIES WITH MODULE INSERTED IN CAGE



TITLE: QSFP28 1X2 Cage Assembly w/ SAN Heat Sink & Light Pipe			
DWG#: R-OR-ZQ2-4CME4-MK		SHEET: 1/4	REV. B
UNIT: mm	SCALE: A4 1:1	FINISH:	CHECKED: Gary Kang
THIRD ANGLE PROJECTION		MATERIAL: RoHS Compliant	APPROVED: George Yang
TOLERANCE: Angle: ± 1° X ± 0.25 .X ± 0.20 .XX ± 0.15		DRAWN: Benson	DATE: 04/07/2021




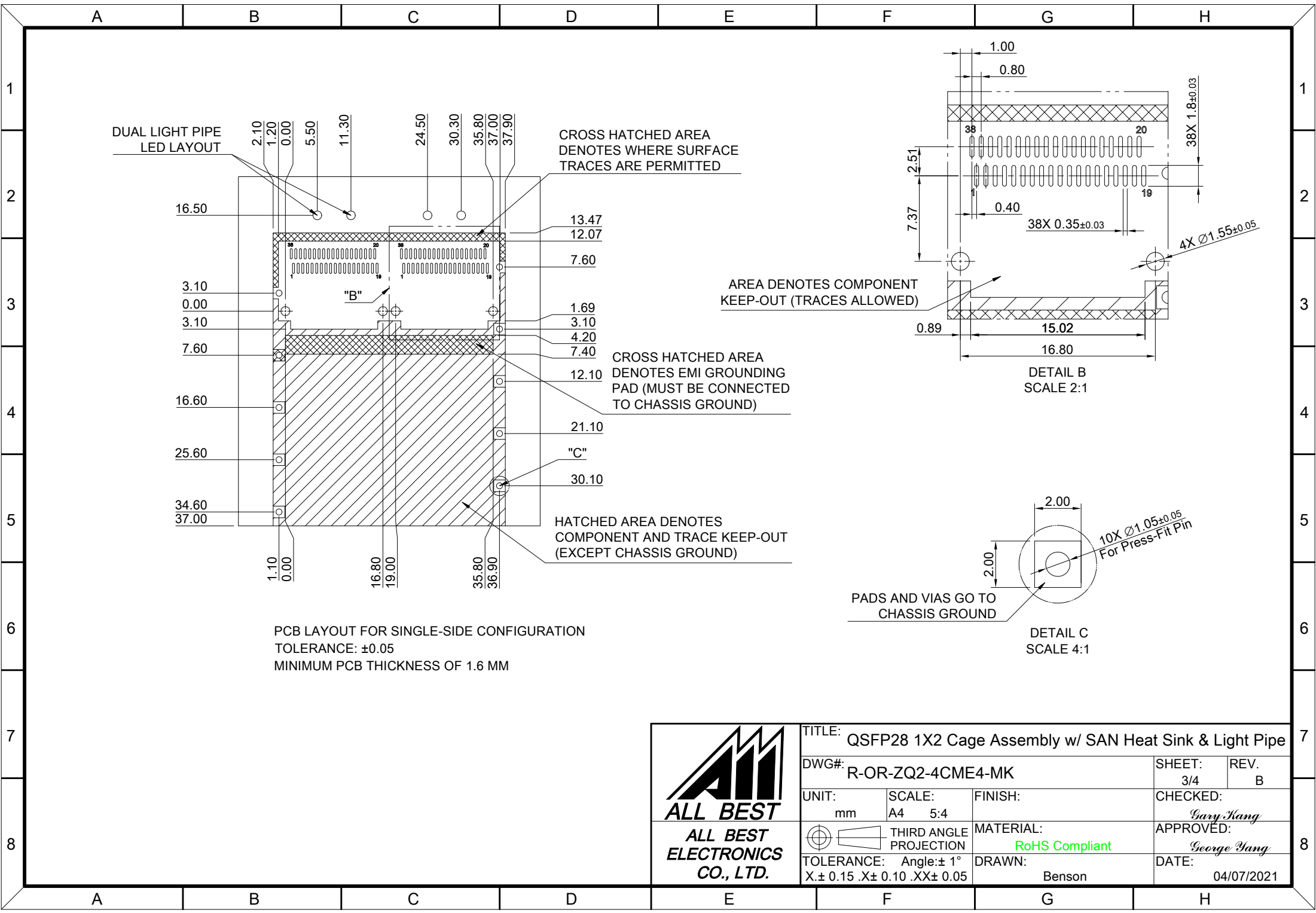
SINGLE-SIDE CONFIGURATION



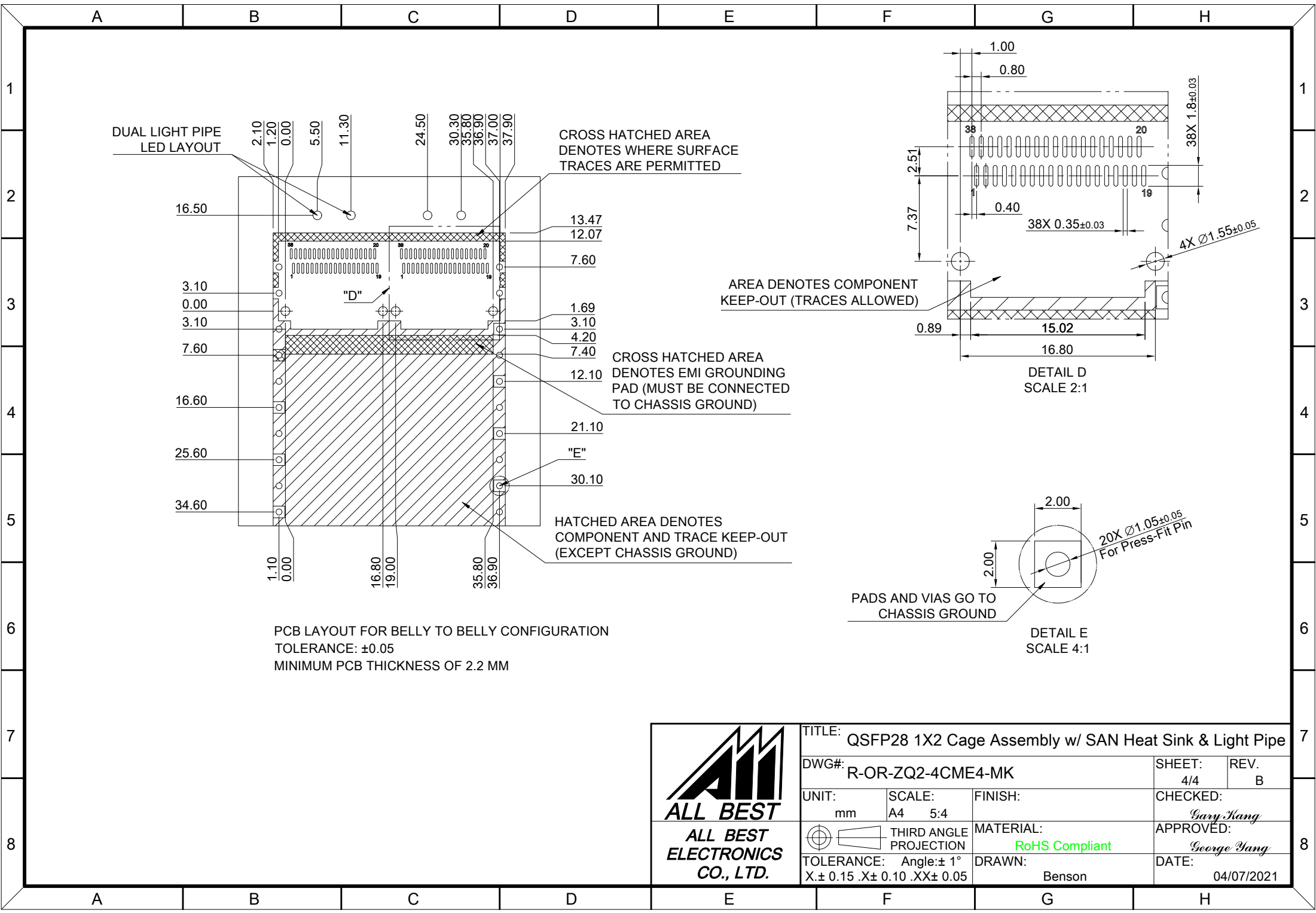
BELLY TO BELLY CONFIGURATION

C = THICKNESS OF PC BOARD
 SINGLE-SIDE = 1.6MM (MIN.)
 BELLY TO BELLY = 2.2MM (MIN.)

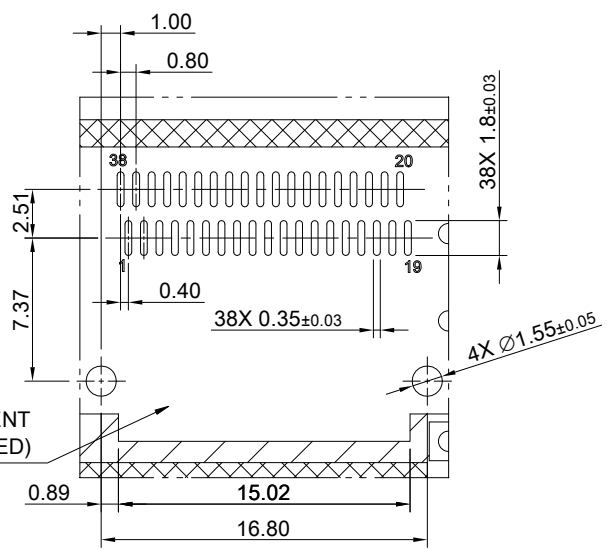
	TITLE: QSFP28 1X2 Cage Assembly w/ SAN Heat Sink & Light Pipe		SHEET: 2/4	REV. B
	DWG#: R-OR-ZQ2-4CME4-MK		CHECKED: Gary Kang	
	UNIT: mm	SCALE: A4 1:1	APPROVED: George Yang	
	TOLERANCE: Angle: $\pm 1^\circ$ X ± 0.15 .X ± 0.10 .XX ± 0.05		MATERIAL: RoHS Compliant	DATE: 04/07/2021
		THIRD ANGLE PROJECTION	DRAWN: Benson	



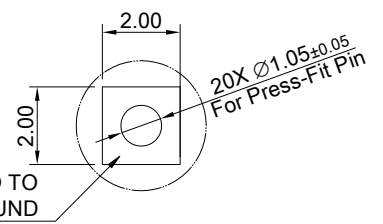
TITLE: QSFP28 1X2 Cage Assembly w/ SAN Heat Sink & Light Pipe			
DWG#: R-OR-ZQ2-4CME4-MK		SHEET: 3/4	REV.: B
UNIT: mm	SCALE: A4 5:4	CHECKED: Gary Kang	
THIRD ANGLE PROJECTION		APPROVED: George Yang	
TOLERANCE: Angle: $\pm 1^\circ$ X: ± 0.15 .X: ± 0.10 .XX: ± 0.05		MATERIAL: RoHS Compliant	DATE: 04/07/2021
		DRAWN: Benson	



PCB LAYOUT FOR BELLY TO BELLY CONFIGURATION
 TOLERANCE: ±0.05
 MINIMUM PCB THICKNESS OF 2.2 MM



DETAIL D
SCALE 2:1



DETAIL E
SCALE 4:1

PADS AND VIAS GO TO CHASSIS GROUND

	TITLE: QSFP28 1X2 Cage Assembly w/ SAN Heat Sink & Light Pipe			SHEET: 4/4		REV. B	
	DWG#: R-OR-ZQ2-4CME4-MK			CHECKED: Gary Kang		APPROVED: George Yang	
	UNIT: mm	SCALE: A4 5:4	FINISH:	MATERIAL: RoHS Compliant		DATE: 04/07/2021	
	TOLERANCE: X±0.15 .X±0.10 .XX±0.05		THIRD ANGLE PROJECTION	DRAWN: Benson			