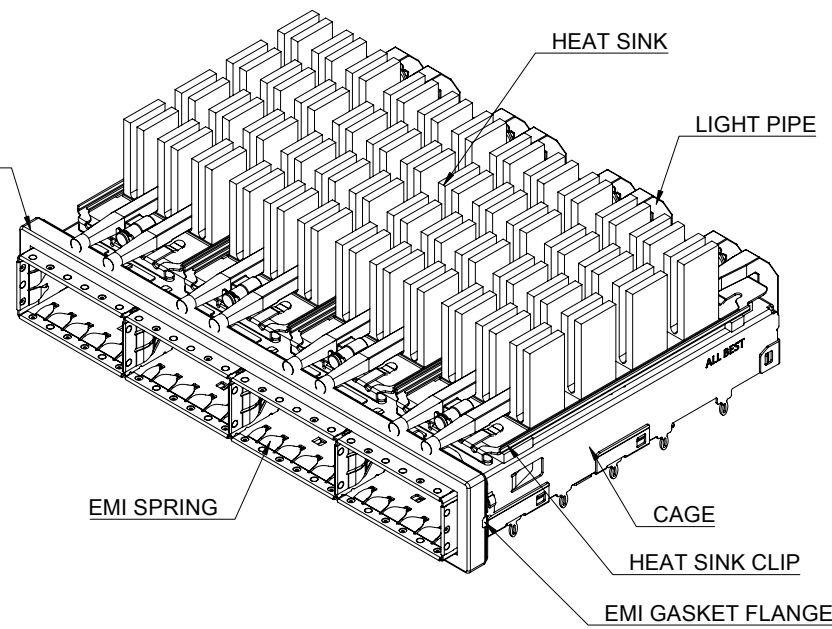


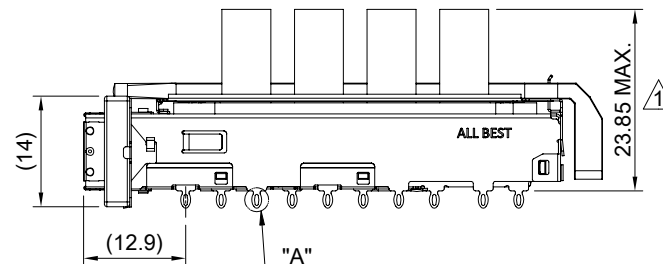
DETAIL A  
SCALE 4:1



- MATERIAL  
 CAGE: NICKEL SILVER  
 HEAT SINK: ALUMINUM  
 HEAT SINK CLIP: STAINLESS STEEL  
 EMI SPRING: STAINLESS STEEL  
 EMI GASKET: CONDUCTIVE ELASTOMER  
 EMI GASKET FLANGE: STAINLESS STEEL  
 LIGHT PIPE: PC

- FINISH  
 HEAT SINK: ANODE PROCESS

NOTE  
 ⚠ DIMENSION APPLIES WITH MODULE INSERTED IN CAGE



THIS PRINT IS  
**PRELIMINARY**  
 UNQUALIFIED PRODUCT  
 CONTACT PRODUCT ENGINEERING  
 BEFORE USING THIS PRINT



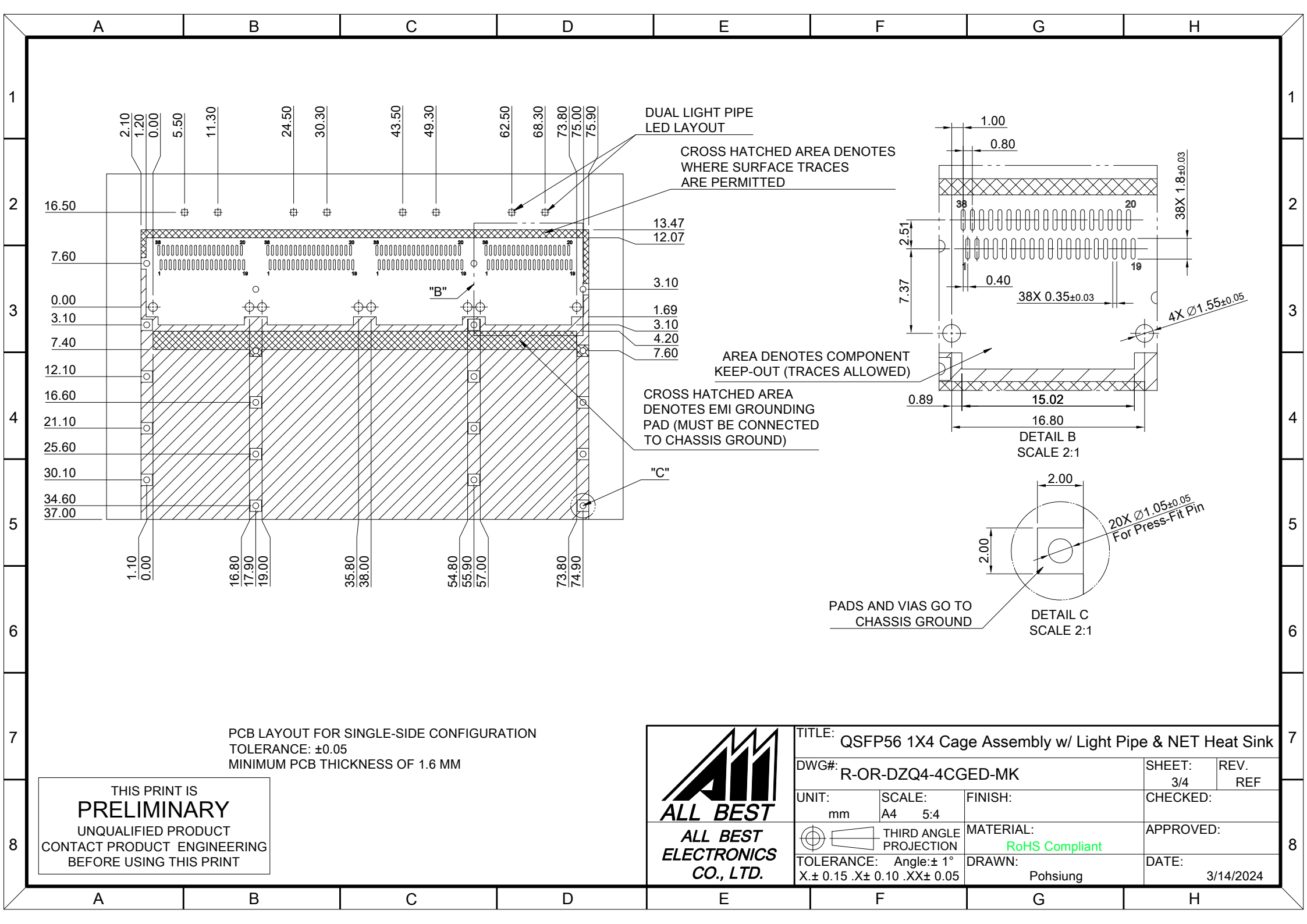
|   |               |                          |                 |           |
|---|---------------|--------------------------|-----------------|-----------|
| TITLE: QSFP56 1X4 Cage Assembly w/ Light Pipe & NET Heat Sink |               |                          |                 |           |
| DWG#: R-OR-DZQ4-4CGED-MK                                      |               |                          | SHEET: 1/4      | REV. REF  |
| UNIT: mm  | SCALE: A4 1:1 | FINISH:                  |                 | CHECKED:  |
| TOLERANCE: Angle: ± 1°<br>X ± 0.25 .X ± 0.20 .XX ± 0.15       |               | MATERIAL: RoHS Compliant |                 | APPROVED: |
| DRAWN: Pohsiung   |               |                          | DATE: 3/14/2024 |           |

1  
2  
3  
4  
5  
6  
7  
8

1  
2  
3  
4  
5  
6  
7  
8



A B C D E F G H

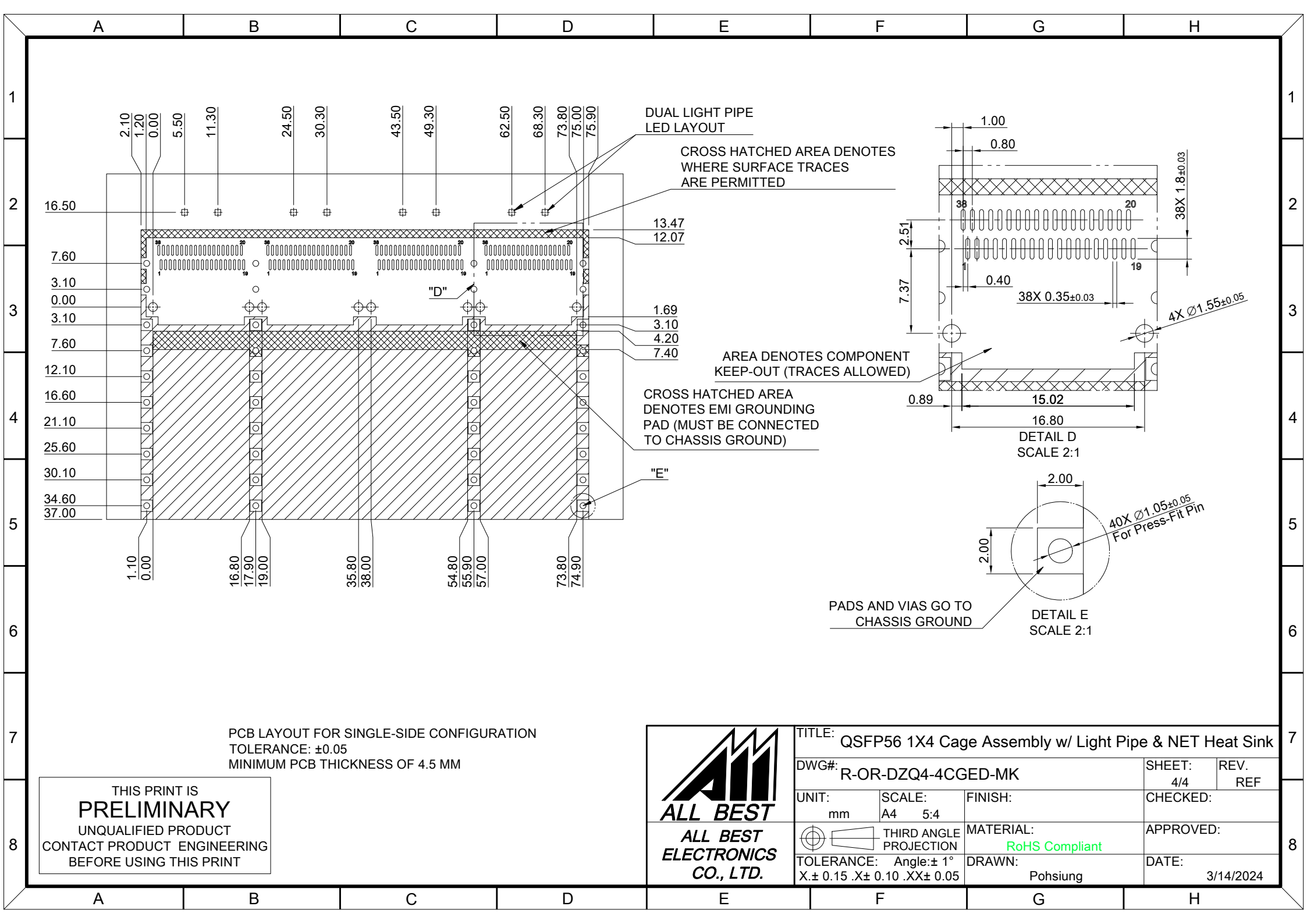




PCB LAYOUT FOR SINGLE-SIDE CONFIGURATION  
 TOLERANCE:  $\pm 0.05$   
 MINIMUM PCB THICKNESS OF 1.6 MM

THIS PRINT IS  
**PRELIMINARY**  
 UNQUALIFIED PRODUCT  
 CONTACT PRODUCT ENGINEERING  
 BEFORE USING THIS PRINT

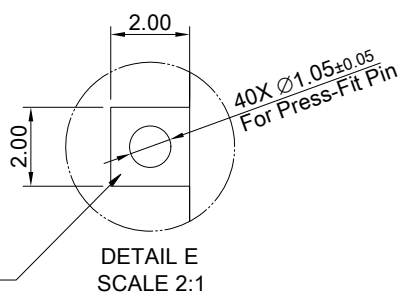
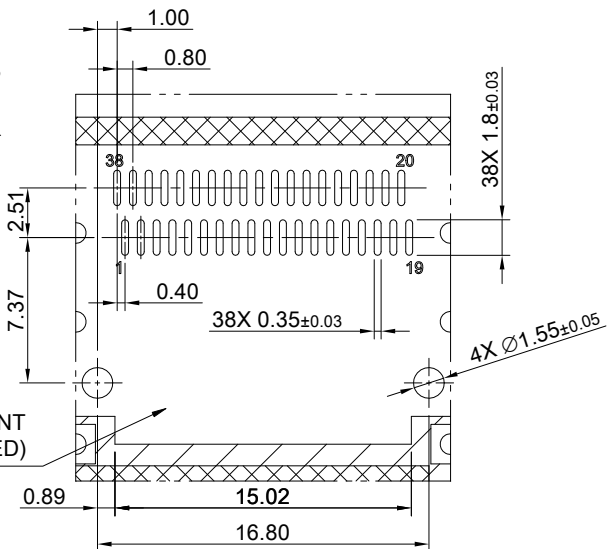
|  |               |   |                        |
|--|---------------|---|------------------------|
| <br><b>ALL BEST ELECTRONICS CO., LTD.</b> |               | TITLE: QSFP56 1X4 Cage Assembly w/ Light Pipe & NET Heat Sink |                        |
|  |               | DWG#: R-OR-DZQ4-4CGED-MK                                      | SHEET: 3/4<br>REV. REF |
| UNIT: mm   | SCALE: A4 5:4 | FINISH:   | CHECKED:               |
|  THIRD ANGLE PROJECTION                   |               | MATERIAL: <b>RoHS Compliant</b>                               | APPROVED:              |
| TOLERANCE: Angle: $\pm 1^\circ$<br>X: $\pm 0.15$ .X: $\pm 0.10$ .XX: $\pm 0.05$  |               | DRAWN: Pohsiung   | DATE: 3/14/2024        |



DUAL LIGHT PIPE LED LAYOUT  
 CROSS HATCHED AREA DENOTES WHERE SURFACE TRACES ARE PERMITTED

AREA DENOTES COMPONENT KEEP-OUT (TRACES ALLOWED)

CROSS HATCHED AREA DENOTES EMI GROUNDING PAD (MUST BE CONNECTED TO CHASSIS GROUND)



PADS AND VIAS GO TO CHASSIS GROUND

PCB LAYOUT FOR SINGLE-SIDE CONFIGURATION  
 TOLERANCE: ±0.05  
 MINIMUM PCB THICKNESS OF 4.5 MM

THIS PRINT IS  
**PRELIMINARY**  
 UNQUALIFIED PRODUCT  
 CONTACT PRODUCT ENGINEERING  
 BEFORE USING THIS PRINT

|   |               |   |                 |
|---|---------------|---|-----------------|
|   |               | TITLE: QSFP56 1X4 Cage Assembly w/ Light Pipe & NET Heat Sink |                 |
|   |               | DWG#: R-OR-DZQ4-4CGED-MK                                      |                 |
| UNIT: mm  | SCALE: A4 5:4 | FINISH:   | SHEET: 4/4      |
| THIRD ANGLE PROJECTION                                |               | MATERIAL: RoHS Compliant                                      | REV. REF        |
| TOLERANCE: Angle: ± 1°<br>X.± 0.15 .X± 0.10 .XX± 0.05 |               | DRAWN: Pohsiung   | CHECKED:        |
|   |               | APPROVED:   | DATE: 3/14/2024 |