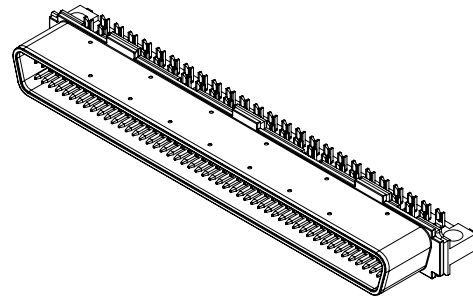


A B C D E F G H

1
2
3
4
5
6
7
8

1
2
3
4
5
6
7
8



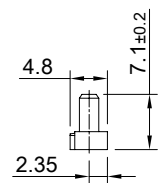
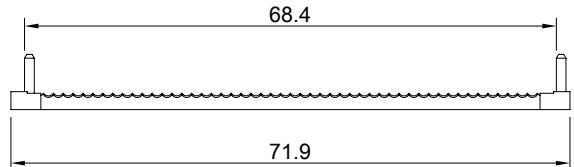
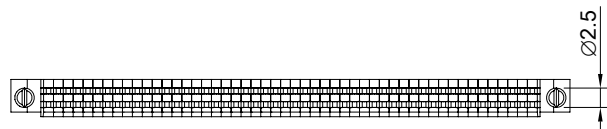
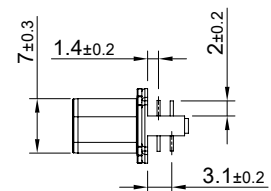
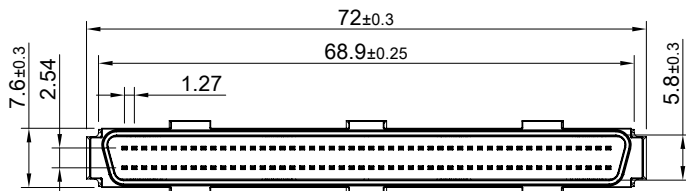
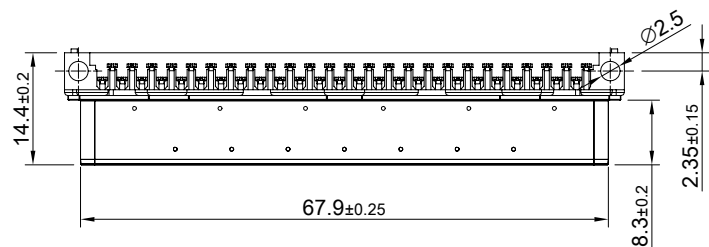
ELECTRICAL CHARACTERISTICS
 CONTACT CURRENT RATING: 1 AMPERE
 DIELECTRIC WITHSTANDING VOLTAGE: 500VAC
 INSULATION RESISTANCE: 1000 MEGOHMS MIN.
 CONTACT RESISTANCE: 25 MILLIOHMS MAX.

MATERIALS
 CONTACTS: COPPER ALLOY
 INSULATOR: THERMOPLASTIC 94V-0
 SHELL: COLD ROLLER STEEL

FINISHES
 CONTACT: 5μ" MIN. GOLD ON MATING END;
 ALL UNDERPLATED NICKEL
 SHELL: NICKEL OVER COPPER

ENVIRONMENT
 OPERATION TEMPERATURE: -55°C TO + 85°C
 COMPATIBLE CABLE: AWG #28

NOTES
 1.MATERIAL: THERMOPLASTIC
 2.THE STRAIN RELIEF WILL NOT SOLD SEPARATELY
 3.SHIP WITH TWO R-SR-013100-01



P/N:R-SR-013100-01

 ALL BEST ALL BEST ELECTRONICS CO., LTD.	TITLE: 1.27mm Cable Plug			SHEET: 1/1	REV. D
	DWG#: R-ZI-013100			CHECKED: Gary Kang	
	UNIT: mm	SCALE: A4 1:1	FINISH:	APPROVED: George Yang	
	TOLERANCE: Angle: ± 1° X.± 0.25 .X± 0.20 .XX± 0.15		MATERIAL: RoHS Compliant	DATE: 08/04/2023	
THIRD ANGLE PROJECTION			DRAWN: Joe		

A B C D E F G H