

A B C D E F G H

1

2

3

4

5

6

7

8

1

2

3

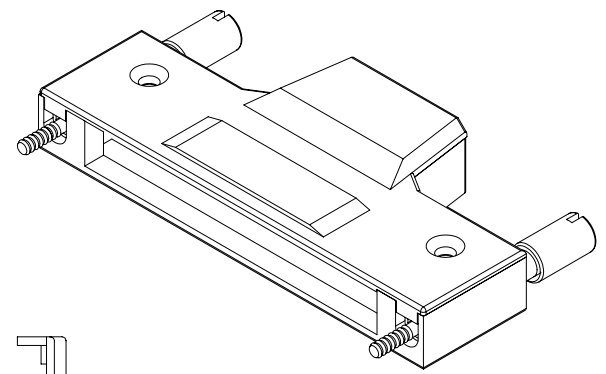
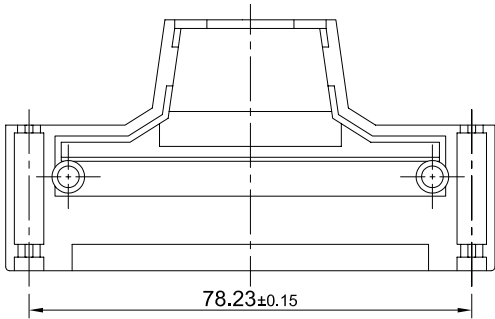
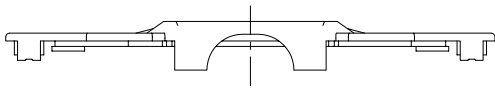
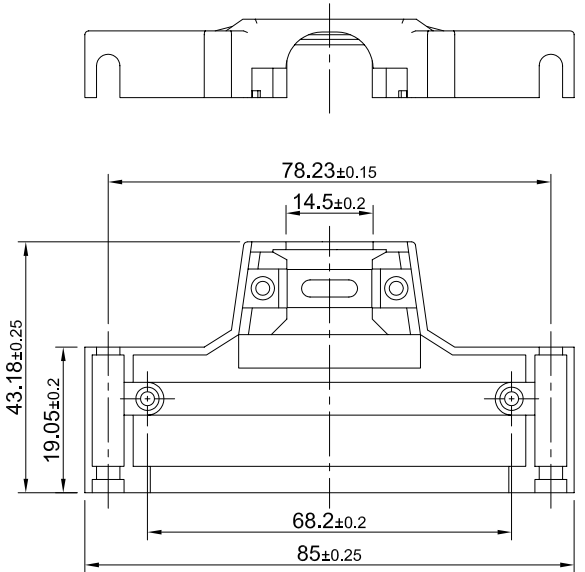
4

5

6

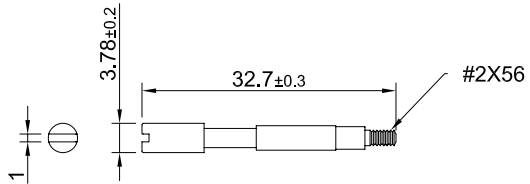
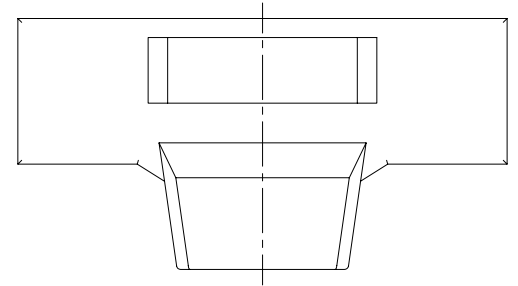
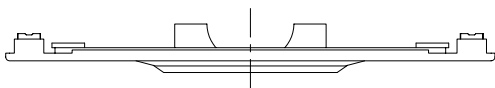
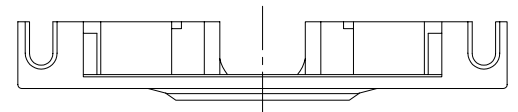
7

8



MATERIALS
 BACKSHELL: ZINC ALLOY
 THUMBSCREW: STEEL

FINISHES
 BACKSHELL: PLATED NICKEL
 THUMBSCREW: PLATED NICKEL



REFERRAL TORQUE=2kgf-cm~2.5kgf-cm

	TITLE: .050 Series Backshell			SHEET:	REV.
	DWG#: R-ZC-013100-S			1/1	C
	UNIT:	SCALE:	FINISH:	CHECKED:	
	mm	A4 N/A		<i>Gary Kang</i>	
THIRD ANGLE PROJECTION			MATERIAL:		APPROVED:
TOLERANCE: Angle:± 1°			RoHS Compliant		<i>George Yang</i>
X.± 0.25 .X± 0.2 .XX± 0.15			DRAWN:		DATE:
			Henk Wu		10/30/2012

A B C D E F G H