

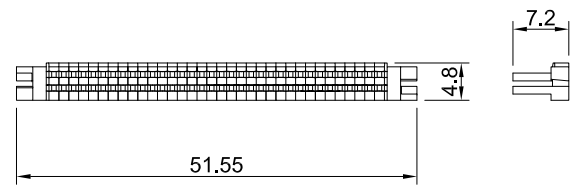
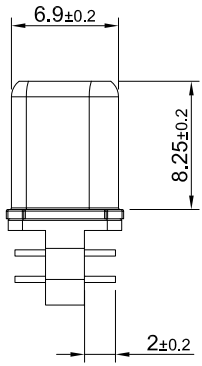
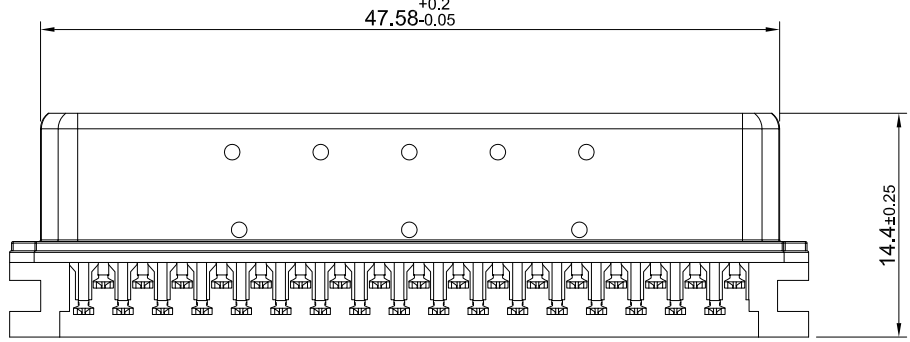
ELECTRICAL CHARACTERISTICS
 CONTACT CURRENT RATING:1AMPERE
 DIELECTRIC WITHSTANDING VOLTAGE:500 VAC
 INSULATION RESISTANCE:1000 MEGOHMS MIN.
 CONTACT RESISTANCE:25 MILLIOHMS MAX.

MATERIALS
 CONTACTS:COPPER ALLOY
 INSULATOR:THERMOPLASTIC 94V-0
 SHELL:COLD ROLLER STEEL

FINISHES
 CONTACT:30 μ" MIN. GOLD ON MATING END;
 ALL UNDERPLATED NICKEL
 SHELL:NICKEL OVER COPPER

ENVIRONMENT
 OPERATION TEMPERATURE: -55°C TO +85°C
 COMPATIBLE CABLE:AWG #30

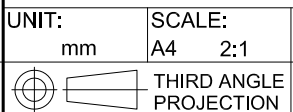
NOTES
 1.MATERIAL:THERMOPLASTIC
 2.THE STRAIN RELIEF WILL NOT SOLD SEPARATELY
 3.SHIP WITH TWO R-SR-013068-02



P/N:R-SR-013068-02
 SCALE: 1:1



TITLE: 1.27mm Cable Plug		SHEET: 1/1	REV. C
DWG#: R-ZI-013068-A-M		CHECKED: Gary Kang	
UNIT: mm	SCALE: A4 2:1	APPROVED: George Yang	
FINISH: RoHS Compliant		DATE: 04/15/2013	
TOLERANCE: Angle:± 1° X.± 0.25 .X± 0.2 .XX± 0.15		DRAWN: Sheng	



THIRD ANGLE PROJECTION