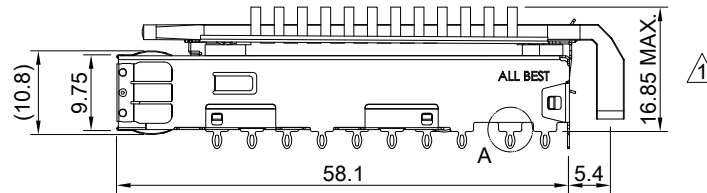
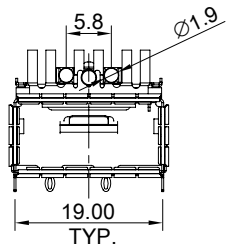
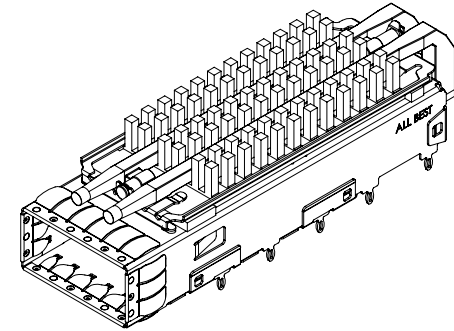


DETAIL A
SCALE 5 : 1

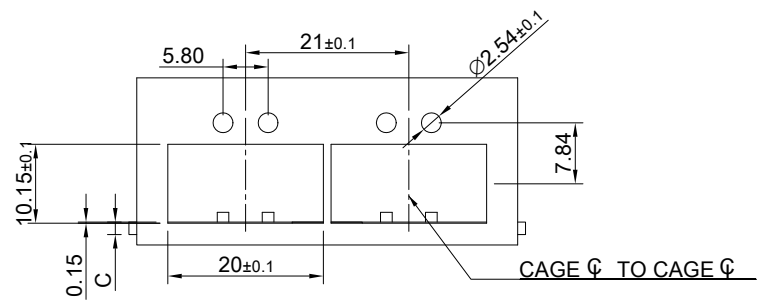


MATERIAL
 CAGE: NICKEL SILVER
 HEAT SINK: ALUMINUM
 HEAT SINK CLIP: STAINLESS STEEL
 EMI SPRING: STAINLESS STEEL
 LIGHT PIPE: PC

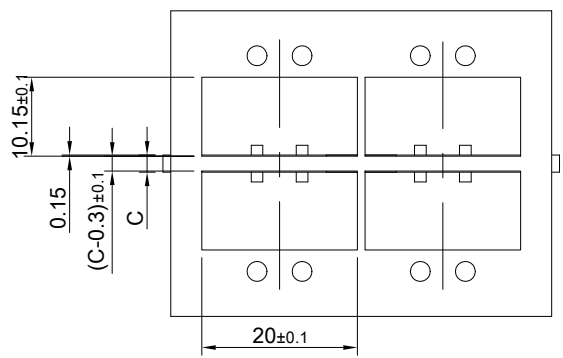
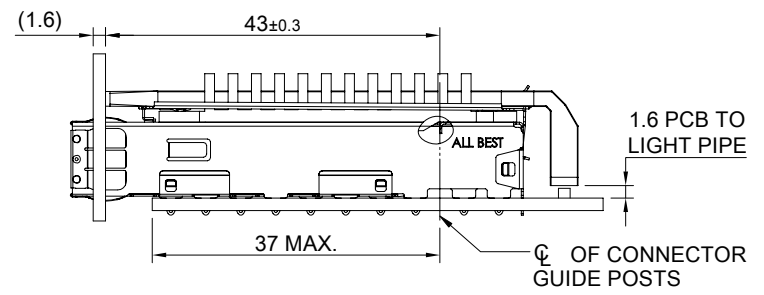
FINISH
 HEAT SINK: ANODE PROCESS

NOTE
 ▲ DIMENSION APPLIES WITH MODULE INSERTED IN CAGE

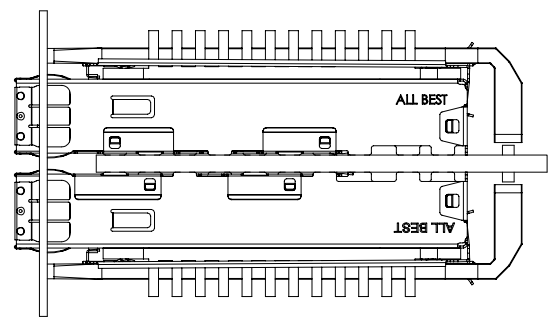
 ALL BEST ELECTRONICS CO., LTD.	TITLE: QSFP+ 1X1 Cage Assembly w/ Light Pipe & Heat Sink			SHEET: 1/4		REV. E
	DWG#: R-OR-Q1-4CME4			CHECKED: Gary Kang		
	UNIT: mm	SCALE: A4 1:1	FINISH:	APPROVED: George Yang		
	TOLERANCE: X±0.25 .X±0.20 .XX±0.15		THIRD ANGLE PROJECTION	MATERIAL: RoHS Compliant	DATE: 05/27/2021	
		Angle: ±1°	DRAWN: Howard			



ONE SIDED CONFIGURATION



BELLY TO BELLY CONFIGURATION

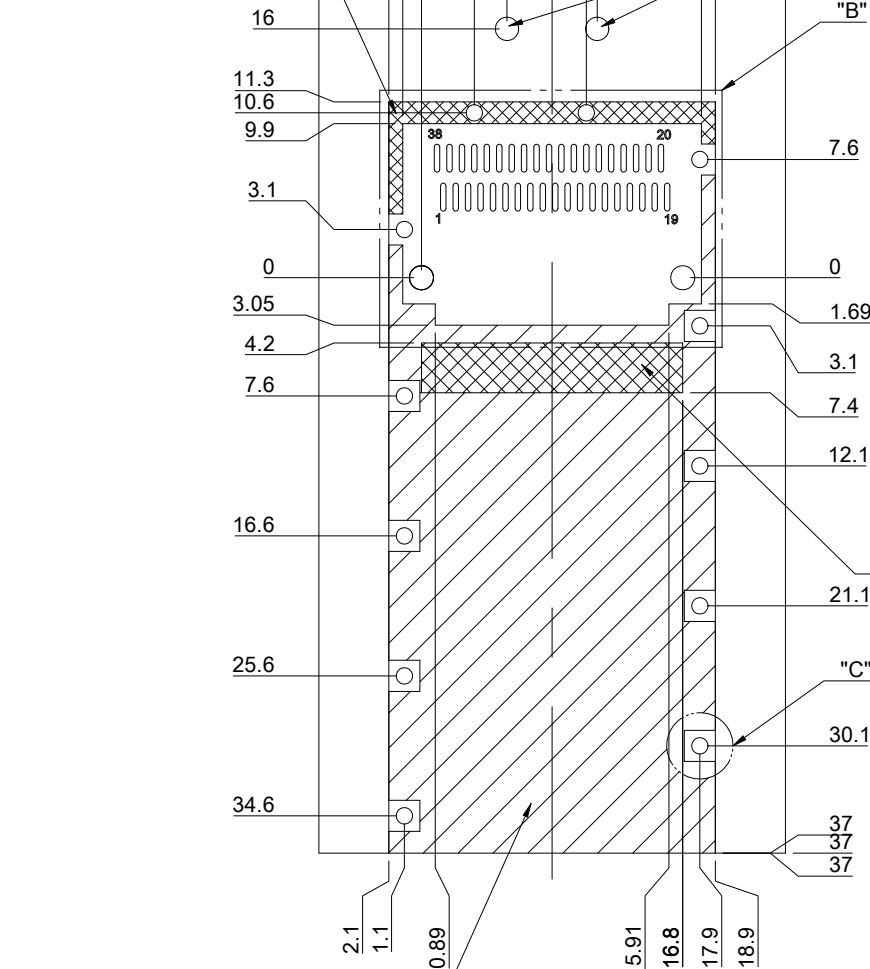


C=THICKNESS OF PC BOARD
 SINGLE SIDED=1.6MM(MIN)
 DOUBLE SIDE=2.2MM(MIN)

	TITLE: QSFP+ 1X1 Cage Assembly w/ Light Pipe & Heat Sink		
	DWG#: R-OR-Q1-4CME4		SHEET: 2/4
	UNIT: mm	SCALE: A4 1:1	REV. E
	THIRD ANGLE PROJECTION		CHECKED: Gary Kang
TOLERANCE: Angle: ± 1°		MATERIAL: RoHS Compliant	APPROVED: George Yang
X.± 0.15 .X± 0.10 .XX± 0.05		DRAWN: Howard	DATE: 05/27/2021

CROSS HATCHED AREA DENOTES WHERE SURFACE TRACES ARE PERMITTED

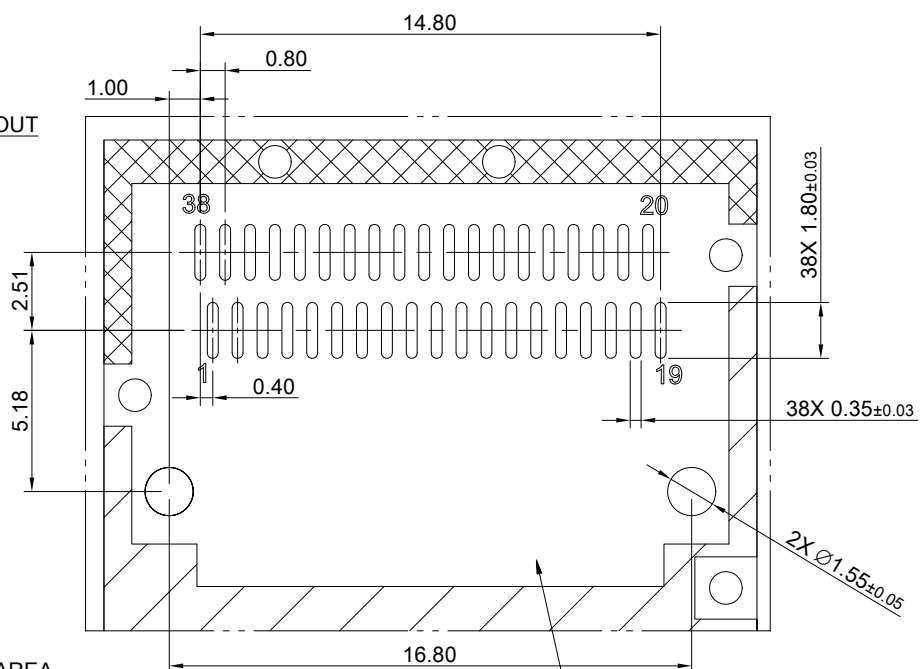
DUAL LIGHT PIPE LED LAYOUT



HATCHED AREA DENOTES COMPONENT AND TRACE KEEP-OUT (EXCEPT CHASSIS GROUND)

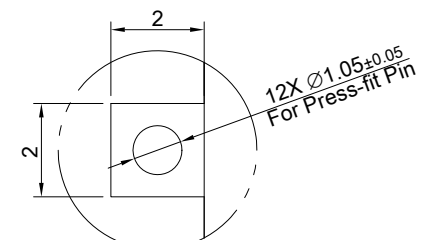
SINGLE SIDE PCB LAYOUT
MINIMUM PCB THICKNESS OF 1.6 MM
TOLERANCE: ±0.05

CROSS HATCHED AREA DENOTES EMI GROUNDING PAD (MUST BE CONNECTED TO CHASSIS GROUND)



DETAIL B
SCALE 2:1

AREA DENOTES COMPONENT KEEP-OUT (TRACES ALLOWED)

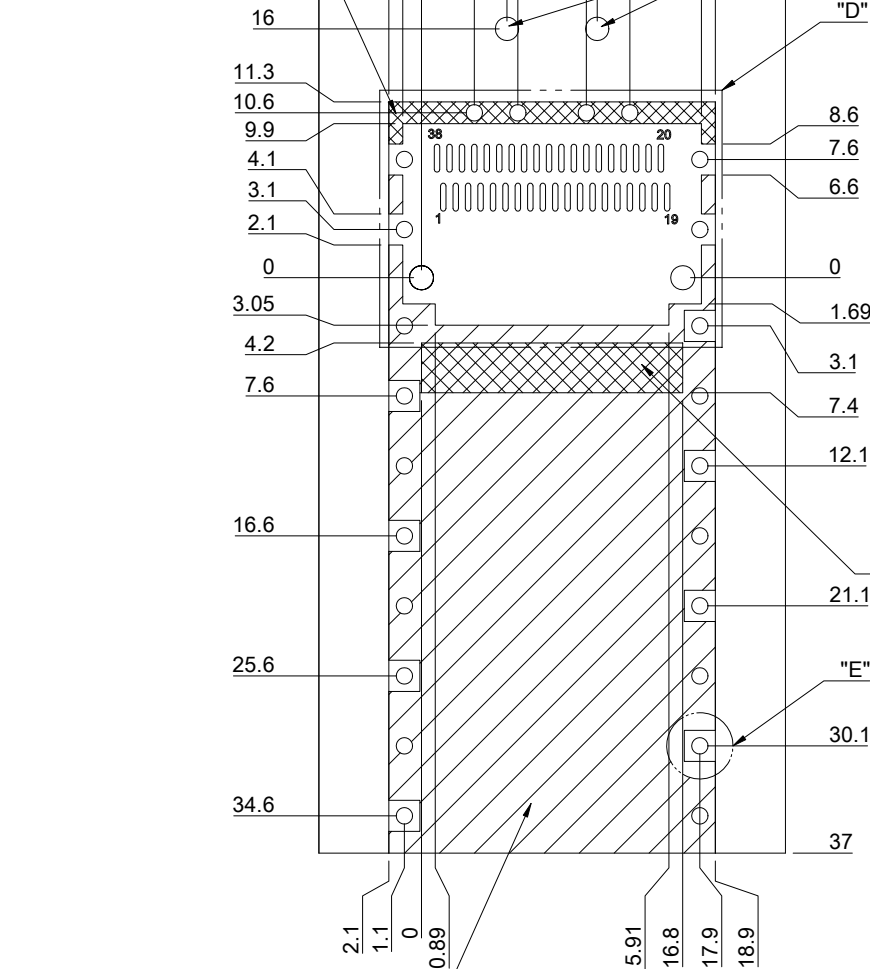


DETAIL C
SCALE 3:1

<p>ALL BEST ELECTRONICS CO., LTD.</p>	TITLE: QSFP+ 1X1 Cage Assembly w/ Light Pipe & Heat Sink			SHEET: 3/4		REV.: E	
	DWG#: R-OR-Q1-4CME4			CHECKED: Gary Kang		APPROVED: George Yang	
	UNIT: mm	SCALE: A4 2:1	FINISH: M/T	MATERIAL: RoHS Compliant		DATE: 05/27/2021	
	TOLERANCE: X±0.15 .X±0.10 .XX±0.05		THIRD ANGLE PROJECTION	DRAWN: Howard			

CROSS HATCHED AREA DENOTES WHERE SURFACE TRACES ARE PERMITTED

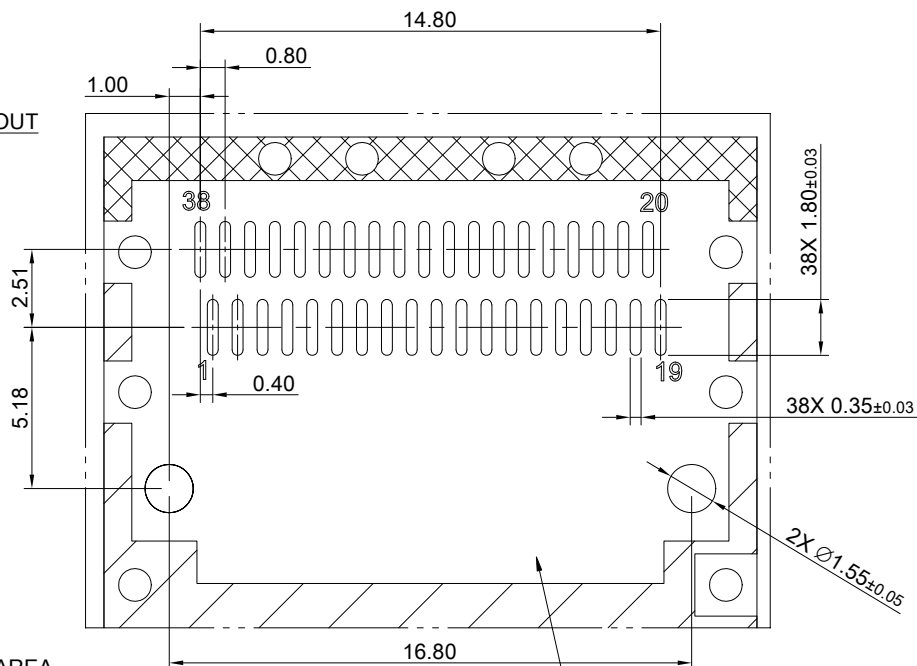
DUAL LIGHT PIPE LED LAYOUT



CROSS HATCHED AREA DENOTES EMI GROUNDING PAD (MUST BE CONNECTED TO CHASSIS GROUND)

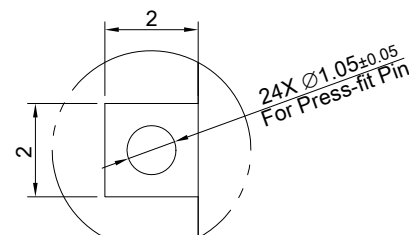
HATCHED AREA DENOTES COMPONENT AND TRACE KEEP-OUT (EXCEPT CHASSIS GROUND)

DOUBLE SIDE PCB LAYOUT
MINIMUM PCB THICKNESS OF 2.2 MM
TOLERANCE: ± 0.05



DETAIL D
SCALE 2:1

AREA DENOTES COMPONENT KEEP-OUT (TRACES ALLOWED)



DETAIL E
SCALE 3:1

<p>ALL BEST ALL BEST ELECTRONICS CO., LTD.</p>	TITLE: QSFP+ 1X1 Cage Assembly w/ Light Pipe & Heat Sink		SHEET: 4/4		REV.: E
	DWG#: R-OR-Q1-4CME4		CHECKED: Gary Kang		APPROVED: George Yang
	UNIT: mm	SCALE: A4 2:1	FINISH: M/T	MATERIAL: RoHS Compliant	
	TOLERANCE: Angle: $\pm 1^\circ$ X: ± 0.15 .X: ± 0.10 .XX: ± 0.05		DRAWN: Howard	DATE: 05/27/2021	