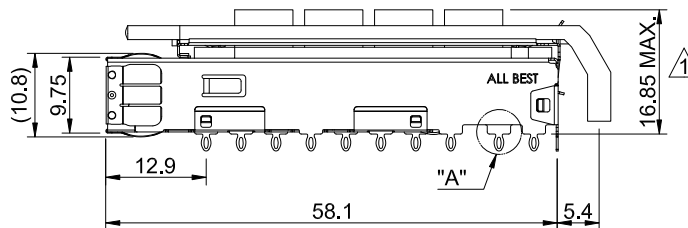
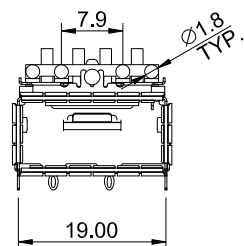
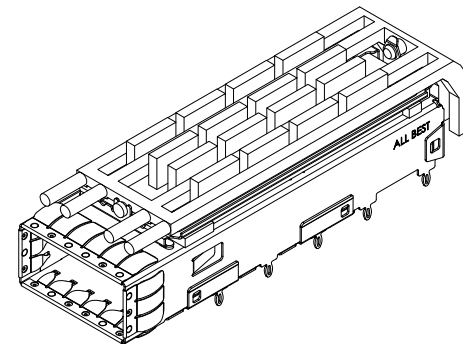


DETAIL A
SCALE 5:1

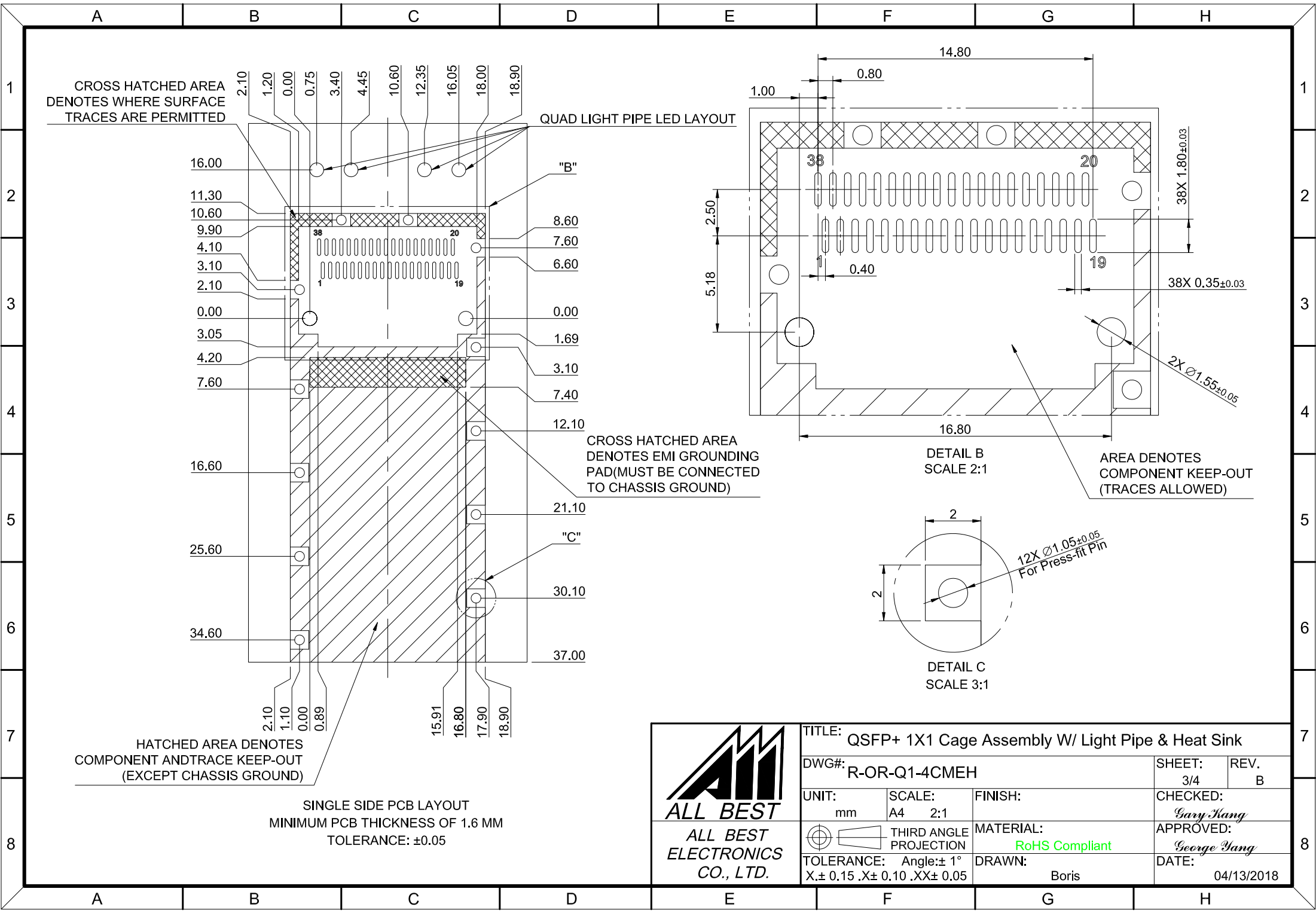


MATERIAL
 CAGE: NICKEL SILVER
 HEAT SINK: ALUMINUM
 HEAT SINK CLIP: STAINLESS STEEL
 EMI SPRING: STAINLESS STEEL
 LIGHT PIPE: PC

FINISH
 HEAT SINK: ANODE PROCESS

NOTE
 ▲ DIMENSION APPLIES WITH MODULE INSERTED IN CAGE

 ALL BEST ALL BEST ELECTRONICS CO., LTD.	TITLE: QSFP+ 1X1 Cage Assembly w/ Light Pipe & Heat Sink		SHEET: 1/4		REV. B
	DWG#: R-OR-Q1-4CMEH		CHECKED: Gary Kang		APPROVED: George Yang
	UNIT: mm	SCALE: A4 1:1	FINISH:	MATERIAL: RoHS Compliant	
	TOLERANCE: X.± 0.25 .X± 0.20 .XX± 0.15		THIRD ANGLE PROJECTION	DRAWN: Boris	DATE: 04/13/2018



CROSS HATCHED AREA DENOTES WHERE SURFACE TRACES ARE PERMITTED

QUAD LIGHT PIPE LED LAYOUT

CROSS HATCHED AREA DENOTES EMI GROUNDING PAD (MUST BE CONNECTED TO CHASSIS GROUND)


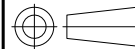
HATCHED AREA DENOTES COMPONENT AND TRACE KEEP-OUT (EXCEPT CHASSIS GROUND)

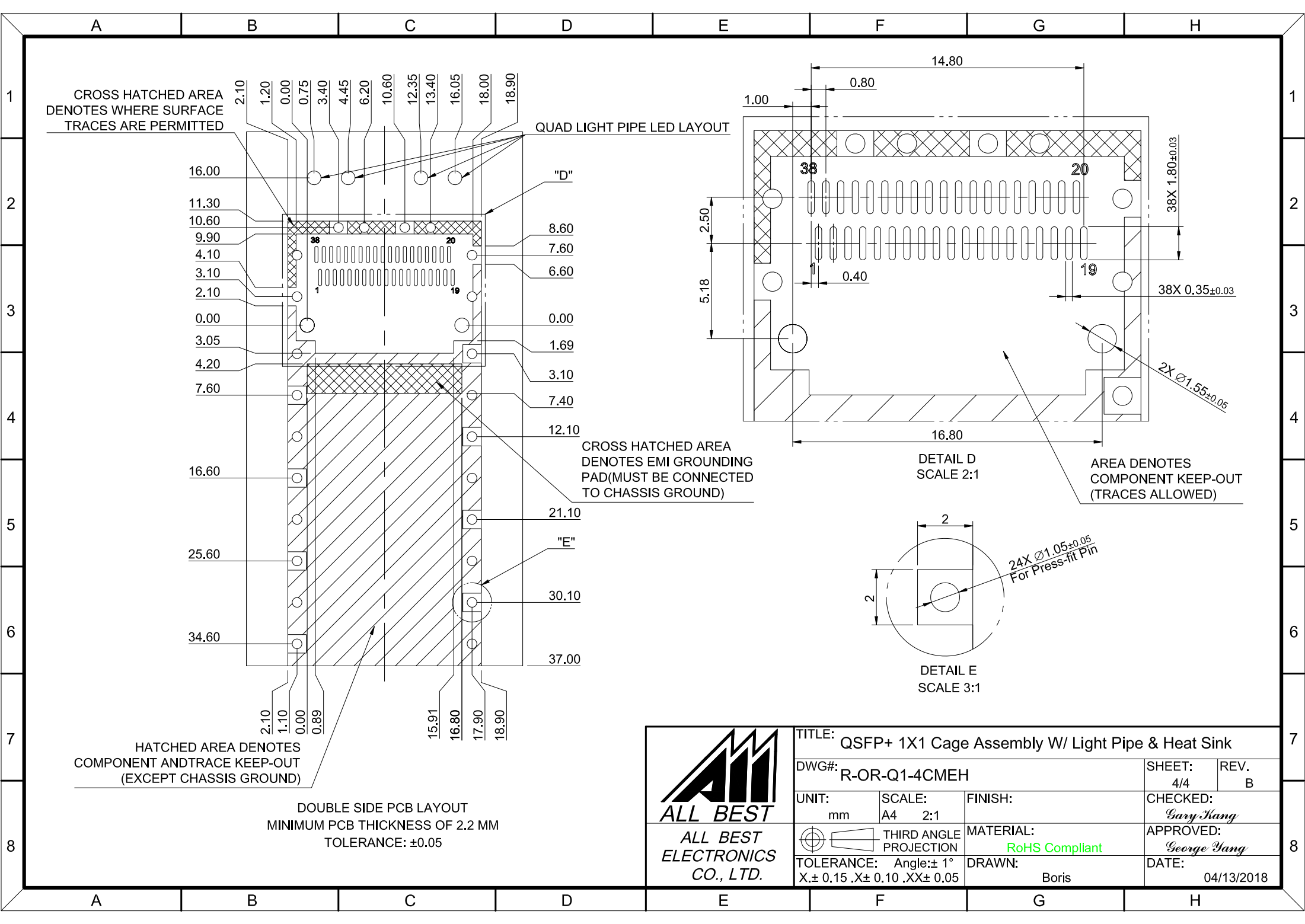
SINGLE SIDE PCB LAYOUT
MINIMUM PCB THICKNESS OF 1.6 MM
TOLERANCE: ±0.05

DETAIL B
SCALE 2:1

AREA DENOTES COMPONENT KEEP-OUT (TRACES ALLOWED)

DETAIL C
SCALE 3:1

 ALL BEST ELECTRONICS CO., LTD.		TITLE: QSFP+ 1X1 Cage Assembly W/ Light Pipe & Heat Sink	
		DWG#: R-OR-Q1-4CMEH	SHEET: 3/4 REV.: B
UNIT: mm	SCALE: A4 2:1	FINISH:	CHECKED: Gary Kang
 THIRD ANGLE PROJECTION	TOLERANCE: Angle: ± 1° X ± 0.15 .X ± 0.10 .XX ± 0.05	MATERIAL: RoHS Compliant	APPROVED: George Yang
		DRAWN: Boris	DATE: 04/13/2018



CROSS HATCHED AREA DENOTES WHERE SURFACE TRACES ARE PERMITTED

QUAD LIGHT PIPE LED LAYOUT

CROSS HATCHED AREA DENOTES EMI GROUNDING PAD (MUST BE CONNECTED TO CHASSIS GROUND)

HATCHED AREA DENOTES COMPONENT AND TRACE KEEP-OUT (EXCEPT CHASSIS GROUND)

DOUBLE SIDE PCB LAYOUT
MINIMUM PCB THICKNESS OF 2.2 MM
TOLERANCE: ±0.05

DETAIL D
SCALE 2:1

AREA DENOTES COMPONENT KEEP-OUT (TRACES ALLOWED)

DETAIL E
SCALE 3:1



TITLE: QSFP+ 1X1 Cage Assembly W/ Light Pipe & Heat Sink			
DWG#: R-OR-Q1-4CMEH		SHEET: 4/4	REV. B
UNIT: mm	SCALE: A4 2:1	FINISH:	CHECKED: Gary Kang
TOLERANCE: Angle: ± 1° X ± 0.15 .X ± 0.10 .XX ± 0.05		MATERIAL: RoHS Compliant	APPROVED: George Yang
THIRD ANGLE PROJECTION		DRAWN: Boris	DATE: 04/13/2018