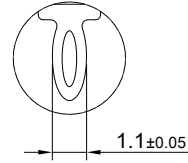
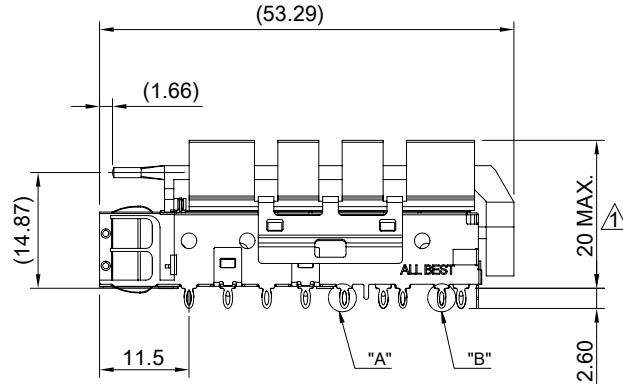
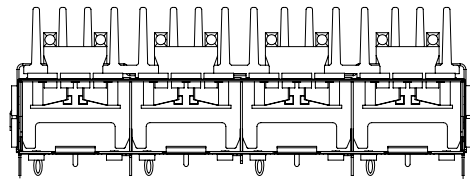
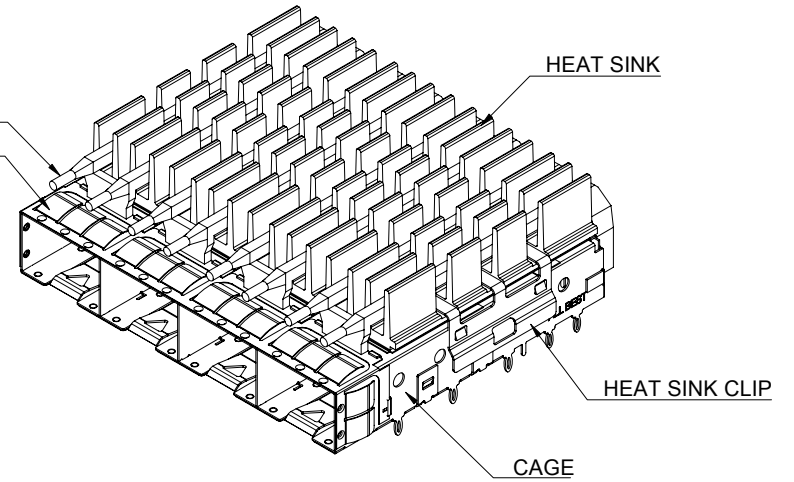


DETAIL A
SCALE 4:1



DETAIL B
SCALE 4:1



MATERIAL
 CAGE: NICKEL SILVER
 HEAT SINK: ALUMINUM
 HEAT SINK CLIP: STAINLESS STEEL
 EMI SPRING: STAINLESS STEEL
 LIGHT PIPE: PC

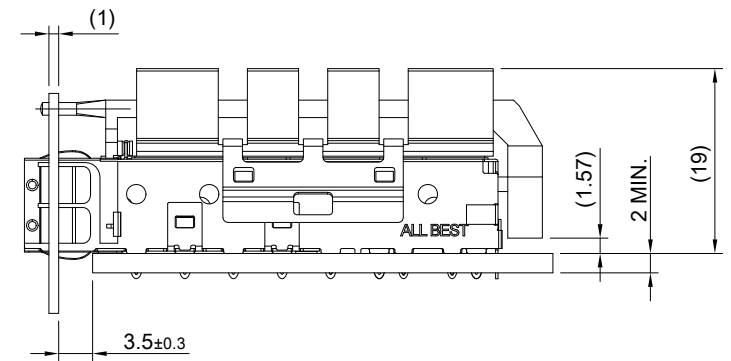
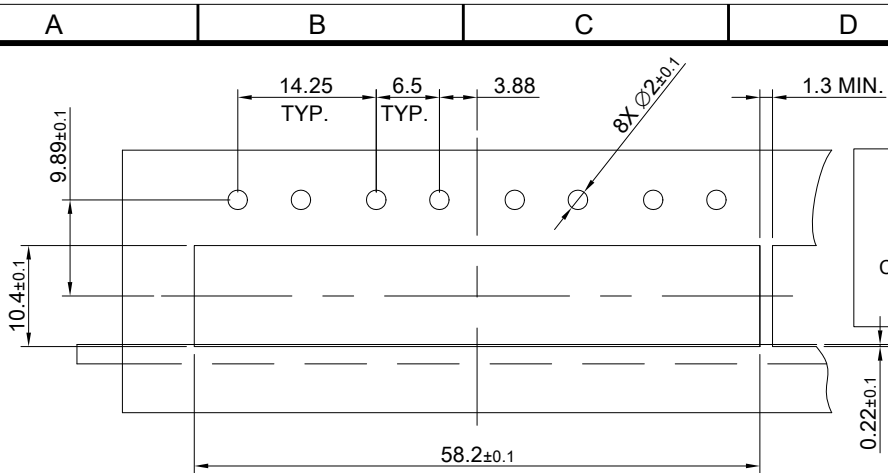
FINISH
 HEAT SINK: ANODE PROCESS

NOTE
 ▲ DIMENSION APPLIES WITH MODULE INSERTED IN CAGE

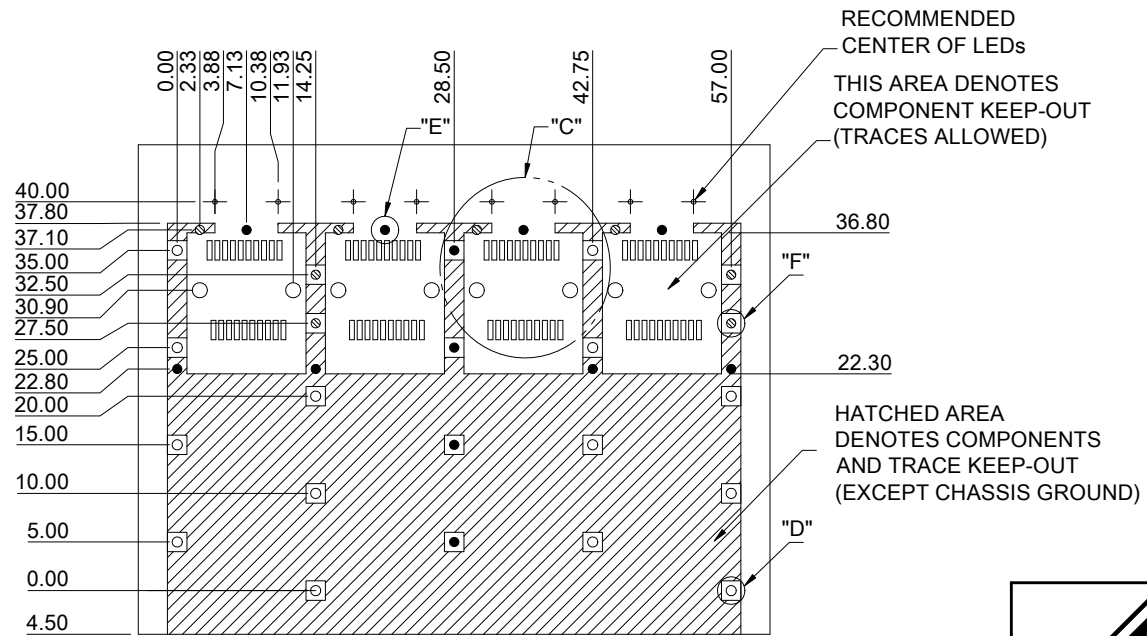
THIS PRINT IS
PRELIMINARY
 UNQUALIFIED PRODUCT
 CONTACT PRODUCT ENGINEERING
 BEFORE USING THIS PRINT



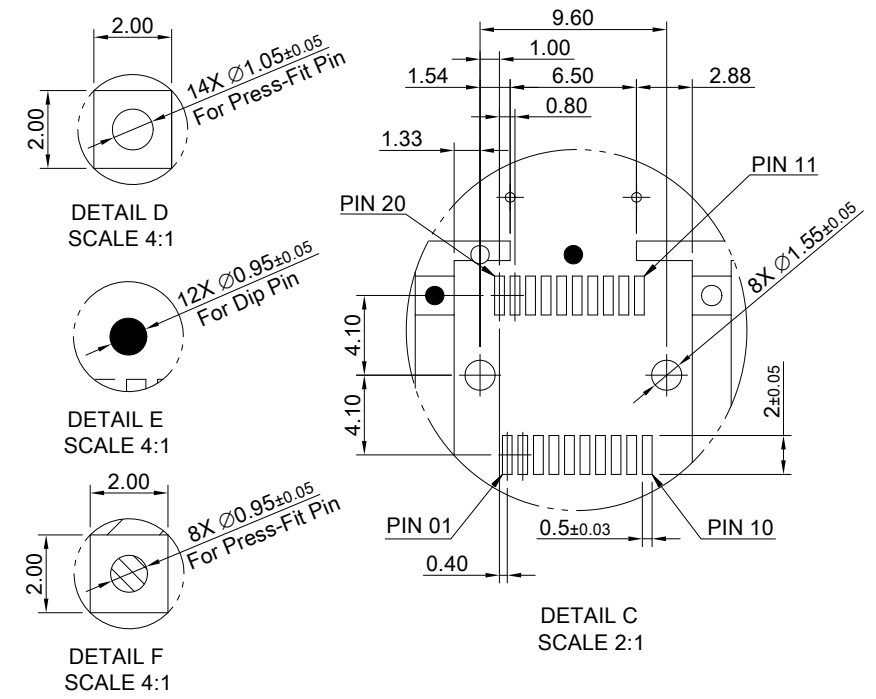
TITLE: SFP56 1X4 Cage Assembly w/ NET Heat Sink & Light Pipe			
DWG#: R-SH-0561X4-7-T-A1		SHEET: 1/3	REV. REF
UNIT: mm	SCALE: A4 1:1	CHECKED:	
TOLERANCE: Angle: ± 1° X.± 0.25 .X± 0.20 .XX± 0.15		MATERIAL: RoHS Compliant	APPROVED:
THIRD ANGLE PROJECTION		DRAWN: Ting	DATE: 03/22/2024



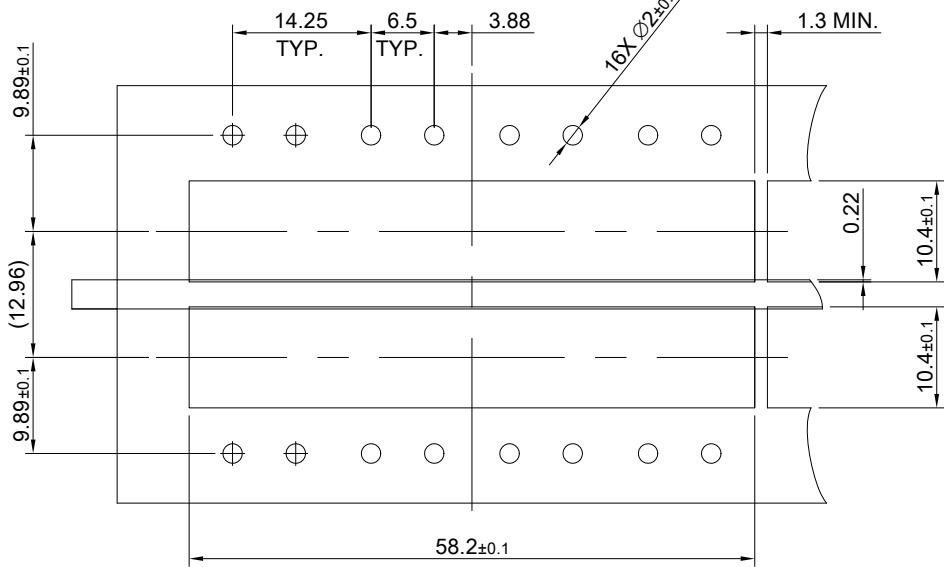
RECOMMENDED BEZEL CUT-OUT
SINGLE-SIDE APPLICATIONS



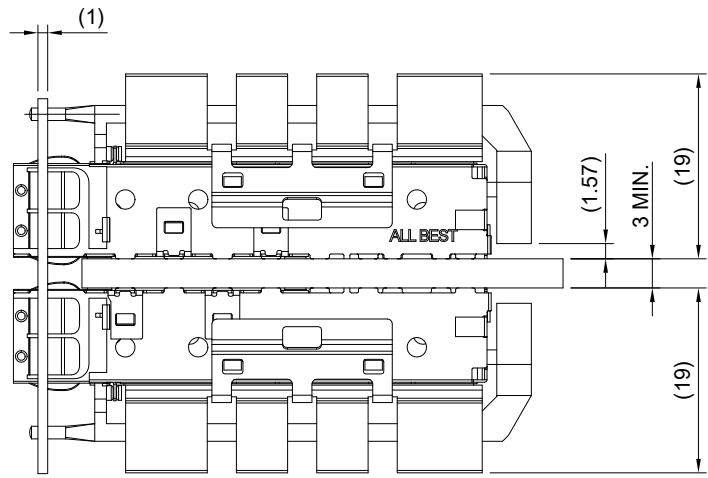
PCB LAYOUT FOR SINGLE-SIDE CONFIGURATION
TOLERANCE: ± 0.05



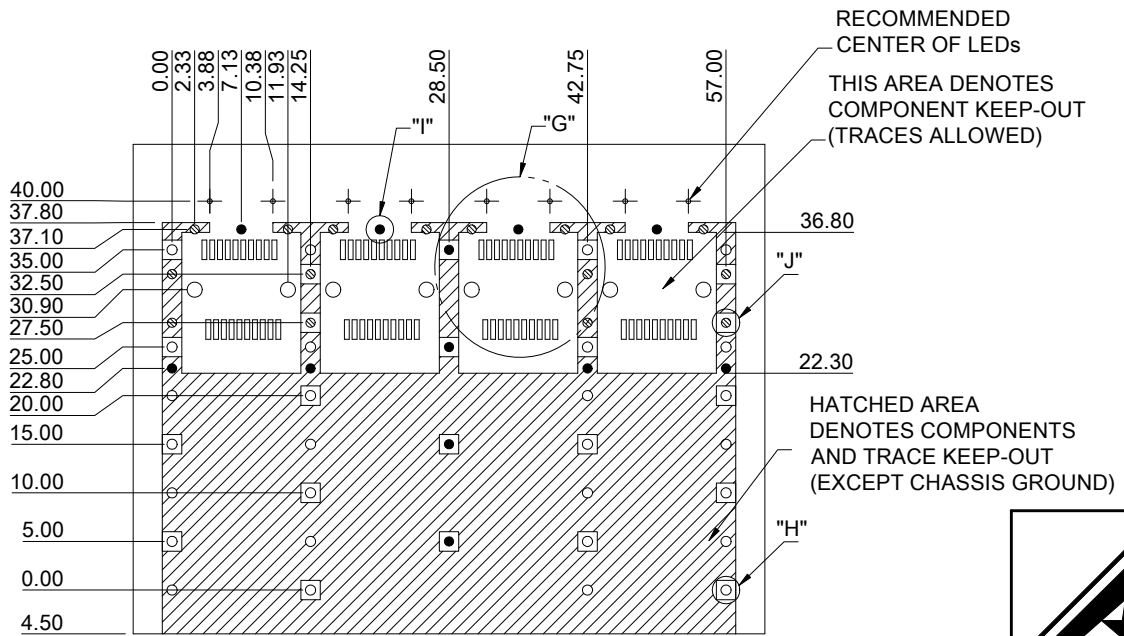
<p>ALL BEST ALL BEST ELECTRONICS CO., LTD.</p>	TITLE: SFP56 1X4 Cage Assembly w/ NET Heat Sink & Light Pipe		SHEET: 2/3 REV. REF	
	DWG#: R-SH-0561X4-7-T-A1		CHECKED:	
UNIT: mm	SCALE: A4 5:4	FINISH:	APPROVED:	
THIRD ANGLE PROJECTION	TOLERANCE: Angle: $\pm 1^\circ$ X: ± 0.15 .X: ± 0.1 .XX: ± 0.05	MATERIAL: RoHS Compliant	DATE: 03/22/2024	
		DRAWN: Ting		



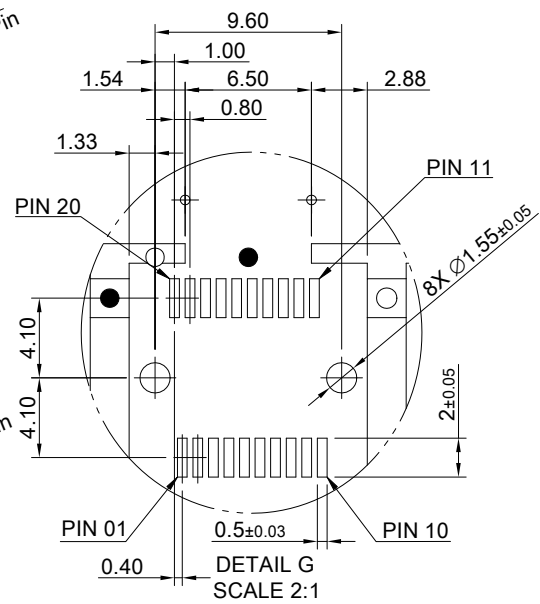
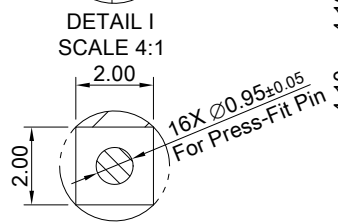
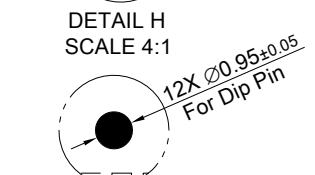
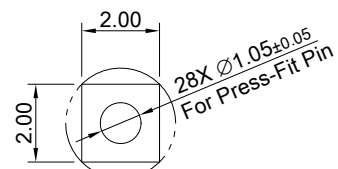
THIS PRINT IS
PRELIMINARY
 UNQUALIFIED PRODUCT
 CONTACT PRODUCT ENGINEERING
 BEFORE USING THIS PRINT



RECOMMENDED BEZEL CUT-OUT
 BELLY TO BELLY APPLICATIONS



RECOMMENDED PCB LAYOUT
 FOR BELLY TO BELLY MOUNTING
 TOLERANCE: ±0.05



TITLE: SFP56 1X4 Cage Assembly w/ NET Heat Sink & Light Pipe		SHEET: 3/3	REV. REF
DWG#: R-SH-0561X4-7-T-A1		CHECKED:	APPROVED:
UNIT: mm	SCALE: A4 5:4	MATERIAL: RoHS Compliant	
THIRD ANGLE PROJECTION		DRAWN: Ting	
TOLERANCE: Angle: ±1° X.± 0.15 .X± 0.1 .XX± 0.05		DATE: 03/22/2024	