

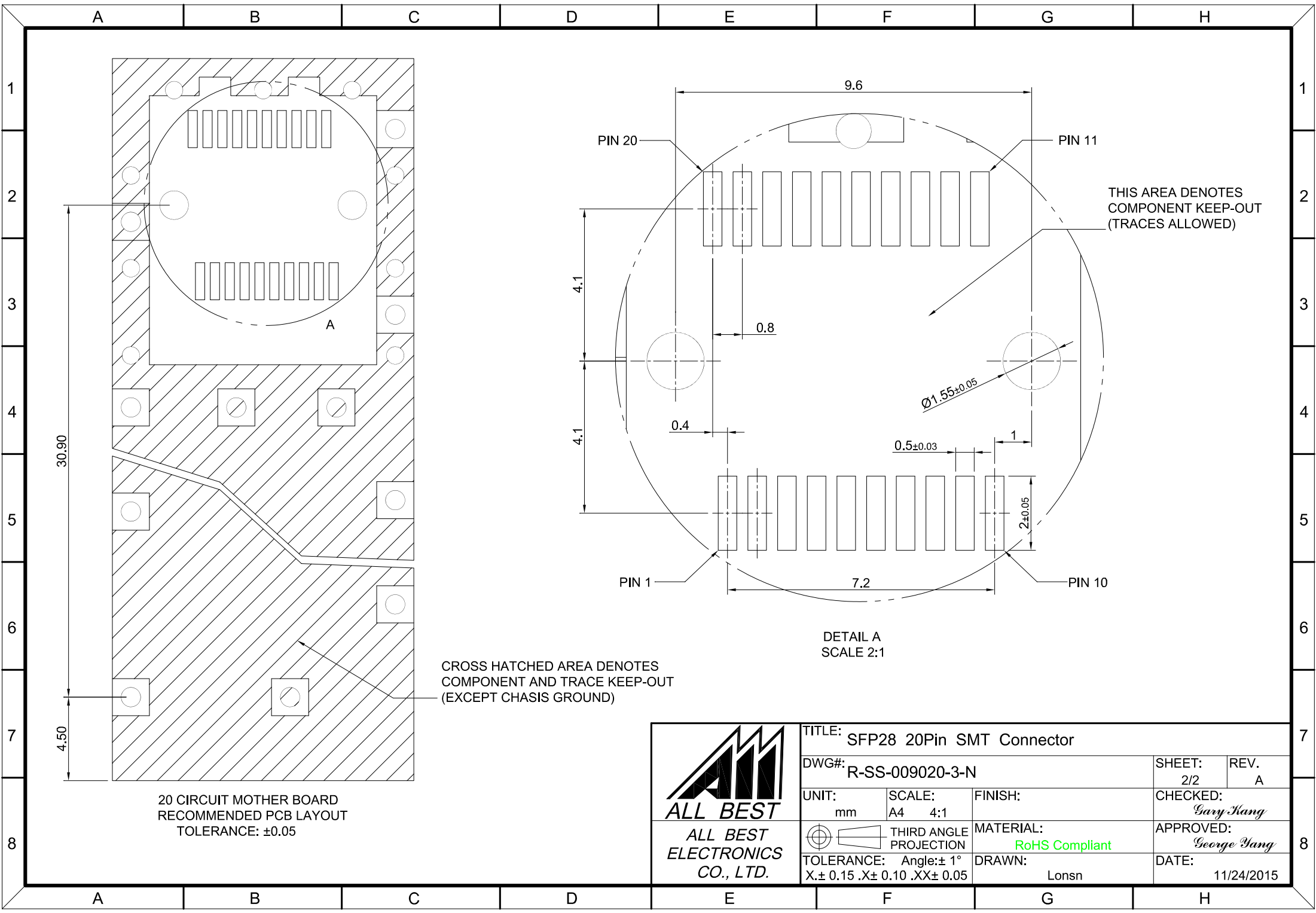
MATERIAL
 CONTACTS: COPPER ALLOY
 INSULATOR: LCP THERMOPLASTIC 94V-0
 INSULATOR COLOR: BLACK

ELECTRICAL CHARACTERISTICS
 CONTACT CURRENT RATING: 0.5 AMPERE
 DIELECTRIC WITHSTANDING VOLTAGE: 300V DC
 VOLTAGE RATING: 30 VDC
 CONTACT RESISTANCE: 35 MILLOHMS MAX

FINISH
 CONTACTS: 15 μ" MIN. GOLD ON MATING END (SIGNAL PIN)
 ALL UNDERPLATED NICKEL
 100 μ" MATTE TIN ON SOLDER FOOT AREA

ENVIRONMENT
 OPERATION TEMPERATURE: -55° C TO 85° C
 SMT TEMPERATURE: 260°C

 ALL BEST ALL BEST ELECTRONICS CO., LTD.	TITLE: SFP28 20Pin SMT Connector		SHEET:	REV.
	DWG#: R-SS-009020-3-N		1/2	A
	UNIT: mm	SCALE: A4 4:1	FINISH:	CHECKED: <i>Gary Kang</i>
	THIRD ANGLE PROJECTION TOLERANCE: Angle: ± 1° X: ± 0.25 .X: ± 0.20 .XX: ± 0.15		MATERIAL: RoHS Compliant	APPROVED: <i>George Yang</i>
			DRAWN: Lonsn	DATE: 11/24/2015

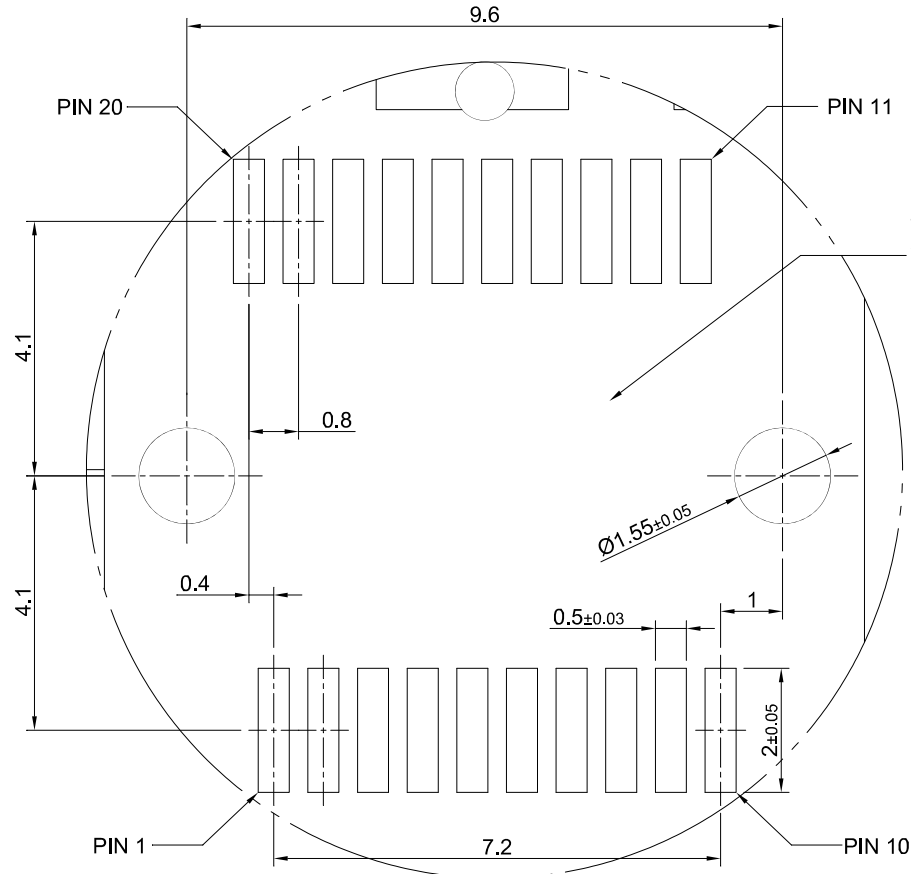


30.90

4.50

20 CIRCUIT MOTHER BOARD
RECOMMENDED PCB LAYOUT
TOLERANCE: ±0.05

CROSS HATCHED AREA DENOTES
COMPONENT AND TRACE KEEP-OUT
(EXCEPT CHASIS GROUND)



THIS AREA DENOTES
COMPONENT KEEP-OUT
(TRACES ALLOWED)

DETAIL A
SCALE 2:1



TITLE: SFP28 20Pin SMT Connector			
DWG#: R-SS-009020-3-N		SHEET: 2/2	REV. A
UNIT: mm	SCALE: A4 4:1	FINISH:	CHECKED: Gary Kang
THIRD ANGLE PROJECTION		MATERIAL: RoHS Compliant	APPROVED: George Yang
TOLERANCE: Angle: ± 1° X: ± 0.15 .X ± 0.10 .XX ± 0.05		DRAWN: Lonsn	DATE: 11/24/2015