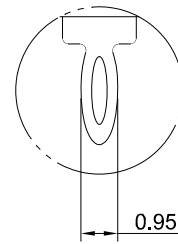
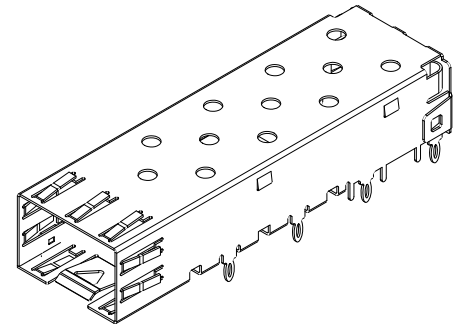


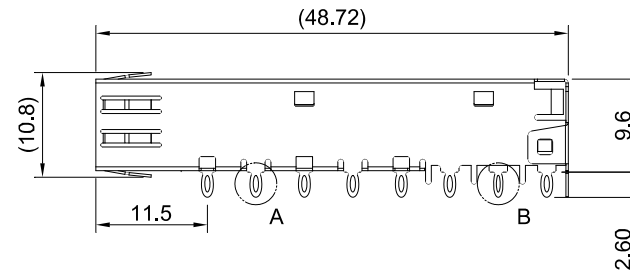
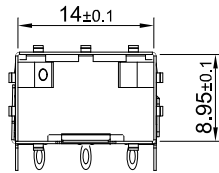
DETAIL A
SCALE 4:1



DETAIL B
SCALE 4:1



MATERIAL
CAGE: NICKEL SILVER



TITLE: SFP Cage One Piece Press Fit

DWG#: R-SH-008020-19

SHEET: 1/2	REV. B
---------------	-----------

UNIT: mm	SCALE: A4 5:4
-------------	------------------

FINISH:

MATERIAL:
RoHS Compliant

CHECKED:
Gary Kang
APPROVED:
George Yang

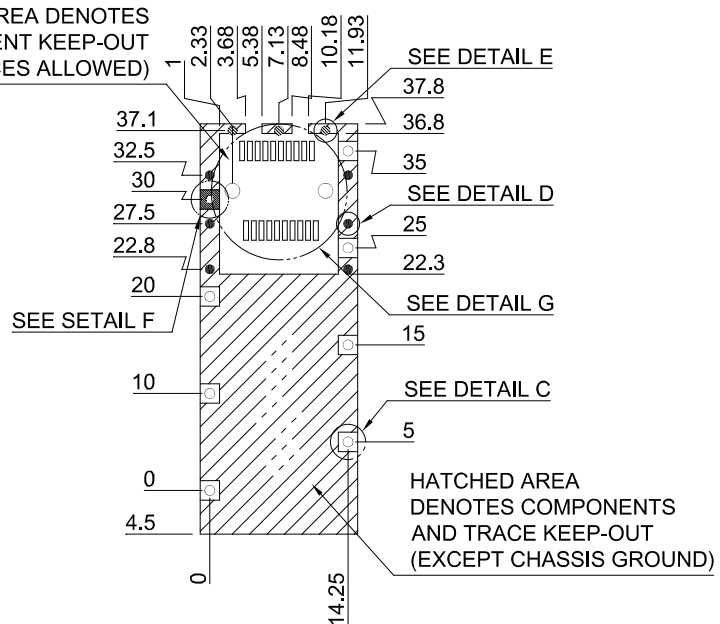
THIRD ANGLE
PROJECTION

TOLERANCE: Angle: ± 1°
X: ± 0.25 .X: ± 0.20 .XX: ± 0.15

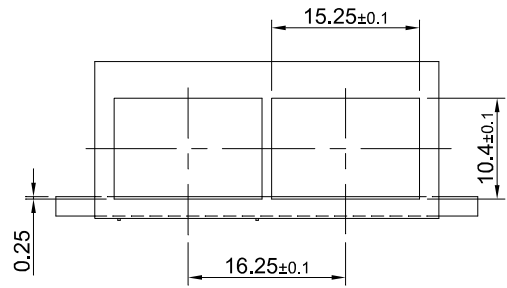
DRAWN:
Boris

DATE:
02/02/2016

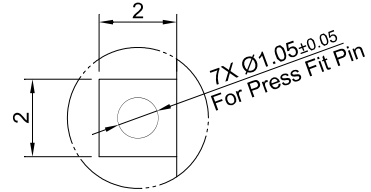
THIS AREA DENOTES
COMPONENT KEEP-OUT
(TRACES ALLOWED)



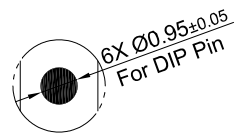
TOLERANCE: ± 0.05
RECOMMENDED PCB LAYOUT



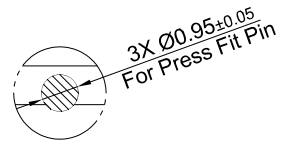
RECOMMENDED BEZEL CUT-OUT



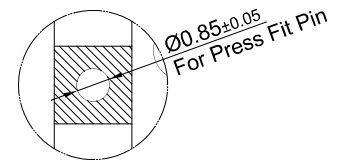
DETAIL C
SCALE 4:1



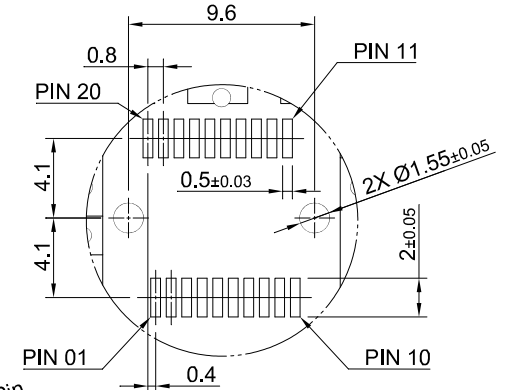
DETAIL D
SCALE 4:1



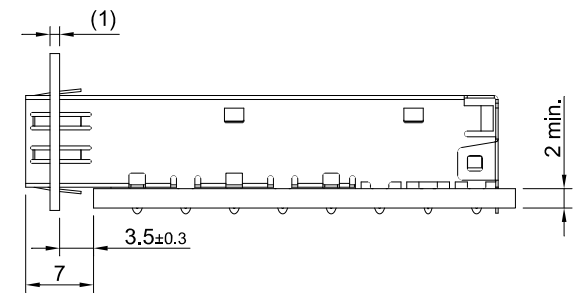
DETAIL E
SCALE 4:1



DETAIL F
SCALE 4:1



DETAIL E
SCALE 2:1



TITLE: SFP Cage One Piece Press Fit			
DWG#: R-SH-008020-19		SHEET: 2/2	REV. B
UNIT: mm	SCALE: A4 5:4	FINISH:	CHECKED: Gary Kang
THIRD ANGLE PROJECTION		MATERIAL: RoHS Compliant	APPROVED: George Yang
TOLERANCE: Angle: $\pm 1^\circ$ X: ± 0.15 .X: ± 0.10 .XX: ± 0.05		DRAWN: Boris	DATE: 02/02/2016