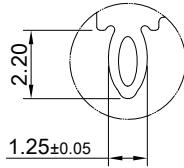
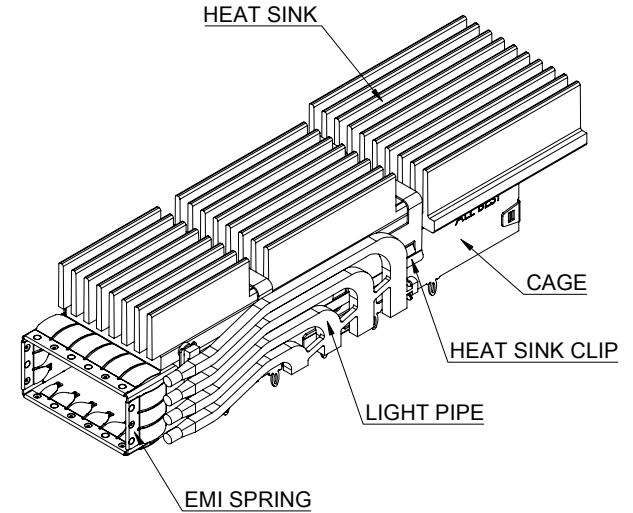


(20.52)



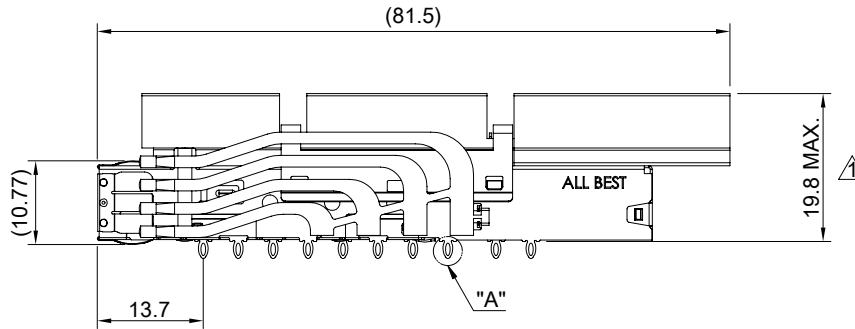
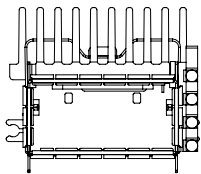
DETAIL A  
SCALE 4:1



MATERIAL  
 CAGE: NICKEL SILVER  
 EMI SPRING: STAINLESS STEEL  
 HEAT SINK: ALUMINUM  
 HEAT SINK CLIP: STAINLESS STEEL  
 LIGHT PIPE: PC

FINISH  
 HEAT SINK: ANODE PROCESS

NOTE  
 ▲ DIMENSION APPLIES WITH MODULE INSERTED IN CAGE



THIS PRINT IS  
**PRELIMINARY**  
 UNQUALIFIED PRODUCT  
 CONTACT PRODUCT ENGINEERING  
 BEFORE USING THIS PRINT



TITLE: QSFP-DD 1X1 Cage Assembly w/ Heat Sink & Light Pipe

DWG#: R-OR-QD1-4CME5-MKR4

SHEET: 1/4  
 REV. REF.

UNIT: mm  
 SCALE: A4 1:1

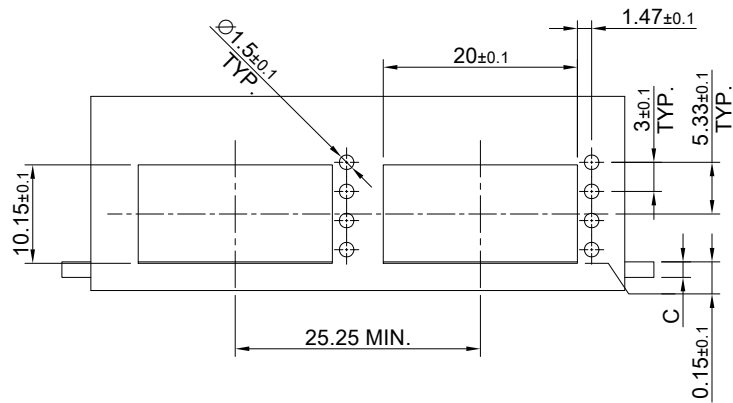
FINISH: CHECKED:

THIRD ANGLE PROJECTION

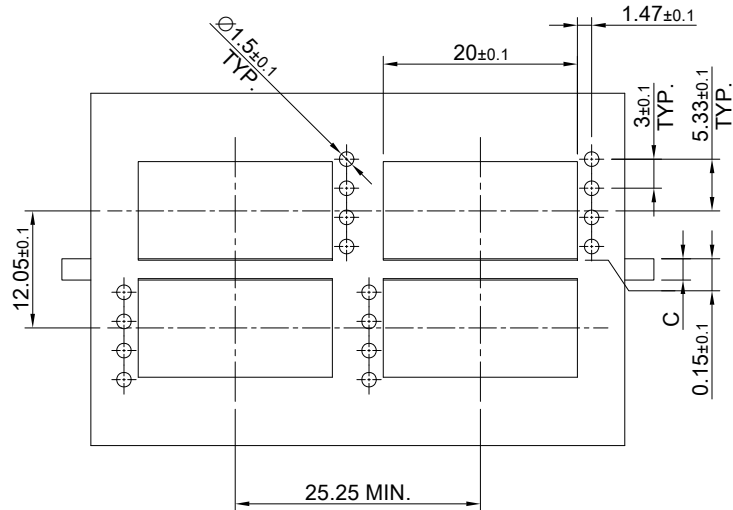
MATERIAL: **RoHS Compliant**  
 APPROVED:

TOLERANCE: Angle: ± 1°  
 X.± 0.25 .X± 0.20 .XX± 0.15

DRAWN: Jason Zhao  
 DATE: 03/22/2024



SINGLE-SIDE CONFIGURATION



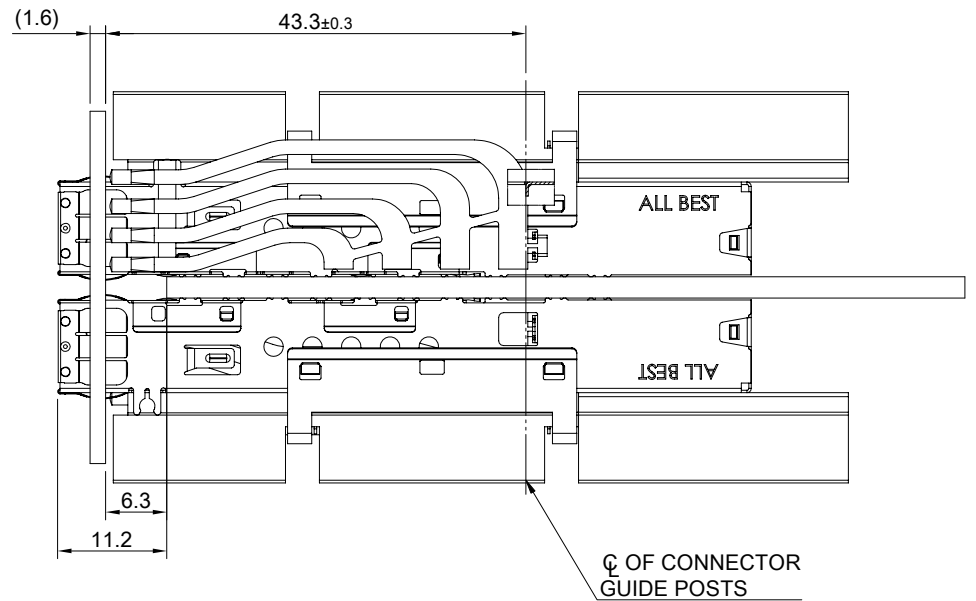
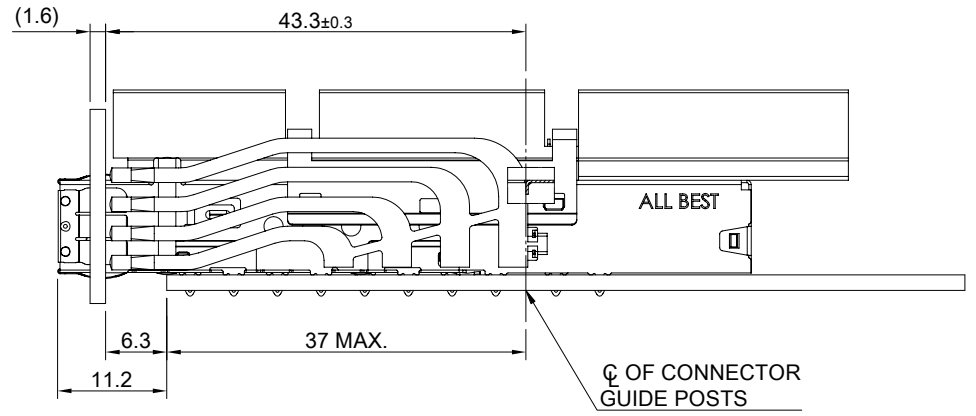
BELLY TO BELLY CONFIGURATION

C = THICKNESS OF PC BOARD  
 SINGLE-SIDE = 1.6MM (MIN.)  
 BELLY TO BELLY = 2.2MM (MIN.)

THIS PRINT IS  
**PRELIMINARY**  
 UNQUALIFIED PRODUCT  
 CONTACT PRODUCT ENGINEERING  
 BEFORE USING THIS PRINT



**ALL BEST**  
 ELECTRONICS  
 CO., LTD.



TITLE: QSFP-DD 1X1 Cage Assembly w/ Heat Sink & Light Pipe

DWG#: R-OR-QD1-4CME5-MKR4

UNIT: mm

SCALE: A4 5:4

FINISH:

SHEET: 2/4  
 REV. REF.

THIRD ANGLE PROJECTION

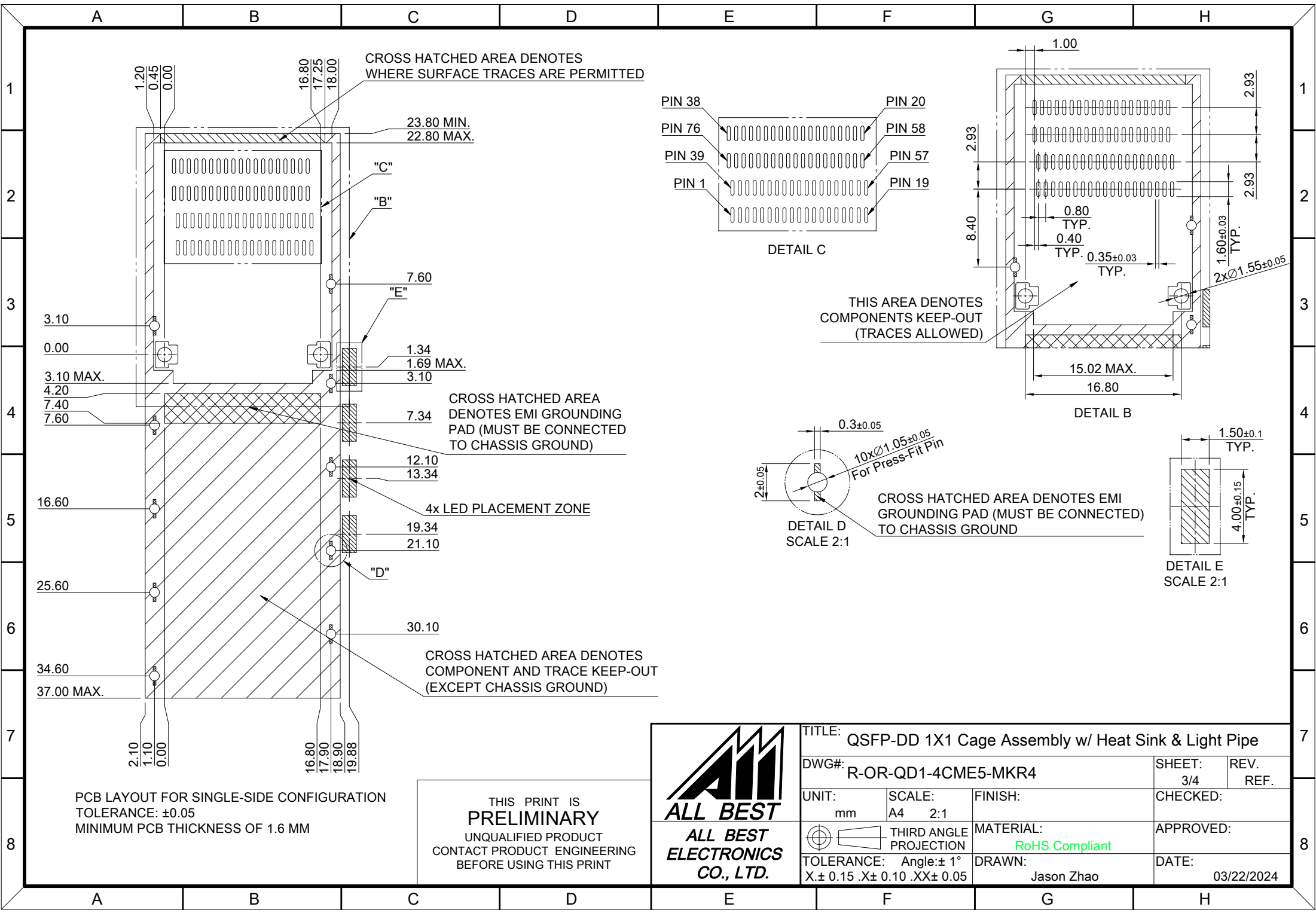
MATERIAL: RoHS Compliant

TOLERANCE: Angle: ± 1°  
 X ± 0.15 .X ± 0.10 .XX ± 0.05

DRAWN: Jason Zhao

APPROVED:

DATE: 03/22/2024



PCB LAYOUT FOR SINGLE-SIDE CONFIGURATION  
 TOLERANCE: ±0.05  
 MINIMUM PCB THICKNESS OF 1.6 MM

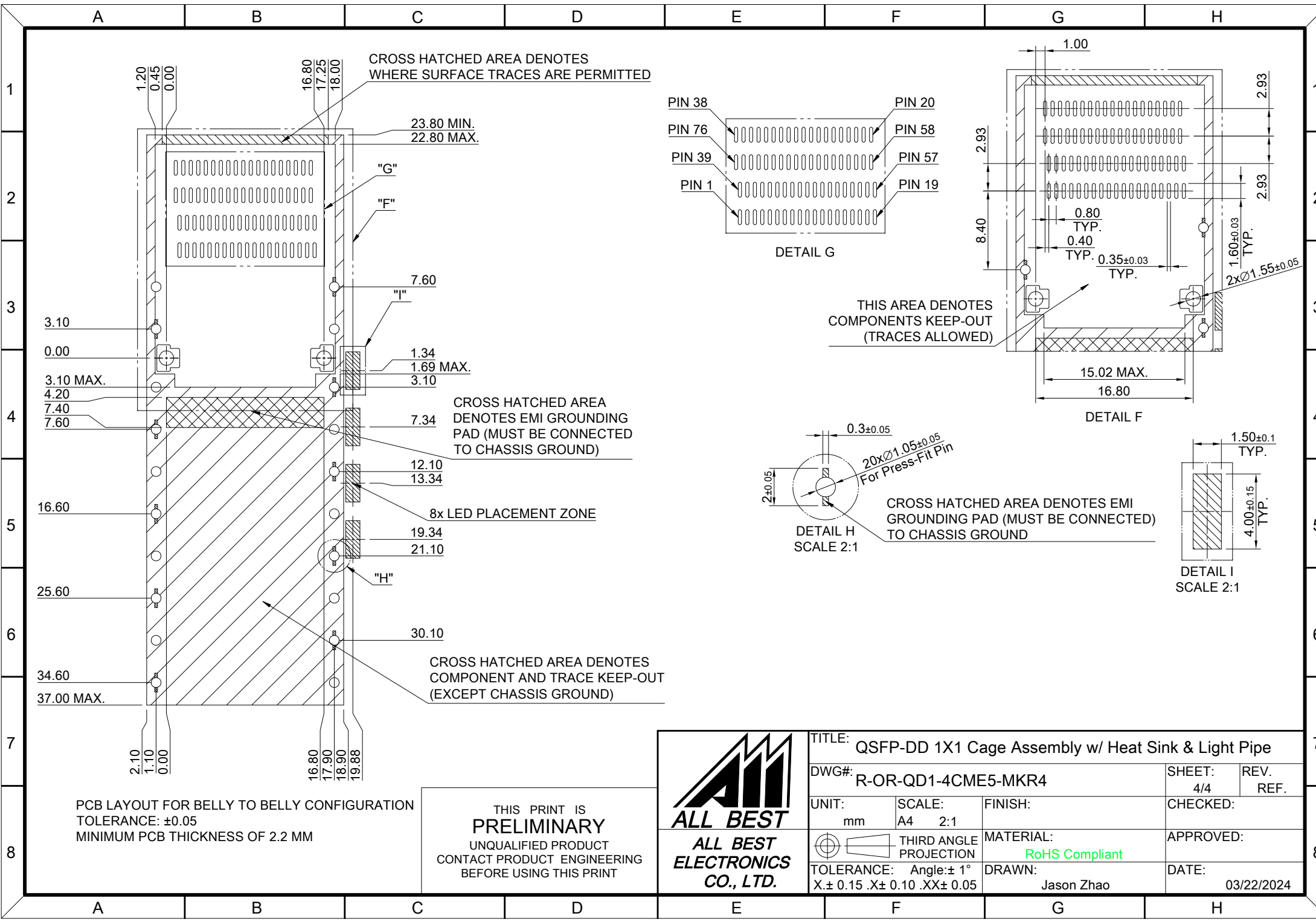
THIS PRINT IS  
**PRELIMINARY**  
 UNQUALIFIED PRODUCT  
 CONTACT PRODUCT ENGINEERING  
 BEFORE USING THIS PRINT



|  |               |                          |                  |
|--|---------------|--------------------------|------------------|
| TITLE: QSFP-DD 1X1 Cage Assembly w/ Heat Sink & Light Pipe |               |                          |                  |
| DWG#: R-OR-QD1-4CME5-MKR4                                  |               | SHEET: 3/4               | REV. REF.        |
| UNIT: mm   | SCALE: A4 2:1 | FINISH:                  |                  |
| THIRD ANGLE PROJECTION                                     |               | MATERIAL: RoHS Compliant |                  |
| TOLERANCE: Angle: ±1°<br>X: ±0.15 .X: ±0.10 .XX: ±0.05     |               | DRAWN: Jason Zhao        | DATE: 03/22/2024 |


CHECKED:

APPROVED:



PCB LAYOUT FOR BELLY TO BELLY CONFIGURATION  
 TOLERANCE: ±0.05  
 MINIMUM PCB THICKNESS OF 2.2 MM

THIS PRINT IS  
**PRELIMINARY**  
 UNQUALIFIED PRODUCT  
 CONTACT PRODUCT ENGINEERING  
 BEFORE USING THIS PRINT

|  |  |               |                   |   |           |           |
|--|--|---------------|-------------------|---|-----------|-----------|
| <br><b>ALL BEST</b><br><b>ELECTRONICS</b><br><b>CO., LTD.</b> | TITLE: QSFP-DD 1X1 Cage Assembly w/ Heat Sink & Light Pipe |               | SHEET: 4/4        |   | REV. REF. |           |
|  | DWG#: R-OR-QD1-4CME5-MKR4                                  |               |                   | CHECKED:  |           | APPROVED: |
|  | UNIT: mm   | SCALE: A4 2:1 | FINISH:           | MATERIAL: <span style="color: green;">RoHS Compliant</span> |           |           |
|  | TOLERANCE: Angle: ±1°<br>X: ±0.15 .X: ±0.10 .XX: ±0.05     |               | DRAWN: Jason Zhao | DATE: 03/22/2024  |           |           |