

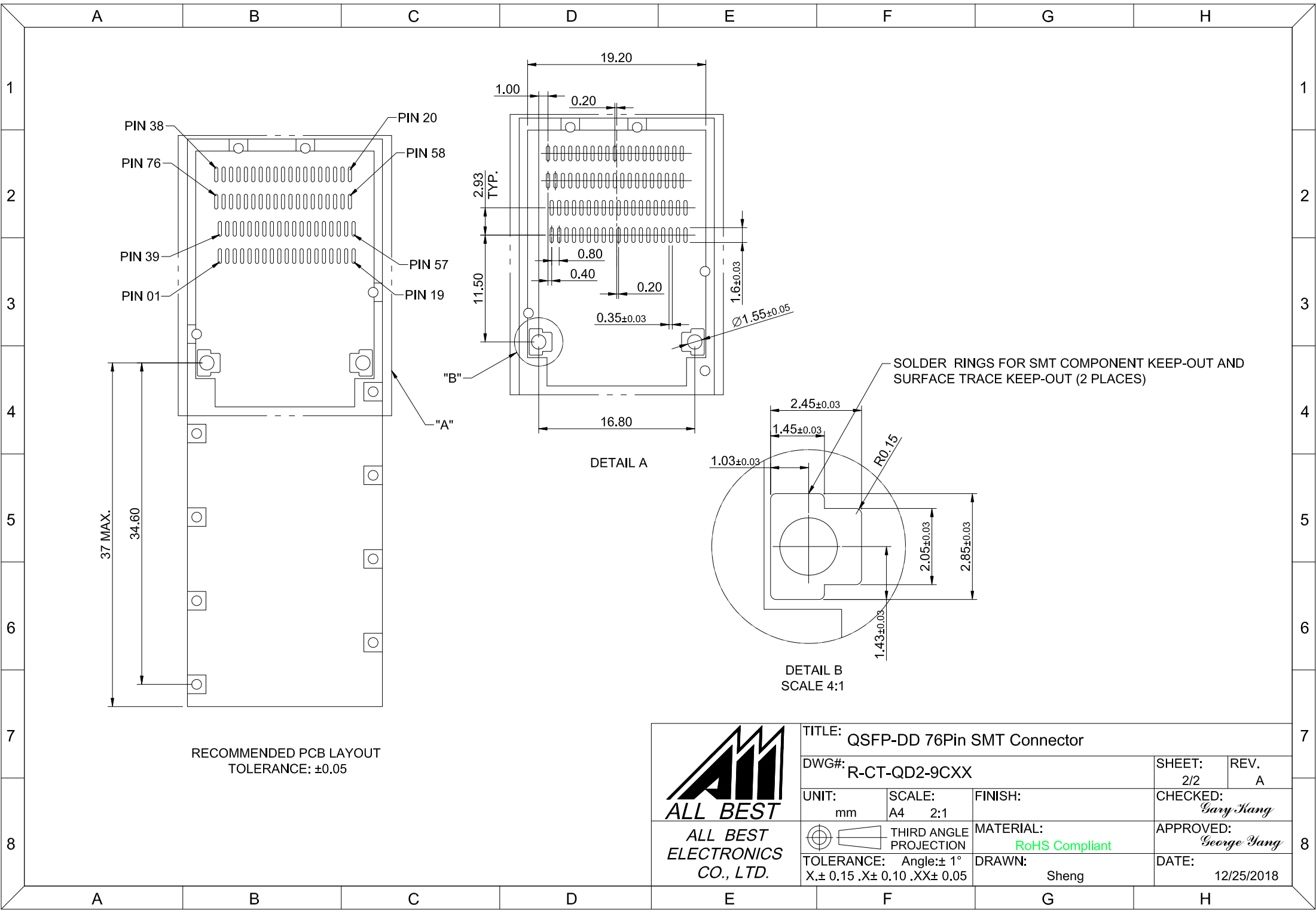
**MATERIALS**  
 CONTACTS: COPPER ALLOY  
 HOUSING: LCP THERMOPLASTIC 94V-0 (BLACK)

**ELECTRICAL CHARACTERISTICS**  
 CONTACT CURRENT RATING: 1.0 AMPERE  
 DIELECTRIC WITHSTANDING VOLTAGE: 300 VDC  
 VOLTAGE RATING: 30 VAC  
 CONTACT RESISTANCE: 10 mΩ MAX.


**FINISHES**  
 CONTACTS: 15μ" MIN. GOLD ON MATING END;  
 100μ" MIN. MATTE TIN ON SOLDER FOOT AREA  
 ALL UNDERPLATED NICKEL

**ENVIRONMENT**  
 OPERATION TEMPERATURE: -55°C TO +85°C  
 SMT TEMPERATURE: 260°C

	TITLE: QSFP-DD 76Pin SMT Connector			SHEET: 1/2		REV. A	
	DWG#: R-CT-QD2-9CXX			CHECKED: Gary Kang			
	UNIT: mm	SCALE: A4 2:1	FINISH:	APPROVED: George Yang			
	TOLERANCE: X.± 0.25 .X± 0.2 .XX± 0.15		THIRD ANGLE PROJECTION	MATERIAL: RoHS Compliant	DATE: 12/25/2018		
			DRAWN: Sheng				



RECOMMENDED PCB LAYOUT  
TOLERANCE: ±0.05

 <b>ALL BEST</b> ALL BEST ELECTRONICS CO., LTD.	TITLE: QSFP-DD 76Pin SMT Connector			SHEET: 2/2		REV. A	
	DWG#: R-CT-QD2-9CXX			CHECKED: Gary Heng			
	UNIT: mm	SCALE: A4 2:1	FINISH:	MATERIAL: RoHS Compliant			
	TOLERANCE: X± 0.15 .X± 0.10 .XX± 0.05		THIRD ANGLE PROJECTION	DRAWN: Sheng	APPROVED: George Heng		
					DATE: 12/25/2018		